

Regeneration of Kenyan Cassava (*Manihot Esculenta Crantz*) Genotypes

Ngugi MP^{1*}, Oduor RO¹, Omwoyo RO², Njagi JM³, Mgtu AJ¹ and Cheruiyot RC²

¹Department of Biochemistry and Biotechnology, Kenyatta University, P.O Box 437844-00100, Nairobi, Kenya

²Department of Plant and Microbial Sciences, Kenyatta University, P.O Box 437844-00100, Nairobi, Kenya

³Department of Environmental Health, Kenyatta University, P.O Box 437844-00100, Nairobi, Kenya

Abstract

A reproducible regeneration system based on direct somatic embryogenesis is described for Kenya cassava lines. Cassava plants were regenerated at high frequency by inducing shoot primordial on explants derived from cotyledons of cassava somatic embryos. Various parameters were evaluated on their effects on callus induction, somatic embryogenesis, maturation and germination of somatic embryos as well as recovery of regenerated plantlets. Immature leaf lobes were used as explants for somatic embryogenesis. Three Kenyan cassava genotypes viz; *Adhiambo Lera*, *Kibanda Meno* and *Serere* along with a model cultivar, *TMS 60444* were used this system. Remarkable regeneration frequencies were observed in all the evaluated genotypes with *Adhiambo Lera* showing the best responses. As a result, a highly efficient plant regeneration protocol via germination of somatic embryos was achieved. This system enriches the scope of *in vitro* regeneration protocols for cassava and is envisaged to be a reliable prerequisite to genetic transformation of African cassava genotypes

Keywords: Somatic embryogenesis; Immature leaf lobes; Kenyan Cassava genotypes; Regeneration

Introduction

Cassava (*Manihot esculenta* Crantz, Euphorbiaceae, 2ⁿ=36) is one of the most important food crops in the world, especially in the tropics [1]. Its starchy tuberous roots provide a valuable source of cheap calories for about 500 million people in the developing world commonly plagued by chronic food deficiency and malnutrition [2]. In addition, the leaves and tender shoots are eaten in many parts of Africa as a source of vitamins, minerals and protein [3]. It is tolerant to low fertility and drought, which makes it popular among small-scale farmers in places with infertile soils and adverse climates [4]. Cassava is also used in the production of ethanol for fuel, for animal feed, and as a raw material for the starch industry.

Despite these pleasant qualities, cassava has its drawbacks. It contains cyanogenic glycosides which when not effectively removed may cause a variety of health problems in nutritionally-compromised peoples [5]. Due to its low protein content (1-2%) and limited amounts of sulphur-containing amino acids, additional food sources are required to ensure a diet balanced in protein, vitamins and minerals [6,7]. During the long cultivation period (up to 18 months) of cassava, repeated attacks by various insect pests and virus diseases can cause 20-50% yield losses worldwide, and locally they can lead to total crop failures [8,9]. Further, cassava suffers from postharvest physiological deterioration during transport, storage and marketing [10]. Although the roots can remain in the ground for many months, once they are harvested they deteriorate rapidly and within 48 hours they are unmarketable. In spite of its high importance to food security in third world countries, cassava has long been neglected in plant breeding programmes [11]. The shortcomings associated with cassava production as well as the undesirable traits are potentially amenable to genetic engineering techniques particularly since genetic improvement through traditional breeding has been problematic due to low seed production and long generation time. A critical requirement for the generation of transgenic cassava is an efficient and reproducible plant regeneration system that is compatible with the available transformation methods. Somatic embryos have been induced from cassava young leaf lobes and cotyledons leading to plant regeneration [12-17]. The reported cassava regeneration protocols have seldom optimally worked for Kenyan cassava varieties. Apart from a few studies by [17,18], little if any efforts have focused on developing

regeneration and transformation systems for African cassava varieties [2]. Further, it is reported that African cassava varieties from Africa respond differently in culture from varieties from other parts of the world. Environmental, biological, and human demands for African varieties may be responsible for genetic divergence of African cassava from their South American progenitors potentially accounting for the different responses in culture (Sayre, personal communication). In this regard, it is imperative to develop and optimize a regeneration protocol that can feasibly work for Kenyan and perhaps African cassava varieties, as a pre-requisite for successful genetic transformation of Kenyan cassava varieties. In this paper, we report successful development of an improved regeneration protocol for Kenyan cassava varieties via somatic embryogenesis.

Materials and Methods

Plant materials

Four cassava varieties viz; *Adhiambo Lera*, *Kibanga Meno*, *Serere* and *TMS60444* were sourced from Kenya Agricultural Research Institute (KARI), Kakamega. The plantlets were grown *in vitro* on Murashige and Skoog media [19] supplemented with 20 g/L sucrose, MS Vitamins (Duchefa, Germany) and 8 g/L of noble agar. All media used for *in vitro* propagation of cassava was sterilized through autoclaving. The growth chamber conditions were set at a temperature of 28°C and a 16 hr day/8 night cycle.

Callus induction and somatic embryogenesis

Meristematic leaf lobes (2-6 mm long) from *in vitro*-grown plants

*Corresponding author: Mathew Piero Ngugi, Department of Biochemistry and Biotechnology, Kenyatta University, Nairobi, P.O Box: 437844-00100, Kenya, Tel: +254 710 349; Fax: 485/+254 732 264 557; E-mail: matpiero@gmail.com, piero.mathew@ku.ac.ke

Received April 08, 2015; Accepted May 18, 2015; Published May 27, 2015

Citation: Ngugi MP, Oduor RO, Omwoyo RO, Njagi JM, Mgtu AJ et al. (2015) Regeneration of Kenyan Cassava (*Manihot Esculenta Crantz*) Genotypes. J Plant Biochem Physiol 3: 147. doi:10.4172/2329-9029.1000147

Copyright: © 2015 Ngugi MP, et al. This is an open-access article distributed under the terms of the Creative Commons Attribution License, which permits unrestricted use, distribution, and reproduction in any medium, provided the original author and source are credited.

were cultured on MS basal medium supplemented with 2% (w/v) sucrose, B5 vitamins, 50 mg/L casein hydrolysate, 0.5 mg/L CuSO₄ [20] and 4–16 mg/L 2,4-dichlorophenoxyacetic acid (2,4-D). The same set of meristematic leaf lobes was put in the same media substituted with Picloram. The media pH was adjusted to 5.7 and it was solidified with 0.8% (w/v) noble plant agar. Factors affecting embryogenesis were studied with 0–8% sucrose, 0–1.0 mg/L additional CuSO₄ and keeping the embryogenesis cultures in darkness or on a 12 hr day/12 hr night cycle. The cultures were maintained at a temperature of 28°C. The explants were left in the induction medium for 4–6 weeks. The type of calli was observed at each step and the frequency of embryogenic calli formation was recorded four weeks of culture on callus induction medium (CIM).

Maturation of somatic embryos

This entailed the development of globular stage embryos into green cotyledonary embryos with defined shoot and root axes [14]. The globular stage somatic embryos were subcultured on maturation media composed of MS salts [19] supplemented with 2% (w/v) sucrose, 1 mg/L thiamine-HCl, 100 mg/L myo-inositol, 0.01 mg/L 2,4-D, 1.0 mg/L BA, and 0.5 mg/L GA₃; MS medium supplemented with 2% (w/v) sucrose, 0.01 mg/L NAA, 0.1 mg/L BA and 0.1 mg/L GA₃; or MS basal medium supplemented with 2% (w/v) sucrose. The media pH was solidified with 0.8% (w/v) Difco-Bacto agar. The embryos were maintained in the maturation medium in the dark for 4 weeks.

Germination and plant recovery

Mature somatic embryos were transferred to basal MS medium supplemented with 2% (w/v) sucrose; MS medium supplemented with 2% (w/v) sucrose, 1 mg/L thiamine-HCl, 100 mg/L myo-inositol, 0.01 mg/L 2,4-D, 1.0 mg/L BA and 0.5 mg/L GA₃; MS basal salt supplemented with 2% (w/v) sucrose and 0.8% (w/v) activated charcoal. All the media were solidified with 0.8% (w/v) noble agar for germination and plant recovery. Germination and conversion rates were recorded after four weeks in culture. The cultures were exposed to a daily photoperiod of 12 hours. All cultures were kept at 28°C. Some regenerated plantlets were maintained in growth room ready for transformation experiments while others were hardened in the glass house.

Data analysis

All data were expressed as mean ± SEM (n=3). The collected was subjected to one-way ANOVA. Statistically significant means were analysed by Tukey's Pairwise comparisons at 95% level of significance.

Results

Effects of 2,4-D and Picloram on callus induction and somatic embryogenesis

It was possible to induce calli in all the cassava varieties at all the concentrations of 2,4-D and picloram. Four concentrations of 2, 4-D and picloram (4, 8, 12 and 16 mg/L) were tested for their ability to induce calli and somatic embryogenesis. The different auxin treatments were used to determine which concentration was best for calli and somatic embryo induction of the cassava cultivars. All the treatments produced calli and somatic embryos. For both callus induction and somatic embryogenesis, the best auxin concentration was 8 mg/L of both 2,4-D and picloram, although 2,4-D had better response than picloram (Tables 1 and 2). 12 mg/L of both 2,4-D and picloram also induced calli and embryogenesis appreciably compared to 4mg/L and 16mg/L, which induced the least responses. *Adhiambo Lera* and *Serere* were the best responding varieties with regards to callus induction and somatic embryogenesis (Tables 1 and 2). There was no significant difference in the frequency of callus induction and somatic embryogenesis at auxin concentrations of 4mg/L and 16mg/L (P>0.05). Formation of embryogenic calli was consistent with the frequency of callus induction in all the cassava varieties. Embryogenesis began as swollen regions at the cut ends and mid-veins on the adaxial surface of the immature leaf lobes. The swollen segments then gave rise to two kinds of calli viz; a loose non-embryogenic friable white callus and a translucent gelatinous embryogenic callus that formed globular stage embryos (Figure 1).

Effect of light on somatic embryogenesis

The effect of light on somatic embryogenesis was done by exposing the somatic embryo cultures to 16 hours/day photoperiod versus 8 hours/day dark incubation. This was observed to affect the process of somatic embryogenesis. Following four weeks in culture,

	Average number of calli per explant							
	4		8		12		16	
	2,4-D	Picloram	2,4-D	Picloram	2,4-D	Picloram	2,4-D	Picloram
<i>TMS 6044</i>	64.3 ± 0.9 ^b	60.3 ± 0.9 ^b	85.0 ± 0.6 ^a	81.0 ± 0.6 ^c	74.3 ± 0.9 ^b	70.0 ± 0.6 ^b	68.2 ± 2.4 ^{bc}	58.0 ± 1.2 ^b
<i>Adhiambo Lera</i>	75.0 ± 1.5 ^a	71.7 ± 1.2 ^a	93.0 ± 1.8 ^c	90.0 ± 1.2 ^a	82.7 ± 0.9 ^a	78.7 ± 1.3 ^a	68.3 ± 0.9 ^a	65.0 ± 2.3 ^a
<i>Kibanda Meno</i>	58.3 ± 1.2 ^c	55.3 ± 0.9 ^c	74.7 ± 2.4 ^b	71.0 ± 0.6 ^b	67.7 ± 1.5 ^b	63.0 ± 1.5 ^b	57.0 ± 1.7 ^c	54.3 ± 2.3 ^b
<i>Serere</i>	66.3 ± 0.9 ^b	61.3 ± 0.9 ^b	78.7 ± 0.9 ^b	75.3 ± 1.8 ^b	68.7 ± 1.9 ^{bc}	65.7 ± 2.9 ^b	1.3 ± 0.9 ^b	57.1 ± 2.1 ^b

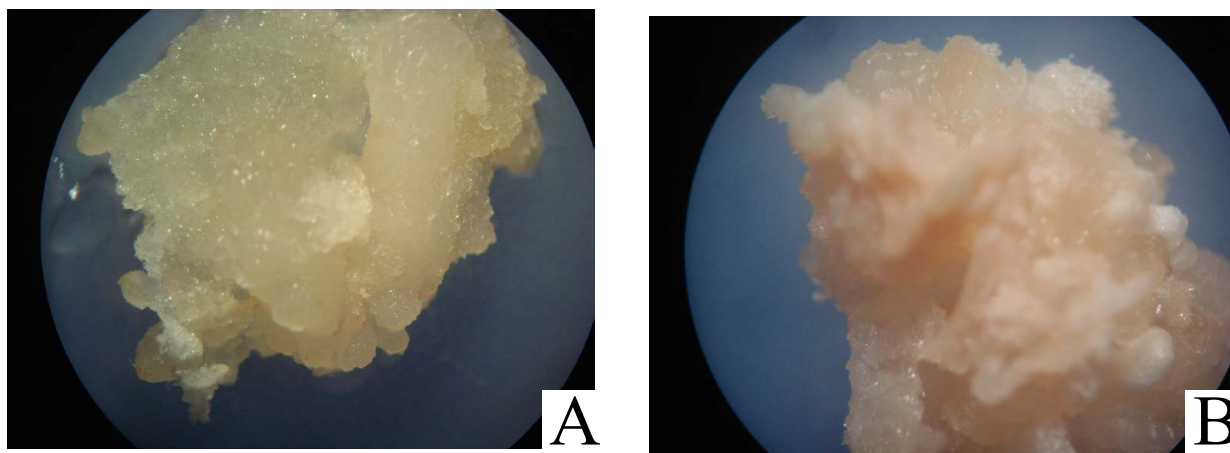
Values followed by different letters are statistically significant by ANOVA followed by Tukey's pairwise comparisons (P>0.05).

Table 1: Effects of the different concentrations 2,4-D and Picloram (mg/L) on callus induction.

	Average number of embryonic calli per explant							
	4		8		12		16	
	2,4-D	Picloram	2,4-D	Picloram	2,4-D	Picloram	2,4-D	Picloram
<i>TMS 6044</i>	20.7 ± 1.2 ^a	20.5 ± 3.4 ^a	33.3 ± 2.0 ^b	29.7 ± 3.0 ^a	26.7 ± 0.9 ^a	27.7 ± 1.5 ^b	21.0 ± 0.6 ^a	19.3 ± 1.8 ^b
<i>Adhiambo Lera</i>	27.0 ± 2.7 ^a	26.3 ± 2.3 ^b	40.7 ± 0.9 ^a	39.4 ± 3.2 ^b	37.3 ± 1.2 ^b	33.8 ± 1.9 ^a	26.7 ± 0.9 ^b	27.7 ± 1.5 ^a
<i>Kibanda Meno</i>	22.0 ± 2.3 ^a	23.7 ± 3.6 ^a	34.7 ± 0.9 ^{ab}	33.6 ± 2.6 ^c	33.0 ± 0.6 ^c	29.8 ± 2.5 ^{ab}	22.7 ± 0.3 ^a	18.7 ± 1.9 ^b
<i>Serere</i>	27.0 ± 0.6 ^a	22.2 ± 2.4 ^a	37.7 ± 1.5 ^{ab}	42.4 ± 3.1 ^b	33.3 ± 1.7 ^b	30.5 ± 2.3 ^{ab}	31.3 ± 0.9 ^c	19.8 ± 1.6 ^b

Values followed by different letters are statistically significant by ANOVA followed by Tukey's pairwise comparisons (P>0.05).

Table 2: Effects of the different concentrations 2,4-D and Picloram (mg/L) on somatic embryogenesis.



A: A loose non-embryogenic friable white callus B: Translucent gelatinous embryogenic callus.

Figure 1: Tissue culture profile somatic embryogenesis of cassava lines.

the light-exposed explants formed more non-embryogenic calli than those kept in the dark (Table 3). Generally, a few embryos were produced when the explants were given 12 hours of light followed by 12 hours of darkness. With dark incubation, *Adhiambo Lera* and *Serere* showed the best responses with 36.6% and 33.8% of light-exposed explants developing somatic embryos respectively compared to 87.7% and 80.1% of dark incubated explants respectively. The two cassava varieties had the highest mean numbers of embryogenic calli per explants compared to *TMS 60444* and *Kibanda Meno* (Table 3). *TMS 60444* and *Kibanda Meno* had 32.5% and 31.5% of light-exposed explants producing somatic embryos respectively compared to 75.4% and 74.1% of dark incubated explants respectively. Nevertheless, light is required for germination of embryos [21]. *Adhiambo Lera* had the best response with regards to callus induction of explants exposed to darkness compared to other genotypes ($P < 0.05$) (Table 3). However, there was no significant difference in the number of embryonic calli produced per explants between *Adhiambo Lera* and *Serere* genotypes.

Effects of copper sulphate

The effect of additional Copper in the form of CuSO_4 was studied with all the cultivars by the inclusion of 0.25, 0.5, 0.75 and 1.0 mg/L of additional CuSO_4 in the induction medium. The results were cultivar-dependent and consistent (Table 4). For cultures devoid of additional copper and those with 0.25 mg/L, formation of embryogenic calli was comparable in all varieties ($P > 0.05$). For all varieties except *TMS 60444*, formation of embryogenic calli with inclusion of 0.5, 0.75 and 1 mg/L of additional Copper was also comparable. However, 0.5 mg/L CuSO_4 had the best response with regards to the number of embryonic calli per explants (Table 4).

Effect of sucrose on embryogenesis

Callus formation and embryogenesis hardly took place with the exclusion of sucrose from the callus induction medium (Table 5). The explants died after four weeks in culture. The number of embryos produced in 2-6 % sucrose media was cultivar dependent. 2% sucrose concentration promoted formation of healthier embryos than the others. Explants grown on 6% sucrose were all cream-colored and most turned brown after 4 weeks in culture. This is a sign of cell death caused by formation of phenolic compounds in the cultures [2]. *Adhiambo Lera* and *Serere* genotypes produced the highest number of embryonic

calli with all the sucrose concentrations (Table 5). However, the response of *Adhiambo Lera* significantly different from the response of *Serere* at 4% and 6% sucrose concentrations ($P < 0.05$). *Kibanda Meno* and the model cultivar *TMS 60444* had comparable responses at 2% and 4% sucrose concentrations (Table 5).

Maturation of somatic embryos

The early stage somatic embryos were transferred to the maturation medium after 4 weeks of culture with adjoining callus. All the embryos grew to cotyledonary embryos with distinct root and shoot axes in all media compositions albeit with differences in frequencies. Three different maturation media differing in cytokinins content were used in this experiment. Embryos maintained on MS medium supplemented with 2% sucrose, 1 mg/L thiamine-HCl, 100 mg/L myo-inositol, 0.01 mg/L 2,4-D, 1.0 mg/L BA and 0.5 mg/L GA_3 was superior to MS medium supplemented with 2% sucrose, 0.01 mg/L NAA, 0.1 mg/L BA and 0.1 mg/L GA_3 and MS medium supplemented with 2% sucrose. As Figure 2 shows, more than 50% percent of embryonic calli produced cotyledonary embryos in the medium containing MS salts supplemented with 2% (w/v) sucrose, 1 mg/L thiamine-HCl, 100 mg/L myo-inositol, 0.01 mg/L 2,4-D, 1.0 mg/L BAP and 0.5 mg/L GA_3 . In the medium supplemented with 0.01 mg/L NAA, 0.1 mg/L BA and 0.1 mg/L GA_3 , more than 70% of embryonic calli hardly produced cotyledonary embryos. The medium supplemented with 2% sucrose promoted the least frequency of maturation (Figure 2). Overall the cultivar *Adhiambo Lera* had the highest frequency of maturation of somatic embryos followed by *Serere* and *TMS 60444*. *Kibanda Meno* had the least response in all the media compositions. As figure 3 shows, the embryos first of all turned green and then progressively formed distinct shoot and root apices. However, there was no significant difference in the frequency of maturation of somatic embryos of *Adhiambo Lera* and *Serere* in the media containing MS salts supplemented with 2% (w/v) sucrose, 1 mg/L thiamine-HCl, 100 mg/L myo-inositol, 0.01 mg/L 2,4-D, 1.0 mg/L BAP and 0.5 mg/L GA_3 ($P > 0.05$) (Table 6). In the same media, the responses of *TMS 60444* and *Serere* genotypes were comparable.

Germination of somatic embryos and plant recovery

The germination medium comprising MS salts, B5 vitamins, 2% sucrose, and 0.8% activated charcoal was superior to basal MS medium

plus 2% sucrose, and MS supplemented with 2% sucrose, 1 mg/L thiamine-HCl, 100 mg/L myo-inositol, 0.01 mg/L 2,4-D, 1.0 mg/L BA and 0.5 mg/L GA₃ in terms of germination time and frequency (Table 7). Single cotyledonary embryos did not always produce single plantlets. In some cases up to five plantlets arose from one embryo. The recovery of plantlets from embryos was genotype-dependent and it was consistent. Overall, *Adhiambo Lera* was the best genotype in terms of both germination time and frequency. As table 7 shows, there was significant difference between *Adhiambo Lera* and other genotypes in all media compositions in terms of germination frequency ($P < 0.05$). On the other hand, the other genotypes; *TMS 60444*, *Kibanda Meno* and *Serere* had comparable germination frequencies in the basal MS medium supplemented with B5 vitamins and 2% (w/v) sucrose and in MS medium supplemented with 2% (w/v) sucrose, 1 mg/L thiamine-HCl, 100 mg/L myo-inositol, 0.01 mg/L 2,4-D, 1.0 mg/L BAP and 0.5 mg/L GA₃ ($P > 0.05$). Upon germination, the recovered plants were grown in the growth room for two weeks following which they were hardened in the glass house. Growth of the regenerated plantlets is summarized in Figure 4.

Discussion

In this study, a protocol for somatic embryogenesis and plant recovery for Kenyan cassava varieties has been optimized. Studies on African cassava varieties by [2] established that 12 mg/L 2, 4-D was better than 12 mg/L picloram for embryogenesis induction for most of the cultivars. Conversely, in this study, it was established that 8mg/L 2,4-D and Picloram produced the best responses in terms of callus induction and somatic embryogenesis in all cultivars. Moreover, 2,4-D (8 mg/L) was better with regards to frequency of leaf lobe embryogenesis than Picloram (8 mg/L) in all cultivars (Table 1 and 2). Nevertheless, embryogenesis was induced at all auxin concentrations in all cultivars. Successful somatic embryogenesis in *Glycine max* on medium supplemented with 40 mg/L 2, 4-D has been accomplished in the past [22]. This is in spite of the studies by [17], who reported an inhibition of embryogenesis in cassava by the supplementation of the induction-medium with more than 12 mg/L 2, 4-D. The observed disparities in the results of this study can be blamed on use of different explants. This study used young leaf lobes, while Konan's group used the cotyledons of zygotic embryos.

Many plant species regenerated *in vitro* through callus are bedeviled by somaclonal variation [2]. This is postulated to be due to the high rate of cell division during callus formation induced by high auxin levels in the induction medium. This drawback is reduced in plants recovered through somatic embryogenesis [17]. Observed that the incidence of somaclonal variation in cassava regenerated by somatic embryogenesis with 4-16 mg/L 2,4-D is negligible. As a convention, embryogenesis in most plants starts with callus induction, followed by transfer to another medium for embryo emergence. In cassava, the explant on the induction medium proliferates to globular stage embryos in about two weeks of culture, hence reducing the length of time the regenerative tissues stay on high auxin (8-12 mg/L) medium [15]. Perhaps this ameliorates the incidence of somaclonal variation further in cassava plants recovered from somatic embryos. Recently, there have been more reports of somaclonal variation in cassava regeneration systems [16,21]. The drive to improve on the efficiency of cassava transformation has led to the development of additional techniques for plant regeneration. A classical example of such efforts is the use of friable embryogenic callus to regenerate somatic embryos. This technique requires the callus to be on the high auxin medium (50 mg/L) for six or more months resulting in high rates of somaclonal variation [21,23]. Copper is thought to enhance growth of embryos during somatic embryogenesis. Somatic embryogenesis experiments performed with media lacking additional copper produced embryos difficult to distinguish from the non-embryogenic callus because they were too small [2]. However, the inclusion of additional copper made the embryos distinct at the early stage of embryogenesis. This was also the case in this study. Presumably, it is due to the fact that Ihemere worked on African cassava varieties.

Callus formation is often considered to inhibit plant regeneration and in cassava plant regeneration from callus has never been possible, neither via organogenesis nor via embryogenesis. It is therefore assumed that the increased capacity of shoot organogenesis is at least partially related to the inhibition of callus formation [24]. Cassava regeneration via organogenesis involves the induction of shoots from young leaf lobes and embryo cotyledons on MS medium supplemented with cytokinins (23 μM zeatin and 44 μM benzylaminopurine) [25,26]. This method results in the regeneration of multiple shoots

	Total number of explants		No. of explants with developed callus		Mean no. of embryonic calli /explants	
	12	0	12	0	12	0
<i>TMS 60444</i>	124.0 ± 1.7	125.0 ± 1.7	40.3 ± 1.2 ^a (32.5%)	94.3 ± 2.3 ^a (75.4%)	12.7 ± 1.8 ^a	127.3 ± 2.3 ^a
<i>Adhiambo Lera</i>	125.7 ± 2.9	121.7 ± 4.9	46.0 ± 2.3 ^b (36.6%)	106.7 ± 1.8 ^b (87.7%)	17.7 ± 2.0 ^{ab}	161.3 ± 5.8 ^b
<i>Kibanda Meno</i>	115.3 ± 2.9	123.7 ± 2.7	36.3 ± 1.8 ^{ab} (31.5%)	91.7 ± 1.2 ^a (74.1%)	13.0 ± 1.7 ^a	130.3 ± 0.9 ^a
<i>Serere</i>	125.0 ± 2.5	122.0 ± 1.2	42.3 ± 2.7 ^{ab} (33.8%)	97.7 ± 2.6 ^a (80.1%)	25.7 ± 2.2 ^b	159.3 ± 1.2 ^b

Medium; MS+12 mg/L 2, 4-D, 50 mg/L Casein Hydrolysate, 0.5 mg/L CuSO₄, Gamborg's B5 Vitamins
Values with the same number are not statistically significant by ANOVA followed by Tukey's pairwise comparisons ($P > 0.05$).

Table 3: Effect of light on somatic embryogenesis.

	Average number of embryonic calli per explant				
	0.0	0.25	0.5	0.75	1
<i>TMS 6044</i>	23.7 ± 2.0 ^a	25.3 ± 1.2 ^a	43.7 ± 1.9 ^a	34.0 ± 0.6 ^a	27.3 ± 3.1 ^a
<i>Adhiambo Lera</i>	31.0 ± 1.2 ^a	33.0 ± 1.7 ^a	62.7 ± 1.2 ^b	53.0 ± 1.7 ^b	44.3 ± 2.5 ^b
<i>Kibanga Meno</i>	25.7 ± 2.2 ^a	32.0 ± 3.2 ^a	52.3 ± 1.9 ^b	50.0 ± 0.6 ^b	39.0 ± 0.6 ^b
<i>Serere</i>	29.0 ± 1.2 ^a	32.0 ± 1.2 ^a	59.0 ± 0.6 ^b	1.7 ± 5.2 ^{ab}	40.0 ± 1.2 ^b

Values with the same letter are not significantly different by ANOVA followed by Tukey's pairwise comparisons ($P > 0.05$).

Table 4: Effect of different CUSO₄ (mg/L) concentrations on somatic embryogenesis of cassava.

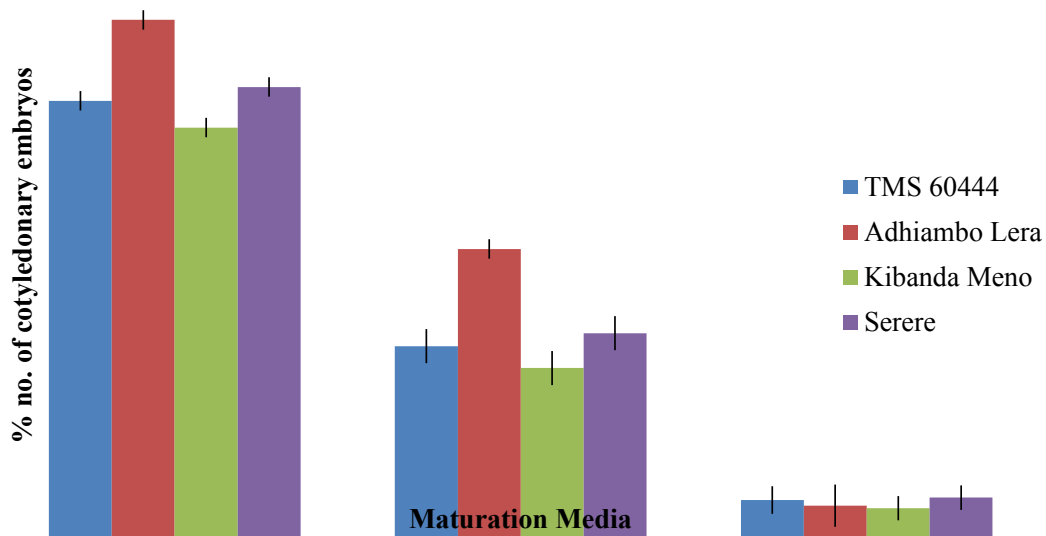


Figure 2: Effects of cytokinins on maturation of somatic embryos.

*MS salts supplemented with 2% (w/v) sucrose, 1 mg/L thiamine-HCl, 100 mg/L myo-inositol, 0.01 mg/L 2,4-D, 1.0 mg/L BAP and 0.5 mg/L GA3

†MS salts supplemented with 2% (w/v) sucrose, 0.01 mg/L NAA, 0.1 mg/L BA and 0.1 mg/L GA3

*MS basal medium supplemented with 2% (w/v) sucrose.

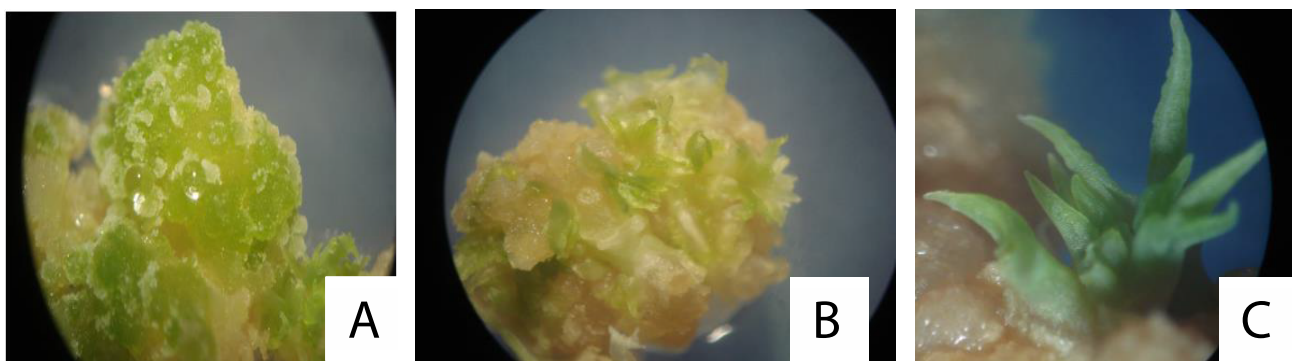


Figure 3: Tissue culture profile of maturation of embryogenic somatic embryos.

A: Greening of embryogenic embryos. **B:** Initiation of shoots. **C:** Formation of distinct shoots.



Figure 4: Recovery of regenerated cassava plantlets.

A: Young cassava plantlets immediately transferred to soil in glass house from growth room plantlets. **B:** Mature cassava plants in glass house. **C:** Mature cassava plantlets in the field outside glasshouse.

Cultivar	Sucrose concentration (percent w/v)			
	0	2	4	6
	No. of embryonic calli			
<i>TMS 6044</i>	0.0 ± 0.0	84.0 ± 2.3 ^a	77.3 ± 1.7 ^a	39.3 ± 1.2 ^a
<i>Adhiambo Lera</i>	0.0 ± 0.0	110.7 ± 5.8 ^c	108.0 ± 2.3 ^b	52.0 ± 1.2 ^c
<i>Kibanga Meno</i>	0.0 ± 0.0	89.3 ± 2.9 ^{ab}	79.0 ± 1.5 ^a	32.0 ± 1.2 ^b
<i>Serere</i>	0.0 ± 0.0	106.3 ± 3.6 ^{bc}	97.0 ± 1.5 ^c	37.3 ± 1.8 ^{ab}

Values with the same letter are not significantly different by one-way ANOVA followed by Tukey's pairwise comparisons (P>0.05).

Table 5: Effect of different sucrose concentrations on somatic embryogenesis.

Cultivar	Mean no. of cotyledonary embryos			
	Initial no. of embryonic calli	Maturation media 1 [†]	Maturation media 2 [†]	Maturation media 3 [‡]
<i>TMS 60444</i>	98.3 ± 1.5	53.3 ± 0.9 ^{bc}	23.9 ± 0.9 ^b	4.7 ± 1.2 ^a
<i>Adhiambo Lera</i>	91.3 ± 0.9	58.3 ± 1.2 ^a	33.0 ± 1.2 ^a	6.3 ± 1.8 ^a
<i>Kibanga Meno</i>	90.7 ± 1.2	46.3 ± 1.5 ^b	19.3 ± 2.0 ^b	3.3 ± 1.2 ^a
<i>Serere</i>	90.7 ± 1.8	50.7 ± 1.2 ^{bc}	23.0 ± 1.7 ^b	4.3 ± 0.9 ^a

Values with the same letters are not significantly different by ANOVA followed by Tukey's pairwise comparisons (P>0.05).

[†]MS salts supplemented with 2 % (w/v) sucrose, 1 mg/L thiamine-HCl, 100 mg/L myo-inositol, 0.01 mg/L 2,4-D, 1.0 mg/L BAP and 0.5 mg/L GA₃; [‡]MS salts supplemented with 2 % (w/v) sucrose, 0.01 mg/L NAA, 0.1 mg/L BA and 0.1 mg/L GA₃; [‡]MS basal medium supplemented with 2 % (w/v) sucrose.

Table 6: Effects of different cytokinins on maturation of somatic embryos

Cultivar	Number of regenerated plants			
	Initial no. of cotyledonary embryos	Germination media 1 [†]	Germination media 2 [†]	Germination media 3 [‡]
<i>TMS 60444</i>	77.7 ± 0.6	22.0 ± 1.5 ^b	23.7 ± 1.8 ^b	63.3 ± 1.5 ^{bc}
<i>Adhiambo Lera</i>	78.7 ± 1.5	31.7 ± 1.2 ^a	37.0 ± 2.5 ^a	76.3 ± 2.3 ^a
<i>Kibanga Meno</i>	82.3 ± 1.5	18.7 ± 0.9 ^b	23.7 ± 0.3 ^b	58.3 ± 1.2 ^c
<i>Serere</i>	79.3 ± 1.9	23.0 ± 0.6 ^b	28.3 ± 0.9 ^b	67.7 ± 1.5 ^b

Values with the same letters are significantly different by ANOVA followed by Tukey's pairwise comparisons (P>0.05).

[†]basal MS medium supplemented with B5 vitamins and 2 % (w/v) sucrose; [†]MS medium supplemented with 2% (w/v) sucrose, 1 mg/L thiamine-HCl, 100 mg/L myo-inositol, 0.01 mg/L 2,4-D, 1.0 mg/L BAP and 0.5 mg/L GA₃; [‡]MS basal salt supplemented with 2 % (w/v) sucrose and 0.8 % (w/v) activated charcoal

Table 7: Germination and Regeneration Frequencies of the four cassava genotypes

but the origin of each shoot is doubtful making it suspect for plant transformation purposes [2]. Embryo development was achieved in medium supplemented with 2% sucrose, 1 mg/L thiamine-HCl, 100 mg/L myo-inositol, 0.01 mg/L 2,4-D, 1.0 mg/L BA and 0.5 mg/L GA₃ was superior to MS medium supplemented with 2% sucrose, 0.01 mg/L NAA, 0.1 mg/L BA and 0.1 mg/L GA₃ and MS medium supplemented with 2% sucrose but devoid of phytohormones. This agrees with [15], who cultured globular stage embryos of cassava on medium without plant growth regulators and achieved the highest rate of regeneration yet in cassava. It can therefore be inferred that phytohormones may only be critical in the induction medium for embryogenesis to occur.

Culturing explants in light at the beginning of the induction process led to reduction in the number of embryos formed. This indicates that light-intensity affects embryogenesis. Embryogenesis in cassava is enhanced by lowering light intensity [21]. Studies on the effect of light on callus growth and somatic embryogenesis from *Lavandula vera* and *Teucrium chamaedrys* showed that the relative length of the incubation period under illumination significantly affected callus growth and somatic embryo induction and proliferation, although in a species-specific fashion. Lavender callus growth was improved under increased incubation in darkness while somatic embryogenesis was remarkably reduced under the same conditions [27]. Further, somatic embryogenesis from some species, such as cucumber, squash, melon and gardenia is promoted under initial culture incubation in darkness [27-29]. It is, thus, thought that lowering the light intensity of the

cultures could have accounted for the high rates of embryogenesis in all the cultivars studied in this research.

Conclusion

In conclusion, this study has optimized a reproducible *in vitro* regeneration pathway of Kenyan genotypes using three Kenyan genotypes viz; *Adhiambo Lera*, *Kibanda Meno* and *Serere* along with an exotic model cultivar *TMS 60444* using immature leaflobes as explants for somatic embryogenesis. It avails an opportunity for further studies on cassava with varying research interests to mitigate the various genetic and phenotypic drawbacks associated with cassava. This also arrests the view that African cassava genotypes are recalcitrant to *in vitro* manipulations.

Acknowledgement

This work is part of a continuing project on genetic engineering of Kenyan cassava genotypes funded by the Danish International Development Agency (DANIDA). The cassava cultivars used in this study were kindly provided by the Kenya Agricultural Research Institute (KARI). Duncan Ogweda is hereby acknowledged for maintenance of explants sources and regenerated plant

References

- Zhang P (2000) Studies on cassava (*Manihot esculenta* Crantz) transformation: towards genetic improvement, Swiss Federal Institute of Technology Zürich.
- Ihemere UE (2003) Somatic embryogenesis and transformation of cassava for enhanced starch production. PhD Thesis, The Ohio State University, Ohio.
- Cock JH (1982) Cassava: a basic energy source in the tropics. *Science* 218:

- 755-762.
4. Koch BM, Sibbesen O, Swain E, Kahn RA, Liangcheng D, et al. (1994) Possible use of a biotechnological approach to optimize and regulate the content and distribution of cyanogenic glucosides in cassava (*Manihot esculenta* Crantz) to increase food safety. *Acta Horticultura* 375: 45-60.
 5. Rosling H, Mlingi N, Tylleskar T, Banea M (1993) Causal mechanisms behind human diseases induced by cyanide exposure from cassava. In: Roca W, Thro A (eds.) Proceedings of the First International Scientific Meeting of the Cassava Biotechnology Network, Centro Internacional de Agricultura Tropical, Cali, Colombia, pp. 366-375.
 6. Omole TA (1977) Cassava in the nutrition of layers IDRC, Ottawa Canada.
 7. Cock JH (1985) Cassava: new potential for a neglected crop. Westview Press Boulder, London.
 8. Thresh JM, Fargette D, Otim-Nape GW (1994) Effects of African cassava mosaic geminivirus on the yield of cassava. *Trop Sci* 34: 26-42.
 9. Belloti AC, Smith L, Lapointe SL (1999) Recent advances in cassava pest management. *Annual Review of Entomology* 44: 343-370.
 10. Wenham JE (1995) Post-harvest deterioration of cassava: A biotechnology perspective. *FAO Plant Production and Protection Paper* 130.
 11. Li HQ, Huang YW, Liang CY, Guo JY, Liu HX, et al. (1998) Regeneration of cassava plants via shoot organogenesis. *Plant Cell Reports* 17: 410-414.
 12. Stamp JA, Henshaw GG (1987) Somatic embryogenesis from clonal leaf tissue of cassava. *Ann Bot* 59: 445-450.
 13. Szabados L, Hoyos R, Roca W (1987) In vitro somatic embryogenesis and plant regeneration of cassava. *Plant Cell Rep* 6: 248-251.
 14. Taylor NJ, Henshaw GG (1993) The induction of somatic embryogenesis in fifteen African and one South American cassava cultivars. In: Roca WM, Thro AM (eds.) Proceedings First International Scientific Meeting of the Cassava Biotechnology Network, Cartagena, Colombia, pp. 134-140.
 15. Mathews H, Schopke C, Carcamo R, Chavarriaga P, Fauquet L (1993) Improvement of somatic embryogenesis and plant recovery in cassava. *Plant Cell Reports* 12: 328-333.
 16. Raemakers CJ, Bessembinder J, Staritsky G, Jacobsen E, Visser R (1993) Induction, germination and shoot development of somatic embryos in cassava. *Plant Cell Tiss Org Cult* 33: 151-156.
 17. Konan NK, Sangwan RS, SangwanNorreel BS (1994) Somatic embryogenesis from cultured mature cotyledons of cassava (*Manihot esculenta* Crantz). *Plant Cell Tissue Organ Culture* 37: 91-102.
 18. Taylor NJ, Clarke M, Henshaw GG (1992) The induction of somatic embryogenesis in 15 African and one South American cassava cultivars. In: Roca WM, Thro AM (eds.) Proceedings of the First International Scientific Meeting of the Cassava Biotechnology Network, Cartagena, Colombia August . Working Document 123. Cali, Colombia CIAT.
 19. Murashige T, Skoog F (1962) A revised medium for rapid growth and bioassays with tobacco tissue culture. *Plant Physiology* 15: 473-497.
 20. Schopke C, Franche C, Bogusz D, Chavarriaga P, Fauquet C, et al. (1992) Transformation in cassava (*Manihot esculenta* Crantz) In: Bajaj YPS (ed.) *Biotechnology in Agriculture and Forestry*, Springer Verlag (in press).
 21. Raemakers CJJM, Sofiari E, Jacobsen E, Visser RGF (1997) Regeneration and transformation of cassava. *Euphytica* 96: 153-161.
 22. Finer JJ, Nagasawa J (1988) Development of an embryogenic suspension culture of soybean [*Glycine max* (L.) Merrill]. *Plant Cell Tiss Org Cult* 15: 125-136.
 23. PuontiKaerlas J, Frey P, Potrykus I (1998) Competence for embryogenesis and organogenesis in cassava. In: Pires de Matos A, Vilarinhos (eds.) Proc. IV Int Scientific Meeting of the Cassava Biotechnology Network. Brasil.
 24. Zhang P, Phansiri S, PuontiKaerlas J (2001) Improvement of cassava shoot organogenesis by the use of silver nitrate in vitro. *Plant Cell Tiss Org Cult* 67:47-54.
 25. Guohua M (1998) Effects of cytokinins and auxins on cassava shoot organogenesis and somatic embryogenesis from somatic embryo explants. *Plant Cell Tiss Org Cult* 54: 1-7.
 26. Mussio I, Chaput MH, Serraf I, Ducreux G, Sihachakr D (1998) Adventitious shoot regeneration from leaf explants of an African clone of cassava (*Manihot esculenta* Crantz) and analysis of the conformity of regenerated plants. *Plant Cell Tissue and Organ Culture* 53: 205-211.
 27. Spiridon K, Panagiotis T, Charalambos P, Vlassios G, John D (2002) The Effects of Light on Callus Growth and Somatic Embryogenesis from *Lavandula vera* and *Teucrium chamaedrys*: A Preliminary Study. *Journal of Herbs, Spices & Medicinal Plants* 9: 223-227.
 28. Cade RM, Wehner TC, Blazich FA (1988) Embryogenesis from cotyledon-derived callus of *Cucumis sativus* L. *Cucurbit Genet Coop Rep* 11: 3-4.
 29. Kintzios S, Hioureas G, Shortsiianitis E, Sereti E, Blouchos P, et al. (1998) The effect of light on the induction development and maturation of somatic embryos from various horticultural and ornamental species. *Acta Horticulturae* 461: 427-432.