

## Natural Vulnerability Estimate of Groundwater Resources in the Coastal Area of Ibaka Community, Using Dar Zarrouk Geoelectrical Parameters

Evans UF<sup>1\*</sup>, Abdulsalam NN<sup>2</sup> and Mallam A<sup>2</sup>

<sup>1</sup>Department of Sciences, Maritime Academy of Nigeria, Oron, Nigeria

<sup>2</sup>Department of Physics, University of Abuja, Nigeria

### Abstract

The study is aimed at estimating the natural vulnerability of groundwater resources using Dar Zarrouk geoelectrical parameters. Hence, ground-based earth resistance measuring device (OYO McOHM resistivity meter, Model 2115A) and its accessories were deployed for the study. 15 Schlumberger vertical electrical soundings (VES) points distributed along three profiles within the Mbo plain area were conducted. The VES field data were interpreted manually on bi-logarithmic plot and then by applying the auxiliary point-partial resistivity curve matching technique. The interpretation was enhanced by sophisticated computer software (IPI2Win). The Dar Zarrouk geoelectrical parameters were deduced from the advanced interpreted results and used to produce contour maps. The lithology identified was of sands sequence of different grain sizes for aquifer zone. The absence of clay formation in the lithology log and low resistivity value (21.49  $\Omega$ m) at aquifer's depth within the VES 5 column suggested saline water ingress. The low range of overburden thickness lies between 0.3 and 4.6 m. The associated overburden longitudinal conductance was found to range from 0.000 to 0.019 Siemens, which was generally low. Therefore, suggesting that groundwater resources in the study area are vulnerable to contamination. Hence, aquifers in the study area were considered to be at high risk of contamination from environmental activities and saline water ingress. The information from study could help in the planning, monitoring and management of potable water supply and development in deltaic coastal aquifer system.

**Keywords:** Dar Zarrouk geoelectrical parameters; Lithology; Groundwater; Protection capacity; Aquifer

### Introduction

Water resources in the entire Niger Delta are threatened by increasing exploration for oil and gas which has not only increased the demand for potable water due to population influx, but has also contaminated most of the surface water means. Groundwater resources are not free from contamination; however some local geologic formations have the potential to protect groundwater resources from contamination, which can occur naturally or artificially. The natural vulnerability expresses the sensitivity of aquifers to be adversely impacted upon by an imposed contaminant loads. The natural contamination of groundwater resources in coastal areas have been traced to the hydraulic connection between groundwater and seawater [1]. Seawater has the natural advantage of higher hydraulic pressure (due to higher mineral contents and sea level rise), therefore will always migrate into freshwater thereby contaminating the aquifers. At saline water ingress, groundwater system is overridden by a wedge of higher saline water that grades into seawater. The Dar-Zarrouk (D-Z) variables provide easily decipherable vision about the occurrence and distribution of fresh and saline water aquifers.

Freshwater aquifers contamination can also occur artificially by some anthropogenic activities such as navigation channels, drainage channels, agriculture, hysterical leakages of products from oil and gas installations such as pipelines and storage tanks and mobile vessels (oil tankers) and pumping of groundwater from coastal freshwater wells, etc. Contamination effect on groundwater resources can become very serious where the geologic materials are not capable of protecting the aquifers in an area [1]. Groundwater contamination makes an aquifer endorheic, this puts the populace at high risk of waterborne diseases, since some soil borne verses can survive for days in unsaturated zone, and eventually get to the saturated zone [2].

Resistivity of earth materials is widely influenced by a number of factors including salinity, moisture content, metallic mineral content,

porosity, clay content, temperature and resistivity of pore fluid. Deviation of the resistivity of rock layer from that of the country rock indicates anomaly. Resistivity survey seeks to delineate anomalies, which are representations of the ground conditions. Ideally, in a clayey or saline environment, high resistivity anomalies are most probably indicators of potable water; while low resistivity anomalies would be the target for groundwater exploration in basement terrain.

Electrical resistivity data have a threefold intention: to identify external corrosion threat on buried facilities [3-6]; identify ore bodies, depth to bedrock and other geological processes [7] and for groundwater resources and environmental protection and management. The combination of thickness and resistivity of the overburden rock into single variables known as Dar Zarrouk parameters [8,9] can be used as a plinth for a proper estimation of the safety condition of aquifers as well as the protection of groundwater resources in any environment [6,10,11].

Researchers noted that groundwater is also susceptible to pollution from infiltration of leachate due to decomposed refuse from dump sites as well as leakage from septic tanks of various houses [12-14]. However, despite the large numbers of hydrogeological studies within the vicinity of the study area [15-17] only aquifer potential and groundwater reserve had been addressed using interpreted resistivity value of earth materials. Issues bordering on the safety of the aquifers within the study

\*Corresponding author: Evans UF, Department of Sciences, Maritime Academy of Nigeria, Oron, Nigeria, Tel: +234 1 738 4132; E-mail: [egeosystems2@gmail.com](mailto:egeosystems2@gmail.com)

Received April 07, 2017; Accepted May 23, 2017; Published May 30, 2017

**Citation:** Evans UF, Abdulsalam NN, Mallam A (2017) Natural Vulnerability Estimate of Groundwater Resources in the Coastal Area of Ibaka Community, Using Dar Zarrouk Geoelectrical Parameters. J Geol Geophys 6: 295. doi: 10.4172/2381-8719.1000295

**Copyright:** © 2017 Evans UF, et al. This is an open-access article distributed under the terms of the Creative Commons Attribution License, which permits unrestricted use, distribution, and reproduction in any medium, provided the original author and source are credited.

area are yet to receive adequate attention. It is for the purpose of safety of the rapid growing population witnessed in the study area that this investigation is carried out to ascertain the vulnerable level of aquifers in the area. Hence, the prime objective of this study to identify the local lithology and to determine if the local geologic formation has the natural capacity of protecting groundwater resources in the study area from contamination using Dar Zarrouk geoelectrical parameters.

### Physiography, Geology and Hydrogeology

Akwa Ibom State lies entirely within coastal plain sand (otherwise known as the Benin Formation), which is a deltaic deposition environment and has a thickness in excess of about 800 m. The Benin formation extends from the west across the Niger Delta and southward beyond the present coastline. It is over 90 percent sandstone with silicon as the dominant element, though some places have minor shale intercalations. It is coarse grained, gravely, locally fine grained, poorly sorted, sub-angular to well-rounded, and bears lignite streaks and wood fragments. The Benin formation is thus partly marine, partly deltaic, partly estuarine and partly lagoonal and fluviolacustrine in origin [13]. Its age ranges from Miocene to recent. The terrain of the area is characterized by two types of land forms: highly undulating ridges and nearly flat topography. Various structural units (point bars, channel fills, natural levees, back swamp deposits and oxbow fills) are

particular within the formation indicating the variability of the shallow water depositional medium [18]. Stratigraphically, the coastal plain sand is overlain by recent alluvium and recent sediments and underlain by the Agbada formation. Its outcrop lateral equivalent is probably the Bende Amake sands (Figure 1). The coastal plain sand harbours prolific aquifers, which are the major source of potable water for domestic, agricultural, and industrial use in the study area [19].

### Materials and Methods

The technique of the vertical electrical soundings with Schlumberger array was used for imaging the vertical variations in the ground electrical properties. The technique consists of a quite fast and versatile procedure of geophysical investigation. In addition, it is an extensively known technique to determine the location of the water table [9,15,16,20], whose information is essential for the elaboration of the piezometric surface map. The OYO McOHM resistivity meter (Model 2115A) was used to carry out 15 soundings along three profiles in July, 2016 in Ibaka community, Mbo Local Government Area. Electrodes were configured such that potential electrodes also called the inner electrodes (MN) were nested between the current electrodes (AB) also known as outer electrodes. The current electrodes separation was gradually adjusted (from 1 m to a maximum of 300 or 400 m depending on the terrain) to ensure the progressive penetration of

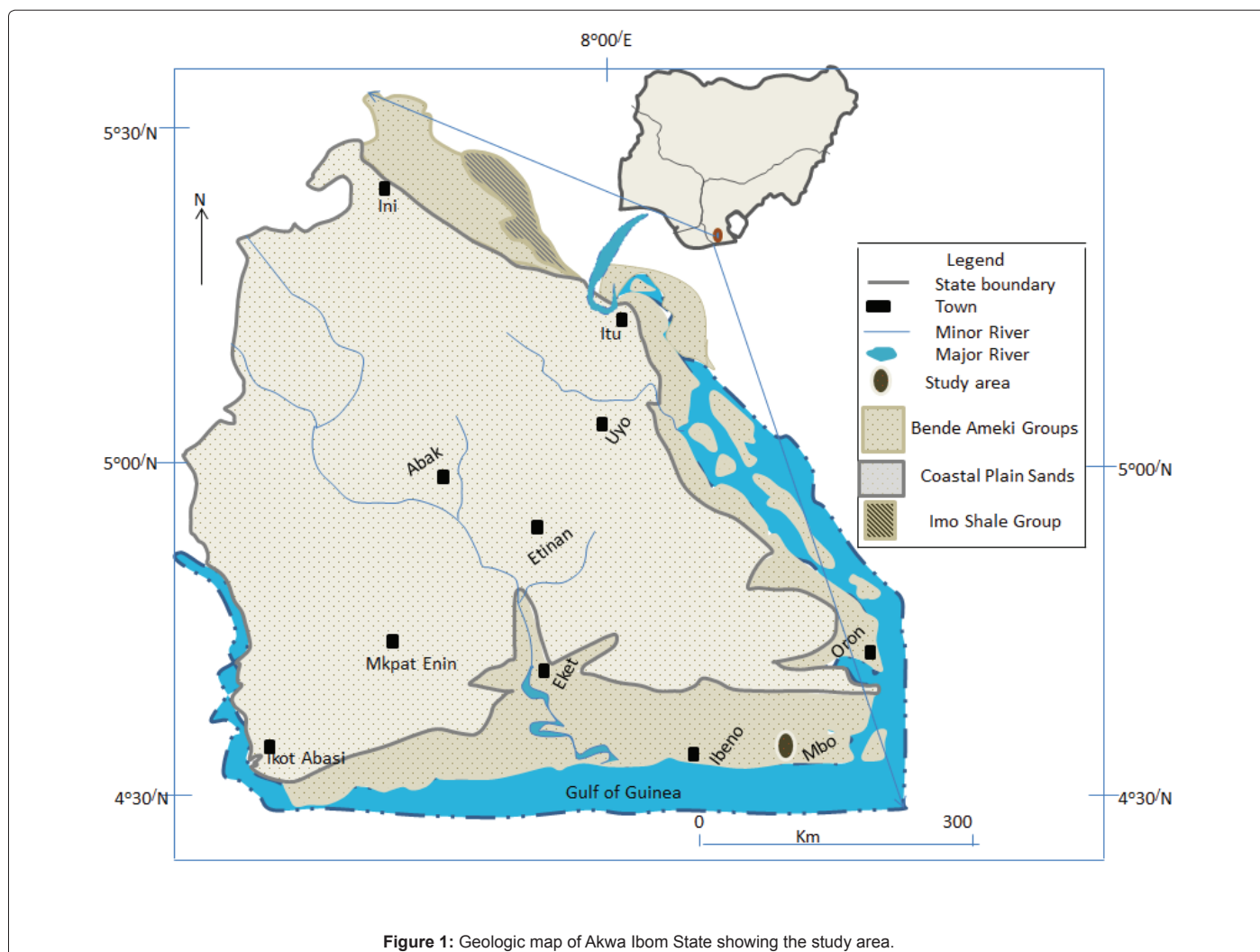


Figure 1: Geologic map of Akwa Ibom State showing the study area.

current into deeper layers. The potential electrodes (MN) separation was also adjusted from a minimum of 0.5 m to a maximum of 15 m. The adjustment was controlled such that MN separation did not exceed 1/5 of half AB separation in order to maintain measurable subsurface electrical potential.

The quantitative treatment of field data started with the conversion of measured resistance ( $R_a$ ) to apparent resistivity ( $\rho_a$ ) using a standard equation given as

$$\rho_a = \pi \left[ \frac{\left(\frac{AB}{2}\right)^2 - \left(\frac{MN}{2}\right)^2}{MN} \right] * \frac{\Delta V}{I} \quad (1)$$

Data obtained were manually plotted on bi-logarithmic graph to produce apparent resistivity against half current electrodes spacing curves. The curves were manually smoothed to check resistivity curve discontinuities generated by different "MN" spacing of the same "AB" spacing induced by lateral inhomogeneity, anisotropy effect and other signatures arising from ambient noise on the resistivity curves [14,16,21]. Smoothed curves were subjected to curve matching procedure using master curves (Figure 2). Data obtained were inputted into the computer for inversion modeling interpretation using the IPI2Win computer software which generated models of the subsurface resistivity variation with depth. The inversion yielded resistivity models with fitting error between the observed and theoretical resistivity values of less than 10% and was considered to produce valued results. In addition, the computer processed and interpreted VES curves yielded geoelectrical layer thickness as close as possible to the actual values of boreholes information in the study area (Figure 3). This was important because VES results are influenced by a number of factors such as salinity, lithology, water content, clay content and porosity [11,22].

The combination of subsurface resistivity and thickness into single parameter (Figure 4) gives rise to the Dar Zarrouk parameters deployed for the study. For a sequence of n horizontal stratified, homogeneous and isotropic layered earth model of resistivity  $\rho_i$  and thickness  $h_i$ , Orellana [20] and Zohdy [23] presented the combinations of the layer parameters ( $\rho_i$  and  $h_i$ ) as

$$S_i = \sum_{i=1}^n \frac{h_i}{\rho_i} \quad (2)$$

and

$$T_i = \sum_{i=1}^n \rho_i * h_i \quad (3)$$

where  $S_i$  and  $T_i$  represent longitudinal conductance (Siemens) and transverse resistance (ohm-m<sup>2</sup>) respectively. The combined resistance and thickness of earth layers was necessary because it checks some limitations, such as: heterogeneities effects, topographic effect and assumptions that beddings are horizontal associated with VES data interpretation. There was a need to correct for aquifers' resistivity in order to determine the hydrogeological characteristics of the underground water [24,25]. Hence, transverse resistance ( $T$ ) was applied to reveal resistive layer confined between two or more conductive layers. While conductive layer sandwiched between two or more resistive layers was unraveled by its horizontal conductance ( $S$ ). Therefore, analysis of Dar Zarrouk parameters was used as the basis for evaluating the groundwater properties such as aquifers' transmissivity, and groundwater resources protection. In order to determine the values for transmissivity, aquifers' hydraulic conductance were computed from

$$K = \varepsilon R_{aq}^{-0.93283} \quad (4)$$

where  $\varepsilon$  is an empirical constant given by 386.4 for coastal aquifers and  $R_{aq}$  is the aquifer's resistivity. According to Singh [24], Braga et al. [9] and Harb et al. [26] aquifer transmissivity is the product of its hydraulic conductivity and layer thickness ( $h_i$ ), mathematically represented as

$$T_r = Kh \quad (5)$$

The transverse resistivity ( $\rho_T$ ), longitudinal resistivity ( $\rho_L$ ), pseudoanisotropy ( $\lambda$ ) and the root mean square resistivity ( $\rho_{rms}$ ) were determined using equations (6, 7, 8 and 9 respectively). This further helps in reducing ambiguities related to VES interpretation, which are mainly produced by principles of equivalence and suppression and cause intermixing in identifying depth limits for the electrical zones during interpretation.

$$\rho_T = \frac{T_i}{d_i} \quad (6)$$

$$\rho_L = \frac{d_i}{S_i} \quad (7)$$

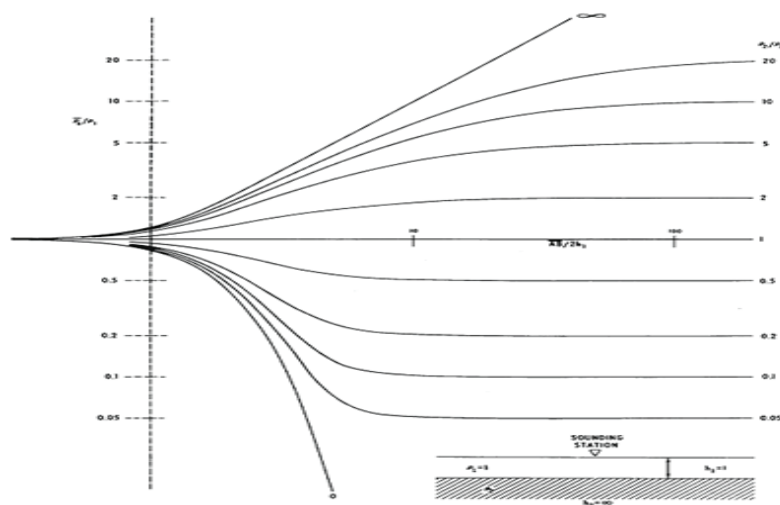


Figure 2: Two-layer master set of sounding curves for the interpretation of manually smoothed field curves [23].

$$\lambda_i = \left[ \frac{T_i/d_i}{d_i/S_i} \right]^{\frac{1}{2}} \tag{8}$$

$$\rho_{rms} = [\rho_T \times \rho_L]^{\frac{1}{2}} \tag{9}$$

## Results and Discussion

The quantitative interpretation of VES provided geoelectrical information characterized by the values of resistivity and thickness (Table 1). Quantitatively, the correlation of geoelectrical interpreted

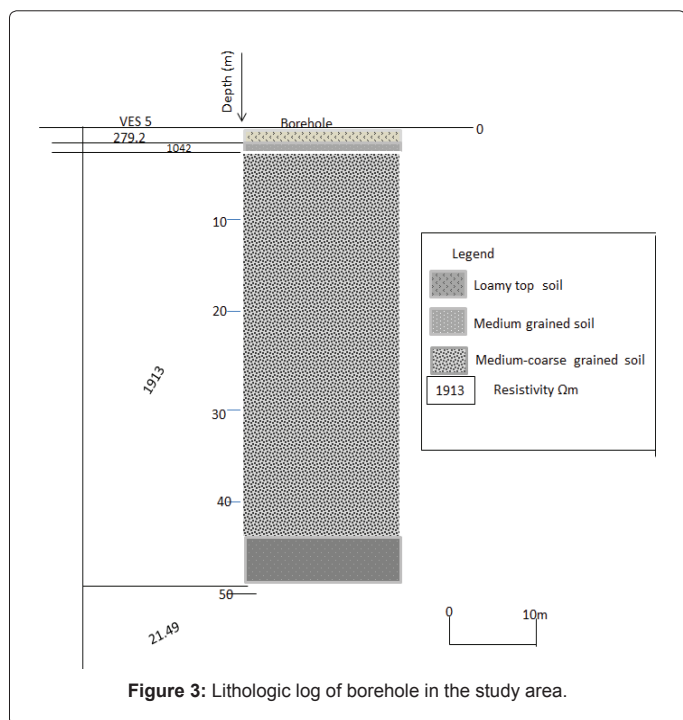


Figure 3: Lithologic log of borehole in the study area.

depth with borehole depth (near VES 5) produced a strong result (Figure 5) with a correlation coefficient of 0.98. This gave the researchers more confident that the VES data interpreted represents to a great extent, the true nature of the local geology of the study area.

The interpretation also determines a shallow depth water table (about 1.5 m), which was used to define the unsaturated sediments and saturated sediments for the study area as presented in Table 2. It is a geoelectrical model correlated with the local lithology in items of prevalence of rock type. The lithology succession which defines the stratigraphic sequence for the study area shows that the aquifers are unconfined. The combination of Tables 1 and 2 aided the understanding of the spatial variation of geoelectrical parameters which demarcated the fresh water bodies and envisaged the identification of saline water ingress. This informed the interpretation of the relatively low resistivity value (21.49 Ωm) observed at the 4<sup>th</sup> geoelectrical layer along VES 5 column as saline water ingress into the aquifer. The attribution of low resistivity at this depth to saline water ingress is because there were no records of clay layer formation at this depth in the study area.

This is further supported by the fact that, in sedimentary environment high resistivity may largely be associated with the presence of fresh water in porous medium aquifer, while low resistivity may be due to the presence of clay or brackish water [25,27]. The facies variations were identified to be sands of various grain sizes forming the saturation sediments.

Table 3 presents Dar Zarrouk (D-Z) geoelectrical parameters deduced for the study area. These parameters were used to characterize aquifers, delineate the groundwater potential zones, its lateral extent and to estimate the aquifer protective capacity in the area as well as assessing its recharge capability. The low resistivity zone of the map is assumed to be the area of saline water ingress from the Atlantic Ocean. Arising from Table 3, contour maps for longitudinal conductance (S), transverse resistance (T), transverse resistivity (ρ<sub>t</sub>), longitudinal resistivity (ρ<sub>l</sub>), pseudoanisotropy (λ) and root mean square resistivity (ρ<sub>rms</sub>) were constructed.

Figure 6 presents groundwater zone for the study area showing iso-resistivity (using rms values) and isopach maps of the saturated sediments. The root mean square (rms) value was preferred to the direct

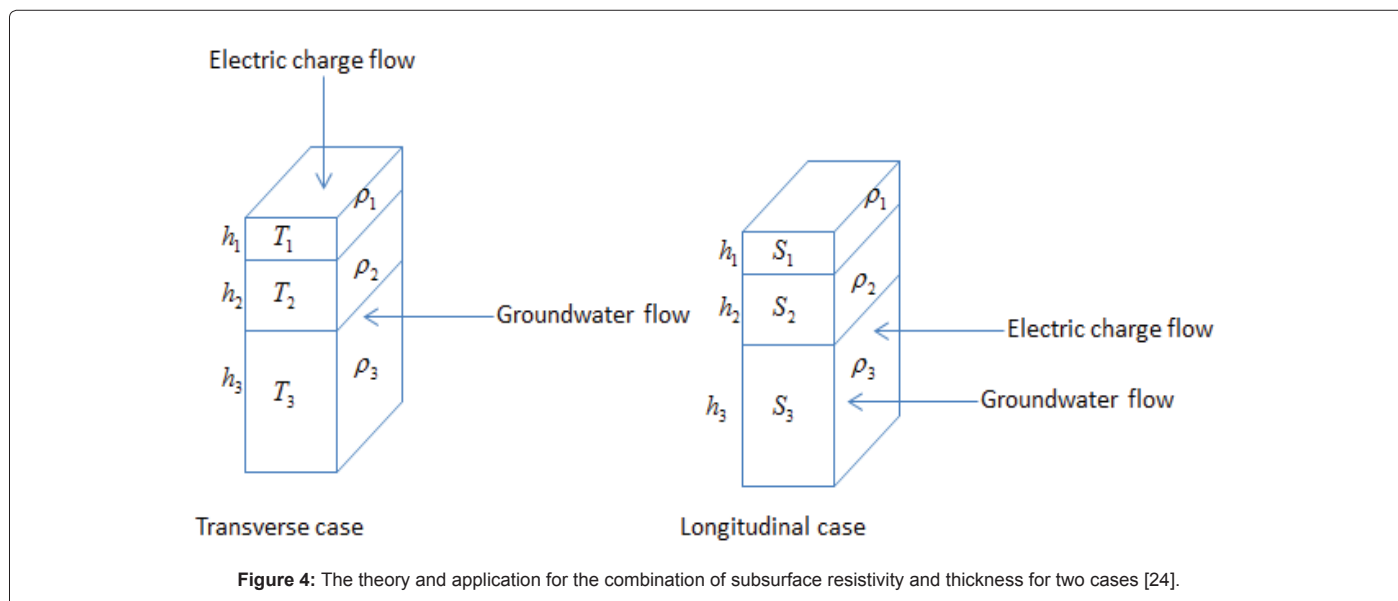


Figure 4: The theory and application for the combination of subsurface resistivity and thickness for two cases [24].

VES	N	$\rho \Omega m$	$\rho \Omega m$	$\rho \Omega m$	$\rho \Omega m$	d1 m	d2 m	d3 m	h1 m	h2 m	h3 m	% Er	Curve	Lat	Long
1	4	90.3	683	1390	368	0.5	12.5	42.4	0.5	12	29.9	1.1	AK	4.653	8.314
2	3	485	167	2383	-	2.3	4.73	-	2.3	2.5	-	2.2	H	4.633	8.305
3	4	154	475	4021	491	2.72	12.2	62.9	2.72	9.48	50.7	1.6	AK	4.645	8.302
4	3	398	285	5867	-	1.9	10.8	-	1.9	8.9	-	2.2	H	4.638	8.286
5	4	279.2	1042	1913	21.49	0.3	7	48.9	0.3	6.7	41.9	2.3	AK	4.663	8.251
6	3	42.4	2923	5579	-	0.8	7.9	-	0.8	7.2	-	2.3	A	4.68	8.242
7	3	510	4221	510	-	4.1	27.8	-	4.6	23.7	-	1.8	K	4.696	8.26
8	4	1010	4736	2787	1464	0.8	10.6	26.7	0.8	9.8	15.6	1.4	KH	4.703	8.245
9	4	1010	473	2847	1489	0.8	10.1	24.6	0.8	9.7	14	1.5	HK	4.684	8.263
10	3	867	6130	1587	-	3	18.6	-	3	15.5	-	1.9	K	4.687	8.264
11	3	53.1	1282	1586	-	0.5	19.1	-	0.5	18.6	-	2	A	4.711	8.26
12	3	42.4	1132	64.6	-	0.5	5.9	-	0.5	5.4	-	2.9	H	4.735	8.251
13	4	388	1596	8561	126	1	12.2	46.2	1	11.3	34	1.3	AK	4.804	8.219
14	4	365	1576	7581	117	1.1	14.5	47.3	1.1	13.3	32.8	1.6	AK	4.803	8.256
15	4	203.3	2532	629.4	845	0.5	1.34	9.58	0.5	0.8	8.2	4.5	AK	4.802	8.261

Table 1: Interpreted VES data for the subsurface studied.

Sediment	Lithology	Geoelectrical resistivity $\Omega m$
Unsaturated sediments	Loamy top soil	$42.4 \leq \rho \leq 1184$
Saturated sediments	Medium grain sand layer	$167 \leq \rho \leq 6130$
	Medium-coarse grain sand layer	$510 \leq \rho \leq 8561$
	Medium grain sand layer	$117 \leq \rho \leq 1489$

Table 2: Identified lithology for the study area.

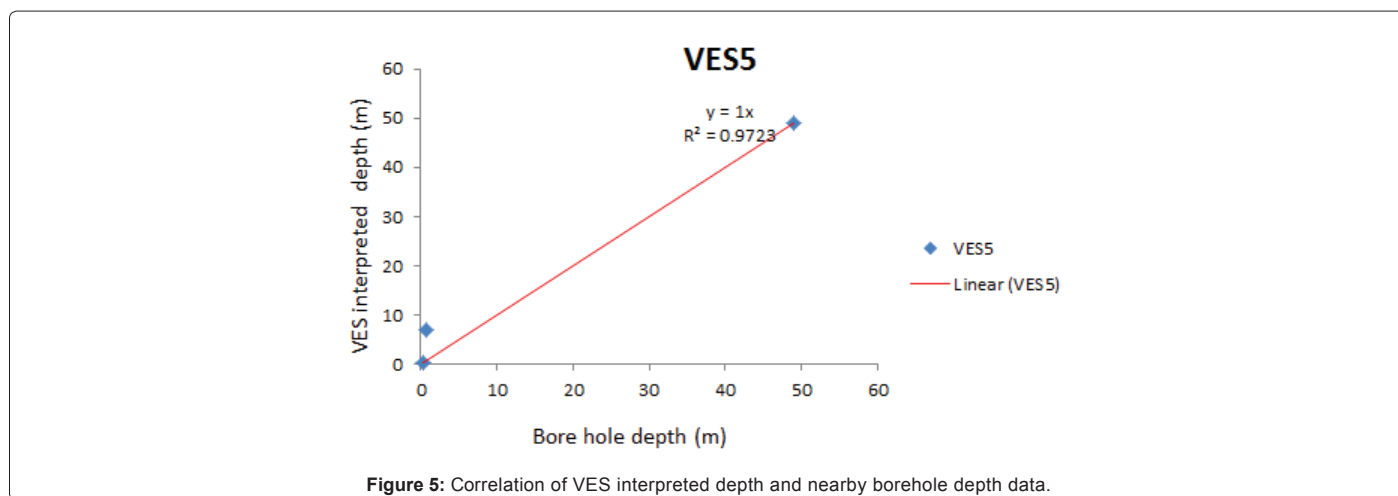


Figure 5: Correlation of VES interpreted depth and nearby borehole depth data.

VES	$\rho (\Omega m)$	h(m)	S(Siemens)	T ( $\Omega m^2$ )	K(m/day)	Tr(m <sup>2</sup> /day)	$\rho_r(\Omega m)$	$\rho_l(\Omega m)$	$\lambda$	$\rho_{rms}(\Omega m)$
1	1390	29.2	0.021	40588	0.452	13.198	957.26	2019.05	0.69	1390.2
2	167	2.5	0.015	417.5	3.263	8.158	88.27	315.33	0.53	166.8
3	4021	50.7	0.0126	203864.7	0.1678	8.508	48.81	4992.06	0.1	493.6
4	285	8.9	0.0312	2536.5	1.9819	17.639	234.86	346.15	0.82	285.1
5	1913	41.9	0.0219	80154.7	0.3355	44.219	1639.16	2232.88	0.86	1913.3
6	2923	7.2	0.0025	21045.6	0.2259	1.626	2664	3160	0.92	2901.4
7	4221	23.7	0.0056	100037.7	0.1604	3.801	3598.48	4964.29	0.85	4226.6
8	2787	15.6	0.0056	43477.2	0.2362	3.685	1628.36	4767.86	0.58	2786.4
9	2847	14	0.0049	39858	0.2317	3.244	1620.24	5020.41	0.57	2852.1
10	6130	15.5	0.0025	95015	0.1132	1.755	5108.33	7440	0.83	6164.8
11	1282	18.6	0.0141	23845.2	0.4874	9.066	1248.44	1354.61	0.96	1300.4
12	1132	5.4	0.0048	6112.8	0.5474	2.956	1091.57	1229.17	0.94	1158.3
13	8561	34	0.0034	291074	0.0929	3.046	6300.38	13288.24	0.67	9149.9
14	7581	32.8	0.0043	248656.8	0.402	5.829	5257.01	11000	0.69	7604.4
15	629.4	8.2	0.013	5161.08	0.9465	7.761	543.27	736.92	0.85	632.7

Table 3: Dar Zarrouk geoelectrical parameters computed for aquifer zone in the study area.



interpreted georesistivity because it further eliminates uncertainties from the interpreted results as well as helps in checking the certainty in the calculations of transverse resistivity ( $\rho_T$ ) and longitudinal resistivity ( $\rho_L$ ). It also justifies the consistency in the data.

The contour maps for transverse resistance, transmissivity, longitudinal conductance and anisotropy (Figure 7) clearly demonstrate the contour patterns of saline and fresh water aquifers over large regions with distinctly clear intermixing boundaries. This aided the

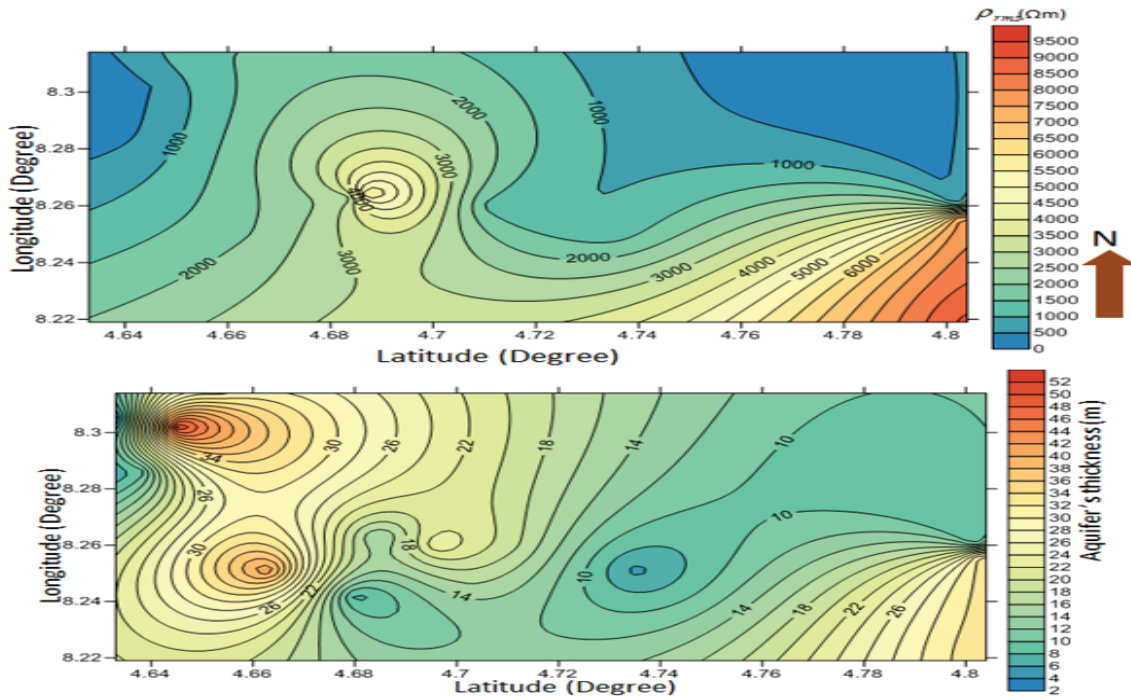


Figure 6: Contour map for groundwater zone showing aquifers rms resistivity at C.I. of 500  $\Omega$ m and thickness at C.I. of 2 m.

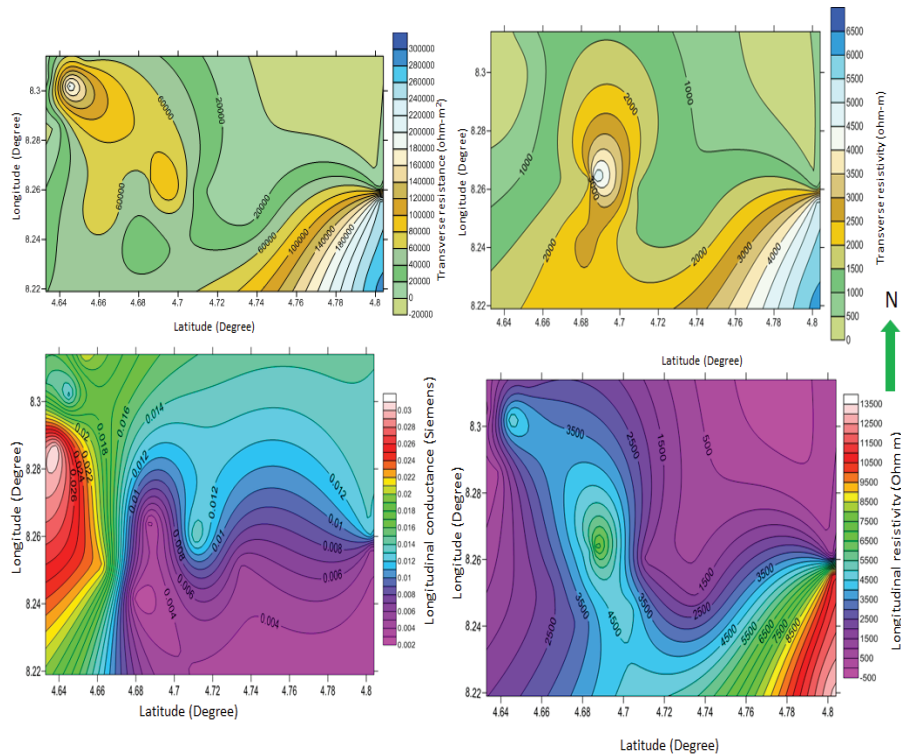


Figure 7: Contour maps of aquifer's D-Z geoelectrical properties for the study area.

identification of fresh water and saline water in the subsurface of the coastal environment studied. Besides, it provides useful evidences to overcome the problem of uncertainty, caused by resistivity data interpretation [24]. The maps of Dar Zarrouk geoelectrical parameters computed show that the transverse resistance (T) values were very high towards the Southeast part of the study area (Figure 7). Similar pictures are obtained for transverse resistivity and longitudinal resistivity maps, with the higher values directed towards the Southeast and these suggest the fresh water region. In sedimentary basins, high values of transverse resistance of phreatic zone is a pointer to aquifers interest, while the total longitudinal conductance of vadose layers best predicts the safety conditions of the aquifers [10,12].

The pseudoanisotropy ( $\lambda$ ) of the aquifer zone for the study area calculated for every VES geoelectric column shows that all of the results gave value within the range  $0.96 \geq \lambda \geq 0.1$ . The low values of anisotropy indicate that the rock constituting that aquifer's unit in the study area do not differ significantly. This is typical of sedimentary formation. Figure 8 is the anisotropy map of the aquifer unit in the study area.

To determine the protective capacity of the aquifer zone (saturated zone) by the overburden using D-Z geoelectrical parameter, Table 4 was constructed for every VES point. Considering the overburden longitudinal conductance range ( $0.1 \leq S > 10$  Siemens) for weak excellent protective capacity published by researchers [6,9,10,28,29], the overburden protection potential could be considered as being proportional to the ratio of thickness to resistivity (longitudinal conductance).

The low range of overburden thickness (between 0.3-4.6 m) as well as the associated low values for overburden's longitudinal conductance (0.000-0.019 Siemens) suggested that aquifers in the study area are not naturally protected, therefore, are at probable high risk of contamination from environmental activities and saline water ingress. This result is in support of Orza and Panea [30] and Emmanuel [21]. They noted in their study on "estimation of the natural protective capacity of an aquifer system using surface geophysical" that low overburden's longitudinal conductance is an indicator of low protective capacity of the aquifer by the overburden materials. Figure 9 is the map of the overburden protective nature determined for the area studied.

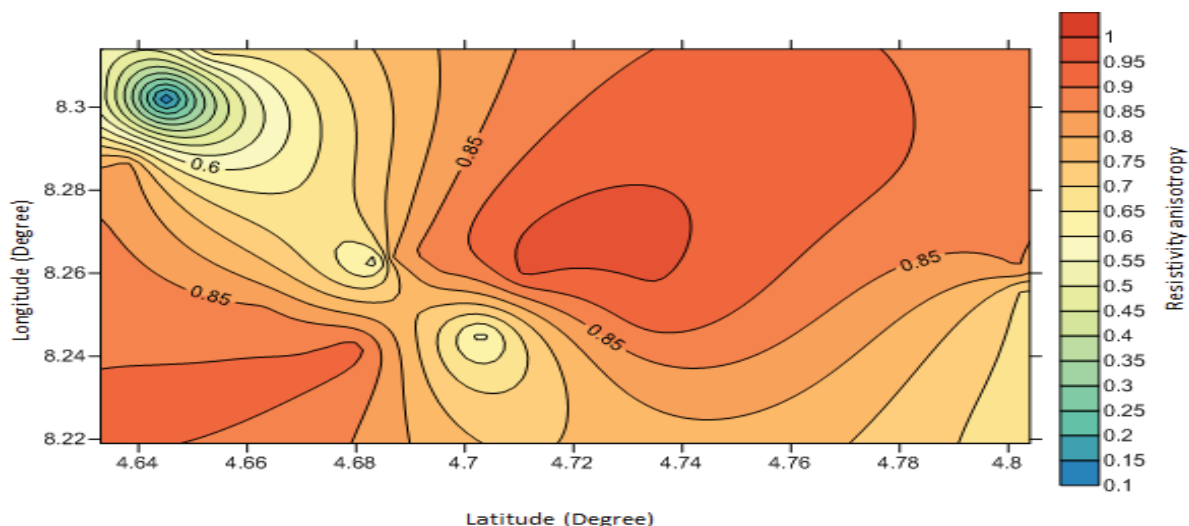


Figure 8: Resistivity anisotropy map for aquifer unit studied at C.I. of 0.5.

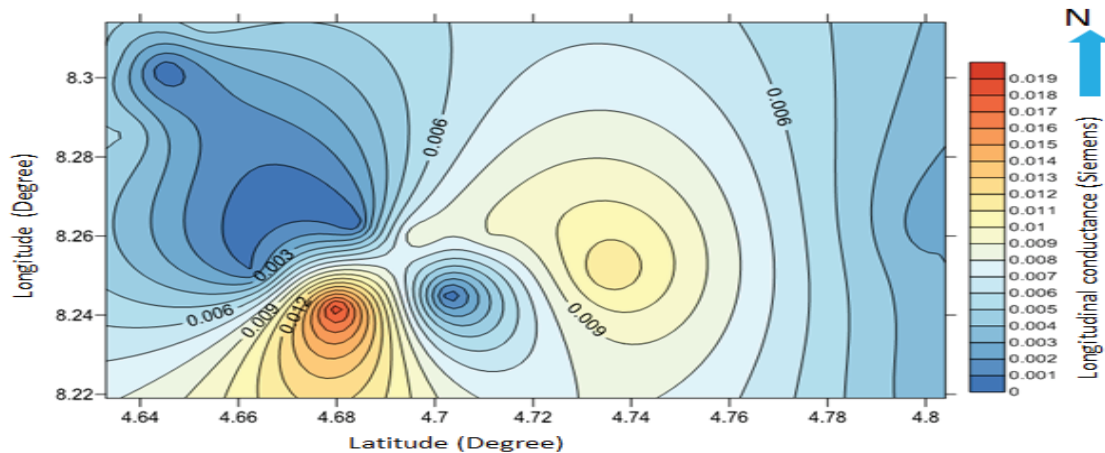


Figure 9: Contour map of overburden materials showing low longitudinal conductance of the study area at C.I. of 0.001.

VES	$\rho(\Omega m)$	$h_1(m)$	Lat	Long	S(Siemens)	Remark
1	90.3	0.5	4.653	8.314	0.006	V
2	485	2.3	4.633	8.305	0.005	V
3	1184	0.8	4.645	8.302	0	V
4	398	1.9	4.638	8.286	0.005	V
5	279.2	0.3	4.663	8.251	0.001	V
6	42.4	0.8	4.68	8.242	0.019	V
7	510	4.6	4.696	8.26	0.009	V
8	1010	0.8	4.703	8.245	0	V
9	1010	0.8	4.684	8.263	0	V
10	867	3	4.687	8.264	0.003	V
11	53.1	0.5	4.711	8.26	0.009	V
12	42.4	0.5	4.735	8.251	0.012	V
13	388	1	4.804	8.219	0.003	V
14	365	1.1	4.803	8.256	0.003	V
15	203.3	0.5	4.802	8.261	0.002	V

**Table 4:** Dar Zarrouk parameter and groundwater resources vulnerability [V indicates vulnerability of groundwater resources to contamination].

## Conclusion

The study was aimed at identifying lithology, estimating the relationship between Dar Zarrouk (D-Z) parameters and geoelectrical resistivity with groundwater resources protection. Geophysical technique involving the use of ground-based earth resistance measuring device was used to measure geoelectrical properties of the subsurface. Interpreted data shows that the aquifers delineated are unconfined and consist of sands of medium grain sizes. The high rms resistivity of the subsurface indicates opulent groundwater resources. Place with high transverse resistivity values were observed to produce high transmissivity and are potential areas where monitoring wells can be drilled. This further explains the abundance of groundwater in most parts of the study area. However, the low values of the Dar Zarrouk variable (longitudinal conductance) are pointers to likely vulnerable location. For instance, the protective capacity of the overburden using the longitudinal conductance values which ranged between 0.000-0.019 Siemens, with overburden thickness that varies between 0.3 and 4.6 m, explain that the entire aquifer is at risk of contamination from environmental activities. Also, saline water ingress is most likely to occur at depth greater than 40 m within VES 5. This is due to the very low resistivity value (21.49  $\Omega m$ ) without the presence of clay mineral within the depth of current penetration. The results show that the Dar-Zarrouk (D-Z) parameters provide a useful and confident solution in delineating the saline and fresh water aquifers. The identified aquifer's thickness, likely contamination of site, protection capacity could help in the planning, monitoring and management of potable water supply and development in deltaic coastal aquifer system.

## References

- Song S, Zemansky G (2012) Vulnerability of groundwater systems with sea level rise in coastal aquifers, South Korea. *Environ Earth Sci* 65: 1865-1876.
- Rajsekhar K, Sharma PK, Shukla SK (2016) Numerical modeling of virus transport through unsaturated porous media. *Cogent Geosci* 2: 1-13.
- Ismail AI, El-Shamy AM (2008) Engineering behaviour of soil materials on the corrosion of mild steel. *Applied Clay Sci* 10: 1-7.
- Ekine AS, Emujakporue GO (2010) Investigation of corrosion of buried oil pipeline by the electrical geophysical methods. *J Applied Sci Environ Manag* 14: 63-65.
- Okiwelu A, Evans U, Obianwu I (2011) Geoelectrical investigation of external corrosion of earth buried pipeline in the coastal area of Gulf of Guinea. *J Am Sci* 7: 221-226.
- Evans UF, Okiwelu AA, Ude IA, Abima JO (2012) Estimation of corrosion

induced flaw sizes on buried gas pipeline in the Nigerian sector of Niger Delta. *Res J Environ Earth Sci* 4: 264-269.

- Corwin DL, Rhoades JD (1984) Measurement of inverted electrical conductivity profiles using electromagnetic induction. *Soil Sci Soc Am J* 48: 288-291.
- Maillet R (1947) Fundamental equations for electrical prospecting. *J Geophys* 12: 528-556.
- De Oliveira Braga AC, Fisho WM, Daurado JC (2006) Resistivity (DC) method applied to aquifer protection studies. *Braz J Geophys* 24: 573-581.
- Henriet JP (1975) Direct applications of the Dar Zarrouk parameters in groundwater surveys. *Geophys Prospec* 24: 344-353.
- Egbai JC, Iserhien-Emekeme RE (2015) Aquifer transmissivity Dar Zarrouk parameters and groundwater flow direction in Abudu, Edo State, Nigeria. *Int J Sci Technol* 4: 628-640.
- Okiongbo KS, Akpofure E, Odubo E (2011) Determination of aquifer protective capacity and corrosivity of near surface materials in Yenagoa City, Nigeria. *Res J Applied Sci Environ Technol* 3: 785-791.
- Evans UF, George NJ, Omotosho OO (2010) Geoelectrical measurements for design of cathodic protection system to prolong the life span of Jetty. *World J Applied Sci Technol* 2: 217-223.
- George NJ, Obianwu VI, Obot IB (2011) Estimation of groundwater reserve in unconfined frequently exploited depth of aquifer using a combined surficial geophysical and laboratory techniques in the Niger Delta, South-south, Nigeria. *Pelagia Res Lib* 2: 163-177.
- Igboekwe MU, Akankpo AO (2012) Estimation of hydrogeological parameters for Michael Okpara University of Agriculture, Umudike, Southeastern Nigeria. *Pac J Sci Technol* 13: 455-461.
- Abam TKS (1999) Dynamics and quality of water resources in the Niger Delta. Proceedings of the symposium of the International Union of Geodesy and Geophysics.
- Edet A, Abdelaziz R, Merkel B, Okereke C, Nganje T (2014) Numerical groundwater flow modeling of the coastal plain sand aquifer, Akwa Ibom State, SE Nigeria. *J Water Res Protect* 6: 193-201.
- Orellana E, Mooney HM (1966) Mastercurves for Schlumberger arrangement, Madrid.
- Emmanuel CC (2013) Monitoring the quality of groundwater and leachate contamination near waste dump in coastal plain sand aquifer.
- IPI2 Win V.2.1 users guide (2001) Computer software user guide catalog presented by Moscow State University.
- Edet AE, Okereke CS (2002) Delineation of shallow groundwater aquifers in the coastal plain sand of Calabar area using surface resistivity and hydrogeological data. *J Afr Earth Sci* 35: 433-441.
- Zoddy AAR (1974) Use of Dar Zarrouk curves in the interpretation of verticals electrical sounding data. *United States Geological Survey Bulletin* pp: 1313.
- Al-Yasi AI, Alridha NA, Shakir WM (2013) The exploitation of Dar-Zarrouk parameters to differentiate between fresh and saline groundwater aquifers of sinjar plain area. *Iraqi J Sci* 54: 358-367.
- Kelly WE, Frohlich RK (1985) Relations between aquifer electrical and hydraulic properties. *Ground Water* 23: 10-16.
- Singh UK, Das RK, Hodlur GK (2004) Significance of Dar-Zarrouk parameters in the exploration of quality affected coastal aquifer systems. *Environ Geol* 45: 696-702.
- Harb N, Haddad K, Farkh S (2010) Calculation of transverse resistance to correct aquifer resistivity of groundwater saturated zones: Implications for estimating its hydrogeological properties. *Lebanese Sci J* 11: 105-115.
- Oseji JO, Ujuanbi O (2009) Hydrogeophysical investigation of groundwater potential in Ewu Kingdom, Ndokwa Land of Delta State, Nigeria. *Int J Phys Sci* 4: 275-284.
- Word SH (1990) Resistivity and induced polarization methods USA investigations in geophysics, geotechnical and environmental geophysics. Society of Exploration Geophysics.
- Akankpo O, Igboekwe MU (2011) Monitoring groundwater contamination using surface electrical resistivity and geochemical methods. *J Water Res Protect* 3: 318-324.
- Orza RL, Panea I (2012) Estimation of the natural protective capacity of an aquifer system using surface geophysical. 74<sup>th</sup> EAGE Conference & Exhibition, Near Surface Geoscience Applications.