

Molecular Docking Studies of Phytochemicals of *Allophylus Serratus* against Cyclooxygenase-2 Enzyme

Kero Jemal*

Department of Biology, Kotebe Metropolitan University, Addis Ababa, Ethiopia

ABSTRACT

Background: *Allophylus serratus* is a medicinal plant used traditionally as anti-inflammatory agent. The main objectives of this study are to identify phytochemical compounds that have anti-inflammatory properties from the leaf extracts of *Allophylus serratus* and to search for cyclooxygenase-2 (COX-2) enzyme inhibitors through molecular docking.

Result: From the GC-MS analysis of leaf extracts of *Allophylus serratus*, ten of the phytochemical compounds which satisfy were analyzed for their drug likeliness based on Lipinski's rule of five and inhibitor property against the Cyclooxygenase (COX-2) enzyme, a protein responsible for inflammation. These phytochemical compounds were subjected to docking experiments using Auto Dock Vina. The results from molecular docking study revealed that 1H-Benzocycloheptene, 2,4a,5,6,7,8-hexahydro-3,5,5,9-tetramethyl-, (R)-, Sulfurous acid, dipentyl ester and 1,2-Benzenedicarboxylic acid, bis (2-methylpropyl) ester bind effectively to the active site region of COX-2 with a binding energy of -8.9, -8.4, and -7.9, respectively. The binding energy of the phyto-compounds was compared with the known anti-inflammatory drug Diclofenac that inhibit COX-2 enzyme.

Conclusion: It was found that the phytochemical compounds from leaf extracts of *Allophylus serratus* have strong inhibitory effect on COX-2 enzyme and as a result they have potential anti-inflammatory medicinal values. Thus the study puts forth experimental validation for traditional antidote and these phyto-compounds could be further promoted as potential lead molecule.

Keywords: Anti-inflammatory; Phyto-compounds; *Allophylus serratus*; Molecular docking; COX-2 enzyme

INTRODUCTION

Inflammation is our body's natural reaction (an important physiological reaction) to injury caused by infectious agents, burn, toxic or physical, chemical or traumatic damages [1]. It is a defense response of body characterized by pain, redness, heat, swelling, and loss of function [2]. Inflammation is an innate and adaptive immune systems normal body process that occurs as a response to microbial pathogen infection, chemical irritation and tissue injury. The purpose of inflammation is to eliminate or limit the spread of injurious agent and repairing tissue [3]. The reaction comprises systemic and local responses [4]. There are different components to an inflammatory response such as a complex array of enzyme activation, mediator release, cell migration, tissue breakdown and repair. These responses are aimed at host defense and usually activated in most disease condition.

The main mediators of inflammation and pain are proteins known as prostaglandins [5]. The key enzyme which plays crucial role in the synthesis of prostaglandins is Cyclooxygenase 2 (COX-2). Inflammatory process consists of the acute stage and chronic stage. The acute stage which occurs just after tissue damage is

characterized by increase in blood vessels permeability, release of excess fluid, proteins and short period accumulation of white blood cells [6]. In acute stage inflammation, the main mediators are histamine, serotonin, and Cyclooxygenase 2 (COX-2). If the acute inflammation is not controlled correctly the second chronic stage inflammation will occur. The chronic stage inflammation is mediated by many inflammatory mediators which include Prostaglandin E2 (PGE2), Nitric Oxide (NO) and lipoxygenases. When the inflammation reaches chronic stage, it results in diseases such as peptic ulcers, systemic lupus, rheumatoid arthritis, asthma and cancer.

In tissues with no inflammation the level of Prostaglandin E2 (PGE2) is low. But during acute inflammation response, the level of PGE2 increases in the tissues with inflammation. Further increase in the level of PGE2 occurs as immune cells come to the tissues [7]. The enzyme responsible for the biosynthesis of PGE2 which induce inflammation and inflammatory response is Cyclooxygenase 2 (COX-2) enzymes. Cyclooxygenase 2 (COX-2) stimulates biosynthesis PGE2 and increases its level in the tissue. COX-2 plays a vital role in conversion of arachidonic acid to prostaglandins [8]. The

Correspondence to: Kero Jemal, Department of Biology, Kotebe Metropolitan University, Addis Ababa, Ethiopia, Tel: +251910477458; E-mail: kerojemal@gmail.com

Received: June 25, 2021; **Accepted:** July 09, 2021; **Published:** July 16, 2021

Citation: Jemal K (2021) Molecular Docking Studies of Phytochemicals of *Allophylus serratus* against Cyclooxygenase-2 Enzyme. J Clin Toxicol. S18:005.

Copyright: © 2021 Jemal K. This is an open-access article distributed under the terms of the Creative Commons Attribution License, which permits unrestricted use, distribution, and reproduction in any medium, provided the original author and source are credited.

ligands were submitted to AutoDock vina. The binding energy and the binding contacts of each ligand were obtained and the docked complexes were analyzed using Discovery Studio 3.1 visualizer.

Ligand preparation

For the present study, from 42 phytochemical compounds or bioactive compounds identified from *Allophylus serratus* leaf extract by GC-MS analysis only ten of them were selected for the docking study. The chemical structures of all the phyto-compounds obtained from the result of GC-MS and selected for docking, were retrieved through the PubChem compound database at NCBI. The 2D structures were obtained from PubChem compound database at NCBI and the 3D structure of the ligands was drawn by using UCSF Chimera. Ligands were prepared (minimization of energy done, hydrogen atoms added and charges added where required) using UCSF Chimera structure build module. The prepared 3D structures of the compounds were saved in the PDB format and were finally optimized for docking using UCSF Chimera tools.

Retrieval of target protein

Cyclooxygenase-2 (COX-2) protein which plays a crucial role in modulation of inflammation was selected for its interaction with the phyto-constituents isolated from *Allophylus serratus* leaf extracts. The 3DX-ray crystal structure of the Cyclooxygenase-2 (COX-2) protein with details resolution was retrieved from Protein Data Bank (PDB) with PDB ID 6COX_A. The 6COX_A is a complex of COX-2 with an inhibitor SC-558.

Preparation of the target protein

The raw PDB protein structure could not be used for molecular docking studies. PDB structure consists only of heavy atoms, waters, cofactors, metal ions and can be of multimeric. These structures do not have the information about bond orders, topologies or formal atomic charges. The terminal amide groups may be misaligned because the X-ray structure analysis cannot distinguish between O and NH₂ Ionization and tautomeric states are also unassigned. So, the raw PDB structure retrieved from PDB should be prepared in a suitable manner for docking.

Before proceeding to docking analysis, the COX-2 enzyme protein was subject to refinement and energy optimization. Protein

Preparation Wizard of UCSF Chimera (Dock prep) software was used to process and prepare the protein. This Wizard allows one to properly prepare a protein for docking. This tool can convert a raw PDB structure into all-atom fully prepared protein models.

The X-ray crystal structure of 6COX_A protein was prepared by removing all the water molecules present in the structure. Since the raw data do not contain any hydrogen in it, the implicit hydrogen atoms were added to the atoms to satisfy their appropriate valences and ligands and ions of no significance present in the protein structure were deleted. Then the structure was optimized by assigning the bond orders, bond angles and topology. The formal atomic charges were fixed for the amino acid residues and energy minimization was carried out. The Discovery Studio 3.1 visualizer was used to analyze the protein structure, the hydrogen bond interactions and non-bond interactions of ligands with the active site residues and preparation of high resolution images.

Docking

After the ligands and the target protein prepared for docking, AutoDock Vina was used to perform docking process by bringing the ligand with the target protein. Individual ligand compound was given as input in the parameter meant for "ligand" and the protocol was run for each of the ligands. The various conformations for ligand in this docking procedure were generated and the final energy refinement of the ligand pose occurred. The Dock score of the best poses docked into the target protein for all the tested compounds was calculated.

RESULTS

GC-MS analysis

GC-MS analysis was performed for the methanolic and ethyl acetate leaf extracts of *Allophylus serratus* to assess their phytochemical constituents. The results of GC-MS analysis showed the identification of a number of phytochemical compounds. The compositions of the phytochemical compounds present in ethyl acetate and methanolic extracts of *Allophylus serratus* leaf extracts identified by GC-MS analysis with their Retention Time (RT), molecular formula, molecular weight and area (%) are presented (Table 1). The GC-MS chromatograms of the two extracts are also given respectively.

Table 1: Bioactive compounds identified in the methanolic extract of leaf of *Allophylus serratus* by GC-MS analysis.

S.no	Name of the compound in methanol extract	Molecular formula	Molecular weight g/mol	RT	Peak area %
1	N-(2-Allylcarbamoyl-4-chloro-phenyl)-3,4-dimethoxy-benzamide	C ₁₉ H ₁₉ ClN ₂ O ₄	374.818	54.828	26.65
2	Oleic acid	C ₁₈ H ₃₄ O ₂	282.468	34.15	14.57
3	6-Dimethylaminonaphthene-1-sulfonic acid amide, N-[5-hydroxy-n-pentyl]-	C ₁₇ H ₂₄ N ₂ O ₃ S	336.449	49.532	10.02
4	1,2,3,4-Tetrahydroisoquinoline, 6,7-dimethoxy-1-(3,4-dimethoxybenzyl)-2-nitroso-	C ₂₀ H ₂₆ ClNO ₄	379.878	52.625	4.69
5	Isopropyl Palmitate	C ₁₉ H ₃₈ O ₂	298.511	30.735	4.64
6	Sulfurous acid, dipentyl ester	C ₅ H ₁₁ O ₃ S-	151.2	20.956	4.39
7	9,12,15-Octadecatrienoic acid, (Z,Z,Z)-	C ₁₈ H ₃₀ O ₂	278.436	34.891	4.38
8	Cycloheptane, 4-methylene-1-methyl-2-(2-methyl-1-propen-1-yl)-1-vinyl-	C ₁₅ H ₂₄	204.351	15.835	2.46
9	Docosane, 11-decyl-	C ₃₂ H ₆₆	450.87	53.529	2.36
10	2,2-Dimethyl-3-(3,7,16,20-tetramethyl-heneicosa-3,7,11,15,19-pentaenyl)-oxirane	C ₃₀ H ₅₀ O	426.729	48.221	2.24
11	Spiro[5.5]undeca-1,8-diene, 1,5,5,9-tetramethyl-, (R)-	C ₁₅ H ₂₄	204.35	16.856	1.95
12	1-Hexadecanesulfonic acid, 3,5-dichloro-2,6-dimethyl-4-pyridyl ester	C ₂₃ H ₃₉ Cl ₂ NO ₃ S	480.53166	59.416	1.77

13	1H-Cyclopropa[3,4]benz[1,2-e]azulene-4a,5,7b,9,9a(1aH)-pentol, 3-[(acetyloxy methyl)-1b,4,5,7a,8,9-hexahydro-1,1,6,8-tetrameth	new	new	58.389	0.99
14	18,19-Secoyohimban-19-oic acid, 16,17-didehydro-16-(hydroxymethyl), methyl ester, (15.beta.,16Z,20.xi.)	C ₂₁ H ₂₆ N ₂ O ₃	354.443	47.359	0.99
15	1,6-Cyclodecadiene, 1-methyl-5-methylene-8-(1-methylethyl), [s(E,E)-]	C ₁₅ H ₂₄	204.351	17.486	0.97
16	Lanost-9(11)-ene-3,18,20,23-tetrol, 23-acetate, (3.beta.,20.xi.)-	C ₃₂ H ₅₄ O	518.768	60.433	0.89
17	Semicarbazide, 4-benzo[1,2,5]thiadiazol-4-yl-1-(5-nitro-furan-2-ylmethylene)-	C ₁₂ H ₈ N ₆ O ₄ S	332.294	52.275	0.84
18	1-Naphthalenol, 1,2,3,4,4a,7,8,8a-octahydro-1,6-dimethyl-4-(1-methylethyl)-, [1R-(1.alpha.,4.beta.,4a.beta.,8a.beta.)]-	C ₁₅ H ₂₆ O	222.372	18.843	0.80
19	Spiro [4.5] dec-7-ene, 1,8-dimethyl-4-(1-methylethenyl), [1S-(1.alpha.,4.beta.,5.alpha.)]	C ₁₅ H ₂₄	204.357	16.191	0.77
20	Isocaryophyllene	C ₁₅ H ₂₄	204.357	16.191	0.77
21	1,15-Pentadecanedioic acid	C ₁₅ H ₂₈ O ₄	272.385	35.265	0.76
22	Illudol	C ₁₅ H ₂₄ O ₃	252.354	18.245	0.67
23	5,9,13-Pentadecatrien-2-one, 6,10,14-trimethyl-, (E,E)-	C ₁₈ H ₃₀ O	262.437	27.531	0.61
24	2,6,10-Dodecatriene, 12-acetoxy-6-hydroxymethyl-2,10-dimethyl-, (E,E)-	C ₁₇ H ₂₈ O ₃	280.402	32.17	0.47
25	Isopropyl myristate	C ₁₇ H ₃₄ O ₂	270.457	25.492	0.46
26	Dibenzo[a,h]cyclohexadecene, 2,3,11,12-tetraethenyl-1,2,3,4,5,6,7,8,9,10,11,12,13,14,15,16,17,18-octadecahydro-, (2R*,3S*,4Z,	C ₃₀ H ₄₄	404.682	53.194	0.40
27	Hexadecane, 1,1'-oxybis-	C ₃₂ H ₆₆ O	466.8658	56.163	0.36
28	1,2-Benzenedicarboxylic acid, bis (2-methylpropyl) ester	C ₁₆ H ₂₂ O ₄	278.348	28.254	0.35
29	Phthalic acid, 6-ethyl-3-octyl pentyl ester	C ₂₈ H ₄₆ O ₄	416.365	43.144	0.35
30	1H-Benzocycloheptene, 2,4a,5,6,7,8-hexahydro-3,5,5,9-tetramethyl-, (R)-	C ₁₅ H ₂₄	204.3511	17.487	0.33
31	2-Butyl-5-methyl-3-(2-methylprop-2-enyl) cyclohexanone	C ₁₅ H ₂₆ O	222.372	21.172	0.29
32	10-Methyl-8-tetradecen-1-ol acetate	C ₁₇ H ₃₂ O ₂	268.441	25.866	0.29

GC-MS chromatogram of the methanol extract of leaves of *Allophylus serratus* clearly showed thirty two peaks indicating the presence of total thirty two compounds and other many compounds in smaller quantities. Among the identified compounds in methanolic extract, the maximum percentage (26.65%) was that of N-(2-Allylcarbamoyl-4-chloro-phenyl)-3,4-dimethoxy-benzamide followed by Oleic Acid (14.57%), 6-Dimethylaminonaphthene-1-sulfonic acid amide, N-[5-hydroxy-n-pentyl]- (10.01%), Isopropyl Palmitate (4.69%), Sulfurous acid, dipentyl ester (4.64%), 9,12,15-Octadecatrienoic acid, (Z,Z,Z)-(4.38%) (4.38%), Cycloheptane, 4-methylene-1-methyl-2-(2-methyl-1-propen-1-yl)-1-vinyl-(4.38%). The other compounds are found in small quantities as indicated. The bioactive compounds in the methanol leaf extracts identified by GC-MS with their Molecular formula, Molecular Weight (MW), Retention Time (RT), and Concentration (%) were presented.

GC-MS chromatogram of ethyl acetate extract showed twelve peaks indicating the presence of twelve major compounds (Figure 1). Among the identified compounds in ethyl acetate extract, the maximum N2-Veratroylglycine N'-(4-fluoro-*a*-methylbenzylidene) hydrazide (27.36%) followed by Sulfurous acid, 2-pentyl undecyl ester (10.63%), Diethyl Phthalate (10.10%), d-Glycero-d-tallo-heptose (9.67%), Galacto-heptulose (9.07%), 1,3-Dimethyl-5-[1,2-dicarbethoxyhydrazino]-6-hydrazinou, 1,2,3,4-Tetrahydroisoquinoline, 6,7-dimethoxy-1-(3,4-dimethoxybenzyl)-2-nitroso-(2.66%), Isopropyl racil (6.18%), Isopropyl Palmitate (3.48%), 9,12,15-Octadecatrienoic acid, (Z,Z,Z)-(3.35 stearate (2.05%), 6-O-Methyl-2,4-methylene-beta-sedoheptitol (1.88%) and 2,2-Dimethyl-3-(3,7,16,20-tetramethyl-heneicosa-3,7,11,15,19-pentaenyl)-oxirane (0.97%). The bioactive compounds in the ethyl acetate leaf extracts identified by GC-MS with their Molecular formula, Molecular Weight (MW), Retention Time (RT), and Concentration (%) were presented in Table 2.

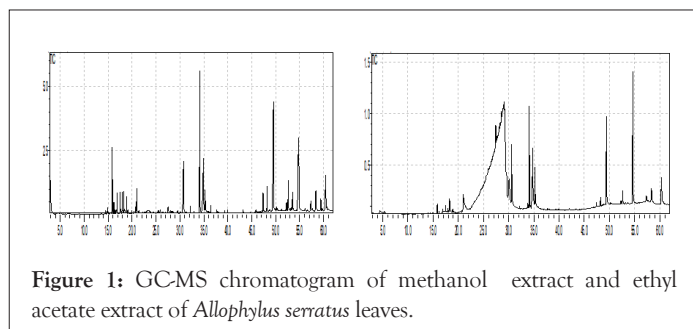


Figure 1: GC-MS chromatogram of methanol extract and ethyl acetate extract of *Allophylus serratus* leaves.

Molecular docking results

Ligand preparation: From the list of GC-MS identified chemical compounds in the methanol and ethyl acetate extracts of leaf of *Allophylus serratus* the following compounds

- Isocaryophyllene
- Sulfurous acid, dipentyl ester
- Spiro[5.5]undeca-1,8-diene, 1,5,5,9-tetramethyl-, (R)-
- Semicarbazide, 4-benzo[1,2,5]thiadiazol-4-yl-1-(5-nitro-furan-2-ylmethylene
- 1,15-Pentadecanedioic acid,
- Illudol
- 1,2-Benzenedicarboxylic acid, bis (2-methylpropyl) ester
- 1H-Benzocycloheptene, 2,4a,5,6,7,8-hexahydro-3,5,5,9-tetramethyl-, (R)-
- 2-Butyl-5-methyl-3-(2-methylprop-2-enyl) cyclohexanone
- Diethyl Phthalate were selected and subjected to docking experiments (Table 3).

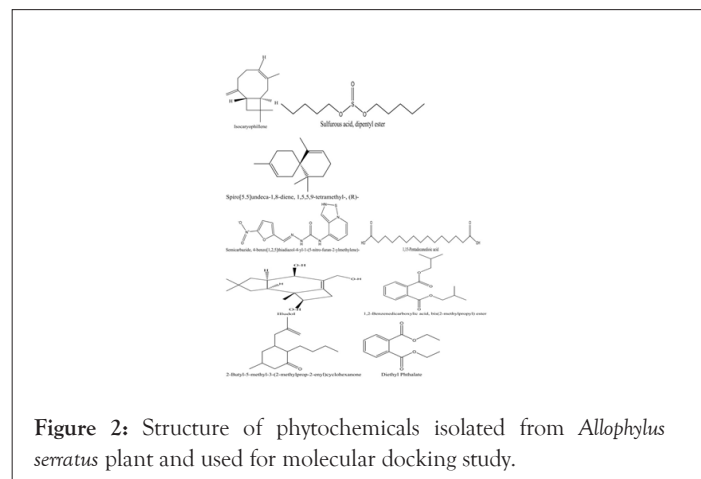
Table 2: Bioactive compounds identified in the ethyl acetate extract of leaf of *Allophylus serratus* by GC-MS analysis.

S. No	Name of the compound in ethyl acetate extract	S. No	Molecular weight g/mol	RT	Peak area %
1	N2-Veratroylglycine N'(4-fluoro-a-methylbenzylidene) hydrazide	C ₁₉ H ₂₀ FN ₃ O ₄	373.378	54.64	27.36
2	Sulfurous acid, 2-pentyl undecyl ester	C ₁₆ H ₃₄ O ₃ S	306.505	34.088	10.64
3	Diethyl Phthalate	C ₁₂ H ₁₄ O ₄	222.24	20.962	10.10
4	d-Glycero-d-tallo-heptose	C ₇ H ₁₄ O ₇	210.182	29.175	9.67
5	Galacto-heptulose	C ₇ H ₁₄ O ₇	210.182	30.092	9.08
6	1,3-Dimethyl-5-[1,2-dicarbethoxyhydrazino]-6-hydrazinouracil	C ₁₂ H ₂₀ N ₆ O ₆	344.324	49.395	6.18
7	Isopropyl Palmirate	C ₁₉ H ₃₈ O ₂	298.511	30.598	3.49
8	9,12,15-Octadecatrienoic acid, (Z,Z,Z)-	C ₁₈ H ₃₀ O ₂	278.430	34.781	3.36
9	1,2,3,4-Tetrahydroisoquinoline, 6,7-dimethoxy-1-(3,4-dimethoxybenzyl)-2-nitroso-	C ₂₀ H ₂₄ N ₂ O ₅	372.415	52.608	2.66
10	Isopropyl stearate	C ₂₁ H ₄₂ O ₂	326.565	35.223	2.06
11	6-O-Methyl-2,4-methylene-beta.-sedoheptitol	C ₉ H ₁₈ O ₇	238.235	28.691	1.88
12	2,2-Dimethyl-3-(3,7,16,20-tetramethylheneicosa-3,7,11,15,19-pentaenyl)-oxirane	C ₂₉ H ₄₈ O	412.691	48.222	0.98

Table 3: Lipinski's property of the selected phytochemical compounds from leaf extracts of *Allophylus serratus*.

S. No	Compound name	Molecular weight (<500KD)	Log P (<5)	H-bond donor (<5)	H-bond acceptor (<10)
1	Isocaryophyllene	204.36	4.4	0	0
2	Sulfurous acid, dipentyl ester	151.20	1.1	0	4
3	Spiro[5.5]undeca-1,8-diene, 1,5,5,9-tetramethyl-, (R)-	204.35	4.4	0	0
4	Semicarbazide, 4-benzo[1,2,5]thiadiazol-4-yl-1-(5-nitro-furan-2-ylmethylene)-	332.29	2	2	8

Diclofenac was used as standard control in the docking experiment. The 2D structure of and phytochemical properties of phytochemical compounds identified by GC-MS analysis in the leaf extracts of *Allophylus serratus* were downloaded from PubChem database (Figure 2). All the compounds were prepared for docking using the UCSF Chimera software version 1.11.2. During preparation of the ligand, 3D conformations were generated using UCSF hydrogen atoms were added and Gasteiger charges were added. The energy minimization was done running a 1000 cycles by steepest descent approximation and was converged to a gradient of 0.02 using the tool UCSF Chimera 1.11.2., and the AMBERff99SB Force field was used for this procedure. The ligands were saved as mol2 document and input ligand file format was mol2 for all docking programs investigated.



For these selected phytochemical compounds, Lipinski's rule of five parameters such as molecular weight, log P, and number of hydrogen bond donors and number of hydrogen bond acceptors were taken from the PubChem database. From the compounds identified by GC-MS analysis, only those which obey Lipinski's rule of five are alone subjected to docking experiment. Only compounds which fulfill Lipinski's rule of five were used for molecular docking experiment. The structures of compounds from *Allophylus serratus* leaf extracts are shown.

Preparation of the protein

The target protein, which is cyclooxygenase-2 (Prostaglandin Synthase-2), three-dimensional (3D) structure was downloaded from the Protein Data Bank (PDB) database. The PDB database is a repository for the 3D structural data of large biological macromolecules such as proteins and nucleic acids. The PDB ID of COX-2 enzyme is 6COX-A, which is a complex of COX-2 enzyme with selective inhibitor compound SC-558. The active site region of the COX-2 enzyme where the inhibitor compound binds is given in Figures 3a and 3b. This protein is a monotopic membrane protein which has two chains and 587 amino acids length. The ligands bound to this protein were HEM, NAG and S58 each having two chains.

The protein 6COX_A was loaded into the Dock prep module of the UCSF Chimera software. Chain A of the protein was selected for preparation and docking. The active site of the protein is the binding pocket where reference ligand SC-558 is bound in this particular chain. Before docking, the protein crystal structures were

cleaned by removing the hetero atoms such as, water molecules, unnecessary ligands and ions. Hydrogen atoms were added to correct ionization and tautomeric status of the amino acids and charges were added where required using Dock prep tool in the Chimera software. The docking process was performed using AutoDock Vina. Docking parameters were set following Autodock vina software procedures. The PDB coordinates of the protein and the ligand were submitted to AutoDock Vina. The binding energy and the binding contacts of each ligand were obtained. Analysis of the docked complexes was done using Discovery Studio 3.1 visualizer.

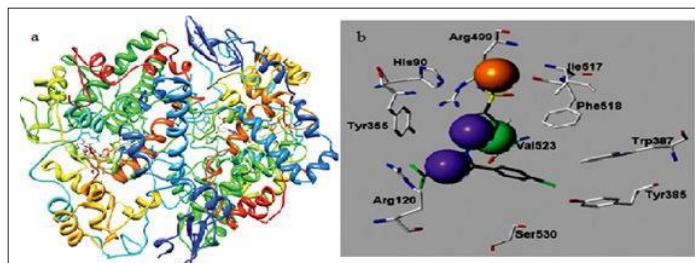


Figure 3: (a) Cyclooxygenase-2 (COX-2) (Prostaglandin Synthase-2) in complex with a COX-2 selective inhibitor SC-558 in I222 space group, (b) Cyclooxygenase-2 (COX-2) enzyme in complex with selective inhibitor SC-558 showing the active site region of COX-2 enzyme.

Docking

The biological activity of *Allophylus serratus* compounds against the COX-2 were evaluated using the 3D structure of the receptor retrieved from protein data bank site of COX-2 enzyme (PDB code: 6COX_A). For the selected compounds and protein the docked binding mode was established to link the docking score function.

The binding pattern analysis between COX-2 protein and ligands suggested that the binding pattern varied with the ligand nature. The docking results of the Diclofenac and bioactive compounds from *Allophylus serratus* are given in Figures 4a-4k. The binding energy for the chosen phytochemical compound with the cyclooxygenase (COX-2) enzyme using Auto Dock vina. Docking studies show that the ligands bind to the active site region of COX-2 enzyme with good binding energy in the same hydrophobic pocket to that of Diclofenac control.

The docking results were represented in the form of e-negative values. In the docking studies, higher negative e-values represent high binding affinity between the receptor and ligand molecules, indicating the higher efficiency of the bioactive compounds.

The results of the interactions of ligands (*Allophylus serratus* leaf extract compounds) with the Cyclooxygenase-2 (COX-2) receptor are summarized. The docked ligands show scores ranging from ≈ 6.3 to ≈ 8.9 . The docking score of Diclofenac (control) against COX-2 was found to be -7.7 kcal/mol with two hydrogen bonds (Table 4).

Auto dock is a docking program used for virtual screening and predicting protein-ligand binding modes. It is an automated procedure for predicting the interactions of ligands with target protein. The molecular docking score of the secondary metabolites of leaf extract of *Allophylus serratus*. Out of the 44 compounds found in GC-MS analysis of methanolic and ethyl acetate leaf extracts, only 10 compounds that fulfill Lipinisks rule of five were docked with COX-2.

Out of the 10 components, 1H-Benzocycloheptene, 2,4a,5,6,7,8-hexahydro-3,5,5,9-tetramethyl-, (R)-has highest docking score (-8.9

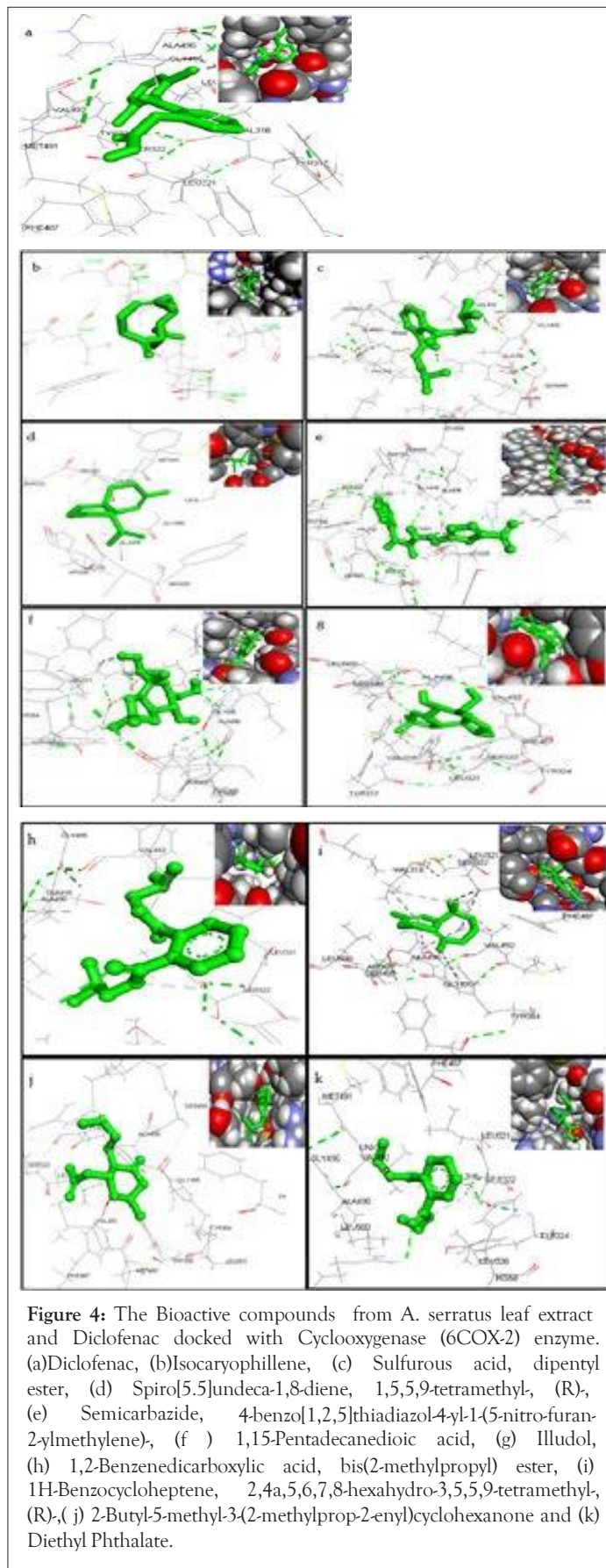


Figure 4: The Bioactive compounds from *A. serratus* leaf extract and Diclofenac docked with Cyclooxygenase (6COX-2) enzyme. (a) Diclofenac, (b) Isocaryophyllene, (c) Sulfurous acid, dipentyl ester, (d) Spiro[5.5]undeca-1,8-diene, 1,5,5,9-tetramethyl-, (R)-, (e) Semicarbazide, 4-benzo[1,2,5]thiadiazol-4-yl-1-(5-nitro-furan-2-ylmethylene)-, (f) 1,15-Pentadecanedioic acid, (g) Illudol, (h) 1,2-Benzenedicarboxylic acid, bis(2-methylpropyl) ester, (i) 1H-Benzocycloheptene, 2,4a,5,6,7,8-hexahydro-3,5,5,9-tetramethyl-, (R)-, (j) 2-Butyl-5-methyl-3-(2-methylprop-2-enyl)cyclohexanone and (k) Diethyl Phthalate.

kcal/mol) but with no hydrogen bonds. The result showed that other intermolecular interactions were predominantly involved in the interaction of the receptor protein and the ligand molecule. The second highest docking score with binding energy -8.4 kcal/mol without making any H-bond was obtained by Sulfurous acid,

Table 4: Molecular docking score for secondary metabolites of *A. serratus* with COX-2.

S. No	Ligand	Docking score (kcal/mol)	No. of hydrogen bonds formed
1	Isocaryophyllene	-6.5	0
2	Sulfurous acid, dipentyl ester	-8.4	0
3	Spiro[5.5]undeca-1,8-diene, 1,5,5,9-tetramethyl, (R)-	-7.1	0
4	Semicarbazide, 4-benzo[1,2,5]thiadiazol-4-yl-1-(5-nitro-furan-2-ylmethylene)-	-7.4	2
5	1,15-Pentadecanedioic acid	-7.2	2
6	Illudol	-7.1	0
7	1,2-Benzenedicarboxylic acid, bis(2-methylpropyl) ester	-7.9	0
8	1H-Benzocycloheptene, 2,4a,5,6,7,8-hexahydro-3,5,5,9-tetramethyl, (R)-	-8.9	0
9	2-Butyl-5-methyl-3-(2-methylprop-2-enyl)cyclohexanone	-7.7	1
10	Diethyl phthalate	-6.7	0
11	Declofenac sodium	-7.7	2

dipentyl ester with COX-2 followed by 1,2-Benzenedicarboxylic acid, bis (2-methylpropyl) ester which show the docking score binding energy of -7.7 kcal/mol. On the other hand 1, 15-Pentadecanedioic acid and the control Declofenac formed the maximum number of hydrogen bonds (2 Hydrogen bonds each) with the target protein. The least docking score binding energy of -6.3 was formed by Isocaryophyllene with COX-2.

The docking models of the selected compounds

- Isocaryophyllene
- Sulfurous acid, dipentyl ester
- Spiro[5.5]undeca-1,8-diene, 1,5,5,9-tetramethyl, (R)-
- Semicarbazide, 4-benzo[1,2,5]thiadiazol-4-yl-1-(5-nitro-furan-2-ylmethylene)
- 1,15-Pentadecanedioic acid,
- Illudol
- 1,2-Benzenedicarboxylic acid, bis(2-methylpropyl) ester
- 1H-Benzocycloheptene, 2,4a,5,6,7,8-hexahydro-3,5,5,9-tetramethyl, (R)-
- 2-Butyl-5-methyl-3-(2-methylprop-2-enyl)cyclohexanone
- Diethyl Phthalate

The results showed that all the bioactive compounds with target antigens produced high negative e-value. Thus, it is clear that the bioactive compounds were able to interact with any of the available binding sites of the COX-2 effectively. The above study clearly indicates that the bioactive compounds of *Allophylus serratus* were able to inhibit the activity of the COX-2 enzymes.

DISCUSSION

The quantitative GC/MS phytochemical analysis of methanolic extract of *Allophylus serratus* leaf showed totally 32 compounds and that of ethyl acetate extract of *Allophylus serratus* leaf showed totally 12 compounds. These phytochemical compounds belong to various groups such as alkaloids, flavonoids, glycosides, saponins, tannins, phenol and terpenes. Flavonoids are phytochemical compounds which have antioxidant activity and are effective superoxide anions scavengers. Alkaloids have antifungal properties because they have the ability to intercalate with DNA.

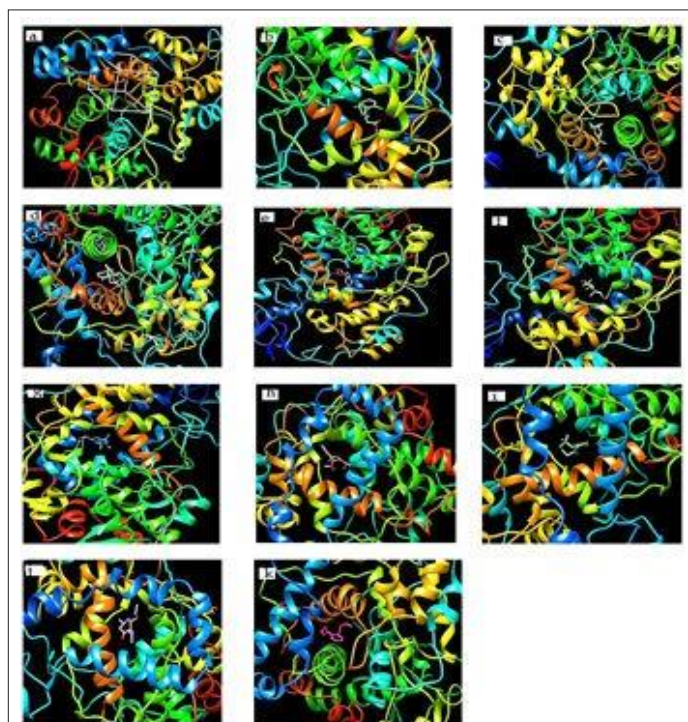


Figure 5: Binding modes of ten bioactive compounds from *Allophylus serratus*. (a) 6COX protein with active site (b) Isocaryophyllene (c) Sulfurous acid, dipentyl ester (d) Spiro[5.5]undeca-1,8-diene, 1,5,5,9-tetramethyl, (R)- (e) Semicarbazide, 4-benzo[1,2,5]thiadiazol-4-yl-1-(5-nitro-furan-2-ylmethylene) (f) 1,15-Pentadecanedioic acid, (g) Illudol, (h) 1,2-Benzenedicarboxylic acid, bis(2-methylpropyl) ester, (i) 1H-Benzocycloheptene, 2,4a,5,6,7,8-hexahydro-3,5,5,9-tetramethyl, (R)- (j) 2-Butyl-5-methyl-3-(2-methylprop-2-enyl)cyclohexanone and (k) Diethyl Phthalate docked onto 6COX protein.

In order to understand the process of inflammation, it is important to understand the role of different chemical mediators that direct the inflammatory response [17]. Chemical mediators bind to specific receptors on target cells and can increase vascular permeability and neutrophil chemotaxis, stimulate smooth muscle contraction, have direct enzymatic activity, induce pain, or mediate oxidative damage [18]. Molecular docking is one of the most powerful techniques to

discover novel ligands for proteins of known structure and thus plays a key role in structure-based drug design. The in vitro analysis of anti-inflammatory activity of *Allophylus serratus* showed good results [19]. The present study may act as supportive evidence that verify the anti-inflammatory properties of the *Allophylus serratus*, which may be because of the ability of phyto-constituents identified from this plant to inhibit various inflammatory mediators such as Cyclooxygenase-2.

Advances in computational techniques played important role in drug discovery process. To reduce the cost and time of drug discovery, virtual screening methods are routinely and extensively used. Virtual screening utilizes docking and scoring of each compound from a dataset and predicts the binding modes and affinities of ligand and receptor [20,21]. Molecular docking has helped important proceedings to drug discovery for long time. Docking techniques help to recognize correct poses of ligands in the binding pocket of a protein and to predict the affinity between the ligand and the protein. At the end, docking describes a procedure by which two molecules fit together in three-dimensional space [22,23].

CONCLUSION

In this study, for the first time, phytochemical compounds from *Allophylus serratus* were docked with Cyclooxygenase-2 enzyme to see whether these compounds can bind to the active site of the enzyme and inhibit its activity so that confirm the anti-inflammatory activity of the plant. The results of the docking study showed that all the tested phytochemical compounds (10 compounds) can bind to the receptor COX-2 similar to the control Diclofenac. This result clearly demonstrates that the molecular docking approach used was successful in finding novel COX-2 inhibitors from *Allophylus serratus* extracts.

In our present study, by means of AutoDock Vina, we docked 10 compounds from *Allophylus serratus* with active site of COX-2 enzyme and 1H-Benzocycloheptene, 2,4a,5,6,7,8-hexahydro-3,5,5,9-tetramethyl-, (R)-was found to provide most significant binding score without hydrogen bond when compare to other compounds. Other compounds also showed significant binding score compared to the control Diclofenac. Moreover, the data obtained from docking is in agreement with previously reported data on synthetic compounds where amino acid residues associated with A chain of COX-2 protein were involved for protein-ligand complementarily activity.

REFERENCES

- Battu GR, Ethadi SR, Veda PG, Swathi PK, Chandrika K, Rao VA, et al. Evaluation of antioxidant and anti-inflammatory activity of *Euphorbia heyneana* Spreng. *Asian Pac J Trop Biomed*. 2011;1(2):S191-4.
- Chopade AR, Mulla WA. Novel strategies for the treatment of inflammatory hyperalgesia. *Eur J Clin Pharmacol*. 2010;66(5):429-44.
- Devi AG, Shyma, TB, Raghavendra MP. Plants used by the tribes for the treatment of digestive system disorders in Wayanad district, Kerala. *J Appl Pharm Sci*. 2013;3(8):171-175.
- Dharmani P, Mishra PK, Maurya R, Singh Chauhan V, Palit G. *Allophylus serratus*: a plant with potential anti-ulcerogenic activity. *J Ethnopharmacol*. 2005;99(3):361-6.
- França TC, Guimarães AP, Cortopassi WA, Oliveira AA, Ramalho TC. Applications of docking and molecular dynamic studies on the search for new drugs against the biological warfare agents *Bacillus anthracis* and *Yersinia pestis*. *Curr Comput Aided Drug Des*. 2013;9(4):507-17.
- Gupta A. K, Tandon N. Reviews on Indian Medicinal Plants. *Indian Council Med Res*. 2004;2:90-92.
- Wilson AW, Medhurst SJ, Dixon CI, Bontoft NC, Winyard LA, Brackenborough KT et al. An animal model of chronic inflammatory pain: Pharmacological and temporal differentiation from acute models. *Eur J Pain*. 2006;10(6): 537-549.
- Jemal K, Sandeep BV, Pola S. In vitro anti-inflammatory and anti-microbial properties of *Allophylus serratus* leaf extracts. *Int J Adv Res*. 2017;5(3):71-80.
- Kitchen DB, Decornez H, Furr JR, Bajorath J. Docking and scoring in virtual screening for drug discovery: methods and applications. *Nature Reviews Drug Discovery*. 2004;3(11):935-49.
- Krishna PS, Vani K, Prasad MR, Samatha B, Bindu NS, Charya MA, et al. Molecular docking analysis of prodigiosin and cycloprodigiosin as COX-2 inhibitors. *Springerplus*. 2013;2(1):172.
- Lengauer T, Rarey M. Computational methods for biomolecular docking. *Curr Opin Struct Biol*. 1996;6(3):402-6.
- Saleem TK, Azeem AK, Dilip C, Sankar C, Prasanth NV, Duraisami R. Anti-inflammatory activity of the leaf extracts of *Gendarussa vulgaris* Nees. *Asian Pac J Trop Biomed*. 2011;1(2):147-9.
- Nathan C. Points of control in inflammation. *Nature*. 2002;420(6917):846-52.
- Ricciotti E, FitzGerald GA. Prostaglandins and Inflammation. *Arterioscler Thromb Vasc Biol*; 2011;31(5):986-1000.
- Riedel R, Marrassini C, Anesini C, Gorzalczy S. Anti-inflammatory and antinociceptive activity of *Urera aurantiaca*. *Phytother Res*. 2015;29(1):59-66.
- SanmugaPriya E, Senthamil Selvan P, Tamilselvan R. Phytochemical Investigation of *Allophylus serratus* Kurz Leaves by UV and GC-MS Analysis. *Res J Phytochem*. 2012;6(1): 17-24.
- Tilley SL, Coffman TM, Koller BH. Mixed messages: modulation of inflammation and immune responses by prostaglandins and thromboxanes. *J Clin Invest*. 2001;108(1):15-23.
- Traversa G, Walker AM, Ippolito FM, Caffari B, Capurso L, Dezi A, et al. Gastrointestinal toxicity of different nonsteroidal anti-inflammatory drugs. *Epidemiology*. 1995;6(1):49-54.
- Umashanker M, Shruti S. Traditional Indian herbal medicine used as antipyretic, antiulcer, antidiabetic and anticancer: a review. *Int J Res Pharm Chem*. 2011;1(4):1152-1159.
- Vane J, Botting R. Inflammation and the mechanism of action of anti-inflammatory drugs. *FASEB J*. 1987;1(2):89-96.
- Warden SJ. Prophylactic use of NSAIDs by athletes: a risk/benefit assessment. *Phys Sportsmed*. 2010 Apr;38(1):132-8.
- Watson DJ, Harper SE, Zhao PL, Quan H, Bolognese JA, Simon TJ. Gastrointestinal tolerability of the selective cyclooxygenase-2 (COX-2) inhibitor rofecoxib compared with nonselective COX-1 and COX-2 inhibitors in osteoarthritis. *Arch Intern Med*. 2000;160(19):2998-3003.
- Westlund KN. The dorsal horn and hyperalgesia. *Handb Clin Neurol*. 2006;81:103-25.