

An *In vitro* Model for the Study of HIV Infection of Thymocytes

Charlene D. Young^{1,2} and Jonathan B Angel^{1,2,3*}

¹Ottawa Hospital Research Institute, 501 Smyth Road, Ottawa, Canada

²Department of Biochemistry, Microbiology and Immunology, University of Ottawa, Ottawa, Canada

³Division of Infectious Diseases, Ottawa Hospital-General Campus, Ottawa, Canada

Abstract

The study of human thymocytes requires an appropriate matrix to enable the proper function of thymocytes. Although OP9-DL1 cells have been well established as an ideal co-culture system for the generation of T-cells from their progenitors; their ability to support a mixed population of mature human thymocytes for *in vitro* HIV infection studies has yet to be established. We assessed the effects of co-culturing a heterogeneous population of mature human thymocytes with a mouse derived cell line (OP9) transduced with the notch ligand delta like 1 (OP9-DL-1) and compared this to standard co-culture with human thymic epithelial cells (TEC). Co-culturing thymocytes with OP9-DL1 cells resulted in higher viability and lower apoptosis when compared to TEC co-cultures. The subset distribution and CD127 expression of thymocytes varied slightly between conditions. Thymocytes co-cultured with OP9-DL1 cells had a lower proportion of CD3⁺DP cells and higher proportion of SP4 cells compared to TEC co-cultures. The mature CD3⁺CD4⁺CD8⁻ (SP4) cells also had lower levels of CD127 expression in OP9-DL1 cultures when compared to TEC. Interleukin-7 stimulation of thymocytes resulted in a decrease in CD127 expression in OP9-DL1 co-cultures, as previously observed with TEC co-cultures. Thymocytes co-cultured with OP9-DL1 tended to have higher levels of IL-7 induced STAT-5 phosphorylation and had higher levels of Interleukin-7 induced Bcl-2 expression. OP9-DL1 cells provide a microenvironment which is permissive to HIV infection in thymocytes *in vitro*. Co-culturing thymocytes with OP9-DL1 will facilitate the study of human thymocytes and aid in the study of exogenous stimuli or infection on individual thymocyte subsets.

Keywords: HIV; CD127; IL-7; OP9-DL1; Thymic epithelial cells; Thymocytes

Abbreviations: Bcl-2: B cell Lymphoma 2; DL-1: Delta Like 1; DP: Double Positive; ECD: Phycoerythrin-Texas Red; FITC: Fluorescein Isothiocyanate; FTOC: Fetal Thymic Organ Culture; HIV: Human Immunodeficiency Virus; HSC: Hemopoietic Stem Cells; ISP4+: Immature Single Positive CD4; PC5: PE-cyanin 5; PE: Phycoerythrin; PI: Propidium Iodide; SCF: Stem Cell Factor; SP: Single Positive; STAT: Signal Transducer and Activator of Transcription; TEC: Thymic Epithelial Cells; TN: Triple Negative

Introduction

The immune system is a highly specialized system that relies on the interplay of a large network of factors such as lymphoid organs, cells and molecular messengers (eg. chemokines and cytokines). Disrupting just one factor can result in altered immune regulation leading to immunodeficiency, autoimmunity or impaired T-cell development.

The thymus is a target organ of HIV-1 infection. Examination of the thymus of HIV+ pediatric patients reveals a loss of lymphoid cells, disruption of the cortico-medullary boundary and a general destruction of thymic architecture which may contribute to impaired immune regulation and altered immune reconstitution in HIV disease [1,2]. The exact mechanisms of HIV-1-induced thymic dysfunction have yet to be fully elucidated. Targets of HIV-1 within the thymus are primarily CD4-expressing thymocytes, however other cells such as macrophages, dendritic cells, and epithelial cells can also be infected [2-5]. Reduced thymic output following HIV-1 infection can be due to increased cell death of infected thymocytes or a decrease in immature thymocyte proliferation following HIV-1 infection [6,7]. Thymic function may also be disrupted at the positive/negative selection stages in development possibly due to altered responses to cytokine signals.

Thymocyte development strongly relies on the thymic environment. The architecture of the thymus is such that thymocytes receive different

signals from the thymic stroma as they migrate through the thymus. The stroma delivers environmental cues which T-cells require in order to survive, proliferate and differentiate [8]. Interaction of T-cells with thymic epithelial cells (TEC) results in the release of a multitude of soluble factors such as interleukin-1 (IL-1), IL-6 and IL-7 which are required in T-cell development [9-12]. Due to such requirements, the study of thymocyte function *in vitro* has been highly dependent on the use of complex culture systems.

Evidence for the direct infection of thymocytes with HIV-1 has been provided with the use of fetal thymic organ cultures (FTOC), and in thymocyte/TEC suspension cultures. Thymocytes in these cultures are able to support high levels of HIV replication [13-16]. The ability of HIV to infect thymocytes *in vitro* was dependant on direct contact between thymocytes and TEC [4]. Although the FTOC has been proven to be an excellent system for the study of thymocytes, [17-19] the limitation of this system is the technical difficulties of establishing organ cultures, the requirement for mouse lobes although the source of thymocytes is human, as well as the high cost and manipulation associated with animal studies. The *in vitro* co-culture system of dispersed thymocytes and TEC requires the primary isolation of TEC which requires several days to achieve. The optimal *in vitro* co-culture system for the study of HIV infection of thymocytes would be a cell

***Corresponding author:** Jonathan B. Angel, Division of Infectious Diseases, Ottawa Hospital-General Campus, 501 Smyth Rd, Room G-12, Ottawa, Ontario, K1H 8L6, Canada, Tel: (613) 737-8442; Fax: (613) 737-8164; E-mail: jangel@ohri.ca

Received June 04, 2012; Accepted July 07, 2012; Published July 14, 2012

Citation: Young CD, Angel JB (2012) An *In vitro* Model for the Study of HIV Infection of Thymocytes. J Clin Cell Immunol S7:002. doi:10.4172/2155-9899.S7-002

Copyright: © 2012 Young CD, et al. This is an open-access article distributed under the terms of the Creative Commons Attribution License, which permits unrestricted use, distribution, and reproduction in any medium, provided the original author and source are credited.

line that could provide similar signals to thymocytes than direct TEC contact resulting in infection.

A cell suspension model, developed by Zuniga-Pflücker, involving the OP9-DL1 culture system has been shown to allow the development of hemopoietic stem cells (HSC) into mature T-cells [20]. OP9 are a murine bone marrow derived stromal cell line, which expresses the notch ligand Delta like 1 (DL1). The advantage of this system is its simplicity and versatility. Although the system is based on a mouse cell line, the use of this co-culture system has been adapted to human cells and has been successful in supporting the development of human T-cells [21,22].

The OP9-DL1 cell has been developed to serve as a matrix for the study of thymocyte development, but its potential uses beyond this have not been evaluated. TEC/thymocyte interactions result in the release of soluble factors which in turn activate the thymocytes allowing for productive infection with HIV [4]. Determining if OP9-DL1 cultures can provide the appropriate survival and activation signals in order to study the effect of exogenous stimuli on mature thymocytes beyond the positive and negative stage of selection has yet to be evaluated. Here we compare co-culture systems of human thymocytes with either human TEC or OP9-DL-1 cells in order to determine if OP9-DL1 can serve as a matrix to support human thymocytes for the study of HIV infection on specific thymic subsets.

Materials and Methods

Thymocyte isolation

Thymic tissue was obtained during elective cardiac surgery at the Children's Hospital of Eastern Ontario (CHEO) with informed consent obtained prior to surgery. Thymocytes were isolated as previously described [23]. Briefly thymic tissue was cut into 1-3 mm³ pieces with a scalpel and dispersed with the plunger of a 60 mm syringe prior to being separated on a Ficoll-Paque™ PLUS (Amersham Pharmacia, Piscataway, NJ) density gradient. The isolated cells were resuspended in McCoy's 5A selective media (Invitrogen, Burlington, ON) supplemented with 2 mM glutamine, 100 µg/ml penicillin, 100 µg/ml streptomycin (Sigma-Aldrich Inc, Oakville Ont, Canada) and 10% fetal calf serum (FCS) (Cansera, Rexdale, Ont, Canada). Cell purity was assessed by flow cytometry. Freshly isolated thymocytes were stored at 4°C for 4-10 days as required prior to use as previously described [23].

Thymic epithelial cell isolation

TEC were isolated as previously described [23]. Briefly, the dispersed thymic tissue was digested in DNase/collagenase (Invitrogen, Burlington, Ont) (1500 units/ml) for 90 minutes at 37°C. The resulting fragments were then washed and plated with 7 ml of serum free media, D-MEM/F12 selective media supplemented with 100 v/ml penicillin, 100 µg/ml streptomycin, 20 vg/ml epidermal growth factor, 10⁻⁹ M cholera toxin, insulin 3 vg/ml and transferin 10 µg/ml (all from Sigma-Aldrich, Oakville, Ont.). After 24-hour incubation media was replaced and cells were fed every 3-4 days in serum free media.

OP9-DL1 cells

OP9-DL1 cells were provided by Dr. Zuniga-Pflücker [20]. Cells were maintained in MEM-α (Invitrogen, Burlington, Ont, Canada) with 20% FCS and passaged every 3-4 days by trypsinization.

Thymocyte phenotype

The following fluorochrome labelled monoclonal antibodies were

used CD3-ECD (clone UCHT1), CD4-FITC (clone 13B8.2), CD8-PC5 (clone B9.11), and CD127-PE (clone R34.34) (all from Beckman-Coulter, Mississauga, Ont, Canada). The distribution of the following developmental stages of T-cell maturation were evaluated following 96 hours of co-culture: (TN) CD3⁺CD4⁺CD8⁻; (immature single positive CD4 ISP4⁺) CD3⁺CD4⁺CD8⁻; (DP) CD3⁺CD4⁺CD8⁺ and (SP) CD4⁺ or CD8⁺ cells. The expression of CD127-PE (Beckman-Coulter, Mississauga, Ont, Canada) was measured on the various subsets at the onset of culture and overtime with stimulation with IL-7.

Thymocyte cultures

Thymocytes were either cultured alone or co-cultured with TEC or OP9-DL1 cells. Briefly 2x10⁶ thymocytes/ 8 x10⁴ TEC or OP9-DL1 were cultured in 2 ml of McCoy's 5A selective media supplemented with 2 mM glutamine, 100 v/ml penicillin, 100 and µg/ml streptomycin and 10% FCS in a 12 well plate for 24-96 hours at 37°C. For stimulation experiments thymocyte cultures were stimulated with IL-7 0-5000 πg/ml (R & D, Minneapolis, MN, 387 USA).

Apoptosis

Apoptosis was measured by annexin V/Propidium Iodide (PI) staining using a commercial kit from Molecular Probes, Invitrogen according to manufacturer protocol. Briefly bulk thymocytes were co-cultured for 96 hours with either OP9-DL1 or TEC. Subsequently 1x10⁵ thymocytes were resuspended in annexin V binding buffer and stained with annexin V and PI in the dark at room temperature for 15 minutes. The cells were then diluted with 400 µl of binding buffer prior to analysis by flow cytometry.

IL-7 induced Intracellular pSTAT-5

To assess the effect of co-culture on the ability of thymocytes to respond to IL-7, STAT-5 phosphorylation in response to IL-7 was measured as previously described [24]. IL-7 induced STAT-5 phosphorylation was measured by stimulating thymocytes with IL-7 (R & D, Minneapolis, MN, 387 USA) at 1 vg/ml for 15 minutes at 37°C and 5% CO₂. The cells were prepared for intracellular staining by Caltag "fix and Perm" (Invitrogen, Burlington, Ont, Canada) reagents according to the manufacturer's protocol. Briefly the cells were fixed with reagent A for 15 minutes followed by 10 minute incubation in ice cold methanol in order to optimize the FITC signal prior to permeabilization with reagent B for 20 minutes and staining with pSTAT-5-FITC (Alexa Fluor 488 mouse antihuman STAT5 pY694, BD Biosciences, San Jose, CA, USA). All flow cytometry was conducted on a Epics Coulter Altra.

IL-7 induced Bcl-2 expression

To determine the effect of co-culture on thymocyte function, we measured Bcl-2 expression following IL-7 stimulus as previously described [24]. Briefly 1x10⁵ thymocytes were stimulated with IL-7 1 vg/ml for 48 hours at 37°C and 5% CO₂ in the presence of either TEC or OP9-DL1 cells. The cells were prepared for intracellular staining by Caltag "fix and Perm" reagents following the manufacturer's protocol. Briefly the cells were fixed with reagent A for 15 minutes, washed and resuspended in permeabilization reagent B for 20 minutes. The cells were stained with Bcl-2-FITC (BD Biosciences, San Jose, CA, USA).

IL-7-induced glucose uptake

IL-7-induced glucose uptake was measured following the modified procedures of Swainson et al. [25]. Briefly Thymocytes were either cultured alone or co-cultured with TEC or OP9-DL1 cells. Thymocytes (2x10⁶) with TEC (8x10⁴) or OP9-DL1 (8x10⁴) were cultured with

medium or IL-7 (10 ng/ml) for 96 hours at 37°C and 5% CO₂. Thymocytes (1x10⁵) were then washed and resuspended in 100 µl of Krebs/ringer buffer and incubated at 37°C for 30 minutes. Thymocytes were incubated with 2 µCi of ³H-D-glucose (GE Healthcare, Piscataway, NJ) for 45 minutes at 37°C. Glucose uptake was terminated by the addition of ice cold Krebs/ringer buffer and washed 3 times to remove any residual glucose. The cells were solubilised in 0.1% SDS and radioactivity was measured by liquid scintillation counting on a Wallac MicroBeta TriLux (Perkin Elmer, Waltham, MA).

***In vitro* HIV-1 infection of thymocytes**

Thymocytes were infected *in vitro* with a clinical isolate HIV_{cs204} following previously described methods [26]. Briefly, prior to infection, thymocytes were resuspended to a concentration of 2x10⁶ cells/ml in McCoys 5A media with polybrene (Sigma-Aldrich) (3 µg/ml) for 1 hour at 37°C. Thymocytes (6x10⁶) were then washed twice with PBS and the pellet was infected with cell-free HIV-1_{cs204} supernatants at a multiplicity of infection (M.O.I) of 0.01 for 2 hours at 37°C with shaking every 30 minutes or mock-infected with equivalent volumes of PBMC culture supernatants. Thymocytes were then washed twice in PBS and resuspended in McCoys 5A complete medium (Invitrogen).

PCR for the detection of HIV-1 in thymocytes

To confirm HIV infection of thymocytes, genomic DNA was isolated from infected thymocytes as early as 24 hours post infection (p.i.). Viral DNA was detectable by nested PCR targeting the gag region of HIV. Briefly, genomic DNA was isolated from infected thymocytes using the QIAGEN DNeasy blood and tissue kit (Qiagen, Mississauga, ON). In the first round of PCR, DNA (1/10) was amplified with outer P24 primers (400 nm) fwd: 5'-ATAGAGGAAGAGCAAAAACAAA-3'; rvs: 5'-GTTCTGAAGGGTACTAGTAGT-3'. The second round PCR used 5 µl of the product from the first round of PCR with inner p24 primers (400 nm) fwd 5'-CAAATTACCCTATAGTGCA-3' and rvs 5'-ATGTCACCTCCCTTGGTTCT-3'. Amplification conditions were as follows: 2 min at 95°C, (94°C for 60 s, 55°C for 60 s and 72°C for 60 s) for 30 cycles and 7 min at 72°C.

Statistical analysis

All statistical analyses and graphing were performed using GraphPad Prism 5.0 Software, (San Diego, CA, USA). Statistical significance was determined by either Students t-test for paired samples or Anova with Dunnett post-test pairwise comparison. All flow cytometry was analysed using the FCS Express 2.0 software (De Novo Software, Thornhill, Ontario, Canada).

Results

Thymocytes co-cultured with OP9-DL1 cells are protected from spontaneous apoptosis

Within a co-culture system, contact with epithelial cells results in the release of soluble factors that are required for the viability of thymocytes. Thymocytes were cultured alone or co-cultured with either human TEC or OP9-DL1 cells for 96 hours and cell viability was assessed by trypan blue exclusion. Cell viability was decreased over time in thymocytes that were cultured alone (Figure 1A) indicating that thymocytes on their own (*i.e.* without co-culture) lack appropriate signals for survival. The cellular viability of thymocytes co-cultured with TEC only slightly decreased over time with 84 ± 3% of cells viable after 96 hours. The viability of thymocytes co-cultured with OP9-DL1 was also maintained with 92 ± 9% of thymocytes remaining viable after

96 hours of co-culture, indicating that both culture systems are able to provide the survival signals required for thymocytes in a short term culture. During the 96 hour culture there was a decrease in cell number in all culture conditions. This could possibly be due to the requirement for IL-7 and Flt3 ligand which is known to support differentiation of thymocyte in OP9-DL1 cultures [27-29]. The addition of IL-7 to either co-culture system resulted in higher levels of viability and increased the number of thymocytes in culture (data not shown). In order to confirm that the co-culture systems provide adequate survival signal, we measured apoptosis of the cells in culture. The level of spontaneous apoptosis as measured by annexin V⁺/PI⁺ in thymocytes and after 96 hours was 56 ± 27% when cells were cultured alone and 57 ± 14% when thymocytes were co-cultured with TEC (Figure 1C). Co-culture with OP9-DL1 however resulted in protection from apoptosis with only 13 ± 5% of thymocytes staining annexin V⁺/PI⁺, significantly lower than co-cultures with TEC (p=0.009; Figure 1C). When the proportion of total annexin V⁺ cells was evaluated (annexin V⁺/PI⁺ and annexin V⁺/PI⁻) similar results were obtained.

The effect of co-culture on thymocyte phenotype

In order to determine if the subset distribution of total human

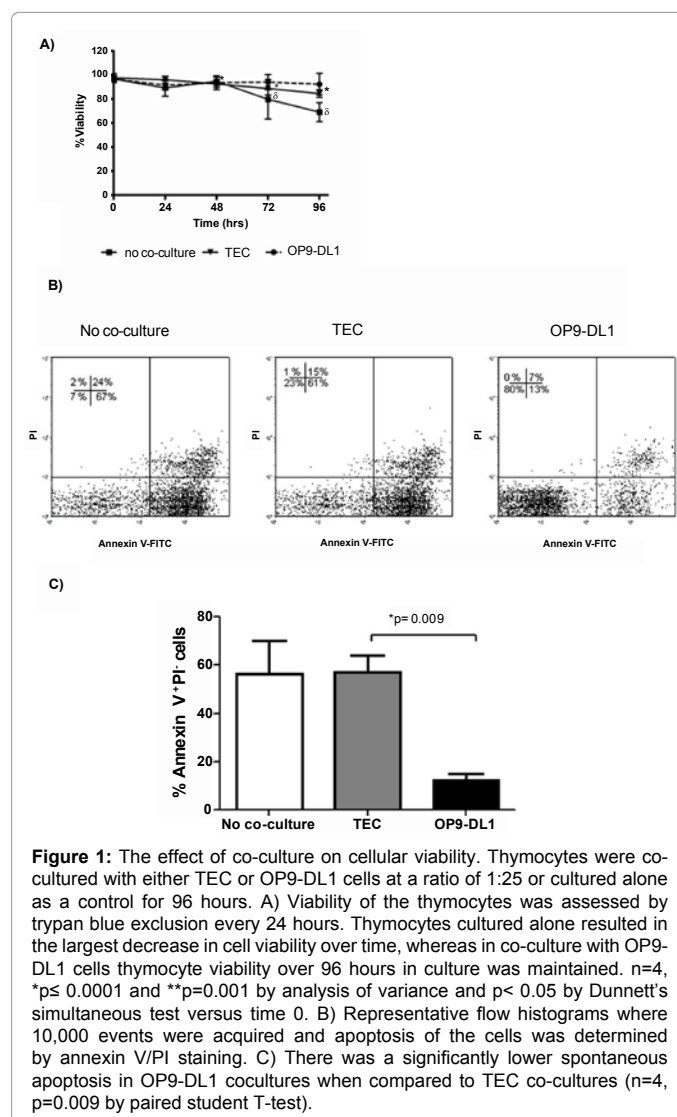


Figure 1: The effect of co-culture on cellular viability. Thymocytes were co-cultured with either TEC or OP9-DL1 cells at a ratio of 1:25 or cultured alone as a control for 96 hours. A) Viability of the thymocytes was assessed by trypan blue exclusion every 24 hours. Thymocytes cultured alone resulted in the largest decrease in cell viability over time, whereas in co-culture with OP9-DL1 cells thymocyte viability over 96 hours in culture was maintained. n=4, *p≤ 0.0001 and **p=0.001 by analysis of variance and p< 0.05 by Dunnett's simultaneous test versus time 0. B) Representative flow histograms where 10,000 events were acquired and apoptosis of the cells was determined by annexin V/PI staining. C) There was a significantly lower spontaneous apoptosis in OP9-DL1 cocultures when compared to TEC co-cultures (n=4, p=0.009 by paired student T-test).

thymocytes is altered in short term co-cultures, we measured the phenotype of thymocytes co-cultured with either TEC or OP9-DL1 for 96 hours. Short term co-culture with OP9-DL1 cells resulted in a lower proportion of cells in the CD3⁺DP subsets in comparison to TEC cultures, although this did not reach statistical significance. There were also a higher proportion of SP4 cells when compared to TEC co-cultures (12% vs. 29% respectively p=0.04; Figure 2B). Since IL-7 is critical for thymocyte function and the expression of its receptor is highly regulated on thymocytes, we measured the effect of co-culture on the expression of the IL-7 receptor (CD127). Co-culturing thymocytes with OP9-DL1 resulted in lower CD127 expression on SP4 cells when compare to TEC co-cultures (29.8 ± 14.5% vs. 51.8 ± 1.3%, p=0.05 respectively; Figure 2C). Culture conditions had no significant effect on CD127 expression on the other thymic subsets.

IL-7 downregulates CD127 expression on thymocytes in OP9-DL1 co-cultures

Since IL-7 is an important mediator of thymocyte differentiation and maturation, we measured the effect of co-culture on the ability of thymocytes to respond to IL-7. One established aspect of IL-7 activity is the downregulation of CD127 receptor expression on the surface

of T-cells [23]. To determine the effect of OP9-DL1 co-culture on IL-7 regulation of the CD127 receptor we measured the effect of IL-7 stimulation of thymocytes in OP9-DL1 co-cultures. IL-7 stimulation resulted in a rapid decrease in CD127 on mature thymocytes (Figure 3). The decrease was similar to what has been previously reported for thymocytes co-cultured with TEC [23]. At higher concentrations of IL-7 (5000 pg/ml) the decrease in CD127 expression was maintained through 96 hours in DP, SP4 and SP8 thymic subsets. The kinetics of CD127 decrease varied with the concentration of IL-7. At the lower concentration of 100 pg/ml of IL-7 the decrease in CD127 was transient with a recovery of CD127 receptor expression observed by 48 hours (Figure 3).

Co-culture is required to maintain IL-7 responsiveness of thymocytes

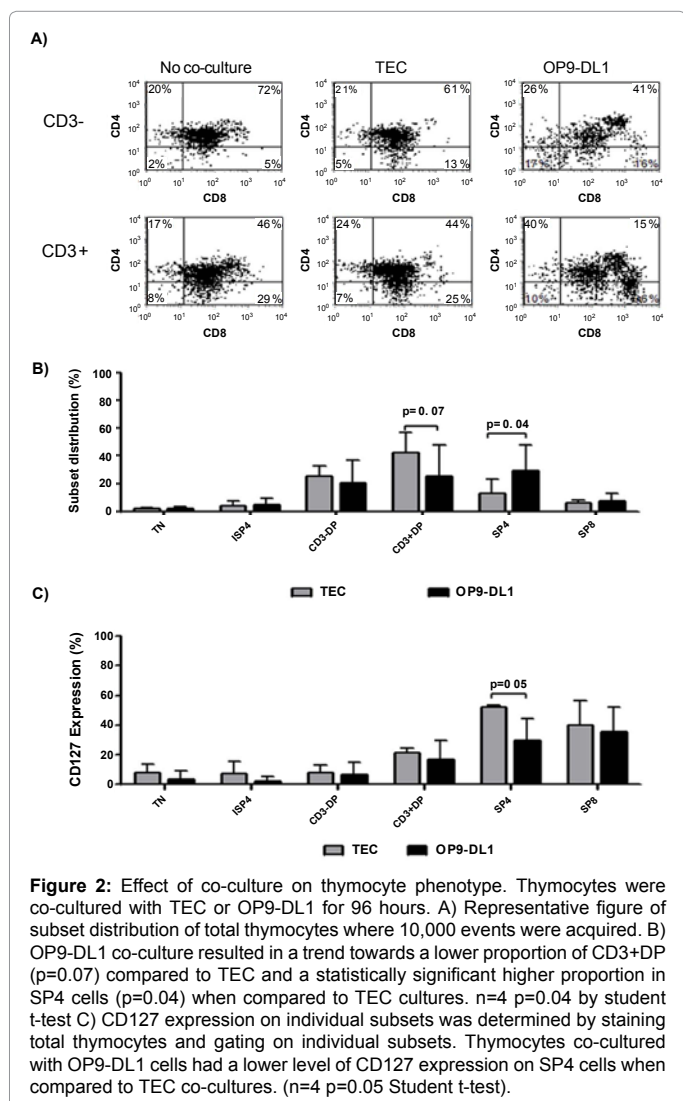
To determine if human thymocytes in co-culture remained functional *ex vivo*, we co-cultured thymocytes with TEC or OP9-DL1 and measured IL-7 responsiveness. IL-7 stimulation did not induce phosphorylation of STAT-5 in thymocytes when cultured alone (Figure 4). Thymocytes that were co-cultured with OP9-DL1 had a significantly higher level of basal pSTAT-5 when compared to thymocytes co-cultured with TEC, as measured by the percentage of pSTAT-5⁺ cells (5.3 ± 1.8% vs. 1.0 ± 0.4%; p=0.007). IL-7 stimulation of thymocytes resulted in a statistically significant increase in pSTAT-5 (Figure 4), which is consistent with previous reports [30-32]. Thymocytes that were co-cultured with OP9-DL1 cells tended to exhibit a greater degree of Stat-5 phosphorylation in response to IL-7 than thymocytes co-cultured with TEC (OP9-DL1: 17.4 ± 5.8% vs. TEC: 11.3 ± 1.1%; p=0.07), although this did not reach statistical significance. However the absolute increase in pSTAT-5 induced by IL-7 was similar in both co-culture conditions (OP9-DL1: 10.2% ± 1.4% increase and TEC: 12.1% ± 6.6% increase).

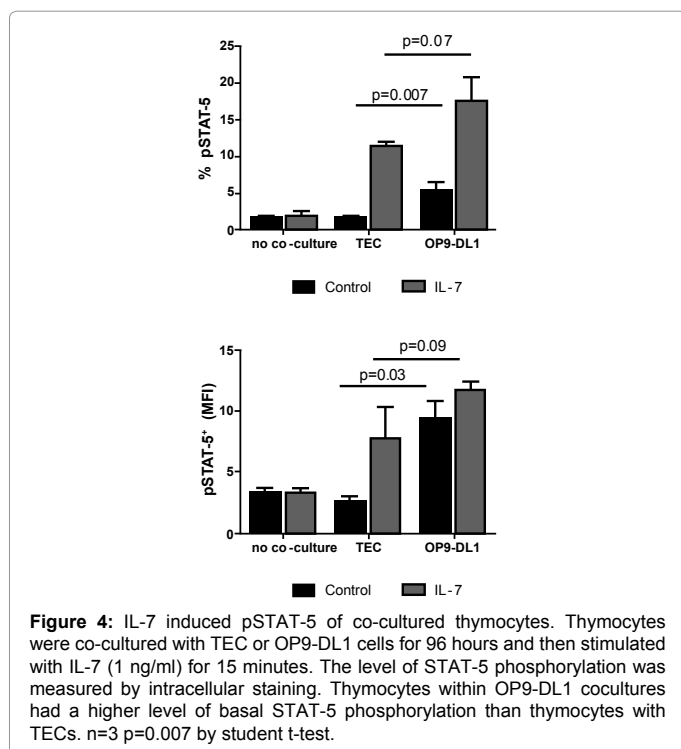
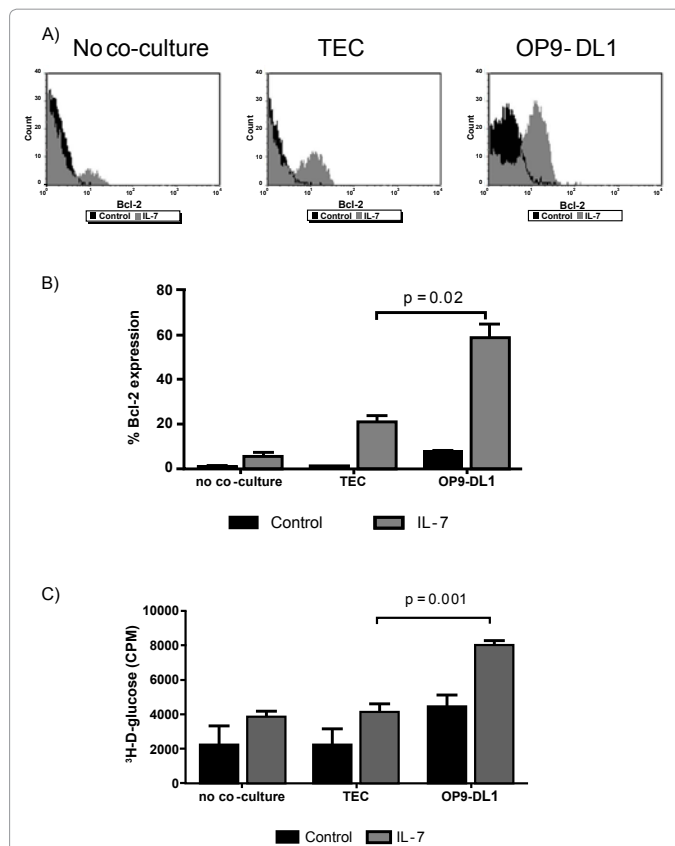
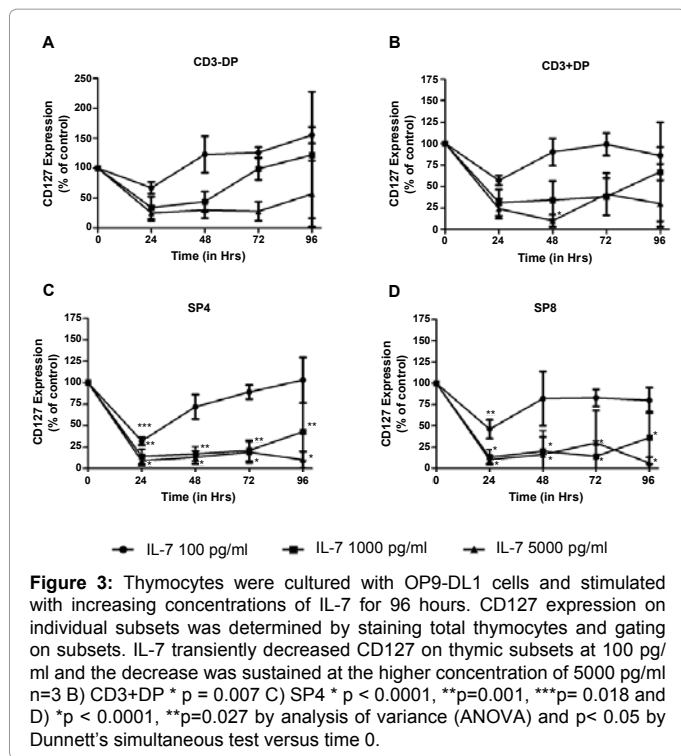
IL-7-induced Bcl-2 expression is enhanced in thymocytes co-cultured with OP9-DL1 cells

IL-7 has been reported to induce Bcl-2 expression in thymocytes [32,33]. IL-7 had little effect on Bcl-2 expression in thymocytes cultured alone (Figure 5). We observed a higher level of basal Bcl-2 expression in bulk thymocytes following 96 hours of culture in OP9-DL1 co-cultures when compared to TEC co-cultures as measured by the percentage of cells expressing Bcl-2 (TEC: 1.0 ± 0.0% vs. OP9-DL1: 7.0 ± 1.7%; p=0.002). IL-7 stimulation resulted in a higher percentage of cell expressing Bcl-2 in thymocytes co-cultured with OP9-DL1 when compared to thymocytes co-cultured with TEC (59.0 ± 10.4% vs. 20.3 ± 6.1%; Figure 5B p=0.003). The absolute increase in Bcl-2 expression following IL-7 stimulation of thymocytes was also significantly higher in thymocytes co-cultured with OP9-DL1 then with thymocytes co-cultured with TEC (52.0 % ± 9.8% vs. 19.3 % ± 6.1%; P=0.012).

IL-7-induced glucose uptake is enhanced in thymocytes co-cultured with OP9-DL1 cells

To determine the effect of IL-7 on metabolic processes, IL-7-induced glucose uptake in thymocytes was measured. IL-7 has been demonstrated to induce glucose uptake in recent thymic emigrants and circulating T-cells [25,34]. Thymocytes were either cultured alone or co-cultured with TEC or OP9-DL1 cells and stimulated with IL-7 (10 vg/ml) for 96 hours (Figure 5C). Thymocytes that were co-cultured with OP9-DL1 cells tended to have a higher level of basal glucose uptake when compared to thymocytes co-cultured with TEC, however this difference did not reach statistical significance (OP9-DL1:





4401 ± 1333 cpm vs. TEC: 2163 ± 1665 cpm; p=0.07). Thymocytes that were co-cultured with OP9-DL1 had greater levels of glucose uptake following IL-7 stimulation than thymocytes co-cultured with TEC (OP9-DL1: 8044 ± 345 cpm vs. TEC: 4144 ± 941 cpm; p=0.001). Although thymocytes co-cultured with OP9-DL1 cells had higher levels of IL-7-induced glucose uptake the absolute increase in glucose uptake following IL-7 was similar in both culture systems.

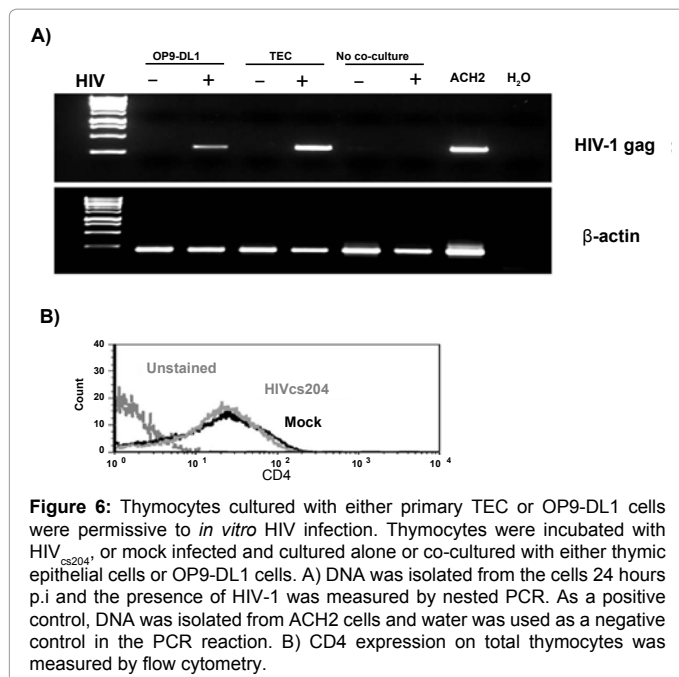
Figure 5: IL-7 enhances thymocytes survival of co-cultured thymocytes. A) Thymocytes were cocultured with TEC or OP9-DL1 cells for 96 hours and then were stimulated with IL-7 (1 ng/ml) for 48 hours. Bcl-2 expression was measured by intracellular staining. Thymocytes co-cultured with OP9-DL1 had a significantly higher level of Bcl-2 expression in response to IL-7 than thymocytes cocultured with TEC. n=4 p=0.003 by student t-test. B) Thymocytes were co-cultured with TEC or OP9-DL1 cells and stimulated with IL-7 for 96 hours. Glucose uptake was measured in the thymocytes by ³H-D-glucose. Thymocytes co-cultured with OP9-DL1 had a significantly higher level of glucose uptake in response to IL-7 than thymocytes co-cultured with TEC. n=3 p=0.007 by student t-test.

Thymocytes co-cultured with OP9-DL1 cells are infected by HIV-1

Thymocytes were infected *in vitro* at an m.o.i of 0.01 with a dual tropic strain of HIV and cultured alone or co-cultured with either OP9-DL1 or TEC as co-culture conditions provide the required stimulus for thymocytes to be infected [4,14]. CD4 expressing thymocytes are the main targets of HIV and have been shown to express both CXCR4 and CCR5 [35,36]. To demonstrate infection of thymocytes, the presence of HIV-1 DNA in thymocytes was measured by nested PCR. HIV infected thymocytes cultured alone had no detectable gag DNA (Figure 6B) confirming the requirement for cell contact with TEC for HIV infection *in vitro* [4,14]. HIV infected thymocytes that were co-cultured with either TEC or OP9-DL1 cells had detectable viral DNA (Figure 6A). HIV infection did not affect the overall expression of CD4 on thymocytes (Figure 6B). This is the first time that OP9-DL1 cells have been shown to provide the appropriate microenvironment for HIV infection of thymocytes.

Discussion

T-cell development requires a specialized microenvironment that



is mainly provided by the thymic stroma [37]. A number of culture systems have been developed to study T-cell development *in vitro*, however they primarily involve work with mice. The OP9 murine cells were first used to support the development of B-cells; however the cell line would not support T-cell development, possibly because it did not provide notch signalling which is required for T-cell commitment and development. The OP9-DL1 and OP9-DL4 culture systems, which provide notch signalling, have been widely used for the study of commitment of precursors cells and subsequent T-cell development [20]. Although the system is based on a mouse stromal cell line it has been demonstrated to support the development of human hematopoietic stem cells, and human cord blood in long term cultures [21,22].

To understand the potential role that exogenous stimuli or viral infection may play in thymic dysfunction there is a requirement for an *in vitro* culture system that can support a heterogeneous population of human thymocytes. It has been previously established that contact with TEC is required in order to maintain thymocyte viability and allow permissiveness for *in vitro* HIV infection [4]. In this study we evaluated the capability of OP9-DL1 cells to support the function of human thymocytes and allow for the permissiveness for *in vitro* HIV infection.

Our results confirmed the importance of a co-culture system for functional thymocyte studies since thymocytes cultured alone exhibited significantly reduced viability and responded poorly to IL-7 (Figure 1, Figure 4, Figure 5). Several factors are released upon co-culture of thymocytes with TEC that play a role in thymocyte viability, proliferation and activation. Such factors include hormones such as thymulin [38-40] and cytokines, including IL-1, IL-6, and IL-7 [41]. The viability of thymocytes was the greatest with OP9-DL1 co-culture; therefore they appear to be a good candidate for co-culture with a heterogeneous population of thymocytes.

Co-culture with OP9-DL1 cells protects thymocytes from apoptosis (Figure 1C). *In vivo* the majority of thymocytes are undergoing apoptosis due to the selection process. Thymocytes studied *ex-vivo* may

have already received certain signals and have entered the apoptotic pathway prior to isolation and co-culture. Notch signalling leads to protection from T-cell receptor (TCR)-induced apoptosis as well as glucocorticoid induced apoptosis, hence thymocytes co-cultured with OP9-DL1 may be expected to have reduced apoptosis [42-45].

To compare the co-culture systems we determined the effect of the co-culture systems on cell subset distribution of a heterogeneous population of thymocytes in a short term culture. Thymocyte subset distribution was slightly different within the OP9-DL1 co-culture when compared to co-culture with TEC. The proportion of CD3⁺DP cells was lower, while the proportion of SP4 cells was higher in thymocytes that were co-cultured with OP9-DL1 cells. Since the maturation and development of T-cells requires long term culture [5], the effect on phenotype that we observed within 96 hours is probably not due to maturation of cells from CD3⁺DP to SP4 cells. One possible explanation could be decreased proliferation in the CD3⁺DP subset resulting in an alteration in the proportion of cells within the other subsets of thymocytes co-cultured with OP9-DL1. The observed difference between the two culture systems is probably not due to differences in notch signalling since TEC also express notch ligands such as jagged-1, jagged 2 and DL1 [46].

The expression of CD127 is highly regulated in thymocytes [47]. Our data revealed a lower level of CD127 expression on SP4 cells within OP9-DL1 cultures when compared to TEC. Multiple cytokines have regulatory effect on the expression of CD127. IL-2, IL-4 and IL-7 stimulation results in decreased CD127 expression on the surface of both thymocytes and mature CD4⁺ and CD8⁺ T-cells [23,24,48-51]. Therefore, the lower levels of CD127 on SP4 cells may be due to cytokines produced OP9-DL1/thymocyte cultures. In fact, mean CD127 expression was lower in all subsets within the OP9-DL1 co-culture system, but this difference only reached statistical significance within the SP4 subset. Both OP9-DL1 and human TECs are capable of producing IL-7 [52]. However, the level of IL-7 produced within these systems is likely negligible since co-culture alone did not affect CD127 expression on SP8 cells (Figure 2) and we have shown that as little as 100 μ g/ml of IL-7 can significantly reduce CD127 expression on SP8 cells (Figure 3). Therefore, the amount of endogenous IL-7 is too low to affect the outcome of our assays.

As a gauge of IL-7 function, we measured the effect of IL-7 stimulation on CD127 expression within an OP9-DL1 co-culture. We were able to demonstrate that human thymocytes in OP9-DL1 co-cultures were able to respond to IL-7, as measured by CD127 down regulation and that this response was greater than previously reported with TEC co-cultures [23]. This suggests that co-culture with OP9-DL1 may enhance IL-7 responsiveness of thymocytes.

We again demonstrated the importance of using a co-culture system in studies of thymocyte function since thymocytes that are cultured without the benefit of co-culture are unresponsive to IL-7 stimulation as measured by STAT-5 phosphorylation and Bcl-2 induction. Interactions between TEC or OP9-DL1 cells and thymocytes were sufficient for thymocytes to remain responsive to IL-7. Thymocytes co-cultured with OP9-DL1 cells had higher levels of basal STAT-5 phosphorylation than thymocytes co-cultured with TECs. This may be due to soluble factors that are released following thymocyte/OP9-DL1 cell interactions which lead to cell activation and hence STAT-5 phosphorylation. Although the level of STAT-5 phosphorylation following IL-7 stimulation was higher in OP9-DL1 cultures, the absolute change in STAT-5 phosphorylation following stimulation was similar in the two co-culture systems. Therefore, the

higher level of STAT-5 phosphorylation in OP9-DL1 cultures may be due to the activation state of the thymocytes rather than a specific increase in IL-7 responsiveness.

Given its role in the apoptotic pathway, the level of basal Bcl-2 expression could be indicative of the propensity of the thymocytes towards cell survival. We demonstrated that co-culture of thymocytes with OP9-DL1 cells resulted in higher level of Bcl-2 expression when compared to cells cultured with TEC or cultured alone. Bcl-2 is upregulated in thymocytes in order to protect cells from apoptosis [53,54] and notch signalling leads to increases in Bcl-2 expression in thymocytes [55]. Hence the decrease in apoptosis that was seen in co-culture with OP9-DL1 may be due to this increased level of Bcl-2. Our data also demonstrated higher levels of glucose uptake in thymocytes co-cultured with OP9-DL1 cells. Increases in glucose metabolism are one way in which cells regulate survival [34,56] and notch signalling cooperates with IL-7 to increase proliferation of immature thymocytes, glucose metabolism and Bcl-2 induction [57-59].

Through the evaluation of these co-culture systems on IL-7 activity, we demonstrated that IL-7 activity, as measured by Bcl-2 induction and glucose uptake, was greater in thymocytes in OP9-DL1 co-culture than those in TEC cultures, indicating that OP9-DL1 cells create a milieu in which thymocytes are more responsive to IL-7.

Although the use of OP9-DL1 cells as a support system for the generation of CD4⁺ and CD8⁺ T-cells from progenitor cells *in vitro* has been well established we demonstrate for the first time that OP9-DL1 cells are able to support the function and responsiveness of a heterogeneous population of mature human thymocytes, as well as provide the necessary signals that are required for *in vitro* infection with HIV. Our data clearly show that co-culture of human thymocytes with OP9-DL1 cells result in greater IL-7 responsiveness than co-cultures with human TEC. This demonstrates that they are an appropriate candidate for further studies of the effect of exogenous stimuli on thymocyte function. Although the backbone of the OP9-DL1 system is a murine cell, the co-culture was able to support human thymocytes and in fact was associated with greater viability of human thymocytes. The use of OP9-DL1 cells will provide a useful tool for future studies on the effect of HIV infection on the function of mature human thymocytes.

Acknowledgements

We appreciatively acknowledge Dr G. Maharajh and staff at the Children's Hospital of Eastern Ontario for providing the thymus samples. We are grateful to T.M. Schmitt and J.C Zuniga-Pflucker for providing OP9-DL1 cells. This research was supported by grants to J.B.A. from the Ontario HIV Treatment Network (OHTN) [Grant # ROGB131]; the Canadian Institutes of Health Research [Grant #HOP84649] and the Canadian Foundation for AIDS [Grant # 019014]. C.Y. is a recipient of a CIHR studentship and J.B.A. is an OHTN Career Scientist

References

1. Kourtis AP, Ibegbu C, Nahmias AJ, Lee FK, Clark WS, et al. (1996) Early progression of disease in HIV-infected infants with thymus dysfunction. N Engl J Med 335: 1431-1436.
2. Rosenzweig M, Clark DP, Gaulton GN (1993) Selective thymocyte depletion in neonatal HIV-1 thymic infection. AIDS 7: 1601-1605.
3. Pedroza-Martins L, Gurney KB, Torbett BE, Uittenbogaart CH (1998) Differential tropism and replication kinetics of human immunodeficiency virus type 1 isolates in thymocytes: coreceptor expression allows viral entry, but productive infection of distinct subsets is determined at the postentry level. J Virol 72: 9441-9452.
4. Rothe M, Chêne L, Nugeyre MT, Braun J, Barré-Sinoussi F, et al. (1998) Contact with thymic epithelial cells as a prerequisite for cytokine-enhanced human immunodeficiency virus type 1 replication in thymocytes. J Virol 72: 5852-5861.
5. Schmitt N, Nugeyre MT, Scott-Algara D, Cumont MC, Barré-Sinoussi F, et al. (2006) Differential susceptibility of human thymic dendritic cell subsets to X4 and R5 HIV-1 infection. AIDS 20: 533-542.
6. Dion ML, Poulin JF, Bordi R, Sylvestre M, Corsini R, et al. (2004) HIV infection rapidly induces and maintains a substantial suppression of thymocyte proliferation. Immunity 21: 757-768.
7. Meissner EG, Zhang L, Jiang S, Su L (2006) Fusion-induced apoptosis contributes to thymocyte depletion by a pathogenic human immunodeficiency virus type 1 envelope in the human thymus. J Virol 80: 11019-11030.
8. Anderson G, Harman BC, Hare KJ, Jenkinson EJ (2000) Microenvironmental regulation of T cell development in the thymus. Semin Immunol 12: 457-464.
9. Wiles MV, Ruiz P, Imhof BA (1992) Interleukin-7 expression during mouse thymus development. Eur J Immunol 22: 1037-1042.
10. Oosterwegel MA, Haks MC, Jeffrey U, Murray R, Kruisbeek AM (1997) Induction of TCR gene rearrangements in uncommitted stem cells by a subset of IL-7 producing, MHC class-II-expressing thymic stromal cells. Immunity 6: 351-360.
11. Moore NC, Anderson G, Smith CA, Owen JJ, Jenkinson EJ (1993) Analysis of cytokine gene expression in subpopulations of freshly isolated thymocytes and thymic stromal cells using semiquantitative polymerase chain reaction. Eur J Immunol 23: 922-927.
12. Denning SM, Kurtzberg J, Le PT, Tuck DT, Singer KH, et al. (1988) Human thymic epithelial cells directly induce activation of autologous immature thymocytes. Proc Natl Acad Sci U S A 85: 3125-3129.
13. Bonyhadi ML, Su L, Auten J, McCune JM, Kaneshima H (1995) Development of a human thymic organ culture model for the study of HIV pathogenesis. AIDS Res Hum Retroviruses 11: 1073-1080.
14. Chêne L, Nugeyre MT, Guillemard E, Moulian N, Barré-Sinoussi F, et al. (1999) Thymocyte-thymic epithelial cell interaction leads to high-level replication of human immunodeficiency virus exclusively in mature CD4(+) CD8(-) CD3(+) thymocytes: a critical role for tumor necrosis factor and interleukin-7. J Virol 73: 7533-7542.
15. Knutsen AP, Roodman ST, Freeman JJ, Mueller KR, Bouhasin JD (1999) Inhibition of thymopoiesis of CD34+ cell maturation by HIV-1 in an in vitro CD34+ cell and thymic epithelial organ culture model. Stem Cells 17: 327-338.
16. Valentin H, Nugeyre MT, Vuillier F, Boumsell L, Schmid M, et al. (1994) Two subpopulations of human triple-negative thymic cells are susceptible to infection by human immunodeficiency virus type 1 in vitro. J Virol 68: 3041-3050.
17. Jenkinson EJ, Anderson G, Owen JJ (1992) Studies on T cell maturation on defined thymic stromal cell populations in vitro. J Exp Med 176: 845-853.
18. Kingston R, Jenkinson EJ, Owen JJ (1985) A single stem cell can recolonize an embryonic thymus, producing phenotypically distinct T-cell populations. Nature 317: 811-813.
19. Anderson KL, Moore NC, McLoughlin DE, Jenkinson EJ, Owen JJ (1998) Studies on thymic epithelial cells in vitro. Dev Comp Immunol 22: 367-377.
20. Zúñiga-Pflucker JC (2004) T-cell development made simple. Nat Rev Immunol 4: 67-72.
21. Awong G, La Motte-Mohs RN, Zúñiga-Pflucker JC (2008) In vitro human T cell development directed by notch-ligand interactions. Methods Mol Biol 430: 135-142.
22. La Motte-Mohs RN, Herer E, Zúñiga-Pflucker JC (2005) Induction of T-cell development from human cord blood hematopoietic stem cells by Delta-like 1 in vitro. Blood 105: 1431-1439.
23. Young CD, Angel JB (2006) Optimization of culture and storage conditions for an in vitro system to evaluate thymocyte phenotype and function. J Immunol Methods 312: 157-166.
24. Crawley AM, Katz T, Parato K, Angel JB (2009) IL-2 receptor gamma chain cytokines differentially regulate human CD8+CD127+ and CD8+CD127- T cell division and susceptibility to apoptosis. Int Immunol 21: 29-42.
25. Swainson L, Kinet S, Mongellaz C, Sourisseau M, Henriques T, et al. (2007) IL-7-induced proliferation of recent thymic emigrants requires activation of the PI3K pathway. Blood 109: 1034-1042.
26. Young CD, Angel JB (2011) HIV infection of thymocytes inhibits IL-7 activity without altering CD127 expression. Retrovirology 8: 72.

27. Six EM, Benjelloun F, Garrigue A, Bonhomme D, Morillon E, et al. (2011) Cytokines and culture medium have a major impact on human *in vitro* T-cell differentiation. *Blood Cells Mol Dis* 47: 72-78.
28. Wang H, Pierce LJ, Spangrude GJ (2006) Distinct roles of IL-7 and stem cell factor in the OP9-DL1 T-cell differentiation culture system. *Exp Hematol* 34: 1730-1740.
29. Holmes R, Zúñiga-Pflücker JC (2009) The OP9-DL1 system: generation of T-lymphocytes from embryonic or hematopoietic stem cells *in vitro*. *Cold Spring Harb Protoc* 2009: pdb.prot5156.
30. Pallard C, Stegmann AP, van Kleffens T, Smart F, Venkitaraman A, et al. (1999) Distinct roles of the phosphatidylinositol 3-kinase and STAT5 pathways in IL-7-mediated development of human thymocyte precursors. *Immunity* 10: 525-535.
31. Van De Wiele CJ, Marino JH, Murray BW, Vo SS, Whetsell ME, et al. (2004) Thymocytes between the beta-selection and positive selection checkpoints are nonresponsive to IL-7 as assessed by STAT-5 phosphorylation. *J Immunol* 172: 4235-4244.
32. Yu Q, Xu M, Sen JM (2007) Beta-catenin expression enhances IL-7 receptor signaling in thymocytes during positive selection. *J Immunol* 179: 126-131.
33. von Freeden-Jeffry U, Solvason N, Howard M, Murray R (1997) The earliest T lineage-committed cells depend on IL-7 for Bcl-2 expression and normal cell cycle progression. *Immunity* 7: 147-154.
34. Juntilla MM, Wofford JA, Birnbaum MJ, Rathmell JC, Koretzky GA (2007) Akt1 and Akt2 are required for alphabeta thymocyte survival and differentiation. *Proc Natl Acad Sci U S A* 104: 12105-12110.
35. Zaitseva MB, Lee S, Rabin RL, Tiffany HL, Farber JM, et al. (1998) CXCR4 and CCR5 on human thymocytes: biological function and role in HIV-1 infection. *J Immunol* 161: 3103-3113.
36. Zamarchi R, Allavena P, Borsetti A, Stievano L, Tosello V, et al. (2002) Expression and functional activity of CXCR-4 and CCR-5 chemokine receptors in human thymocytes. *Clin Exp Immunol* 127: 321-330.
37. Anderson G, Moore NC, Owen JJ, Jenkinson EJ (1996) Cellular interactions in thymocyte development. *Annu Rev Immunol* 14: 73-99.
38. Dardenne M, Savino W, Gagnerault MC, Itoh T, Bach JF (1989) Neuroendocrine control of thymic hormonal production. I. Prolactin stimulates *in vivo* and *in vitro* the production of thymulin by human and murine thymic epithelial cells. *Endocrinology* 125: 3-12.
39. Yarin AA, Sharova NI, Bulanova EC, Kotchergina NI, Mitin AN, et al. (1996) Hormone Production by Epithelial Cells of Human Thymus *in vitro*. *Russ J Immunol* 1: 17-22.
40. Savino W, Bartoccioni E, Homo-Delarche F, Gagnerault MC, Itoh T, et al. (1988) Thymic hormone containing cells—IX. Steroids *in vitro* modulate thymulin secretion by human and murine thymic epithelial cells. *J Steroid Biochem* 30: 479-484.
41. Yarin AA, Belyakov IM (2004) Cytokines in the thymus: production and biological effects. *Curr Med Chem* 11: 447-464.
42. Jehn BM, Bielke W, Pear WS, Osborne BA (1999) Cutting edge: protective effects of notch-1 on TCR-induced apoptosis. *J Immunol* 162: 635-638.
43. Yang Y, Ashwell JD (1999) Thymocyte apoptosis. *J Clin Immunol* 19: 337-349.
44. Jang J, Choi YI, Choi J, Lee KY, Chung H, et al. (2006) Notch1 confers thymocytes a resistance to GC-induced apoptosis through Deltex1 by blocking the recruitment of p300 to the SRG3 promoter. *Cell Death Differ* 13: 1495-1505.
45. Choi YI, Jeon SH, Jang J, Han S, Kim JK, et al. (2001) Notch1 confers a resistance to glucocorticoid-induced apoptosis on developing thymocytes by down-regulating SRG3 expression. *Proc Natl Acad Sci U S A* 98: 10267-10272.
46. Anderson G, Pongracz J, Parnell S, Jenkinson EJ (2001) Notch ligand-bearing thymic epithelial cells initiate and sustain Notch signaling in thymocytes independently of T cell receptor signaling. *Eur J Immunol* 31: 3349-3354.
47. Sudo T, Nishikawa S, Ohno N, Akiyama N, Tamakoshi M, et al. (1993) Expression and function of the interleukin 7 receptor in murine lymphocytes. *Proc Natl Acad Sci U S A* 90: 9125-9129.
48. Swainson L, Verhoeven E, Cosset FL, Taylor N (2006) IL-7R alpha gene expression is inversely correlated with cell cycle progression in IL-7-stimulated T lymphocytes. *J Immunol* 176: 6702-6708.
49. Vranjkovic A, Crawley AM, Gee K, Kumar A, Angel JB (2007) IL-7 decreases IL-7 receptor alpha (CD127) expression and induces the shedding of CD127 by human CD8+ T cells. *Int Immunol* 19: 1329-1339.
50. Xue HH, Kovanen PE, Pise-Masison CA, Berg M, Radovich MF, et al. (2002) IL-2 negatively regulates IL-7 receptor alpha chain expression in activated T lymphocytes. *Proc Natl Acad Sci U S A* 99: 13759-13764.
51. Crawley AM, Vranjkovic A, Young C, Angel JB (2010) Interleukin-4 downregulates CD127 expression and activity on human thymocytes and mature CD8+ T cells. *Eur J Immunol* 40: 1396-1407.
52. Cho SK, Webber TD, Carlyle JR, Nakano T, Lewis SM, et al. (1999) Functional characterization of B lymphocytes generated *in vitro* from embryonic stem cells. *Proc Natl Acad Sci U S A* 96: 9797-9802.
53. Veis DJ, Sorenson CM, Shutter JR, Korsmeyer SJ (1993) Bcl-2-deficient mice demonstrate fulminant lymphoid apoptosis, polycystic kidneys, and hypopigmented hair. *Cell* 75: 229-240.
54. Reed JC (1997) Double identity for proteins of the Bcl-2 family. *Nature* 387: 773-776.
55. Deftos ML, He YW, Ojala EW, Bevan MJ (1998) Correlating notch signaling with thymocyte maturation. *Immunity* 9: 777-786.
56. Jacobs SR, Rathmell JC (2006) Lymphocyte selection by starvation: glucose metabolism and cell death. *Trends Immunol* 27: 4-7.
57. Magri M, Yatim A, Benne C, Balbo M, Henry A, et al. (2009) Notch ligands potentiate IL-7-driven proliferation and survival of human thymocyte precursors. *Eur J Immunol* 39: 1231-1240.
58. García-Peydró M, de Yébenes VG, Toribio ML (2006) Notch1 and IL-7 receptor interplay maintains proliferation of human thymic progenitors while suppressing non-T cell fates. *J Immunol* 177: 3711-3720.
59. Ciofani M, Zúñiga-Pflücker JC (2005) Notch promotes survival of pre-T cells at the beta-selection checkpoint by regulating cellular metabolism. *Nat Immunol* 6: 881-888.