

White Rot Fungus (*Pleurotus pulmonarius*) Cultivated on Lead Contaminated Rice Straw Induced Haematotoxicity and Lead Accumulation in Liver and Kidney of Wistar Rats

Rhoda S. Onifade¹, Chibuisi G. Alimba², Clementina O. Adenipekun^{1*} and Adekunle A. Bakare²

¹Department of Botany, Mushroom Biotechnology Unit, University of Ibadan, Nigeria

²Department of Zoology, Cell Biology and Genetics Unit, University of Ibadan, Nigeria

*Corresponding author: Clementina O. Adenipekun, Mushroom Biotechnology Unit, Department of Botany, University of Ibadan, Nigeria, Tel: +2348033683516; E-mail: co.adenipekun@ui.edu.ng, oyinpek@yahoo.com

Received date: May 12, 2016; Accepted date: June 10, 2016; Published date: June 17, 2016

Copyright: © 2016 Onifade RS, et al. This is an open-access article distributed under the terms of the Creative Commons Attribution License, which permits unrestricted use, distribution, and reproduction in any medium, provided the original author and source are credited.

Abstract

White rot fungi (*Pleurotus* species) are edible mushrooms known for their ability to bioaccumulate contaminants including metals from the environment. There is scarcity of information on the toxic effects of the bioaccumulated metals on organisms at higher trophic levels. In this study, we investigated alterations in haematological indices and erythrocyte morphology and lead bioaccumulation potentials in liver and kidney of Wistar rats fed aqueous extract of *Pleurotus pulmonarius* cultivated on lead (0, 10, 100, 200, 500 and 1000 mg/L) contaminated rice straw substrate. After 8 weeks of cultivation, mushroom did not germinate in the 1000 mg/L Pb contaminated rice straw. 1 g of mushroom harvested from each of the remaining concentrations showed significant ($p < 0.001$) increase in Pb concentration. Rats exposed to 0.5 mL of the contaminated mushroom extracts for 30 days, showed decreased leucocyte, erythrocyte, haematocrit, platelet and haemoglobin concentrations. Abnormal erythrocyte morphologies like acanthocytes, schizocytes and tear drop were significantly higher in the Pb treated mushroom fed rats than the control. The kidney and liver of treated rats showed significant ($p < 0.05$) increase in Pb concentration with higher Pb bioaccumulation factor in the kidney than the liver. Also insignificant decrease in body and organ weight was observed in treated rats than the control. Pb accumulation in *P. pulmonarius* increased liver and kidney Pb bioaccumulation and induce alterations in haematological indices and erythrocyte morphology in rats. This poses public health threat to humans and other tertiary consumers foraging white rot fungi from metal contaminated sites.

Keywords: Bioaccumulation potentials; Erythrocyte morphology; Hematological indices; Lead contaminated *Pleurotus pulmonarius*; Rats

Introduction

Human exposure to toxic chemicals may come from air, soil, water and food. Heavy metals are ubiquitous carcinogens with multiple sources of environmental contamination [1], and are transferred through aquatic and terrestrial food webs to humans and other animals posing health risk [2,3]. There is increasing utilization of mushrooms as important delicacies in most countries of the world due to their significant role in nutrition. They also serve as therapeutic food useful in preventing diseases such as hypertension, hypercholesterolemia and cancer [4,5], hence edible mushrooms are now widely cultivated throughout the world. There are increasing reports that these mushrooms are effective in bioremediation or biological treatment of polluted sites [6]. This is due to their ability to efficiently degrade, utilize and transform organic and inorganic chemicals in the substrates [7]. This process usually leads to increase in the accumulation of chemicals including toxic metals in their fruit bodies [8,9]. There is possibility that the accumulated chemicals can be transferred from one environmental matrix to another, which may lead to health problems and biodiversity loss [10-12]. It was recently reported that the consumption of mushrooms collected from the wild induced nausea, vomiting and increased Aspartate Aminotransferase (AST) and Alanine Aminotransferase (ALT) among human

population, due to bioaccumulated chemicals in the consumed mushroom [13]. The altered liver enzymes and vomiting suggest abnormal functioning of the liver in the exposed human population.

Several studies focused on the evaluation of heavy metal accumulation potential of various species of mushrooms [14-16]. From these studies, *Pleurotus* species along with other species were found to be efficient in accumulating toxic metals such as Pb, Hg and Cd from polluted substrates into their fruit bodies [9,16]. However, information is scarce on the potential impact of the accumulated metal(s) on bioaccumulation potential in mammalian tissues and possible systemic toxicity. Pb is one of the toxic metals in the priority list of hazardous substances recommended for toxicological assessment [17]. Environmental and occupational exposure to this metal has been linked to increasing hematological disorder, neurological damage and cancer risk [18,19]. In 2010, 400 individuals died due to lead poisoning during unsafe mining and ore processing in Zamfara State, Nigeria [20]. This report suggests increasing exposure to Pb from various sources and its potential health impact in biota.

Pleurotus pulmonarius (White rot fungus), besides its nutritional and therapeutic values, is well known for its ability to accumulate metals and radioactive substances from contaminated substrates [21,22]. This feature also necessitated its use in the biological treatment of landfill leachate and effluent contaminated sites [23,24]. Consuming such *P. pulmonarius* (primary producer in a number of terrestrial ecosystems) by many higher consumers and humans may increase exposure to toxic metals. This study therefore aims at investigating the

haematotoxicity and Pb bioaccumulation potentials of the liver and kidney of Wistar rats fed *P. pulmonarius* cultivated on lead contaminated rice straw for 30 days.

Materials and Methods

Rice straw preparation and *P. pulmonarius* cultivation

Rice straw (substrate) used for the cultivation of the White rot mushroom was obtained from the International Institute of Tropical Agriculture (IITA), Ibadan. They were air dried for a period of 2 weeks and cut into 3-5 mm size using guillotine. Chopped rice straw was completely immersed in different concentrations (10, 100, 200, 500 and 1000 mg/L) of Lead chloride (Tianjin Yong Da Chemicals, China) solution and the control (distilled water) for 24 hr. The selected concentrations are the range of previously reported Pb levels in mushrooms [6,7]. 80 g of the rice straw from each of the selected concentrations were added into five (5) pre-cleaned bottles per concentration and covered with aluminum foil. The preparations were autoclaved at 121°C for 30 min for sterilization and allowed to cool to 25°C.

The different concentrations of the lead contaminated rice straw were inoculated with 10 g of inbred strain culture of *P. pulmonarius*, obtained from the Plant Physiology Laboratory, Department of Botany, University of Ibadan, Nigeria, and were kept in the incubator (28 ± 2°C) until they were completely ramified within 4 weeks (Figure 1a). The aluminum foil was carefully removed and the ramified mushroom wetted with distilled water to moisten it and transferred to the mushroom cultivation unit (Figure 1b). The fully developed fruit bodied mushrooms (cap and stipe) were harvested and dried at 50°C for 48 hr (Figure 1c).

Heavy metal analysis of the cultivated mushroom

Harvested mushroom fruiting bodies from each replicates of the different concentrations and control were dried and ground using Cutting Boll Mill. 1 g from each replicate was added into a graphite crucible and digested with 10 mL of 65% HNO₃ in a fume chamber digestion system for 15 min. The digested material was diluted in distilled water and analyzed using atomic absorption spectrometer (AAS) (Buck Scientific model 201 VGP, East Norwalk, USA) for Pb concentrations.

Animals and experimental design

Wistar rat (*Rattus norvegicus*), 7-8 weeks old (mean ± SD body weight of 131.5 ± 3.04), obtained from the animal house unit of the Department of Physiology, College of Medicine, University of Ibadan, Nigeria, were acclimated to laboratory conditions of 26 ± 1°C and 12/12 h dark/light modes for 14 days prior to the experimental set up. The rats were fed with standard animal feed (Ladokun feed Nigeria), with access to drinking water ad libitum. Five (5) rats per treatment group were randomly selected into the various concentrations of the metal treated mushroom and control.

The dried powdered grounded mushroom was measured and 10 g soaked in 100 ml of distilled water for 48 hr with regular stirring using clean glass rod to obtain aqueous extract [25]. The extracted solution was filtered using Whatmann[®] No. 42 filter paper to remove solid particles. 0.5 ml of the mushroom extract was orally administered to each rat for 30 consecutive days. Similar treatment was concurrently

given to the control group, and the rats maintained in standard conditions according to guide for care and use of Laboratory Animals published by US National Institutes of Health (NIH Publication No. 85-23) [26].

Hematological analysis and organ weight measurement

At the end of 30 day exposure, rats were fasted overnight, weighed and blood was collected from the orbital plexus using heparinized 70 ml micro-hematocrit capillary tubes into EDTA tubes. The recommended haemogram: Red blood cell (RBC) count, haemoglobin (Hb) content, platelet (PLT) count, haematocrit and total white blood cell (WBC) count [27] were measured to assess alterations in haematological indices using automated analyzer, (Abbott Hematology Analyzer Cell-Dyn 1700, 178 Abbott Laboratories, Abbott Park, Illinois, USA).

Aliquot of the blood samples were used to make thin blood films on pre-cleaned slides (three slides per rat), air-dried, fixed in absolute methanol for 30 min and stained in 5% Giemsa solution for 20 min to determine abnormal erythrocyte morphologies. 1000 erythrocytes were scored per rat for the presence of poikilocytosis (variations in red blood cell shapes) in accordance with Cheesebrough [28] procedures.

Body and organ weight measurement

Body weight of the treated and control rats was measured at the beginning of the experiment and once weekly for the duration of exposure. At the end of exposure, terminal body weight was also measured before blood collection, and rats were sacrificed by cervical dislocation. The liver and kidney were surgically removed, rinsed with ice-cold physiological saline, blotted dry and weighed (absolute organ weight) using Acculab[®] USA, Model-vic-303 electronic analytical weighing balance. The relative organ weight was determined using the formula: organ weight/ body weight × 100 g.

Lead accumulation measurement in liver and kidney tissues

The liver and kidney were placed in Pyrex dishes and oven dried to a constant weight at 60°C for a period of 48 hr. One gram of the dried liver and kidney tissues was accurately weighed into clean 100 mL Erlenmeyer flask and 5 mL Perchloric acid (70%) and 10 mL nitric acid (55%) (Merck Darmstadt, Germany) were added. Digestion was performed on a hotplate at 150-200°C for about 4 hr until a clear solution was obtained. The resultant residue was cooled to room temperature and made up to 50 mL using double distilled water [29]. Pb concentration in the tissues was determined using atomic absorption spectrophotometer (Buck Scientific model 201 VGP, USA). Sample analysis was performed in triplicate and Pb concentration in the liver and kidney expressed as mg/g dry weight.

Bioaccumulation factor (BAF, often used to compare the body burden of chemical in an organism with the degree of contamination in the substrate) of lead in the liver and kidney was calculated in accordance with Holwerda [30] with slight modification.

$$\text{Bioaccumulation factor (BAF)} = \frac{[M]_{\text{treated}} - [M]_{\text{control}}}{[M]_{\text{mushroom}}}$$

Where [M]_{treated}, [M]_{control}, and [M]_{mushroom} are the Pb concentrations in the experimental group (liver and kidney of the rats exposed to various concentrations of mushroom), Pb concentrations in the control group (liver and kidney from the control rat), and Pb concentration in the mushroom cultivated in rice straw contaminated with various concentration of Pb, respectively.

Statistical analysis

All statistical analyses were conducted with Graphpad prism 5.0[®] computer programs. Data are presented as mean \pm standard deviation (SD). One-way analysis of variance (ANOVA) was used to determine the differences among various groups. While Dunnett multiple posthoc-test was used to compare the level of significance ($p < 0.05$) of each treated group with the control.

Results

Lead accumulation in mushroom, liver and kidney of rats and BAF in the liver and kidney

At 1000 mg/L of Pb contaminated rice straw, there was no *P. pulmonarius* fruit body germination even at 8 weeks after full ramification of the rice straw by the mycelium (Figure 1a).



Figure 1a: Completely ramified *P. pulmonarius* after 4 weeks of cultivation. 1b. Ramified mushroom germinated in the mushroom cultivation Unit. 1c. Harvested and dried fully developed fruit bodied mushrooms (cap and stipe).

Conc (mg/L)	<i>P. pulmonarius</i> cultivated in Pb contaminated rice straw (mg/g)	Liver (mg/g)	Kidney (mg/g)	BAF (liver)	BAF (kidney)
Control	BDL	BDL	BDL	-	-
10	0.017 \pm 0.003	0.020 \pm 0.002	0.006 \pm 0.002	1.198 \pm 0.020	0.359 \pm 0.005
100	0.167 \pm 0.033 ^a	0.004 \pm 0.002	0.276 \pm 0.072 ^a	0.024 \pm 0.010	1.653 \pm 0.200
200	0.270 \pm 0.023 ^a	0.006 \pm 0.002	1.250 \pm 0.210 ^b	0.022 \pm 0.003	4.630 \pm 0.910
500	1.320 \pm 0.023 ^a	0.010 \pm 0.001	4.582 \pm 0.171 ^c	0.008 \pm 0.006	3.471 \pm 0.072

Table 1: Mean Pb accumulation in *Pleurotus pulmonarius* cultivated in Pb contaminated rice straw and in liver and kidney of rat fed with the *P. pulmonarius* for 30 days, and bioaccumulated factors in liver and kidney of the rats. Values are in mean \pm SD (means of five replicates). Superscripts differ significantly (^a $p < 0.05$; ^b $p < 0.01$; ^c $p < 0.001$) from the control using Dunnett's multiple post hoc test. BAF-Bioaccumulation factor. sBDL-Below Detectable Limits (assumed to be 0.00 \pm 0.00).

There was concentration dependent significant ($p < 0.001$) increase in Pb accumulation in the fruit bodies of *P. pulmonarius* cultivated in the Pb contaminated rice straw compared to the control (Table 1).

Similarly, Pb accumulation in the kidney of *P. pulmonarius* treated rats showed concentration dependent significant ($p < 0.001$) increase compared to the control group. However lead accumulation in the liver of rats fed with the *P. pulmonarius* extract increased but was not significantly ($p = 0.5985$) different from the control (Table 1). Bioaccumulated factor for Pb in the kidney of rats showed increased Pb transfer factor in accordance with Pb concentration in the mushroom, while the BAF of Pb in the liver did not increase in accordance with Pb concentration in the mushroom (Table 1).

Effects of Pb accumulated mushroom on body and organ weight change of rats

There was no significant change in the weekly body weight gain; 1st week ($p = 0.5969$), 2nd week ($p = 0.6215$), 3rd week ($p = 0.8433$), 4th week ($p = 0.6685$) and termination week ($p = 0.1487$), of the treated rats compared to the control (Figure 2).

However percentage change of the terminal weight gain was lower in the treated rats compared to the control (Table 2). There was a concentration dependent insignificant ($p > 0.05$) decrease in both absolute and relative liver and kidney weight gain in the treated rats compared to the control group (Table 2).

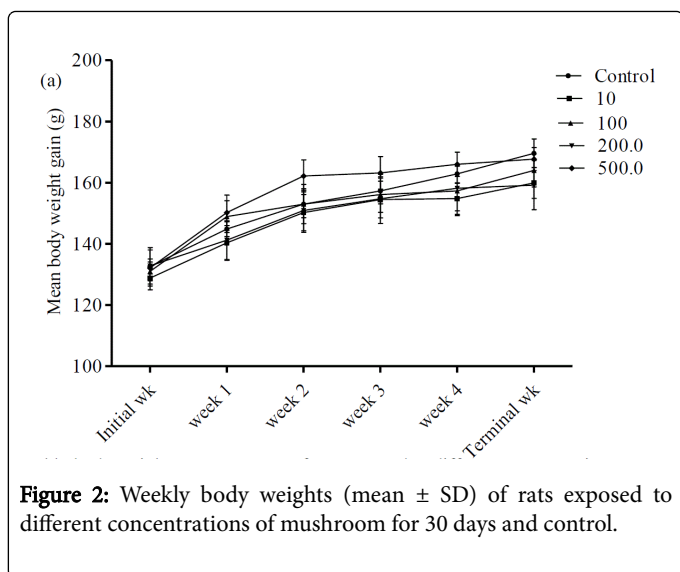


Figure 2: Weekly body weights (mean \pm SD) of rats exposed to different concentrations of mushroom for 30 days and control.

Conc. (mg/L)	% Body weight	ALW (g)	RLW (g)	AKW (g)	RKW (g)
Control	27.9	5.40 \pm 0.34	3.18 \pm 0.11	0.98 \pm 0.10	0.58 \pm 0.03
10	24.15	5.28 \pm 0.19	3.30 \pm 0.06	0.80 \pm 0.05	0.50 \pm 0.10
100	25.19	5.18 \pm 0.24	3.16 \pm 0.13	0.80 \pm 0.03	0.49 \pm 0.02
200	19.88	5.00 \pm 0.34	3.14 \pm 0.76	0.80 \pm 0.06	0.50 \pm 0.09
500	26.95	4.98 \pm 0.25	2.97 \pm 0.38	0.78 \pm 0.06	0.47 \pm 0.07
-	-	p=0.7931	p=0.6813	p=0.2165	p=0.2017

Table 2: Percentage body weight gain, absolute and relative liver and kidney weight gain in rats fed with mushroom cultivated in Pb contaminated rice straw for 30 days. Values are in mean \pm SD. ALW-Absolute liver weight (g), RLW-Relative liver weight (g). AKW-Absolute kidney weight (g), RKW-Relative kidney weight (g).

Haematotoxic effects of Pb accumulated mushroom in rats

Table 3 shows the results of alterations in haematological indices of rats fed with aqueous extract of Pb contaminated *P. pulmonarius* for 30 days. There was insignificant decrease in RBC ($p=0.3411$), HCT ($p=0.5045$) and HGB ($p=0.4066$), but WBC ($p=0.0520$) and PLT ($p=0.0513$) of the treated rats marginally decreased compared to the control.

There was significant increase in acanthocytes ($p<0.001$; crenated red blood cells), schizocytes ($p<0.001$; fragmented red blood cells), target cells or codocytes ($p<0.001$; Heinz bodies resembling bull eyes), but insignificant increase in tear drops ($p=0.1357$; red blood cells with

spindle or sickle shape) in rats fed with aqueous solution of Pb contaminated *P. pulmonarius* compared to the control (Figure 3). The various erythrocytes morphologies scored in the treated and control rats are presented in Figure 4.

Conc. (mg/L)	RBC ($\times 10^6 \mu\text{L}$)	HCT (%)	HGB (g/dL)	PLT ($\times 10^6 \mu\text{L}$)	WBC ($\times 10^3 \mu\text{L}$)
Control	6.88 \pm 0.12	40.40 \pm 0.75	13.86 \pm 0.29	129.0 \pm 132.7	68.00 \pm 8.09
1	6.70 \pm 0.35	39.80 \pm 1.83	13.70 \pm 0.59	96.8 \pm 106.7*	54.30 \pm 4.72
10	6.82 \pm 0.02	39.60 \pm 1.50	13.52 \pm 0.39	124.6 \pm 170.8	54.00 \pm 2.65
100	6.30 \pm 0.19	37.37 \pm 1.02	12.76 \pm 0.41	110.6 \pm 142.6	64.00 \pm 7.45
200	6.59 \pm 0.04	37.80 \pm 1.11	13.04 \pm 0.26	119.2 \pm 240.3	6.50 \pm 3.84*
500	($p=0.3411$)	($p=0.5045$)	($p=0.4066$)	($p=0.0513$)	($p=0.0520$)

Table 3: Hematological profile of rats fed with mushroom cultivated in Pb contaminated rice straw for 30 days. End points represent mean \pm SD for 5 rats. RBC (Red blood cell count); HGB (Hemoglobin concentration); HCT (Percentage Hematocrit); PLT (platelets); WBC (White blood cell count); Superscripts differ significantly ($*p<0.05$) from the control using Dunnett's multiple post hoc test.

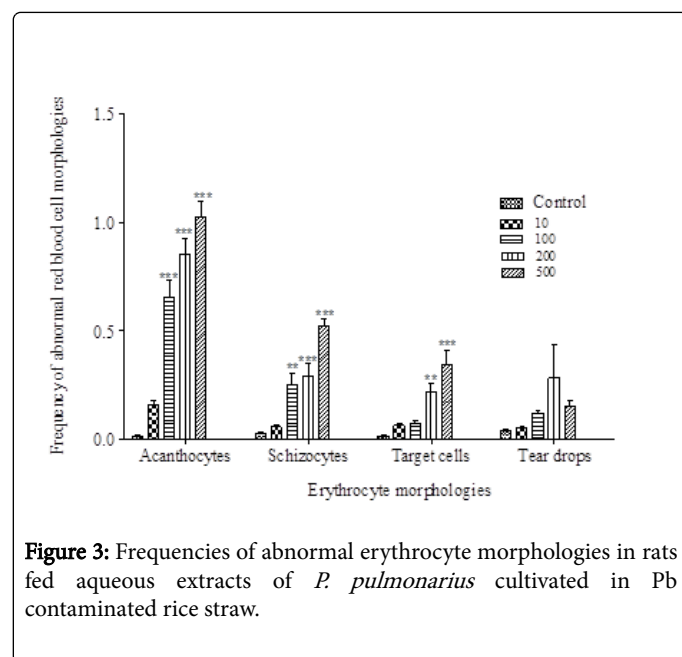


Figure 3: Frequencies of abnormal erythrocyte morphologies in rats fed aqueous extracts of *P. pulmonarius* cultivated in Pb contaminated rice straw.

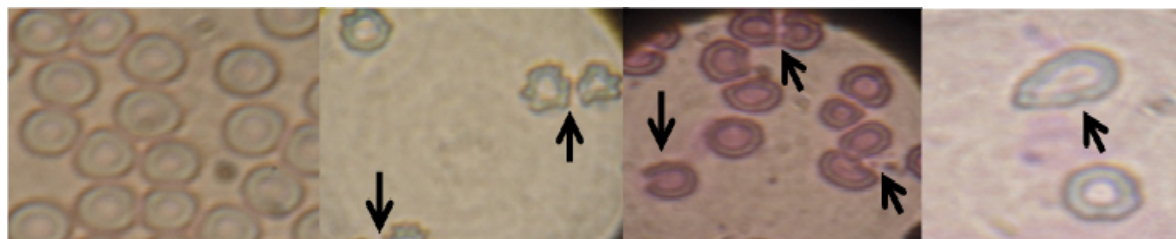


Figure 4: Abnormal erythrocyte morphologies (arrowed) observed in rats fed aqueous extracts of *P. pulmonarius* cultivated in Pb contaminated rice straw (a) normal erythrocytes from the control rats (b) acanthocytes (crenated): cells with shrink cell membranes (c) schizocytes (fragmented red blood cells) (d) tear drops (RBCs with spindle shape).

Discussion

There are increasing reports that macromycetes (both wild and cultured) species are hyperaccumulators of heavy metals. Researchers have concentrated efforts in harnessing this unique property of the mushrooms in cleaning up contaminated environment without considering health risk associated with the possibility of consuming such mushrooms [9,31,32]. Concentration dependent significant Pb accumulation in *P. pulmonarius* cultivated in Pb contaminated rice straw suggests that chitin, chitosan, glucan and amino polysaccharide present in the cell wall readily absorb Pb and passed it to the fruit bodies. Pb primarily binds to the amine-N of chitin which acts as the nucleation site for the absorption of this metal into the mushrooms [33,34]. This assertion is supported by the report that Cd accumulation in *Neurospora crassa* was via N-acetylglucosamine polymer and chitin present in the fungal cell wall [35]. Furthermore, these biological molecules in the cell wall were isolated from a white rot fungal species (*Coriolopsis polyzona*) in an attempt to understand their role in bioaccumulation. They were used as biocatalyst and succeeded in removing endocrine disrupting chemicals, nonylphenol, bisphenol A and personal care product ingredient, triclosan, from contaminated substrates [24]. The finding that *P. pulmonarius* cultivated on 1000 mg/L of the Pb contaminated rice straw did not germinate suggests that the Pb concentration was toxic to the biological molecules which possibly led to denaturation and cell death [36]. Pb accumulation in *P. pulmonarius* herein is consistent with Kumhomkul and Panich-pat [37] report that straw mushroom (*Volvariella volvacea*) cultivated on lead contaminated substrate similarly bioaccumulated Pb into its fruit bodies.

Collection and consumption of wild mushrooms which are traditionally social outing in most countries in Europe, Asia, and the United States [38], constitute major source of food and ingredients for traditional medicine in African [39]. Pb accumulation in *P. pulmonarius* cultivated at higher concentrations of the Pb contaminated straw exceeded the maximum standards (0.3 mg/kg wet weight for Pb in cultivated fungi) established for food contaminants by FAO/WHO [40]. Rats fed aqueous extract of *P. pulmonarius* accumulated Pb had increased Pb bioaccumulation in the kidney and liver. This was higher and exhibited concentration dependent increase in the kidney. Higher concentration of the Pb in the kidney may be attributed to the presence of divalent metal transporter 1 (DMT-1) which transported the Pb from the gastrointestinal tract to renal tissue of the treated rats [41,42]. It is also possible that Pb when in the blood formed conjugation with cysteine or histidine and was transported to the proximal tubule via sodium amino acid cotransporter [43]. Toxic metals (including Pb^{2+}) in mammalian systems are potent inducers of

metallothioneins and glutathione in the renal and liver tissues. These peptides protect against heavy metal toxicity by trapping the metal inside the cells; this may account for the bioaccumulation of Pb in the organs [44,45]. However, due to regular renewal of the hepatocytes during intoxication in the liver, the Pb^{2+} were released from the metallothioneins and glutathione conjugates back into the systemic circulation and are subsequently sent to the kidney [46]. This possibly resulted in the higher bioaccumulation of Pb in the kidney than the liver of the treated rats. Increase BAF of Pb^{2+} in the kidney of treated rats corroborated the higher Pb bioaccumulation in the kidney. Since the BAF value of Pb in the liver was less than 1 for virtually all the concentrations of the Pb contaminated *P. pulmonarius* treated rats except 10 mg/L, it is described as transferred factor (TF) [47]. The body burden of bioaccumulated Pb in the mushroom induced decrease terminal body weight and decrease absolute and relative kidney and liver weight gain in the treated rats. This suggests that the accumulated Pb affected the organ weights in the course of Pb sequestration by the organs [48]. This is in agreement with the report that heavy metal bioaccumulation in the mammalian liver and kidney altered the absolute and relative liver and kidney weight [49].

Haematological testing in rodents during toxicity evaluations is generally acknowledged as part of safety assessment of chemicals [27]. It serves as sensitive predictors for effects in humans; since both are mammals with similarities in their kinetics, metabolic profile and dynamics [50]. Also changes in haematological indices have been associated with haematopathology, physiological and immunological changes [51]. Decrease erythrocytes (RBC), haemoglobin (Hb), haematocrits (Hct), platelet and total white blood cell counts (although statistically insignificant) compared to the control presents haematotoxic effects of the absorbed Pb on the blood indices possibly due to interference with the haemopoietic system and or heme synthetic pathway. This assertion follows the reports that Pb targets heme synthetic pathway which leads to the inhibition of heme and hemoglobin synthesis [52] and may cause damage to the hemopoietic system [53]. Decrease RBC, platelet counts, percentage hematocrit and hemoglobin concentration has been reported as indicator of anemia, stress disorder, failure in oxygen carrying capacities of red blood cells and poor health status due to exposure to toxic metals [54-56]. Quantitative investigation of total white blood cells (nonspecific immune cells) forms basic screening usually included in immunotoxic studies [57]. WBCs are useful in signaling clinically relevant haematologic changes that may result in clinical identifiable autoimmune disorders and various forms of leukemia [58]. The significant decrease in total leucocyte count observed in the treated rats may be related to suppression or inhibitory mechanisms in the

production process during haemopoiesis and may lead to immunosuppression in treated rats.

Altered erythrocyte morphologies in the treated rats corroborated the observed decreased haematological indices. When absorbed from the gastrointestinal tract, plasma Pb^{2+} is formed as non-diffusible (protein-bound) and diffusible (complexed and ionized) forms. Either of these forms is capable of inducing disturbances in the osmoregulatory system of the blood cells [59] and/or oxidative injury to the cell membrane [60]. This may enhance leakage or denaturation of hemoglobin [61], which produced the abnormal erythrocyte morphologies in the treated rats. It is possible that the Pb^{2+} generated free radicals and lipid peroxidation (LPO) which induced different shapes of the vulnerable erythrocytes [62,63], via decreased membrane fluidity, increased membrane permeability, inactivation of membrane-bound enzymes, and loss of essential fatty acids alterations in the structure and functions of the cell membrane [64]. Pb is also capable of altering the properties of erythrocyte membranes directly by rendering them more fragile and permeable, hence may result in cell swelling, deformation and damage [53]. This may account for the different abnormal erythrocytes observed in the treated rats compared to the control.

Pleurotus pulmonarius cultivated in Pb contaminated rice straw accumulated Pb into its fruit bodies in a concentration dependent manner. Rats fed aqueous extracts of this mushroom significantly bioaccumulated Pb in its kidney and liver with high bioaccumulation factor in the kidney. The accumulated Pb possibly induced decrease body and organ weights, alterations in hematological indices and abnormal red blood cell morphology. Lead poisoning recognized as a major public health issue, mostly in developing countries, can be increased through the consumption of Pb contaminated plants most importantly mushrooms.

References

1. International Agency for Research on Cancer (IARC) (2006) Inorganic and organic lead compounds. IARC monographs on the evaluation of carcinogenic risks to humans, Lyon.
2. World Health Organisation (WHO) (1990) Diet, nutrition and the prevention of chronic diseases. WHO Technical Report Ser, pp: 1-102.
3. Harada M (1995) Minamata disease: methylmercury poisoning in Japan caused by environmental pollution. Critical Reviews in Toxicology 25: 1-24.
4. Manzi P, Aguzzi A, Pizzoferrato L (2001) Nutritional value of mushrooms widely consumed in Italy. Food Chemistry 73: 321-325.
5. Dundar A, Acay H, Yildiz A (2008) Yield performances and nutritional contents of three oyster mushroom species cultivated on wheat stalk. African Journal of Biotechnology 7: 3497-3501.
6. Ita BN, Essien JP, Ebong GA (2006) Heavy metal levels in fruiting bodies of edible and non-edible mushrooms from the Niger Delta Region of Nigeria. Journal of Agriculture and Society Science 2: 84-87.
7. Garcia MA, Alonso J, Fernandez MI, Melgar MJ (1998) Lead content in edible wild mushrooms in NW Spain as biomarker in ecotoxicology. Archives of Environmental Contamination and Toxicology 34: 330-335.
8. Isildak O, Turkekel I, Elmastas M, Tuzen M (2004) Analysis of heavy metals in some wild-grown edible mushrooms from the middle black sea region, Turkey. Food Chemistry 86: 547-552.
9. Adenipekun CO, Ayanleye OO, Oyetunji OJ (2013) Bioremediation of soil contaminated by spent diesel oil using *Pleurotus pulmonarius* Fries (Quelet) and its effects on the growth of *Corchorus olitorius* (L). Journal of Applied Biosciences 68: 5366-5373.
10. Chen CY, Stemberger RS, Klau B, Blum JD, Pickhardt PC, et al. (2000) Accumulation of heavy metals in food web components across a gradient of lakes. Limnology and Oceanography 45: 1525-1536.
11. Drewnowska M, Jarzynska G, Kojta AK, Falandysz J (2012) Mercury in European Blushers, *Amanita rubescens*, mushrooms and topsoils: Bioconcentration potential and intake assessment. Journal of Environmental Science and Health 47: 466-474.
12. Gawlikowski T, Romek M, Satora L (2014) Edible mushroom-related poisoning: A study on circumstances of mushroom collection, transport, and storage. Human and Experimental Toxicology 34: 718-724.
13. Colak S, Kandis H, Afacan MA, Erdogan MO, Gunes H, et al. (2014) Assessment of patients who presented to the emergency department with mushroom poisoning. Human and Experimental Toxicology 37: 725-731.
14. Turkekel I, Elmastaş M, Tuzen M (2004) Determination of iron, copper, manganese, zinc, lead and cadmium in mushrooms samples from Tokat. Food Chemistry 84: 389-392.
15. Yamaç M, Yıldız D, Sarıkürkçü C, Çelikkollu M, Solak MH (2007) Heavy metals in some edible mushrooms from the Central Anatolia, Turkey. Food Chemistry 103: 263-267.
16. Nnorom IC, Jarzyńska G, Falandysz J, Drewnowska M, Okoye I, et al. (2012) Occurrence and accumulation of mercury in two species of wild grown *Pleurotus* mushrooms from Southeastern Nigeria. Ecotoxicology and Environmental Safety 84:78-83.
17. Agency for Toxic Substances and Disease Registry (ATSDR) (1998) Toxicological profile for lead. Atlanta, GA: US Department of Health and Human Services.
18. Al-Hakkak ZS, Hamamy HA, Murad AM, Hussain AF (1986) Chromosome aberrations in workers at a storage battery plant in Iraq. Mutat Res 171: 53-60.
19. Jitrapun P, Pichan S, Chompusakdi P, Duangduen S, Sastri S, et al. (2007) Health risk assessment of villagers who live near a lead mining area: a case study of Klity village, Kanchanaburi Province, Thailand. Southeast Asian J Trop Med Public Health 38: 168-177.
20. Medecins Sans Frontieres (MSF) (2012) Lead poisoning crisis in Zamfara State Northern, Nigeria. MSF briefing paper, pp: 1-4.
21. Kalac P (2010) Trace element contents in European species of wild growing edible mushrooms: a review for the period 2000–2009. Food Chemistry 122: 2-15.
22. Adenipekun CO, Lawal Y (2012) Mycoremediation of crude oil and palm kernel contaminated soils by *Pleurotus pulmonarius* Fries (Quelet). Nature and Science 9: 125-131.
23. Kim YK, Park SK, Kim SD (2003) Treatment of landfill leachate by white rot fungus in combination with zeolite filters. J Environ Sci Health A Tox Hazard Subst Environ Eng 38: 671-683.
24. Cabana H, Jiwan JH, Rozenberg R, Elisashvili V, Penninckxe M, et al. (2007) Elimination of endocrine disrupting chemicals nonylphenol and bisphenol A and personal care product ingredient, triclosan using enzyme preparation from the white rot fungus, *Coriolopsis polyzona*. Chemosphere 67: 770-778.
25. Sabiu S, Ajani EO, Abubakar AA, Sulyman AO, Nurain OI, et al. (2015) Toxicological evaluations of *Stigma maydis* (corn silk) aqueous extract on hematological and lipid parameters in Wistar rats. Toxicology Reports 2: 638-644.
26. Gad SC (2007) Animal models in toxicology (2nd edn.). CRC Press, Taylor & Francis Group 6000 Broken Sound Parkway NW, Suite 300, Boca Raton, pp: 151-217.
27. Brown G (1992) Hematological tests in toxicology: time for a re-think? Comprehensive Hematology International 2: 231-235.
28. Cheesbrough M (2005) District Laboratory practice in tropical countries: Haematological test (2nd edn). Cambridge Low Price Editions, pp: 263-347.
29. Gregory GP, Rajotte JW, Couture P (2005) Effects of industrial metals on wild fish populations along a metal contaminated gradient. Ecotoxicol Environ Saf 61: 287-312.

30. Holwerda DA (1991) Cadmium kinetics in freshwater calms. Cadmium-copper interaction in metal accumulation by *Anodonta cygnea* and characterization of metal binding protein. Archives of Environmental Contamination and Toxicology 21: 432-437.
31. Stijve T, Besson R (1976) Mercury, cadmium, lead and selenium content of mushroom species belonging to the genus *Agaricus*. Chemosphere 7: 151-158.
32. Jarzynska G, Gucia M, Kojta A, Rezulak K, Falandysz J, et al. (2011) Profile of trace elements in Parasol Mushroom (*Macrolepiota procera*) from Tucholskie Forests. J Environ Sci Health B 46: 741-751.
33. Zhang L, Zhao L, Yu Y, Chen C (1998) Removal of lead from aqueous solution by non-living *Rhizopus nigricans*. Water Research 32: 1437-1444.
34. Gabriel J, Baldrian P, Hladikova K, Hakova M (2001) Copper sorption by native and modified pellets of wood-rotting basidiomycetes. Letter and Applied Microbiology 32: 194-198.
35. Bhanoori M, Venkateswerlu G (2000) In vivo chitin-cadmium complexation in cell wall of *Neurospora crassa*. Biochim Biophys Acta 1523: 21-28.
36. Luoma SN, Rainbow PS (2005) Why is metal bioaccumulation so variable? Biodynamics as a unifying concept. Environmental Science and Technology 39: 1921-1931.
37. Kumhomkul T, Panich-pat T (2013) Lead accumulation in the straw mushroom, *Volvariella volvacea*, from lead contaminated rice straw and stubble. Bull Environ Contam Toxicol 91: 231-234.
38. Karlson-Stiber C, Persson H (2003) Cytotoxic fungi: an overview. Toxicon 42: 330-339.
39. Alemu F (2014) Cultivation of *Pleurotus ostreatus* on *Grevillea robusta* leaves at Dilla University, Ethiopia. Journal of Yeast and Fungal Research 5: 74-83.
40. FAO/WHO Standards (1976) List of maximum levels recommended for contaminants by the Joint FAO/WHO Codex Alimentarius Commission, Second Series. CACIFAL Rome 3: 1-8.
41. Kalac P, Svoboda L (2000) A review of trace element concentrations in edible mushrooms. Food Chemistry 69: 273-281.
42. Ferguson CJ, Wareing M, Ward DT, Green R, Smith CP, et al. (2001) Cellular localization of divalent metal transporter DMT-1 in rat kidney. American Journal of Physiology and Renal Physiology 280: F803-F814.
43. Gachot B, Tauc M, Morat L, Poujeol P (1991) Zinc uptake by proximal cells isolated from rabbit kidney: effects of cysteine and histidine. Pflugers Archives 419: 583-587.
44. Klaassen CD, Liu J, Choudhuri S (1999) Metallothionein: an intracellular protein to protect against cadmium toxicity. Annu Rev Pharmacol Toxicol 39: 267-294.
45. Zalups RK (2000) Molecular interactions with mercury in the kidney. Pharmacol Rev 52: 113-143.
46. Thevenod F (2003) Nephrotoxicity and proximal tubule. Insights from cadmium. Nephron Physiol 93: 87-93.
47. Biuki NA, Savari A, Mortazavi M, Zolgharnein H, Salamat N, et al. (2011) Accumulation and elimination of cadmium and lead in Juvenile milkfish during sublethal exposure. Toxicology and Environmental Chemistry 93: 2022-2033.
48. Olivier B, Gregory J, Michel T, Marc C (2005) Effect of heavy metals on, and handling by, the kidney. Nephron Physiology 99: 105-110.
49. Sanchez-Chardi A, Penarroja-Matutano C, Ribeiro CAO, Nadal J (2007) Bioaccumulation of metals and effects of a landfill in small mammals. Part II. The wood mouse, *Apodemus sylvaticus*. Chemosphere 70: 101-109.
50. Weissinger J (1992) Clinical pathology testing in preclinical safety assessment: regulatory concerns. Toxicological Pathology 20: 509-514.
51. Evans GO (2008) Animal haematotoxicology: A practical guide for toxicologists and biomedical researchers. CRC press, pp: 14-78.
52. Flora SJS, Mittal M, Mehta A (2008) Heavy metal induced oxidative stress and its possible reversal by chelation therapy. Indian J Med Res 128: 501-523.
53. Vij AG (2009) Haemopoietic, haemostatic and mutagenic effects of lead and possible prevention by zinc and vitamin C. Al Ameen Journal of Medical Sciences 2: 27-36.
54. Malhotra OP, Srivastava DK (1979) Cadmium induced changes in lipid peroxidation, blood hematology and biochemical parameters of male rats. Biochemical and Biophysical Acta 526: 1-12.
55. Larsson A, Haux C, Sjobeck M (1985) Fish physiology and metal pollution: results and experiences from laboratory and field studies. Ecotoxicol Environ Saf 9: 250-281.
56. Mahour K, Saxena PN (2009) Assessment of haematotoxic potential of mercuric chloride in rat. J Environ Biol 30: 927-928.
57. Tryphonas H (2001) Approaches to detecting immunotoxic effects of environmental contaminants in human. Environmental Health Perspective 109: 877-884.
58. Lee GR, Forster J, Lukens J, Paraskevas F, Greer JB, et al. (1999) Wintrobe's Clinical Hematology. (10th edn.). Hematologic Malignancies, Baltimore, MD: Williams and Wilkins.
59. Shaw BP, Dash S, Panigrahi AK (1991) Effect of methyl mercuric chloride treatment on haematological characteristics and erythrocyte morphology of Swiss mice. Environ Pollut 73: 43-52.
60. Christopher MM (2004) Interpretation of red blood cell morphology. 29th World congress of the world small animal Veterinary Association. Rhodes Greece, pp: 1-16.
61. Everse J, Hsia N (1997) The toxicities of native and modified hemoglobin. Free Radic Biol Med 22: 1075-1099.
62. Eritsland J (2000) Safety considerations of polyunsaturated fatty acids. Am J Clin Nutr 71: 197S-201S.
63. Jadhav SN, Sarkar SN, Aggarwal M, Tripathi HC (2007) Induction of oxidative stress in erythrocytes of male rats subchronically exposed to a mixture of eight metals found as groundwater contaminants in different parts of India. Arch Environ Contam Toxicol 52: 145-151.
64. van Ginkel G, Sevanian A (1994) Lipid peroxidation induced membrane structural alterations. Methods Enzymol 233: 273-288.