

Sulfonylureas (Not Metformin) Improve Survival for Patients with Diabetes and Resectable Pancreatic Adenocarcinoma

Paul Toomey, Anthony Teta, Krishen Patel, Kenneth Luberic, Sharona Ross and Alexander Rosemurgy*

Department of Surgery, Florida Hospital Tampa, Tampa, Florida, USA

*Corresponding author: Alexander Rosemurgy, Department of Surgery, Florida Hospital Tampa, 3000 Medical Park Drive, Suite 310 Florida, USA, Tel: +8136157030; Fax: +8136158350; E-mail: arosemurgy@hotmail.com

Rec date: Jun 08, 2015; Acc date: Jul 03, 2015; Pub date: July 07, 2015

Copyright: © 2015 Toomey P. This is an open-access article distributed under the terms of the Creative Commons Attribution License, which permits unrestricted use, distribution, and reproduction in any medium, provided the original author and source are credited.

Abstract

Objective: Patients with pancreatic adenocarcinoma have an increased propensity for diabetes. Recent studies suggest patients with diabetes and pancreatic adenocarcinoma treated with metformin have increased survival. This study was undertaken to determine if metformin use is associated with increased survival for patients with pancreatic adenocarcinoma.

Methods: Patients who underwent pancreaticoduodenectomy for pancreatic adenocarcinoma from 1991-2013 were included in this study. Survival was evaluated by Kaplan-Meier analysis. Median data are reported. Significance was accepted with 95% probability.

Results: Out of 414 patients undergoing pancreaticoduodenectomy for pancreatic adenocarcinoma, 132 (32%) was diabetic. Of diabetic patients, 35 (27%) were diet-controlled, 34 (26%) were treated with insulin alone, 18 (14%) were treated with metformin alone, 14 (10%) were treated with sulfonylureas alone, 7 (5%) were taking sulfonylureas with insulin, and 24 (18%) patients were taking metformin with sulfonylureas and/or insulin. Patients with or without diabetes not taking sulfonylureas had survival of 16.4 months compared to patients taking sulfonylureas who achieved survival of 27.5 months after undergoing pancreaticoduodenectomy ($p < 0.05$).

Conclusion: Patients taking sulfonylureas with or without other therapy had improved survival compared to patients not taking sulfonylureas after pancreaticoduodenectomy. Metformin does not appear to be beneficial for patients with resectable disease, but may have a benefit for patients with unresectable and/or metastatic disease as shown in prior studies. The use of sulfonylureas is associated with a survival benefit for patients undergoing resection for pancreatic adenocarcinoma. Tumor staging and margin status continue to be the overriding predictors of survival for patients with resectable pancreatic adenocarcinoma, not metformin therapy.

Keywords: Metformin; Pancreatic adenocarcinoma; Diabetes; Pancreaticoduodenectomy

Introduction

The impact of medical management of type II diabetes mellitus is of great interest given its inextricable relationship with pancreatic cancer. Pancreatic cancer is the fourth leading cause of cancer death in the United States and has the highest fatality rate worldwide with the overwhelming majority (~80%) having locally advanced and/or metastatic disease [1-5]. It is well known that obesity has become an epidemic in the United States and is a major risk factor to type II diabetes mellitus [6,7]. Both obesity and diabetes have been shown to increase the risk of pancreatic cancer.

Gemcitabine has become the standard of care chemotherapeutic agent for pancreatic adenocarcinoma, but the survival benefit for patients treated with Gemcitabine in the neoadjuvant and adjuvant setting is dismal [8-11]. Complete tumor resection for pancreatic cancer is the only hope for cure and has shown to significantly improve survival particularly when achieving an R0 margin [12]. Medical management for pancreatic cancer is limited; however, medical therapy for type II diabetes is well established [13,14].

Metformin was FDA approved in 1996 for the management of type II diabetes. Metformin targets the predominant feature of type II diabetes (i.e., insulin resistance) by increasing the sensitivity of insulin. More recently, metformin has been correlated with improved survival for patients with pancreatic adenocarcinoma and has proven to inhibit pancreatic cancer cell and tumor growth [15,16]. Survival for patients who underwent pancreaticoduodenectomy for pancreatic adenocarcinoma is detailed herein. This study was undertaken to determine if patients undergoing resection for pancreatic adenocarcinoma who are taking metformin have improved survival. In undertaking this study, we hypothesized that patients taking metformin who undergo resection for pancreatic adenocarcinoma will have increased survival compared to patients with pancreatic adenocarcinoma who are not taking metformin.

Methods

Patients were entered into a secure database with Institutional Review Board (IRB) after patient informed consent. All patients undergoing an intended pancreaticoduodenectomy for pancreatic adenocarcinoma were evaluated from 1991-2013. After discharge, patients were prospectively followed.

Data were stored in Microsoft Excel (Microsoft Corp, Redmond, WA, USA) files. Statistical analysis utilized Graphpad Instat version 3.06 and Graphpad Prism 5 (Graphpad Software Inc., San Diego, CA, USA). Comparisons were undertaken using Mann-Whitney U-test or chi-squared test, and for contingency testing, Fisher's Exact test was utilized for summing small p-values, where appropriate. Survival curve analyses were also undertaken on Graphpad Prism 5, which permitted

the log-rank and Wilcoxon tests on the Kaplan-Meier survival curves. When appropriate, data are presented as median, mean ± standard deviation for illustrative purposes. Significance was accepted with 95% probability. The multiple combinations of medical therapy for their diabetes were stratified by R status, TNM score, AJCC stage, and survival for patients (Table 1).

	Diet Controlled	Metformin	Metformin + Sulfonylurea	Insulin	Sulfonylurea + Insulin	Metformin + Insulin	Metformin + Sulfonylurea
Number of Patients	35	18	3	14	34	7	16
R status (R0/R1)	30 (88%) 5 (12%)	12 (67%) 6 (33%)	2 (67%) 1 (33%)	13 (93%) 1 (7%)	25 (74%) 9 (36%)	6 (86%) 1 (14%)	14 (88%) 2 (12%)
T-Criteria							
T1	1 (3%)	1 (5%)	0 (0%)	1 (7%)	0 (0%)	0 (0%)	0 (0%)
T2	10 (29%)	3 (17%)	0 (0%)	3 (21%)	6 (18%)	0 (0%)	5 (31%)
T3	22 (62%)	13 (73%)	3 (100%)	10 (72%)	27 (79%)	7 (100%)	11 (69%)
T4	2 (6%)	1 (5%)	0 (0%)	0 (0%)	1 (3%)	0 (0%)	0 (0%)
N-Criteria							
N0	14 (40%)	6 (33%)	2 (67%)	6 (43%)	12 (35%)	2 (29%)	8 (50%)
N1	21 (60%)	12 (67%)	1 (33%)	8 (57%)	22 (65%)	5 (71%)	8 (50%)
AJCC Staging							
IA	1 (3%)	1 (5%)	0 (0%)	1 (7%)	0 (0%)	0 (0%)	0 (0%)
IB	7 (20%)	2 (11%)	0 (0%)	2 (14%)	1 (3%)	0 (0%)	4 (25%)
IIA	6 (17%)	3 (17%)	2 (67%)	3 (21%)	11 (32%)	3 (43%)	4 (25%)
IIB	19 (54%)	11 (62%)	1 (33%)	8 (56%)	20 (59%)	4 (57%)	7 (44%)
III	2 (6%)	1 (5%)	0 (0%)	0 (0%)	0 (0%)	0 (0%)	0 (0%)
IV	0 (0%)	0 (0%)	0 (0%)	0 (0%)	2 (6%)	0 (0%)	1 (6%)
Survival (Months)	14 (27±28)	14 (23±35)	11 (12±2)	20 (21±16)	13 (13±8)	28 (37±22)	11 (11±8)

Table 1: Individualized diabetes treatment stratified by R status, T-criteria, N-criteria, AJCC stage, and survival. Where appropriate, data are presented as median (mean ± SD).

Results

Pancreaticoduodenectomy was undertaken for 414 patients (184 men) with pancreatic adenocarcinoma with a median age of 68. One hundred and thirty-two (32%) patients had diabetes: 35 (27%) patients were diet-controlled, 18 (14%) were treated with metformin alone, 24 (18%) were treated with metformin in addition to insulin and or insulin-secretagogues (i.e. sulfonylureas), and 55 (42%) were treated with sulfonylureas and or insulin alone (Table 1). T-criteria, N-criteria and margin status were not significantly different for patients taking metformin when compared to patients taking sulfonylureas and/or insulin without metformin (Table 2). T-criteria, N-criteria and margin status did not differ for patients with diabetes who were taking sulfonylureas compared to patients not taking sulfonylureas (Table 3).

	Metformin (n=32 patients)	Sulfonylureas/Insulin (n=55 patients)	p-value
T-Criteria			
T1	2 (6%)	1 (2%)	0.69
T2	5 (16%)	9 (16%)	
T3	23 (72%)	44 (80%)	
T4	2 (6%)	1 (2%)	
N-Criteria			
N0	11 (33%)	20 (36%)	0.82

N1	21 (67%)	35 (64%)	
Margin Status			
R0	32 (76%)	44(80%)	0.79
R1	10 (24%)	11(20%)	

Table 2: Patients with diabetes taking metformin (n=32) did not have significantly different T-stage, N-stage or margin status, when compared to patients taking sulfonylureas and/or insulin without metformin (n=55).

	Sulfonylureas (Diabetic; n=patients)	No Sulfonylureas (Diabetic; n=patients)	p-value	No Sulfonylureas (All Patients; n=patients)	p-value
T-Criteria					
T1	1	2	0.19	23	0.46
T2	8	19		75	
T3	31	37		297	
T4	0	4		18	
N-Criteria					
N0	18	32	0.33	152	0.39
N1	22	60		262	
Margin Status					
R0	35	71	0.24	326	0.28
R1	5	21		87	

Table 3: Patients taking sulfonylureas did not have significantly different T-criteria, N-criteria or margin status, when compared to patients with diabetes not taking sulfonylureas or patients with or without diabetes not taking sulfonylureas.

Survival for patients with diabetes did not differ from patients without diabetes (Figure 1).

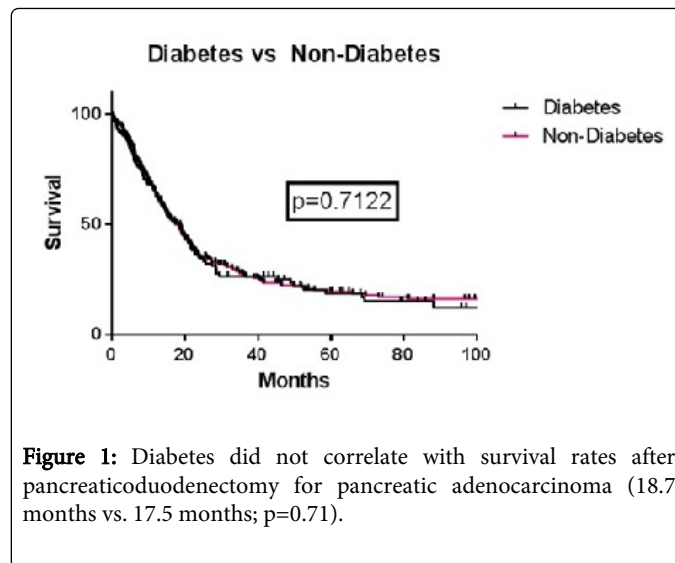


Figure 1: Diabetes did not correlate with survival rates after pancreaticoduodenectomy for pancreatic adenocarcinoma (18.7 months vs. 17.5 months; p=0.71).

Patients with diabetes treated with metformin did not have improved survival compared to patients with diabetes not treated with metformin (Figure 2).

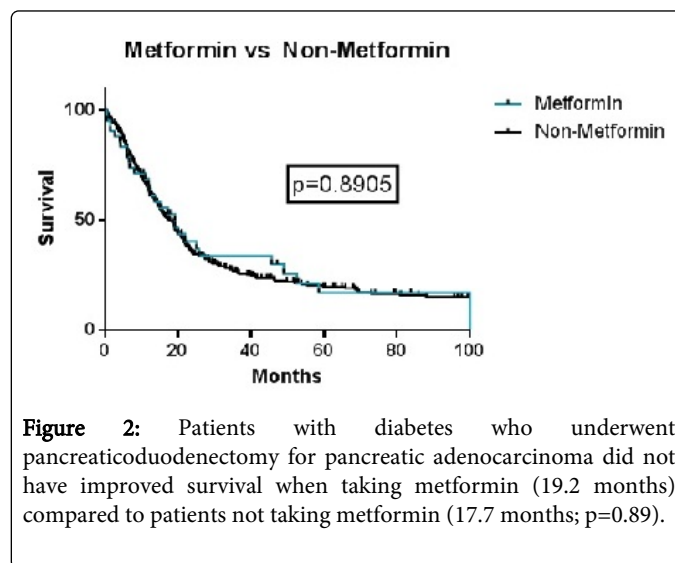
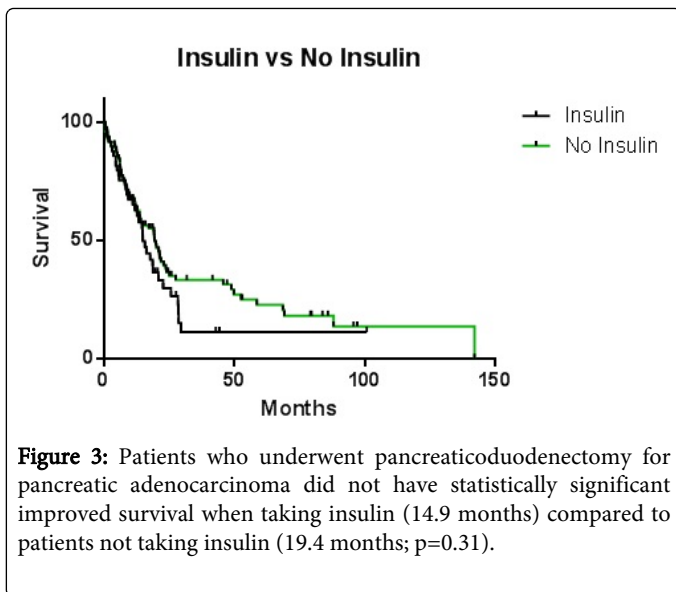
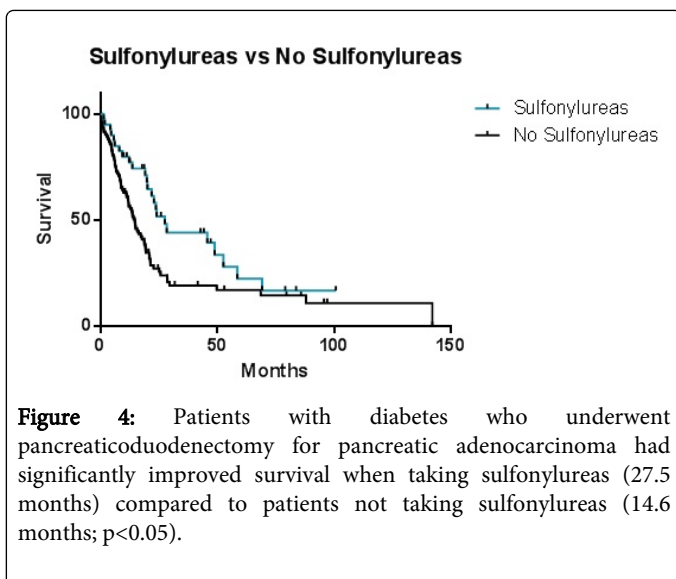


Figure 2: Patients with diabetes who underwent pancreaticoduodenectomy for pancreatic adenocarcinoma did not have improved survival when taking metformin (19.2 months) compared to patients not taking metformin (17.7 months; p=0.89).

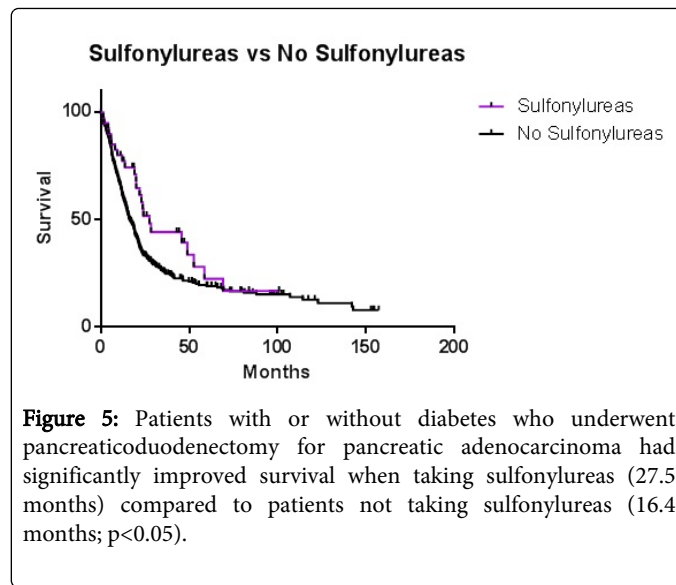
The impact of insulin was not significant when compared to patients with diabetes not taking insulin (Figure 3).



Patients with diabetes who underwent pancreaticoduodenectomy for pancreatic adenocarcinoma treated with sulfonylureas had improved survival compared to patients not treated with sulfonylureas (27.5 months vs. 14.6 months; $p<0.05$) (Figure 4).



Patients who underwent pancreaticoduodenectomy for pancreatic adenocarcinoma with or without diabetes treated with sulfonylureas had significantly improved survival compared to patients not treated with sulfonylureas (27.5 months vs. 16.4 months; $p<0.05$) (Figure 5).



Discussion

This study was undertaken to evaluate the potentially beneficial effect of metformin on survival for patients with resectable pancreatic adenocarcinoma. In undertaking this study, we concluded that patients who undergo pancreaticoduodenectomy for pancreatic adenocarcinoma who are taking sulfonylureas with or without other therapy have improved survival compared to patients not taking sulfonylureas. Metformin does not appear to be beneficial for patients with resectable disease, but may have a benefit for patients with unresectable and/or metastatic disease as prior studies showing survival benefits with metformin had patients with advanced disease. The patients in this series all underwent pancreaticoduodenectomy for resectable pancreatic adenocarcinoma. Our patient population was gender-balanced with a distribution being nearly equal. The age of patients was similar to that reported in other series. The majority of patients did not have diabetes and the majority of patients with diabetes were treated with sulfonylureas/insulin alone. Diabetes was not an independent predictor of survival.

Recently, with the availability of long-term data, the use of metformin for patients with diabetes has been found to be associated with a decreased risk for any cancer [17]. Furthermore, metformin is correlated with improved survival for patients with pancreatic adenocarcinoma; however, the vast majority of these patients studied have metastatic or locally advanced pancreatic cancer, which precluded resection [16]. Contradictory to the aforementioned study, our study shows there is no survival benefit for patients with diabetes taking metformin who underwent resection for pancreatic adenocarcinoma. Prior studies have shown that metformin use not only has a beneficial effect, but that sulfonylureas and/or insulin have a detrimental effect [18]. Therefore, in the early portions of our study, we grouped patients treated with sulfonylureas and/or insulin, as sulfonylureas have been postulated to impart the same risk as insulin since sulfonylureas are insulin-secretagogues [7,19]. When comparing patients without diabetes who have pancreatic cancer compared to patients with short-term (<2 years) or long-term (>2 years) diabetes, neither tumor size nor tumor location differ. However, pancreatic cancer in patients with long-term diabetes have an increased rate of resectability and the lowest rate of extrapancreatic extension of their

tumors [20]. In our study, the salutary impact of metformin on survival for patients with pancreatic adenocarcinoma is lost when the cancers are resectable and the use of sulfonylureas is associated with longer survival. Tumor criteria and margin status continue to be the overriding predictors of survival for patients with resectable pancreatic adenocarcinoma when considering metformin therapy for patients with resectable disease.

The proposed mechanism for metformin as an anti-cancer agent is multifactorial. Metformin ameliorates hyperglycemia/hyperinsulinemia, activates the epidermal growth factor receptor (EGFR), and activates AMP/MAP-kinase, which therefore inhibits the mammalian target of rapamycin (mTor) pathway [21]. Metformin may be a potential adjunct to current chemotherapeutic strategies, particularly targeted therapy of the EGFR or mTor pathway. Combined approaches with EGFR inhibitors with metformin are potential synergistic novel therapeutic strategies for pancreatic adenocarcinoma. Results are pending of a phase II, randomized, placebo controlled study to evaluate the efficacy of the combination of gemcitabine, erlotinib and metformin for patients with locally advanced and/or metastatic pancreatic adenocarcinoma by a group in Amsterdam.

Reinventing currently administered medications can expedite the approval process for cancer therapy, as the safety profile has already been proven with historical data. Metformin is potentially the newest adjunct to cancer therapy by reinvention. For patients with resectable cancer, however, it appears that improvement is more dependent on previously known prognostic factors, such as margin status and TNM staging, and the potential benefits of metformin alone are lost for patients with resectable disease. Further investigation is warranted, however, for locally advanced and metastatic disease, as well as synergistic therapy with metformin for patients with resectable pancreatic adenocarcinoma, especially given its historically safe drug profile.

Obesity is epidemic in the United States and there is an associated rise in type II diabetes mellitus, and as previously stated, there is a relationship between diabetes and pancreatic cancer. There have been numerous reports of the detrimental effects of obesity, particularly visceral fat on cancer survival [22-24]. Furthermore, diabetes increases cardiovascular risks and has a particular interlaced relationship with pancreatic cancer diagnosis and prognosis. A recent meta-analysis identified a 31% reduction in overall cancer incidence or mortality when metformin is used as treatment for diabetes [25]; however, more studies are needed to define the impact metformin and other diabetic therapies have on survival.

This study is novel in that patients treated with sulfonylureas (not metformin) have an improved survival compared to patients not treated with sulfonylureas. Studies to date have suggested that metformin is associated with a better prognosis in patients with pancreatic adenocarcinoma and that sulfonylureas have an increased risk of cancer, although this has not been corroborated with randomized control trials [26]. Less is known, however, about the prognostic effect of sulfonylureas for patients with cancer and furthermore, specifically for pancreatic adenocarcinoma. The realm of diabetes and pancreatic adenocarcinoma continues to be complex and further investigation is warranted not only on the effects of obesity and diabetes, but also the effects of metformin and sulfonylureas on cancer-specific outcomes.

References

1. Toomey P (2012) Pancreatic Adenocarcinoma: Complete Tumor Extirpation Improves Survival Benefit Despite Larger Tumors for Patients Who Undergo Distal Pancreatectomy and Splenectomy. *Journal of Gastrointestinal Surgery* 16: 376-81.
2. Brennan MF, Moccia RD, Klimstra D (1996) Management of adenocarcinoma of the body and tail of the pancreas. *Ann Surg* 223: 506-511.
3. Moon HJ, An JY, Heo JS, Choi SH, Joh JW, et al. (2006) Predicting survival after surgical resection for pancreatic ductal adenocarcinoma. *Pancreas* 32: 37-43.
4. Jemal A, Siegel R, Ward E, Hao Y, Xu J, et al. (2009) Cancer statistics, 2009. *CA Cancer J Clin* 59: 225-249.
5. Parkin DM, Bray F, Ferlay J, Pisani P (2001) Estimating the world cancer burden: Globocan 2000. *Int J Cancer* 94: 153-156.
6. Felber JP, Golay A (2002) Pathways from obesity to diabetes. *Int J Obes Relat Metab Disord* 26 Suppl 2: S39-45.
7. Currie CJ, Poole CD, Gale EA (2009) The influence of glucose-lowering therapies on cancer risk in type 2 diabetes. *Diabetologia* 52: 1766-1777.
8. Baschnagel (2012) Survival after Chemoradiation in Resected Pancreatic Cancer: The Impact of Adjuvant Gemcitabine. *International Journal of Radiation Oncology Biology Physics* 83: 331-5.
9. Arshad A, Al-Leswas D, Al-Taan O, Stephenson J, Metcalfe M, et al. (2013) Pooled survival and response data from phase III randomized controlled trials for gemcitabine-based regimens in the treatment of advanced pancreatic cancer. *Am J Clin Oncol* 36: 411-414.
10. Saif MW (2009) Adjuvant treatment of pancreatic cancer in 2009: where are we? Highlights from the 45th ASCO annual meeting. Orlando, FL, USA. May 29-June 2, 2009. *JOP* 10: 373-377.
11. Habermehl D, Kessel K, Welzel T, Hof H, Abdollahi A, et al. (2012) Neoadjuvant chemoradiation with Gemcitabine for locally advanced pancreatic cancer. *Radiat Oncol* 7: 28.
12. Mathur A, Ross SB, Luberic K, Kurian T, Vice M, et al. (2014) Margin status impacts survival after pancreaticoduodenectomy but negative margins should not be pursued. *Am Surg* 80: 353-360.
13. Pratley RE, Kuritzky L, Tenzer P (2014) A patient-centered approach to managing patients with type 2 diabetes. *Am J Med* 127: e15-16.
14. Inzucchi SE, Lipska KJ, Mayo H, Bailey CJ, McGuire DK (2014) Metformin in patients with type 2 diabetes and kidney disease: a systematic review. *JAMA* 312: 2668-2675.
15. Nair V, Pathi S, Jutooru I, Sreevalsan S, Basha R, et al. (2013) Metformin inhibits pancreatic cancer cell and tumor growth and downregulates Sp transcription factors. *Carcinogenesis* 34: 2870-2879.
16. Sadeghi N, Abbruzzese JL, Yeung SC, Hassan M, Li D (2012) Metformin use is associated with better survival of diabetic patients with pancreatic cancer. *Clin Cancer Res* 18: 2905-2912.
17. Noto H, Goto A, Tsujimoto T, Noda M (2012) Cancer risk in diabetic patients treated with metformin: a systematic review and meta-analysis. *PLoS One* 7: e33411.
18. Bodmer M, Becker C, Meier C, Jick SS, Meier CR (2012) Use of antidiabetic agents and the risk of pancreatic cancer: a case-control analysis. *Am J Gastroenterol* 107: 620-626.
19. Bowker SL, Majumdar SR, Veugelers P, Johnson JA (2006) Increased cancer-related mortality for patients with type 2 diabetes who use sulfonylureas or insulin: Response to Farooki and Schneider. *Diabetes Care* 29: 1990-1991.
20. Ishikawa O, Ohhigashi H, Wada A, Tateishi R, Ishiguro S, et al. (1989) Morphologic characteristics of pancreatic carcinoma with diabetes mellitus. *Cancer* 64: 1107-1112.
21. Goodwin PJ, Stambolic V (2011) Obesity and insulin resistance in breast cancer--chemoprevention strategies with a focus on metformin. *Breast* 20 Suppl 3: S31-35.
22. Mathur A, Hernandez J, Shaheen F, Shroff M, Dahal S, et al. (2011) Preoperative computed tomography measurements of pancreatic

- steatosis and visceral fat: prognostic markers for dissemination and lethality of pancreatic adenocarcinoma. *HPB (Oxford)* 13: 404-410.
23. Calle EE, Rodriguez C, Walker-Thurmond K, Thun MJ (2003) Overweight, obesity, and mortality from cancer in a prospectively studied cohort of U.S. adults. *N Engl J Med* 348: 1625-1638.
 24. Kahn SE, Hull RL, Utzschneider KM (2006) Mechanisms linking obesity to insulin resistance and type 2 diabetes. *Nature* 444: 840-846.
 25. Decensi A, Puntoni M, Goodwin P, Cazzaniga M, Gennari A, et al. (2010) Metformin and cancer risk in diabetic patients: a systematic review and meta-analysis. *Cancer Prev Res (Phila)* 3: 1451-1461.
 26. Thakkar B, Aronis KN, Vamvini MT, Shields K, Mantzoros CS (2013) Metformin and sulfonylureas in relation to cancer risk in type II diabetes patients: a meta-analysis using primary data of published studies. *Metabolism* 62: 922-934.

This article was originally published in a special issue, entitled: "[Targeted-Therapy of Pancreatic disorder](#)", Edited by Dr. Jiazhi Sun