

Production and Purification of Recombinant Somatolactin and its Effects on Insulin-like Growth Factors Gene Expression in Tilapia Hepatocytes

Jianpeng Peng, Anji Lian and Quan Jiang*

Key Laboratory of Bio-resources and Eco-environment of Ministry of Education, College of Life Sciences, Sichuan University, Chengdu, PR China

Abstract

Somatolactin (SL), the member of the growth hormone (GH)/prolactin (PRL) family, is fish-specific pituitary hormone with diverse functions. However, little is known about its biological function in fish hepatocytes. Using tilapia as a model, SL transcripts were shown to be widely expressed in various extrapituitary tissues with the relatively high expression level in liver. To explore the biological action of SL in hepatocytes, we produced and purified recombinant tilapia SL protein which could induce pigment aggregation in tilapia melanophores. Further, the antiserum for the SL was produced and its specificity was confirmed by antiserum preabsorption. During 4 week starvation, hepatic SL transcripts in starved fish were significantly higher than the control fish starting on the 1st week of starvation until 4th week. After re-feeding, the SL transcripts level returned to normal. Using primary cultures of tilapia hepatocytes, insulin-like growth factors (IGF1 and IGF2) gene expression were elevated by static incubation with recombinant tilapia SL. In contrast, removal endogenous SL by immunoneutralization using SL antiserum was shown to inhibit IGF1 and IGF gene expression. These findings, taken together, provide evidence for the first time that SL may serve as a novel regulator in fish stimulating IGF1 and IGF gene expression in hepatocytes.

Keywords: Somatolactin; Insulin-like growth factor; Tilapia hepatocytes; Fasting and refeeding

Abbreviations: SL: Somatolactin; GH: Growth Hormone; PRL: Prolactin; IGF: Insulin-like Growth Factor

Introduction

Somatolactin (SL), a member of the growth hormone (GH)/prolactin (PRL) family, is fish-specific hormone as the gene has been lost in tetrapods during the period of land invasion [1]. It is well demonstrated that SL possesses both glycosylated and non-glycosylated forms in fish [2]. Biochemical and physiological studies demonstrated that SL might be involved in a variety of physiological actions including reproduction [3-5] smoltification [6] acid-base balance [7] background adaptation [8,9] phosphate transport [10] melanosome aggregation [11,12] and immune response [13]. Although major physiological actions of SL remain an interesting yet unresolved issue, direct evidences from mutant of medaka [14-16] and “cobalt” rainbow trout [17,18] support the concept that major functions of SL are involved in chromatophore regulation and lipid metabolism.

The insulin-like growth factors (IGFs), including IGF1 and IGF2, are polypeptide hormones. The production of IGF1 is stimulated by GH and its main action is mediated by binding to specific IGF receptors present on many cell types in virtually all tissues, especially in liver, muscle and bone [19]. In fish, IGF1 has been involved in numerous essential functions including but not limited to growth [20] metabolism [21] development [22] reproduction [23] and immunity [24]. The precise role of IGF2 in fish tissues is still under investigation, although its mRNA expression pattern has been detected in liver and in numerous other organs [25]. At present, the effect of SL on IGFs gene expression is confined to *in vivo* studies and still controversial. In previous studies, injection of coho salmon SL stimulated IGF gene expression [26] and over-expression SL could increase IGF1 and IGF2 mRNA levels in zebrafish embryo [27], whereas intraperitoneal injection of a single dose of SL to juvenile gilthead sea bream did not modify the circulating amount of IGF1 [28]. These findings raise the possibility that IGF gene expression may be under SL control in fish. However, no information is available regarding the biological actions of SL on IGF gene expression in fish hepatocytes.

Tilapia is the second largest species of fish farmed (after carp) worldwide with 40% produced by China [29]. Since a better understanding of IGF regulation in tilapia may have important implication in the improvement of the specie culture, the tilapia was chosen as the animal model to investigate biological functions of SL. Although, two SL subtypes, i.e., SLa and SLb, have been identified in fish, only one copy of SL (SLa) is found in the tilapia genome. In the present study, the distributions of SL transcripts were investigated in extra pituitary organs of the tilapia. Moreover, the recombinant protein and specific antiserum for tilapia SL were produced. The hepatic SL mRNA expression in response to fasting and subsequent re-feeding was also evaluated. Using primary cultures of tilapia hepatocytes as a model, the hepatic actions for SL regulation of IGF1 and IGF gene expression were investigated. Our results demonstrated for the first time that SL could serve as a novel stimulator for IGFs gene expression in tilapia hepatocytes.

Materials and Methods

Animals

Sexually mature male tilapia (*Oreochromis mossambicus*) (standard length: 11 ± 0.5 cm, body weight: 50 ± 5 g) were maintained in freshwater aquaria at 28°C under 10 h dark/14 h light photoperiod. The fish were fed commercial diet (40% protein, 12% fat, 2% fiber, 8.5% moisture, 8% ash, Tongwei, China) to satiety twice a day at 10:00 am and 16:00 pm. During the process of tissue sampling, the fish were sacrificed by spinosectomy after anesthesia with 0.05% MS222 (Sigma,

*Corresponding author: Quan Jiang, Key Laboratory of Bio-resources and Eco-environment of Ministry of Education, College of Life Sciences, Sichuan University, Chengdu-610065, PR China, Tel: +86 28 8540 7983; E-mail: jiangqua@gmail.com

Received February 24, 2016; Accepted April 14, 2016; Published April 21, 2016

Citation: Peng J, Lian A, Jiang Q (2016) Production and Purification of Recombinant Somatolactin and its Effects on Insulin-like Growth Factors Gene Expression in Tilapia Hepatocytes. Fish Aquac J 7: 166. doi:10.4172/2150-3508.1000166

Copyright: © 2016 Peng J, et al. This is an open-access article distributed under the terms of the Creative Commons Attribution License, which permits unrestricted use, distribution, and reproduction in any medium, provided the original author and source are credited.

St Louis, MO) according to the procedures approved by the Animal Ethics Committee of Sichuan University.

Extrapituitary SL gene expression in Tilapia

The extrapituitary distribution of SL was examined by using real-time PCR. Briefly, total RNA was isolated from selected tissues using RNazol (MRC, Cincinnati, OH, USA), digested with RNase-free DNase I to remove genomic DNA contamination, and reversely transcribed using M-MLV (TaKaRa, Dalian, China). After that, real-time PCR assays were performed on the CFX96 real-time PCR Detection System (Bio-Rad Laboratories, CA, USA). PCR reaction was conducted with a SYBR Select Master Mix kit (Applied Biosystems) using the primers specific for tilapia SL (SL forward primer: 5' CCCACTCCCTTTGCGACTT 3' and SL reverse primer: 5' TAGCGGTCCAGTGTCTCT 3'). Real-time PCR for the SL was performed with initial denaturation at 94°C for 3 min followed by 35 cycles of amplification with denaturation at 94°C for 30 sec, annealing at 56°C for 30 sec, and extension at 72°C for 30 sec and then fluorescent signal collection at 80°C for 1 sec. For data calibration, serial dilutions of plasmid DNA containing the ORF of SL were used as the standards for these real-time PCR assay. As an internal control, real-time PCR for 18S rRNA was conducted using the primers specific for 18S rRNA (forward primer: 5' GGACACGGAAAGGATTGACAG 3' and reverse primer: 5' GTTCGTTATCGGAATTAACCAGAC 3'). In these experiments, no significant changes were observed for 18S rRNA expression. The quantitative results were normalized as a ratio of the target gene/18S rRNA expression level.

Recombinant protein for tilapia SL

The open reading frame of the tilapia SL (GenBank Accession No: AB442015) was PCR-isolated using an Expand High Fidelity system using primers specific for tilapia SL (forward primer: 5' CGGGATCC GTA AGC ATG CCA CTA GAC 3' (*Bam*HI site underlined) and reverse primer: 5' GGAATTC TTA TGC ACA GTT GAA TTT 3' (*Eco*RI site underlined). The restriction sites introduced into the respective primers were used for subsequent cloning of PCR products into the prokaryotic expression vector pET28a His-tag vector (Novagen, Madison, WI). PCR amplification of SL was initiated by denaturation at 94°C for 1 min followed by primer annealing at 55°C for 1 min and extension at 72°C for 2 min for a total of 30 cycles. After size fractionation by 1% agarose gel electrophoresis, PCR products for SL were gel-purified using a QIAquick Gel Extraction kit (Qiagen, Hilden, Germany) and subcloned into the prokaryotic expression vector pET28a His-tag vector. Sequence identity of the SL inserts was confirmed by DNA sequencing using ABI310 genetic Analyzer (BGI, Shanghai, China). The expression vector generated, namely "pET28a-SL" was introduced into *E. coli*. BL21 (DE3) competent cells and single colonies of transformed bacteria were used for recombinant protein production in 250 ml Luria-Bertani medium with 50 µg/ml antibiotics ampicillin at 18°C with constant shaking (220 rpm). IPTG induction (0.5 mM, Sigma-Aldrich, St. Louis, MO) was added when the OD₂₆₀ reading of bacteria culture reached the level of 0.4-0.5. After incubation for appropriate duration, the bacteria with SL protein expression was harvested by centrifugation at 300 g for 20 min at 4°C and resuspended in 1x PBS (pH 8.0) for protein extraction. In this case, the cell suspension obtained was then subjected to 3 cycles of repeated freezing and thawing, followed by a 5 min sonication using a Branson Sonifier 250 (VWR Scientific, San Diego, CA). Maximal preparations of soluble protein fractions (~ 40%) can be reached after IPTG (0.5 mM) induction. Soluble and insoluble protein fractions of the cell lysate were isolated by high-speed centrifugation at 1,200 xg for 20 min at 4°C. After that, tilapia SL expressed as His-tagged recombinant

protein was purified from soluble fraction by immobilized metal ion affinity chromatography using Ni-NTA Superflow™ columns (Qiagen, Hilden, Germany) according to the manufacturer's instructions. The recombinant protein produced was quantified using a BCA protein assay kit (Pierce, Rockford, IL) and tested for bioactivity by using a pigment aggregation assay in tilapia melanophores.

Pigment aggregation assay in tilapia melanophores

Scales were collected from the dorsal fin of individual tilapia and a pigment aggregation assay for the testing of SL bioactivity was established as described previously [30]. Briefly, the scales collected were washed 3-5 times using fish physiological saline (pH: 7.4, 6.4 g/L NaCl, 0.1 g/L KCl, 0.2 g/L CaCl₂, 0.1 g/L MgSO₄, 0.08 g/L NaHCO₃, and 0.0 g/L NaH₂PO₄) to remove the mucus and then cultured in 6-well plates (Corning-Costar, Oneonta, NY) with MEM medium (Invitrogen) at 28°C under 5% CO₂ and saturated humidity. After incubation with drugs treatment for 1 h, the melanophores with different levels of pigment aggregation was evaluated by cells counting under an inverted microscope (Leica, Germany) and the extent of pigment dispersion was scored as aggregated, partially dispersed, or fully dispersed according to the melanophore index (M.I.) described by Hogben [31]. Since norepinephrine (NE) could induced melanosome aggregation in fish scales [11,12,30], parallel treatment with NE was used as a positive control for pigment aggregation.

Production of SL antisera

The recombinant protein of SL was used to raise antiserum in rabbit as described previously [32]. Briefly, after harvesting the pre-immunized serum (as a negative control for antiserum), ~200 µg recombinant protein dissolved in 0.6% NaCl was mixed with Freund's complete adjuvant and injected at multiple sites on the back and in the limbs of the rabbit. Booster injection with ~100 µg recombinant proteins mixed with Freund's incomplete adjuvant was initiated one month later and maintained for four months with regular booster injection once every 3 weeks. After that, final bleed was collected and the specificity of the antiserum obtained was tested in tilapia pituitary and liver lysates using Western blot with and without antiserum preabsorption with the antigen.

N-glycosidase digestion assay

To examine the status of glycosylation of SL expressed in tilapia pituitary, enzymatic deglycosylation was conducted as described previously [32]. Briefly, 35 µl pituitary cell lysate was introduced into a reaction mixture containing 2.5 µl β-mercaptoethanol, 2.5 µl 10% (wt/vol) SDS, and 10 µl 5x N-glycosidase F buffer (30 mM Na₂HPO₄, 20 mM EDTA, pH 7.2). After boiling for 5 min, 2.5 µl 20% (vol/vol) Triton X-100 containing 1 unit of N-glycosidase F (Calbiochem, San Diego, CA) was added. The sample was then incubated for 3 h at 37°C, sized fractionated by SDS-PAGE, and subjected to Western blotting using the antiserum for SL.

Western blot of Tilapia SL

Western blot for SL immunoreactivity was performed as described previously [30]. Briefly, tissues lysates were lysed in RIPA buffer (50 mM Tris-HCl, 150 mM NaCl, 1 mM EDTA, 1% NP-40, and 0.25% Na deoxycholate) containing with appropriate levels protease and phosphatase inhibitors (Roche Diagnostics, Mannheim, Germany). After clearing with high speed centrifugation at 4°C, these protein samples were resolved by SDS-PAGE, electroblotted onto nitrocellulose membrane, and subjected to Western blot using the antiserum for SL (1:5,000). After that, signal development was performed using

Immobilon™ Western Chemiluminescent Reagent (Millipore, Billerica, MA). For antiserum preabsorption on SL immunoreactivities, Western blot of tilapia tissues lysates were performed with SL antiserum incubated for 15-18 h at 4°C with the recombinant SL (0.1 µg/ml).

Expression patterns of hepatic SL under fasting conditions

Tilapia was distributed in twelve 70 liter tanks with 5 replicates each. The fish were allowed to acclimate to the tanks for 2 weeks prior to the beginning of the experiment as our described recently [33]. The tanks were siphoned daily, and regularly cleaned to remove algae. Fish were self-fed with a commercial diet (Tongwei, China). Ten fish, five fed and five fasted/re-fed, were periodically sampled in buckets containing 0.05% MS222 (Sigma, St Louis, MO) at days 0,7,14,21 and 28 of fasting (F0,F7,F14,F21 and F28, respectively) and days 7 of re-feeding (RF7). After that, the RT samples obtained from livers were subjected to real-time PCR to determine the gene expression levels of SL. As an internal control, real-time PCR for 18S rRNA was conducted. In these experiments, no significant changes were observed for 18S rRNA expression. The quantitative results were normalized as a ratio of the target gene/18S rRNA expression level.

Primary cultures of tilapia hepatocytes

Primary cultures of tilapia hepatocytes were prepared by collagenase digestion method as our described recently [33]. Briefly, liver slices were excised from tilapia and diced into 0.4 mm fragments with a McIlwain tissue chopper (Brinkmann, Mississauga, ON, Canada). After a 5 min incubation in Ca²⁺/Mg²⁺-free HBSS (HBSS medium with 4 mM NaHCO₃, 10 mM HEPES and 1% antibiotics- antimycotic; pH 7.63) with 1 mM EDTA, the liver fragments were digested in Ca²⁺/Mg²⁺-free HBSS medium with 20 mg/ml type IV collagenase (Sigma) for 30 min with constant shaking at 28°C. Hepatocytes were filtered through a nylon mesh with ~20 µm pore size to remove the undigested fragments/debris. After that, the cells were harvested by centrifugation at 5 g for 5 min and resuspended in M199 medium (Invitrogen). Total cell yield and percentage viability were estimated by cell counting in the presence of trypan blue using a hemocytometer.

IGFs gene measurement in cultured tilapia hepatocytes

Tilapia hepatocytes were seeded at a density of ~0.8 × 10⁶ cells/ml/well in PEI (5 µg/ml) pre-coated 24-well culture and treated with hormones or drugs for the duration as indicated in individual experiments. After that, total RNA was isolated by using RNAzol (MRC, Cincinnati, OH, USA), digested with RNase-free DNase I to remove genomic DNA contamination, and reversely transcribed using M-MLV (TaKaRa, Dalian, China). The RT samples obtained were subjected to real-time PCR with primers specific for tilapia IGF1 (IGF1 forward primer: 5' CAGTGCATGTGCTGTATCTCCT 3' and IGF1 reverse primer: 5' TCTTGGGAGTCTTGACAGGTGC 3') and IGF2 (IGF2 forward primer: 5' ACCCGTGGGATCGTAGAG 3' and IGF2 reverse primer: 5' GGGCATCACCGGTAT GAC 3'). Real-time PCR for the IGFs were performed with initial denaturation at 94°C for 3 min followed by 35 cycles of amplification with denaturation at 94°C for 30 sec, annealing at 62°C for 30 sec, and extension at 72°C for 30 sec and then fluorescent signal collection at 80°C for 1 sec. For data calibration, serial dilutions of plasmid DNA containing the ORFs of IGF1 and IGF2 were used as the standards for these real-time PCR assay. As an internal control, real-time PCR for 18S was also conducted in each experiment. The quantitative results were normalized as a ratio of the target gene/18S rRNA expression level.

Data transformation and statistics

For fasting experiments, data presented (as means ± SEM, N=5)

were analyzed using two-way ANOVA with Bonferroni posttest to examine the effects of the time and treatment on SL gene expression in liver. For real-time PCR of IGFs and SL transcripts, standard curves were constructed with serial dilutions of plasmids carrying the ORF of the respective gene targets. After linear regression of CT values, standard curves with a dynamic range of 10⁵ and correlation coefficient of ≥ 0.95 were used for data calibration with Bio-rad CFX 3.0 software. The raw data for the respective gene targets were quantified in terms of femtomole transcript detected per million cells. Since no significant changes were observed for 18S rRNA expression, the quantitative results were normalized as a ratio of the target gene/18S rRNA expression level and transformed as a percentage of the mean value in the control group without treatment (referred to as "%Ctrl"). For each batch of experiments, hepatocytes were prepared from 4 individual fish. All of the experiments were performed at least twice. Data presented (as means ± SEM) were analyzed using ANOVA followed by Duncan's test. Differences between groups were considered as significant at P<0.05.

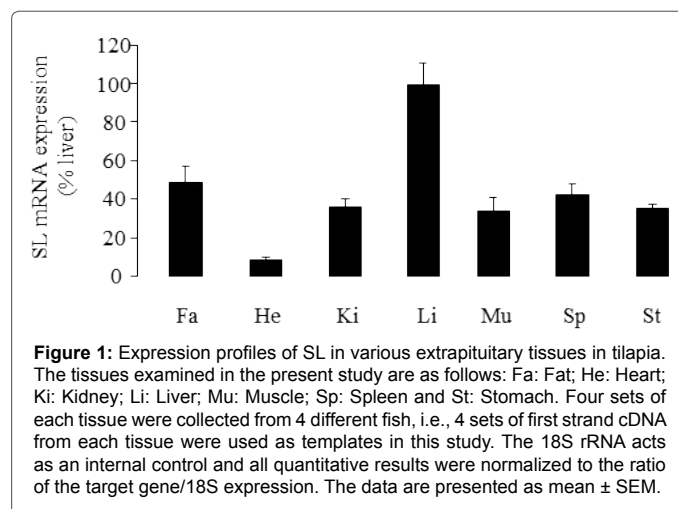
Results

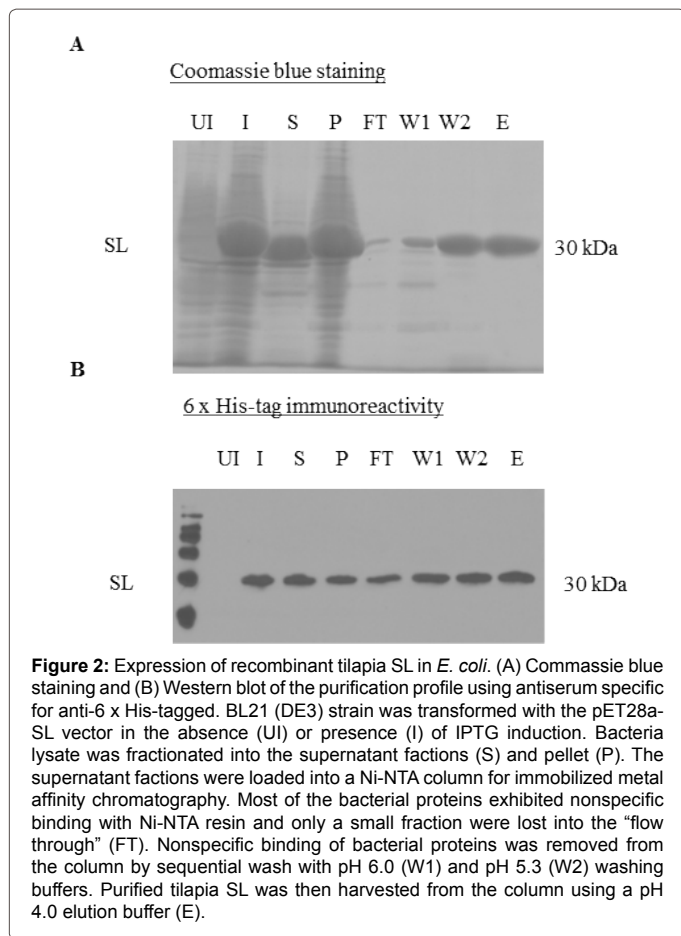
Extrapituitary SL gene expression in Tilapia

To characterize the extrapituitary expression profiles of SL, real-time PCR was performed in RNA samples prepared from selected tissues. The expression pattern of SL was ubiquitously detected in various tissues. The relatively high level of SL expression was detected in liver, to a lower extent in fat, kidney, muscle, spleen and stomach, and with the lowest level in heart (Figure 1).

Production of recombinant Tilapia SL

To produce recombinant protein for tilapia SL, *E. coli* BL21 (DE3) cells were transformed with pET28a-SL. As shown in (Figure 2A) target proteins for 30 kDa for SL were detected both in soluble and insoluble of fractions after IPTG induction. In subsequent studies, only the soluble fraction was used for protein purification using immobilized metal ion affinity chromatography. The 6x His fusion protein of SL in the soluble fraction of bacterial lysate was trapped with Ni-NAT columns and contaminating proteins of bacterial origin were removed by repeated washing. As revealed by Coomassie Blue staining, the final product of SL purified from the Ni-NTA columns was at high quality purity (>90%) without noticeable levels of contaminating proteins. These protein bands could also be detected by 6x His-tag antibody





(Figure 2B), confirming that they are the 6x His-tag recombinant fusion protein of tilapia SL.

Melanophore aggregating response to recombinant SL

To test the bioactivity of recombinant SL, the effect of SL on melanophore aggregation was examined. Using the melanophore index to evaluate the extent of pigment dispersion, melanophores of scales were aggregated within 1 h of incubation with 1 μ M SL treatment (Figure 3A). To further evaluate the dose-response effects of SL on melanophore aggregation, a dose-dependent study was also performed with the recombinant protein of tilapia SL. As shown in Figure 3B, tilapia SL was effective in increasing the melanophores aggregation in a concentration-related fashion. Parallel treatment with NE (1 μ M) was used as a positive control in these experiments.

SL immunoreactivities in Tilapia liver and pituitary lysates

To test the specificity of the newly raised antiserum, Western blot of tilapia liver and pituitary lysates was performed with the antiserum raised against SL. In this case, two protein bands with the size of 29 kDa and 27 kDa were detected in tilapia pituitary and liver lysates. As a positive control, the recombinant protein of tilapia SL (a single protein band of 30 kD in size) could be detected by SL antiserum (Figure 4A). In parallel studies, the specific signals for SL (29 kDa and 27 kDa) detected in liver and pituitary lysates could be totally abolished by preabsorption of SL antisera (1:5,000) with the SL recombinant proteins (0.1 mg/ml; Figure 4B). To further evaluate the glycosylation status of native SL, N-glycosidase digestion was performed using pituitary lysate. After N-glycosidase F digestion (1 Unit/50 μ l), the 29 kD protein band for SL

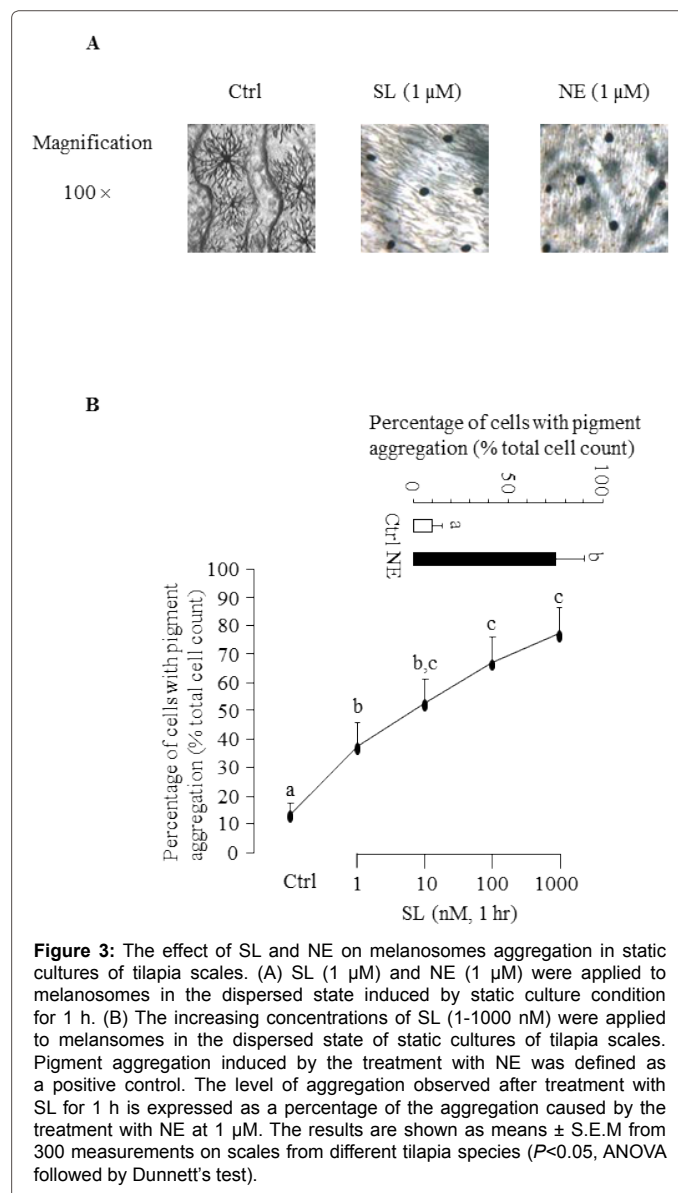
was obliterated with simultaneous rise in the signal intensity of the 27 kD band for SL (Figure 4C).

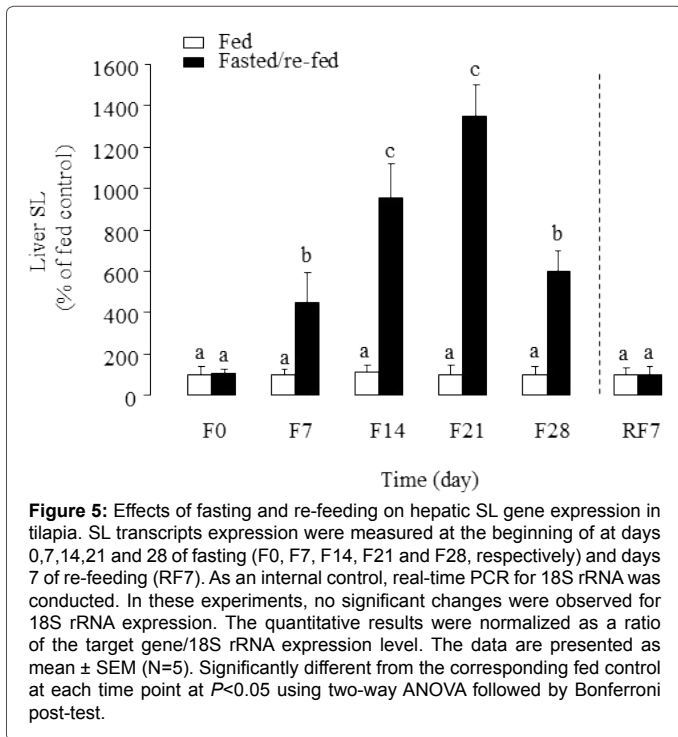
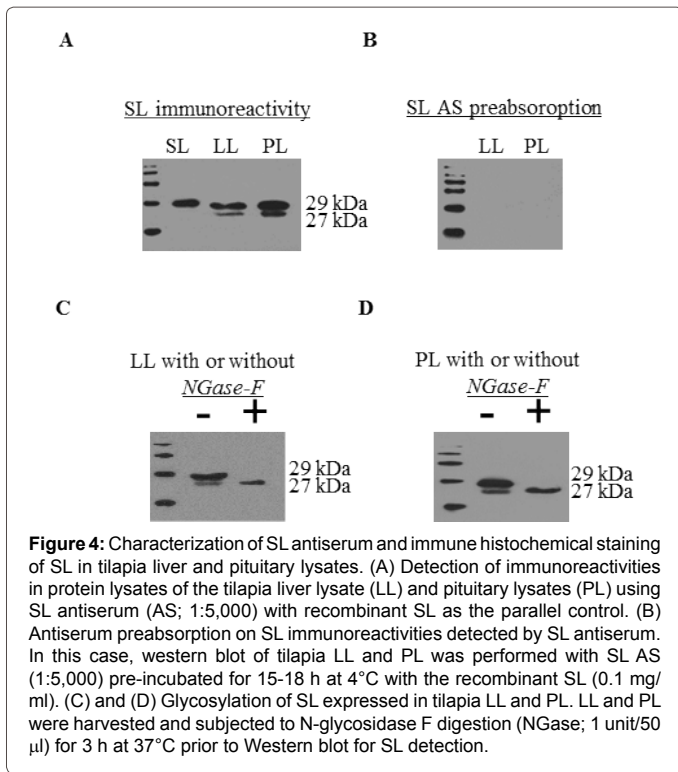
Effects of long-term fasting on hepatic SL gene expression

To assess the effects of prolonged fasting and subsequent re-feeding on SL gene expression in liver, the hepatic transcription profiles of SL were investigated by using real-time PCR. As shown in Figure 5, significantly increased expression levels of SL transcripts were observed in liver of fasted Tilapia at days 7, 14, 21 and 28 compared with the normally fed animals. Following re-feeding for 7 days, the SL expression level in liver returned to the continuously-fed control.

SL induction of IGF1 and IGF gene expression in tilapia hepatocytes

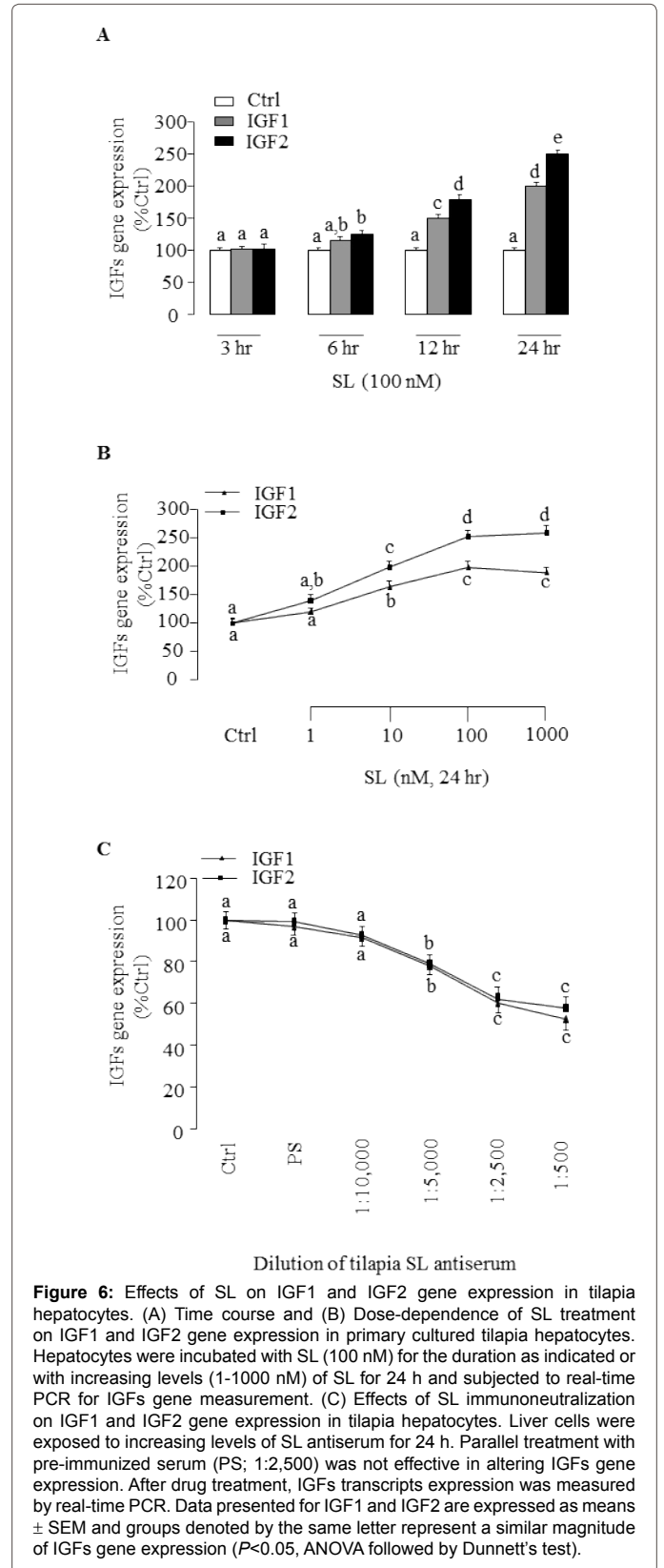
To elucidate for the direct actions of exogenous SL on IGFs gene expression in tilapia hepatocytes, we performed time-course studies of the effects of SL on IGF1 and IGF gene expression. Of note, significant increases in IGF1 and IGF gene expression were observed with 12 h and 24 h time points after the addition of 100 nM tilapia





SL (Figure 6A). By fixing duration of drug treatment at 24 h, dose-dependent experiments were also performed by exposing hepatocytes to increasing concentrations of tilapia SL (1-1000 nM). In this case, tilapia SL treatment was effective in increasing IGF1 and IGF gene expression levels in a dose-dependent manner. The minimal effective doses for SL induction of IGFs gene expression were found to be at 10 nM does range while maximal responses observed in the 100 nM dose

(Figure 6B). To further confirm if endogenous SL was involved in IGFs expression, immunoneutralization was performed in hepatocytes for 24 h with increasing levels of antiserum raised against tilapia SL. In



this case, tilapia SL antiserum resulted in a dose-dependent decrease in IGF1 and IGF gene expression (Figure 6C). The significant decrease in IGF1 and IGF gene expression were noted at 1:5,000 by SL antiserum, respectively. In this study, treatment with pre-immune serum (PS, 1:2,500) was not effective in altering IGFs gene expression, suggesting that the effect of SL antiserum was not due to the non-specific action of serum treatment.

Discussion

Although SL is a pituitary hormone unique to fish models, SL transcripts have been detected in extrapituitary tissues, e.g., in liver of tilapia observed in our present study, grass carp [34] and goldfish [35] and SL receptor was most highly expressed in liver of Tilapia [36] and Salmon [37]. These findings raise the possibility that SL may act locally as an autocrine/paracrine regulator in liver. To test our hypothesis, recombinant protein for Tilapia SL was produced in *E. coli* and purified to almost homogeneity by immobilized metal ion affinity chromatography. A previous study demonstrated that native red drum SL protein could cause melanosome aggregation both *in vivo* and *in vitro* [11]. Recently, recombinant zebrafish SL induced melanosome aggregation in a concentration-dependent manner in skin of zebrafish scales [12]. In our present studies, recombinant tilapia SL protein could elicit melanosome aggregation at a low concentration of 1 nM, which is also in good correlation with our previous studies where similar concentration of carp SL could be effective in stimulating melanosome aggregation [30]. Using recombinant protein of tilapia SL, specific polyclonal antiserum against the recombinant SL was developed. This antiserum appeared to be highly specific as

- Specific proteins with appropriate size for SL could be detected by Western blot of pituitary and liver lysates, and
- The immunostaining signals could be abolished by preabsorption of the antiserum with the recombinant protein for tilapia SL.

In fish models, both glycosylated and non-glycosylated forms of SL have been reported, but the abundance of glycosylated SL form varied from different fish species (e.g., a major form in cod [38] and *Cichlasoma dimerus* [39]; a minor form in grass carp [30] and sole [2]). In our studies with tilapia pituitary and liver lysate, only the 29 kDa SL but not the 27 kDa SL was sensitive to N-glycosidase F digestion. Given that the signal intensity of 29 kDa SL protein band was much stronger than that of the 27 kDa SL band in lysates, it is conceivable that the glycosylated SL may be the major form of SL in tilapia.

In fish, liver is one of the main sites of lipid storage [40]. In the initial stage of fasting, lipids in liver are rapidly decomposed for energy in tilapia [41]. There is some evidence for the involvement of SL in the regulation of energy homeostasis in fish species. Plasma SL levels are down-regulated in response to dietary amino acid profile and dietary protein source in gilthead sea bream [42]. More directly causal links from genetic evidence, the SL-deficient mutant of medaka showed that both triglycerides and cholesterol were significantly higher in liver than that of the wild type [16]. These observations indicated that SL could suppress lipid accumulation in organs. Since the SL transcripts can be detected in liver of Tilapia, these findings promote us to investigate the effect of long-term fasting and re-feeding on hepatic SL mRNA expression. In our current study, fasting for 4 weeks produced significant elevation in hepatic SL transcripts, whereas the hepatic SL expression levels returned to the continuously-fed controls following re-feeding. The increased hepatic SL expression in response to fasting strongly indicates that SL is involved in certain aspects of energy homeostasis. It is worth mentioning that SL transcripts in response to

fasting status change might be tissue- and species-specific. In tilapia, pituitary SL transcripts were significantly reduced during 4 weeks fasting [43], whereas pituitary SL mRNA levels were unaffected by either fasting or re-feeding in rabbitfish [44].

In fish, GH effects are generally thought to be indirect through GH stimulation of hepatic IGFs expression. In our present study, we postulate that SL, a family member of the GH/PRL lineage, may retain properties of GH to control IGF gene expression in hepatocytes. This idea is supported by our present studies in which treatment of tilapia SL could time- and dose-dependently stimulate IGF1 and IGF gene expression in tilapia hepatocytes. In contrast, removal of endogenous SL by immunoneutralization could reduce IGF1 and IGF2 transcripts in a dose-dependent manner, suggesting that local production of SL is required to maintain basal level of IGFs gene transcription in tilapia hepatocytes. IGFs have been found to be expressed in teleosts in a wide range of tissues throughout life, which suggests that the autocrine/paracrine role of IGFs may be of particular physiological importance in bony fish [45-47]. Liver-derived SL may act on a broad array of physiological functions such as development, growth and metabolism to some extent as GH does through IGF signaling in tilapia.

In summary, SL transcripts were detected in various extrapituitary tissues. The recombinant protein of tilapia SL with bioactivity in inducing pigment aggregation in tilapia melanophores has been produced. Using this recombinant protein, the antiserum for SL was produced and its specificity was confirmed by antiserum preabsorption. Fasting for 4 weeks resulted in an increase SL gene expression in liver, whereas hepatic SL transcripts were restored after 7 days of re-feeding. Using primary cultures of tilapia hepatocytes, we have demonstrated for the first time that IGF1 and IGF gene expression could be elevated by treatment with exogenous tilapia SL. Consistent with these results, removal of endogenous SL by immunoneutralization resulted in a significant inhibition of IGF1 and IGF gene expression. Further study is warranted to elucidate whether increased hepatic IGFs output could further regulate SL production at the tilapia pituitary level.

Acknowledgment

The project was supported by grants from the National Natural Science Foundation of China (31302165). We are grateful and also Jianpeng Peng, Anji Lian for their equal contribution to this work

References

1. Fukamachi S, Meyer A (2007) Evolution of receptors for growth hormone and somatolactin in fish and land vertebrates: lessons from the lungfish and sturgeon orthologues. *J Mol Evol* 65: 359-372.
2. Astola A, Pendón C, Ortíz M, Valdivia MM (1996) Cloning and expression of somatolactin, a pituitary hormone related to growth hormone and prolactin from gilthead seabream. *Sparus aurata*. 104: 330-336.
3. Planas JV, Swanson PR, Weaver M, Dickhoff WW (1992) Somatolactin stimulates *in vitro* gonadal steroidogenesis in coho salmon, *Oncorhynchus kisutch*. *General Comp Endocrinol*: 871-875.
4. Rand-Weaver M, Swanson P, Kawauchi H, Dickhoff WW (1992) Somatolactin, a novel pituitary protein: purification and plasma levels during reproductive maturation of coho salmon. *J Endocrinol* 133: 393-403.
5. Olivereau M, Rand-Weaver M (1994) Immunocytochemical study of the somatolactin cells in the pituitary of Pacific salmon, *Oncorhynchus nerka*, and *O keta* at some stages of the reproductive cycle. *Gen Comp Endocrinol* 93: 28-35.
6. Rand-Weaver M, Pottinger TG, Sumpter JP (1993) Plasma somatolactin concentrations in salmonid fish are elevated by stress. *J Endocrinol* 138: 509-515.
7. Kakizawa S, Kaneko T, Hirano T (1996) Elevation of plasma somatolactin concentrations during acidosis in rainbow trout (*Oncorhynchus mykiss*) *J Exp Biol* 199: 1043-1051.

8. Zhu Y, Thomas P (1996) Elevations of somatolactin in plasma and pituitaries and increased alpha-MSH cell activity in red drum exposed to black background and decreased illumination. *Gen Comp Endocrinol* 101: 21-31.
9. Zhu Y, Thomas P (1998) Effects of light on plasma somatolactin levels in red drum (*Sciaenops ocellatus*). *Gen Comp Endocrinol* 111: 76-82.
10. Lu M, Swanson P, Renfro JL (1995) Effect of somatolactin and related hormones on phosphate transport by flounder renal tubule primary cultures. *Am J Physiol* 268: 577-582.
11. Zhu Y, Thomas P (1997) Effects of somatolactin on melanosome aggregation in the melanophores of red drum (*Sciaenops ocellatus*) scales. *Gen Comp Endocrinol* 105: 127-133.
12. Nguyen N, Sugimoto M, Zhu Y (2006) Production and purification of recombinant somatolactin beta and its effects on melanosome aggregation in zebrafish. *Gen Comp Endocrinol* 145: 182-187.
13. Calduch Giner JA, Pendon C, Valdivia MM, Perez Sanchez J (1998) Recombinant somatolactin as a stable and bioactive protein in a cell culture bioassay: development and validation of a sensitive and reproducible radioimmunoassay. *J Endocrinol* 156: 441-447.
14. Fukamachi S, Yada T, Meyer A, Kinoshita M (2009) Effects of constitutive expression of somatolactin alpha on skin pigmentation in medaka. *Gene* 442: 81-87.
15. Fukamachi S, Sugimoto M, Mitani H, Shima A (2004) Somatolactin selectively regulates proliferation and morphogenesis of neural-crest derived pigment cells in medaka. *Proc Natl Acad Sci USA* 101: 10661-10666.
16. Fukamachi S, Yada T, Mitani H (2005) Medaka receptors for somatolactin and growth hormone: phylogenetic paradox among fish growth hormone receptors. *Genetics* 171: 1875-1883.
17. Kaneko T, Kakizawa S, Yada T (1993) Pituitary of "cobalt" variant of the rainbow trout separated from the hypothalamus lacks most pars intermedia and neurohypophysial tissue. *Gen Comp Endocrinol* 92: 31-40.
18. Yada T, Moriyama S, Suzuki Y, Azuma T, Takahashi A, et al. (2002) Relationships between obesity and metabolic hormones in the "cobalt" variant of rainbow trout. *Gen Comp Endocrinol* 128: 36-43.
19. Vottero A, Guzzetti C, Loche S (2013) New aspects of the physiology of the GH-IGF-1 axis. *Endocr Dev* 24: 96-105.
20. Beckman BR (2011) Perspectives on concordant and discordant relations between insulin-like growth factor 1 (IGF1) and growth in fishes. *Gen Comp Endocrinol* 170: 233-252.
21. Castillo J, Codina M, Martinez ML, Navarro I, Gutierrez J (2004) Metabolic and mitogenic effects of IGF-I and insulin on muscle cells of rainbow trout. *Am J Physiol Regul Integr Comp Physiol* 286: 935-941.
22. Duan C (1998) Nutritional and developmental regulation of insulin-like growth factors in fish. *J Nutr* 128: 306-314.
23. Reinecke M (2010) Insulin-like growth factors and fish reproduction. *Biol Reprod* 82: 656-661.
24. Choi YH, Kim KW, Han HS, Nam TJ, Lee BJ (2014) Dietary Hizikia fusiformis glycoprotein-induced IGF-I and IGFBP-3 associated to somatic growth, polyunsaturated fatty acid metabolism, and immunity in juvenile olive flounder *Paralichthys olivaceus*. *Comparative Biochem Physiol: Mol Integr Physiol* 167: 1-6.
25. Wood AW, Duan C, Bern HA (2005) Insulin-like growth factor signaling in fish. *Int Rev Cytol* 243: 215-285.
26. Duan C, Duguay SJ, Plisetskaya EM (1993) Insulin-like growth factor I (IGF-I) mRNA expression in coho salmon, *Oncorhynchus kisutch*: Tissue distribution and effects of growth hormone/prolactin family proteins. *Fish Physiol Biochem* 11: 371-379.
27. Wan G, Chan KM (2010) A study of somatolactin actions by ectopic expression in transgenic zebrafish larvae. *J Mol Endocrinol* 45: 301-315.
28. Vega Rubin de Celis S, Gomez P, Calduch Giner JA, Medale F, Perez Sanchez J (2003) Expression and characterization of European sea bass (*Dicentrarchus labrax*) somatolactin: assessment of in vivo metabolic effects. *Marine biotechnology*, NY, USA 5: 92-101.
29. Chiu A, Li L, Guo S, Bai J, Fedor C, et al. (2013) Feed and fishmeal use in the production of carp and tilapia in China. *Aquaculture* 414: 127-134.
30. Jiang Q, Wong AO (2013) Signal transduction mechanisms for autocrine/paracrine regulation of somatolactin-alpha secretion and synthesis in carp pituitary cells by somatolactin-alpha and beta. *Am J Physiol Endocrinol Metabol* 304: 176-186.
31. Hogben L, Slome D (1931) The Pigmentary Effector System. The Dual Character of Endocrine Co-Ordination in Amphibian Colour Change. *Proceedings of the Royal Society B Biological Sciences* 108: 10-53.
32. Jiang Q, Ko WK, Wong AO (2011) Insulin-like growth factor as a novel stimulator for somatolactin secretion and synthesis in carp pituitary cells via activation of MAPK cascades. *Am J Physiol Endocrinol Metabol* 301: 1208-1219.
33. Lian A, Wu K, Liu T, Jiang N, Jiang Q (2016) Adropin induction of lipoprotein lipase expression in tilapia hepatocytes. *J Mol Endocrinol* 56: 11-22.
34. Jiang Q, Ko WK, Lerner EA, Chan KM, Wong AO (2008) Grass carp somatolactin: Evidence for PACAP induction of somatolactin-alpha and beta gene expression via activation of pituitary PAC-1 receptors. *Am J Physiol Endocrinol Metabol* 295: 463-476.
35. Jiang Q, Wong AO (2014) Somatostatin-28 inhibitory action on somatolactin-alpha and -beta gene expression in goldfish. *Am J Physiol Regul Integr Comp Physiol* 307: 755-768.
36. Pierce AL, Fox BK, Davis LK, Visitacion N, Kitahashi T, et al. (2007) Prolactin receptor, growth hormone receptor, and putative somatolactin receptor in Mozambique tilapia: tissue specific expression and differential regulation by salinity and fasting. *Gen Comp Endocrinol* 154: 31-40.
37. Fukada H, Ozaki Y, Pierce AL, Adachi S, Yamauchi K, et al. (2005) Identification of the salmon somatolactin receptor, a new member of the cytokine receptor family. *Endocrinology* 146: 2354-2361.
38. Rand-Weaver M, Noso T, Muramoto K, Kawauchi H (1991) Isolation and characterization of somatolactin, a new protein related to growth hormone and prolactin from Atlantic cod (*Gadus morhua*) pituitary glands. *Biochemistry* 30: 1509-1515.
39. Cánepa M, Pozzi A, Astola A, Maggese MC, Vissio P (2008) Effect of salmon melanin-concentrating hormone and mammalian gonadotrophin-releasing hormone on somatolactin release in pituitary culture of *Cichlasoma dimerus*. *Cell Tissue Res* 333: 49-59.
40. Stubhaug I, Tocher DR, Bell JG, Dick JR, Torstensen BE (2005) Fatty acid metabolism in Atlantic salmon (*Salmo salar* L.) hepatocytes and influence of dietary vegetable oil. *Biochim Biophys Acta* 1734: 277-288.
41. Liu B, He Q, Tang Y (2009) Effects of starvation on growth, physiological and biochemical parameter of GIFT strain of Nile tilapia (*Oreochromis niloticus*). *Journal of Fishery Sciences of China* 16: 230-237.
42. Vega Rubin de Celis S, Rojas P, Gomez Requeni P, Albalat A, Gutierrez J, et al. (2004) Nutritional assessment of somatolactin function in gilthead sea bream (*Sparus aurata*): concurrent changes in somatotrophic axis and pancreatic hormones. *Comparative biochemistry and physiology Part A, Molecular & integrative physiology* 138: 533-542.
43. Uchida K, Moriyama S, Breves JP, Fox BK, Pierce AL, et al. (2009) cDNA cloning and isolation of somatolactin in Mozambique tilapia and effects of seawater acclimation, confinement stress, and fasting on its pituitary expression. *Gen Comp Endocrinol* 161: 162-170.
44. Ayson FG, de Jesus-Ayson EG, Takemura A (2007) mRNA expression patterns for GH, PRL, SL, IGF-I and IGF-II during altered feeding status in rabbitfish, *Siganus guttatus*. *Gen Comp Endocrinol* 150: 196-204.
45. Caruso MA, Sheridan MA (2011) New insights into the signaling system and function of insulin in fish. *Gen Comp Endocrinol* 173: 227-247.
46. Schlueter PJ, Peng G, Westerfield M, Duan C (2007) Insulin-like growth factor signaling regulates zebrafish embryonic growth and development by promoting cell survival and cell cycle progression. *Cell Death Differ* 14: 1095-1105.
47. Sang X, Curran MS, Wood AW (2008) Paracrine insulin-like growth factor signaling influences primordial germ cell migration: in vivo evidence from the zebrafish model. *Endocrinology* 149: 5035-5042.