

Guttate, Pustular and Plaque Psoriasis

Jorge E. Rueda¹, Ma. Guadalupe Trevino Alanis¹, Maria G. Moreno¹, Hector R. Martinez Menchaca² and Gerardo Rivera Silva^{1*}

¹Department of Health Science, University of Monterrey, Mexico

²Department of Orthodontics, University of Louisville, USA

*Corresponding author: Gerardo Rivera Silva, Division of Health Sciences, University of Monterrey, Av. I. Morones Prieto # 4500 Pte, San Pedro Garza Garcia, NL, 66238, Mexico, Tel: +52 (81) 8215-1451; Fax: +52 (81) 8215-1000; E-mail: gerardo.rivera@udem.edu

Rec date: Sep 18, 2015, Acc date: Sep 23, 2015, Pub date: Sep 25, 2015

Copyright: © 2015 Rueda JE, et al. This is an open-access article distributed under the terms of the Creative Commons Attribution License, which permits unrestricted use, distribution, and reproduction in any medium, provided the original author and source are credited.

Clinical Image

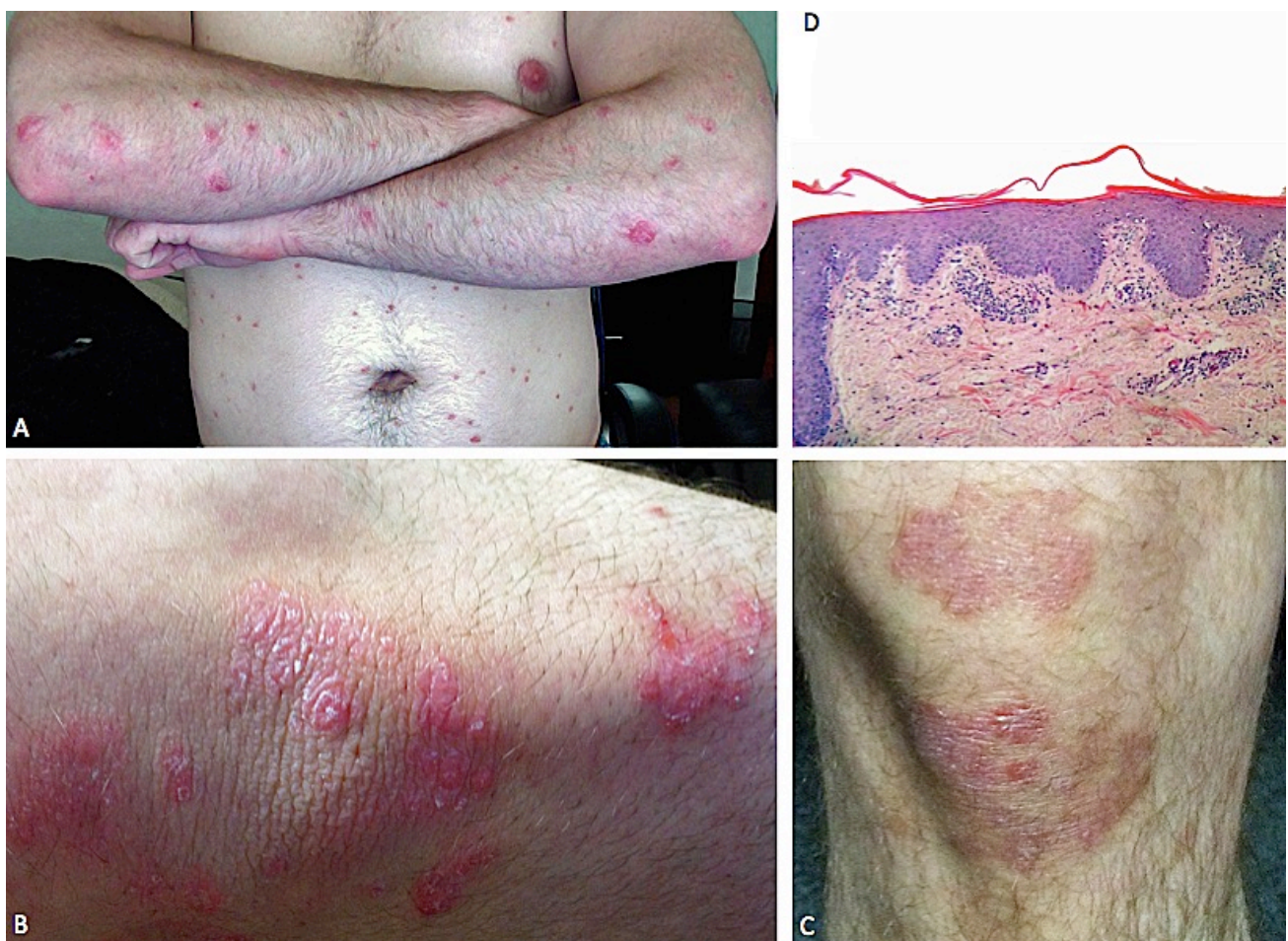


Figure 1: (A) Psoriasis lesions disseminated on the chest, abdomen, elbows and forearms. (B) Small white pustules on the elbows. (C) Red plaques on the knees. (D) Elongation of rete ridges, dilated vessels and papillae with inflammatory infiltration (haematoxylin and eosin stain; bar-100 μ m).