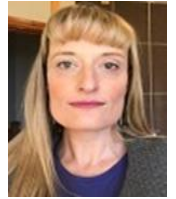


Triage of children with mental health difficulties presenting in A&E in a general hospital

Anne-Frédérique Naviaux

Summerhill Mental Health Centre, Ireland



Abstract

In Wexford and Waterford, an “out of hours” child psychiatric service has been developed, in order to provide help when the CAMHS services are not accessible. Providing a service for under 18 years old patients with mental health issues presenting in Accident and Emergency (A&E) or hospitalized on a Ward (Paediatric, psychiatric or other), it functions with extremely limited resources (a consultant psychiatrist and a doctor in psychiatric training) and therefore needs an efficient triage procedure. Several triage tools were internationally developed for dealing with emergencies; the difficulty was to find a triage tool that would be specific enough for a pediatric but that would also be useful for patients with Mental Health issues. The purpose of this article is to review existing triage tools, and especially the 2016 Irish Children’s Triage System (ICTS) and to discuss how we believe this triage tool could respond to our specific needs in this new ‘out of hours’ CAMHS cover for Waterford/Wexford area.



Biography:

Anne-Frédérique Naviaux is a Consultant Psychiatrist and Child Psychiatrist, who finished her Master in Psychiatry in 2004 (Universite Catholique de Louvain, Belgium). She worked in France as a ‘praticien hospitalier’ in Child Psychiatry and for the World Health Organization, before joining the Research Department in Trinity College (Dublin, Ireland) in 2011. She has been a Lecturer in France (IFSI) since 2004 but has also joined the College of Psychiatrists of Ireland in 2012. She currently works for the Health Service Executive in Ireland as Head of Service in Summerhill Adult Mental Health Centre (Wexford) and as Clinical Lead for Liaison Psychiatry in Wexford General Hospital (WGH). Since 2016, she has been developing in collaboration with the Paediatric Team in WGH and University Hospital Waterford, an out of hours emergency service for young people with Mental Health Issues.

Speaker Publications:

1. “Quantity does not equal quality: Scientific principles cannot be sacrificed”; June 2020 *International Immunopharmacology* 86:106711.
2. “La pandémie du Covid-19: surdosage médiatique, craintes et bientôt antonomase? Une pandémie exposant deux”; June 2020 *Annales Médico-psychologiques revue psychiatrique*.
3. “Response-Ability Facing Covid-19: A Matter of Psyche, Behavior and Civism”; May 2020.
4. “Medico-psychological aspects relating to the coronavirus epidemic (Covid-19): the contribution of the theory of signal detection and the concept of place of control”; March 2020 *Annales Médico-psychologiques psychiatric journal* 178 (3): 223-225.
5. “Management of ARFID (Avoidant Restrictive Food Intake Disorder) in a 12-year-old on a Paediatric Ward in a General Hospital: Use of Mirtazapine, Partial Hospitalization Model and Family Based Therapy”; September 2019 *Psychiatria Danubina* 31(Suppl 3):421-426.

[5th International Conference on Pediatrics and Pediatric Surgery](#); Rome, Italy- March 11-12, 2020.

Abstract Citation:

Anne-Frédérique Naviaux, ARFID (Avoidant/Restrictive Food Intake Disorder): Latest literature review and current pharmacological treatment options, *Pediatrics Surgery* 2020, 5th International Conference on Pediatrics and Pediatric Surgery; Rome, Italy- March 11-12, 2020. <https://pediatrics.insightconferences.com/abstract/2020/triage-of-children-with-mental-health-difficulties-presenting-in-a-e-in-a-general-hospital>