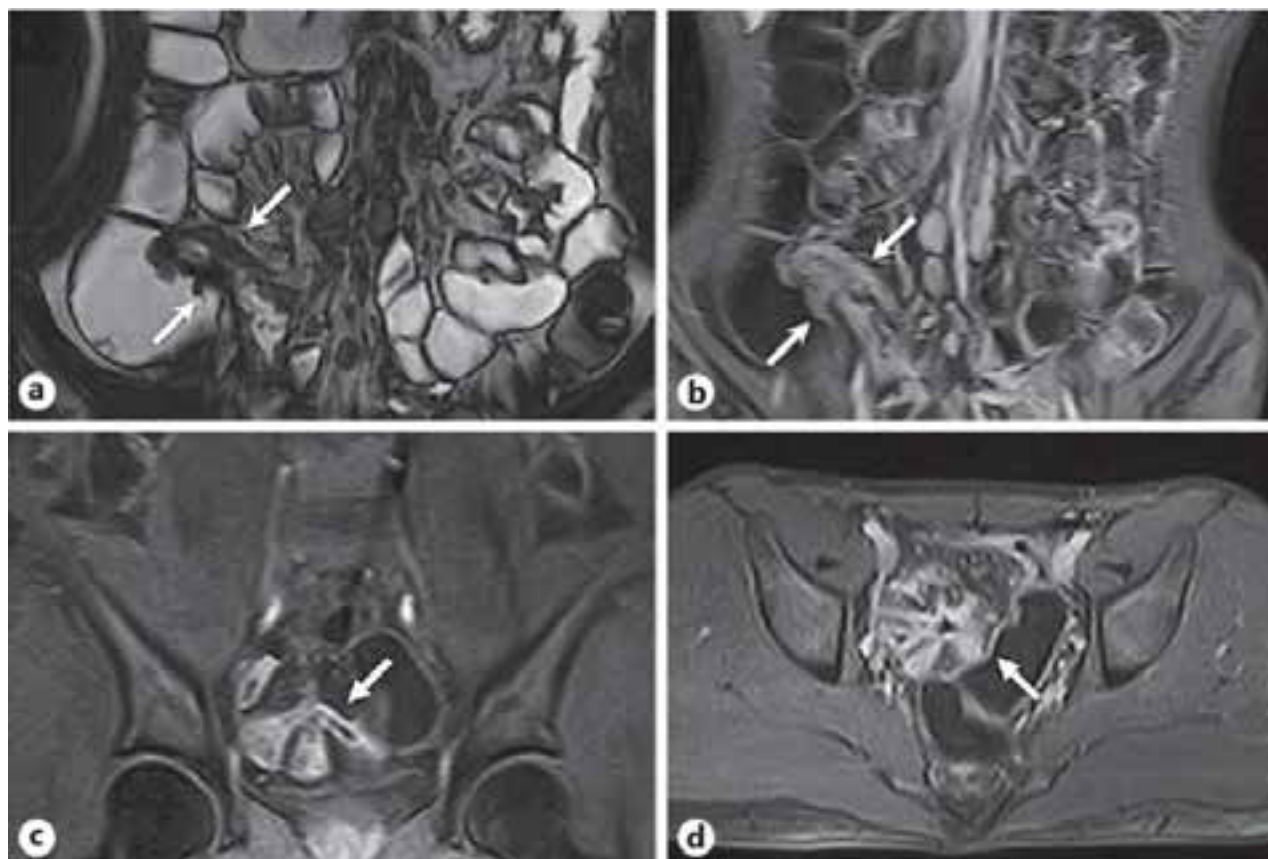


## Progressing Magnetic Resonance Imaging in Crohn's Disease

Liza Albert\*

Department of Medicine, Keck School of Medicine, University of California, USA



The appropriate imaging methodology should be reproducible, all around endured, protected and free of ionizing radiation. Lately, imaging utilized in CD has significantly changed. Cross-sectional imaging procedures, for example, processed tomography and attractive reverberation imaging (MRI) are utilized to explore extra luminal anomalies, yet in addition intraluminal changes. As of late, new strategies, for example, MR enteroclysis, enterography, colonography and enterocolonography have been created. These new advances empower the utilization of MRI to evaluate inside

problems with high affectability, explicitness and precision. X-ray can assess all the while the gut surface, gut divider, stomach abscesses and perianal sores, for example, perianal fistulae and perianal abscesses, without the issue of covering gut circles. In this manner, MRI has the potential for assessment of the general infection movement of CD without radiation introduction. We accept that MRI is an appropriate best option imaging methodology in the evaluation of CD.

**Correspondence to:** Liza Albert, Department of Medicine, Keck School of Medicine, University of California, USA, E-mail: albertliza@gmail.com

**Received:** December 19, 2020; **Accepted:** December 24, 2020; **Published:** December 30, 2020

**Citation:** Albert L (2020) Progressing Magnetic Resonance Imaging in Crohn's Disease. J Med Diagn Meth 9:309. doi: 10.35248/2168-9784.2020.9.309

**Copyright:** © 2020 Albert L. This is an open-access article distributed under the terms of the Creative Commons Attribution License, which permits unrestricted use, distribution, and reproduction in any medium, provided the original author and source are credited.