

Penile Implant Prosthesis

Evelyn K*

Longdom Group SA, Avenue Roger Vandendriessche, 18, 1150 Brussels, Belgium

MEDICAL IMAGE

This type of implant is hydraulic with two attached cylinders; a reservoir and a pump which are placed surgically.

For the first time; the cylinders are inserted in the penis before connected by tubing to a separate reservoir of fluid.

The albuginea of the corpora is exposed, followed by the urethra, which can be easily recognized by palpating a previously placed catheter.

The corpora cavernosa are opening (2 cm) on their ventral side and we practice serial dilations with Hegar's dilators. We choose the correct size of each cylinder after measurement of the corporal length.

We made an alignment of the cylinders in the right axis of the penis (cf picture) the selected cylinders are inserted into the corpora distally and the proximal part is pushed down.

Any mistake in choosing the correct cylinder size will result in a complication.

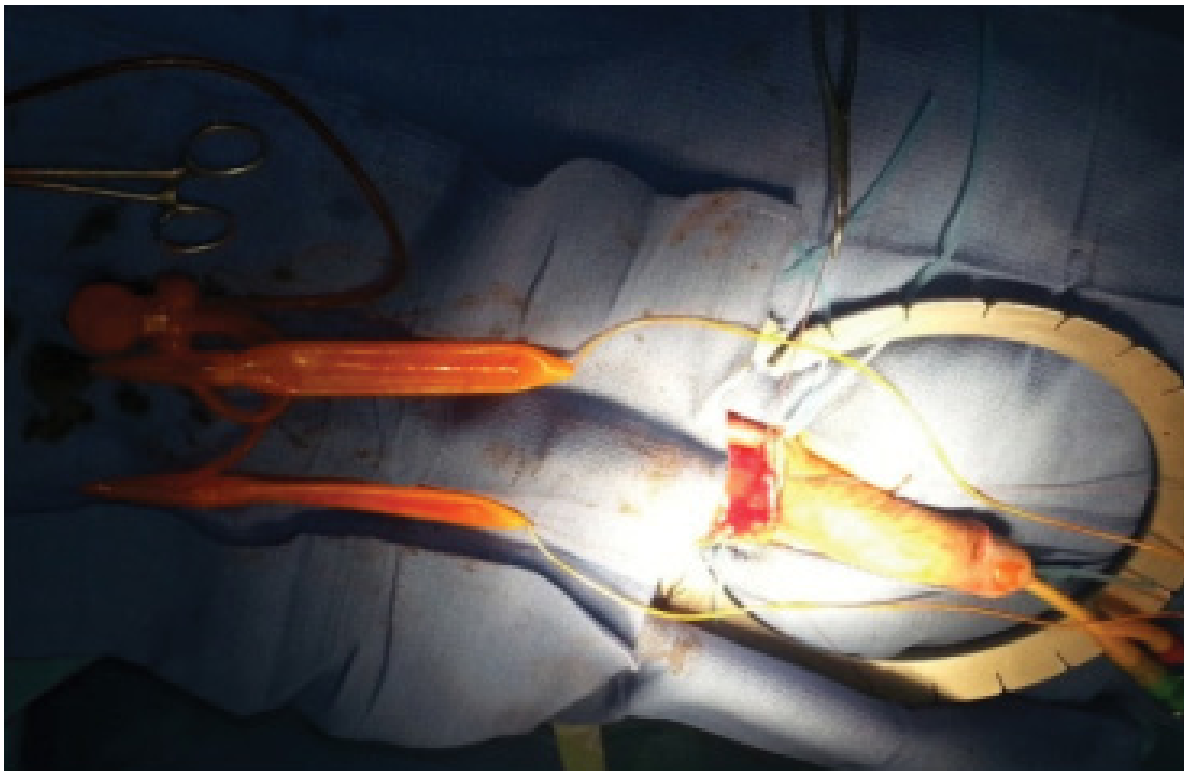


Figure 1: Insertion of cylinder penile implants prosthesis.

Correspondence to: Evelyn K, Professor, Longdom Group SA, Avenue Roger Vandendriessche, 18, 1150 Brussels, Belgium, E-mail: info@longdom.org

Received: December 22, 2020; **Accepted:** December 23, 2020; **Published:** December 28, 2020

Citation: Evelyn K (2020) Penile Implant Prosthesis. *Andrology* (Los Angel). 9:205.

Copyright: ©2020 Evelyn K. This is an open-access article distributed under the terms of the Creative Commons Attribution License, which permits unrestricted use, distribution, and reproduction in any medium, provided the original author and source are credited.