

Medicago sativa L. β -Amylase Core Promoter has Motifs in Common with *Arabidopsis* Key Starch Degradation Genes

Brett Fugate¹, Denise Medrano¹, Joyce Ache Gana^{1*}, Aida Abraha¹ and Suzanne M Cunningham²

¹Chicago State University, Biological Sciences Department, 9501 S. King Drive/SCI 310, Chicago, IL 60628, USA

²Purdue University, Department of Agronomy, 915 West State Street, West Lafayette, IN 47907-2054

Abstract

β -amylase is an enzyme involved in the degradation of transitory starch in photosynthetic tissues of plants and is expressed in high levels in the roots of *Medicago sativa* L. How the β -amylase gene *MsBAM1* is regulated in the roots is not clear. The aims of this study were to: isolate the core promoter of *MsBAM1*, decipher motifs *in silico* that are associated with the elevated root specific response, and to find common motifs among core promoters of important starch degradation genes in *Medicago sativa* *MsBAM1* and *Arabidopsis* (*AtGWD*, *AtPWD*, *AtMEX1*, *AtBAM 1 & 3*, and *AtISA3*). Primers were designed from homologous β -amylase genes and used in PCR with *M. sativa* gDNA. Gel purified PCR band(s) were sequenced, verified and annotated. The starch genes and equal numbers of *Arabidopsis* non-starch genes promoters were analyzed by the transcription factor binding site database (PLACE). Motif frequencies between starch and non-starch genes were statistically analyzed. A TATA-box motif was identified in the *MsBAM1* core promoter. Chi-square and Fisher's exact test analyses revealed significance of the frequency of the motifs ROOTMOTIFTAPOX1 (RMP1) and GATABOX (GATA) between starch and non-starch genes, but not the DOF motif. The RMP1 and GATA motifs were detected in *MsBAM1* and in all the *Arabidopsis* starch degradation genes but only in a few of the non-starch genes. However, the DOF motif was found in all starch and non-starch degradation genes in similar frequencies. These motifs may work in combination with other known cis-regulatory elements to confer root-enhanced expression in alfalfa roots and co-transcriptional regulation in the starch degradation pathway.

Keywords: Alfalfa; *Arabidopsis*; β -amylase; Bioinformatics; Cis-regulatory elements; Core promoter; *Medicago sativa*; Motifs; Roots; Starch degradation genes

Abbreviations: BP: Base Pairs; *MsBAM1*: *Medicago sativa* β -amylase1; gDNA: Genomic DNA; *AtGWD*: *Arabidopsis Thaliana* Glucan Water Dikinase; *AtBAM*, *Arabidopsis Thaliana* β -Amylase; *AtISA3*, *Arabidopsis Thaliana* Isoamylase3; ADH: Alcohol Dehydrogenase; CAD: Cinnamyl Alcohol Dehydrogenase; RMP1: ROOTMOTIF TAPOX1; GATA: GATABOX motif; DOF: DNA Binding with One Finger Family motif; TSS: Transcription Initiation Site; CHO; Carbohydrate

Background

Grown worldwide, *Medicago sativa* L. (alfalfa) is a nitrogen-fixing legume, and is an important crop in the ecosystem [1]. *M. sativa*'s growth and development is partly due to its taproot biology that stores high amounts of starch that is utilized in times of need such as re-growth after winter or defoliation. Starch metabolism is a physiologically conserved function of virtually all higher plants and algae [2]. Evidence of the starch degradation pathway is relatively easy to model in photosynthetic tissues because the process occurs within a diurnal cycle [3]. Thus, the transitory starch that accumulates in the chloroplast during the day is subsequently degraded at night to the sugars maltose and glucose that are exported into the cytosol [3-5]. In the cytosol, these simple sugars are converted into sucrose for transport throughout the plant in order to maintain cellular metabolism. Sucrose is converted back into starch in non-photosynthetic tissues for storage purposes [3,6].

Stored starch is typically associated with the amyloplasts of non-photosynthetic tissues. Unlike transitory starch, stored starch is degraded over periods of time such as an entire season or during periods of shoot re-growth after defoliation [7-11]. During the growth months (spring and summer) *Lathyrus maritimus* (beach pea) accumulates high levels of starch in the amyloplasts found in its root nodules [9]. This

starch is depleted throughout the non-growth months (winter) [9]. In the taproots of *M. sativa* the concentration of stored starch declines and accumulates within about one month of defoliation [10]. Once sufficient amounts of leaves have been re-established, the levels of carbon and nitrogen reserves in the taproot are replenished [12-14]. This storage and recycling of nutrients play a crucial role in both winter survival and shoot re-growth [11,14-16]. Storage and breakdown of starch in *M. sativa* roots is a necessity for its survival [17]. The enzymes responsible for starch mobilization from the amyloplast in alfalfa taproots after defoliation have not been thoroughly characterized compared to what is known for transitory starch degradation in *Arabidopsis* [3,4,6,18]

β -amylase is one enzyme that plays an important role in the starch degradation pathway of transitory starch in photosynthetic tissues [3]. It is ubiquitous in plants; however, its expression varies from tissue to tissue [3,19]. *Arabidopsis* has nine unique β -amylase genes subdivided into four different gene families [10,20]. Currently only one β -amylase gene has been described in *M. sativa* (*MsBAM1*) [10]. The transcript for *MsBAM1* disproportionately accumulates in *M. sativa* taproots in contrast to its leaves or stems [10]. The role of this β -amylase in *M. sativa* taproots is unclear and cis regulatory elements within core and

***Corresponding author:** Joyce Ache Gana, Chicago State University, Biological Sciences Department, 9501 S. King Drive / SCI 310, Chicago IL 60628, USA Tel: 773- 995-2430; E-mail: jgana@csu.edu

Received January 17, 2014; **Accepted** March 23, 2014; **Published** March 31, 2014

Citation: Fugate B, Medrano D, Gana JA, Abraha A, Cunningham SM (2014) *Medicago sativa* L. β -Amylase Core Promoter has Motifs in Common with *Arabidopsis* Key Starch Degradation Genes. J Plant Biochem Physiol 2: 124. doi:10.4172/2329-9029.1000124

Copyright: © 2014 Fugate B, et al. This is an open-access article distributed under the terms of the Creative Commons Attribution License, which permits unrestricted use, distribution, and reproduction in any medium, provided the original author and source are credited.

| Primer | Sequence 5' - 3' | T _m | % GC | Amplicon Size (bp) |
|-------------|---------------------------|----------------|------|--------------------|
| MtBAM2010F1 | TTGTGGATTAAGTACCCCTCCCTCC | 66.2 | 52.0 | 430 |
| MtBAM2010R1 | ATGAGGACTTACTGGGAGCATGACA | 64.6 | 48.0 | |
| MtBAM2010F2 | AAGCCCCACTTCGTGACTTCAAAGC | 66.2 | 52.0 | 450 |
| MtBAM2010R2 | CGCCTGCTGCTCGTAGTTGCA | 66.5 | 61.9 | |
| MtBAM2010F3 | ACATCAAAGCCCCACTTCGTGAC | 64.6 | 52.2 | 560 |
| MtBAM2010R3 | TCCTGGTCCCTAATACCGGAGCG | 68.1 | 60.9 | |

Table 1: Designed primers from the *M. truncatula* β -amylase sequences and amplicon sizes.

proximal promoter may help provide insight as to how expression of this gene is regulated in *M. sativa* roots to achieve the higher transcript levels observed. Edner et al., [21] demonstrated interdependence of some *Arabidopsis* starch enzymatic activities encoded by genes such as: *AtBAM1&3*, and *AtGWD*. Comparisons of the cis-regulatory elements within the promoter regions of *Arabidopsis* starch degradation genes with that of *MsBAM1* will be useful in deciphering the function of *MsBAM1* in alfalfa tap roots. The objectives of this study were to: a) isolate and annotate the *MsBAM1* core promoter region, b) determine if any of the motifs predicted *in silico* are associated with an elevated root specific response, and c) identify motifs from the *MsBAM1* core promoter in this study that are common in *Arabidopsis* key starch degradation genes (*AtBAM1&3*, *AtGWD*, *AtPWD*, *AtMEX1* and *AtISA3*).

In this report, the core promoter of *MsBAM1* was identified by the presence of the canonical TATA box. The length of the first intron of *MsBAM1* was determined and known motifs such as RMP1, GATA and DOF were identified. The DOF motif known to be involved in light, phytohormones and pathogen signaling [22] was found in all starch and non-starch degradation genes in similar frequencies. However, RMP1 and GATA were found to be significantly present in starch promoters compared to non-starch promoters. These motifs may work in combination with other known cis-regulatory elements to confer root-enhanced expression in alfalfa roots and co-transcriptional regulation in the starch degradation pathway.

Materials and Methods

Plant material and DNA Isolation

Plants of *Medicago sativa* (Pioneer cv 5454), *Medicago truncatula* (cv Serena), and *Glycine max*, (cv Williams 82) were used for this study. Seeds were sown in a soil mix containing 2:1 parts sand:silty clay loam in 1-liter pots and grown at an average temperature of 25°C in a 16 hour photoperiod. The plants were watered with deionized water as needed and minus-nitrogen Hoagland Nutrient Solution (50 mL) was administered bi-weekly. Three-week-old shoots of all three species were harvested and ground to a fine powder in liquid nitrogen using a mortar and pestle and weighed. Total gDNA was isolated with the Qiagen DNeasy kit following the manufacturer's protocol (Qiagen, Germantown, MD). Genomic DNA was quantified using the HT-Multi-Plate Reader (BioTek, Winooski, VT). The integrity of the gDNA was checked by 1.5% agarose gel electrophoresis, and the image captured using a Fluro-S multi-imager (BioRad, Hercules, CA). The gDNAs were stored at -20°C until needed.

Bioinformatics analysis

Although the *M. sativa* β -amylase full-length cDNA sequence (*MsBAM1*, GenBank Accession number AF026217) was previously characterized by [10], its promoter region remained elusive. Therefore, a combination of bioinformatics and molecular biology strategies were

employed to isolate and identify the *MsBAM1* promoter region. The BLASTN algorithm was used to perform searches of sequences having homology to the *MsBAM1*, in the GenBank, this search revealed several plant species with similarity to the *MsBAM1* cDNA. These included β -amylase(s) from *Hordeum vulgare* (barley), *Arabidopsis thaliana*, *Impomea batatas* (sweet potatoes), *G. max* (soybean), and *M. truncatula*. Only those with genomic equivalents were selected for further study. There were two criteria used to help limit the search: 1) selected organisms should have gDNA sequences of β -amylase with 500 or more base pairs upstream of the initiation codon to ensure that a core promoter would reside in the vicinity and 2) the selected species should have > 90% nucleotide identity to *MsBAM1* to ensure that a primer designed from selected homologous β -amylases would have specificity in *M. sativa*.

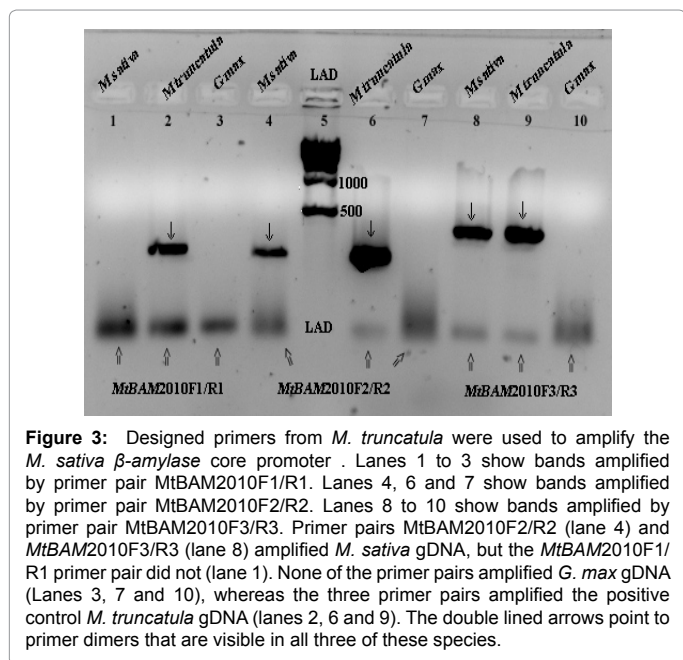
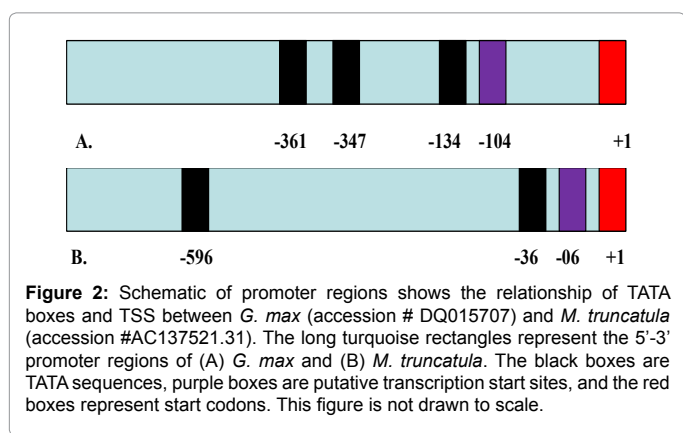
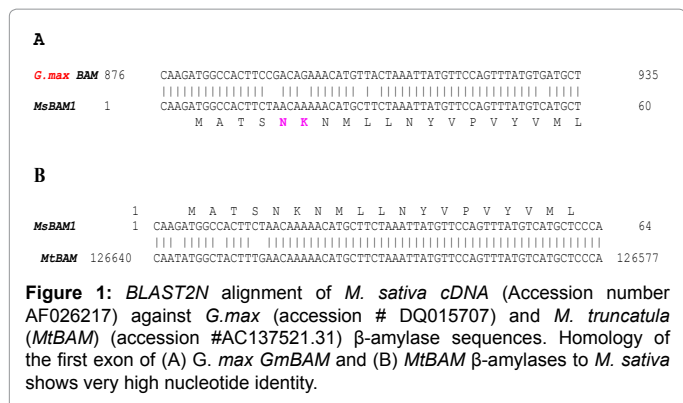
Upon identification of candidate(s) that met the two above criteria, pair wise comparisons were done between the candidate(s) and *MsBAM1* using BLASTN, with the formatting option "CDS feature" selected in order to display the amino acid sequences. This step was a direct action to more precisely define the region upstream of the initiation codon in the various selected homologous β -amylase genes. Finally, in order to identify the core promoter within the upstream regions from the selected species, Promoter Scan software was used (BIMAS). Nucleotides 800 bp upstream of their respective initiation codons were submitted for primer design.

Primer design

Having defined the putative core promoter regions of selected β -amylase candidate sequences *in silico*, Primer BLAST was used for primer design (Primer BLAST). Although two candidates of homologous β -amylase were selected for primer design, only primers from *M. truncatula* were selected for further molecular assays. These primers are listed in Table 1. The *M. truncatula* β -amylase sequence is found within a large unannotated DNA fragment of 291,529 base pairs in the Gene Bank (accession # AC137521.31) in the reverse orientation. Therefore reverse complement analysis was performed utilizing online tools on the sequences that corresponded to *M. truncatula* β -amylase in order to subject the sense strand for annotation and primer design.

Polymerase Chain Reaction

PCR was used to amplify gDNAs of *M. sativa*, *M. truncatula*, and *G. max* with the *M. truncatula* specific primers that were designed. The PCR reactions were assembled by adding 100 ng of a specific species gDNA (50 μ g/ml), 20 μ M forward and reverse primers, 200 μ M dNTP, 1.5 U of TripleMaster enzyme mix (Eppendorf -5 Prime, Boulder, CO), 1X high fidelity reaction buffer, and sterile nanopure water to a final reaction volume of 50 μ l. Amplifications were performed in a gradient thermal cycler (Eppendorf AG, Hamburg, Germany) with the following thermal cycling parameters: 94°C for 5 min, followed by 30 cycles at 94°C for 1 min, 55°C for 2 min, and 72°C for 2 min. A final 5 min extension step was done at 72°C with a holding temperature at 4°C. Samples were subjected to 2 % agarose gel electrophoresis in 1X TAE buffer. The gel images were captured with a Fluro-S multi-imager (BioRad, Hercules, CA). The band(s) of interest were directly purified from the agarose gel by following a standard protocol for gel extraction (Qiagen, Germantown, MD) and quantified with the HT-Multi-plate Reader (BioTek, Winooski, VT). Annealing reactions were assembled by mixing 10 ng of gel eluted DNA solution with 4 μ M of a specific forward primer (MtBAM2010F2 or MtBAM2010F3) and reverse primer (MtBAM2010R2, MtBAM2010R3) (see Table 1) in 1.5 ml tubes. The sequencing was accomplished by Mount Desert Island Biological Lab (Salisbury Cove, Maine).



Annotation of putative promoter region and statistical analysis

Annotation of the promoter region of the *M. sativa* *MsBAM1* was done *in silico* with the Transcription Element Site Search (TESS), and PLACE. The lists of predicted motifs from TESS and PLACE were compared to a list of motifs that [23] identified for NUCLEAR-

ENRICHED PHLOEM COMPANION CELL (NPCC) genes that are expressed predominantly in the roots of *Arabidopsis*. In addition, to find motifs among key starch degradation genes in *Arabidopsis* in common with *MsBAM1*, the sequences of these *Arabidopsis* starch degradation genes were retrieved: *AtGWD*, *AtBAM 1 & 3*, *AtPWD*, *AtMEX1*, and *AtISA3* from the Gene Bank. For negative controls, seven non-starch genes of *Arabidopsis* were included in the analysis (Figure 6). From each gene 300 bp upstream and 33 bp downstream from the first nucleotide of the start codon were utilized to be certain the core promoter (TATA, INR, DPE) and proximal promoter regions resided in this range of base pairs as is seen in many eukaryotic genes [24].

PLACE annotated these 333 bp sequences in a similar manner to the newly revealed β -amylase *M. sativa* core promoter sequences. Chi-square analysis was performed on the motifs of interest in order to determine significance of the motifs in context to starch and non-starch degradation genes utilized in this study. To satisfy the criteria for chi-square analysis, combined total frequencies of starch gene and non-starch gene motif, to perform a 2x2 table, were performed. The data was also analyzed by Fisher's exact test. The calculated motif expected frequency was a 1:1 ratio for starch genes versus non-starch genes.

Results

MsBAM1 Homologous Genes

Figures 1A and 1B highlight the BLASTN comparisons of exon I of the *MsBAM1* to corresponding exon(s) of *M. truncatula* and *G. max* that show 94% and 90% similarity with *MsBAM1*, respectively. Figure 2 shows an illustration of the annotated promoter regions of *M. truncatula* and *G. max*. Annotations were used to focus on specific regions where primers might be designed in the search for the *M. sativa* core promoter.

The designed primers (Table 1) yielded single amplified bands for *M. sativa* and *M. truncatula* (Figure 3). The MtBAM2010F1/MtBAM2010R1 primers amplified a band (~ 430 bp) only from *M. truncatula* gDNA (Figure 3, Lane 2). However, the MtBAM2010F2/MtBAM2010R2 (Lanes 4 and 6) and MtBAM2010F3/ MtBAM2010R3 primer combinations (Lanes 8 and 9) amplified bands from both *M. sativa* (~ 450 bp) and *M. truncatula* gDNAs (~ 560 bp) (Figure 3). No bands appeared for any set of primers with the *G. max* samples (Figure 3, Lanes 3, 7 and 10). The bands in the lanes of both *M. sativa* and *M. truncatula* from the primers MtBAM2010F2/ MtBAM2010R2 and MtBAM2010F3/MtBAM2010R3 (Figure 3) were sequenced. The sequences from both amplicons were identical where they overlapped in the internal sequences. Therefore, only the sequence from the band amplified from *M. sativa* by the primer combination MtBAM2010F2/ MtBAM2010R2 was submitted to the GenBank because of the longer size of its upstream region. It has a GenBank accession number #JQ397635.1 with the gene name of *MsBAM1*.

Characteristics of the *MsBAM1* core promoter

BLASTN was used to verify the authenticity of the sequence (Figure 4; accession #JQ397635.1) derived from *M. sativa* gDNA using *M. truncatula* β -amylase designed primers. The length of 226 base pairs of non-overlapping new sequence lying upstream of the cDNA sequences from this BLASTN analysis was noted (Figure 4 and 5). Serendipitously, the first intron was identified with a length of 96 base pairs. The first intron contains the typical 5' conserved GU intron donor splice site as well as the conserved 3' AG acceptor splice site (Figure 4) [25]. Online promoter prediction tools revealed that the 226 base pair sequence does harbor a promoter showing the canonical TATA box (TATAAA)

```

CTCTTTATATAAGCCCATTTTGTGTTTAAACGCAATCAATAATTTATAC
GTCCCATACCTTTATACATTTAACTTTTATTGTGTCGTTCAAAAC
AAAACAAAAAATTTTATTTGTGGCGAATATCAATCTCTGTATCTT
TCATAATCAATAGGTATGAGATACTTTGATATTCACCTCAAGTATA
TATA box
AATAGA AACG GCAAGCAACAAGATGCTTACT
*TSS *TSS +1 Start codon
TTGAACAAAAACATGCTTCTAAATTATGTTCCAGTTTATGTCATGCT
CCCACTAAGTCCTCATACACATAAACTACTGTGTTGTAAGCTCACA
AATATGTTGTTGTTCACTAATATTAACATATGTTTCATTGTTTTTCT
TCGTAGCTCGGAGTTATTAATGTCAATAATGTCTTCGAAGACCCAGA
TGACTAGAACTCCGANCA
    
```

Figure 4: Nucleotide sequence of the *MsBAM1* core promoter region (Accession JQ397635) with signature motifs. The sequence shows a TATA box at -42, a consensus TSS at -30 and another consensus TSS at -20 from the start codon considered in this sequence as the +1 position. The magenta highlight is intron #1 (96bp) with consensus 5' and 3' border sequences. TATAAA is highlighted and identified with bold font. The underlined portion harbors the core promoter region. The bold font downstream of the underlined region is the start codon (ATG) also seen in the cDNA (AF026217). The italicized sequence (including the ATG) is the coding region for exon 1 followed by 96 base pairs of intron 1, followed by part of Exon 2.

```

Query 227 CAAGATGCTACTTTGAAACAAAACACGCTTCTAAATATGTTCCAGTTTATGTCAGCT 286 JQ397635.1
Sbjct 1 CAAGATGCTACTTTCTAACAAAACACGCTTCTAAATATGTTCCAGTTTATGTCAGCT 60 AF02617

Query 287 CCCA 290 JQ397635.1
Sbjct 61 CCCA 64 AF02617

Query 387 CTCGGAGTTATTAATGTCATAAATGTTTCGAAACCCAGATG 429 JQ397635.1
Sbjct 65 CTCGGAGTTATTAATGTCATAAATGTTTCGAAACCCAGATG 107 AF026217
    
```

Figure 5: BLAST2N comparison of *MsBAM1* core promoter region (Accession JQ397635) to the corresponding cDNA sequence (AF026217). The two sequences show high homology where they overlap in the coding region.

located at a position 42 base pairs upstream of the start codon (-42) (Figure 4) [25]. In addition, a number of variant TATA boxes are also predicted further upstream of the canonical TATA Box at positions -119, -154, -167, -184, and -224, respectively. Several CAAT boxes are predicted within this core promoter region at positions -78, -100, -192, and -196, respectively (Figure 4). Two motifs upstream of the start codon (+1) (ATG) at positions -20 and -32 both fit the description of a Transcription Start Site (TSS) consensus. Gana et al., [10] previously defined the four bases ahead of the ATG (CAAG) as part of the cDNA. The JQ397635.1 sequence shows 94% identity to the overlapping region of the *M. sativa* β -amylase cDNA sequence (accession # AF026217) corresponding to the entire exon 1 as well as 100% identity to a partial region of exon 2 (Figure 5).

MsBAM1 and *Arabidopsis* Starch Degradation Genes have Common Motifs

In addition to the basic motifs that characterize the core promoter, as described above, specific motifs that may explain the root enhanced expression of *MsBAM1* as well as motifs that are predominant in starch degradation genes compared to non-starch genes were found. PLACE predicted abundant similar motifs for the *MsBAM1* core promoter region along with key *Arabidopsis* starch degradation genes. Specifically, PLACE predicted 48 unique motifs for *MsBAM1*, 49 for *AtBAM1*, 42 for *AtBAM3*, 44 for *AtGWD*, 53 for *AtMEX1*, 46 for *AtPWD*, and 44 for *AtISA3*. Table 2 shows motifs that were predicted for *M. sativa* that also were predicted in the starch degradation pathway genes of *Arabidopsis*. For example, the root specific motif RMP1 (ATATT) is located 175 base pairs upstream from the +1 start codon in *MsBAM1* [26,27]. RMP1 and GATA motifs are found in higher proportion in starch compared to non-starch degradation genes (Figures 6A and C). In contrast, the DOF motif (CTTT or AAAG) is similar in frequency in all starch and non-starch genes (Figures 6B and D). Besides the three common motifs of interest that are mentioned above, an anaerobic response element AAACAAA was predicted in *M. sativa* and in most of *Arabidopsis* starch promoters. The *Arabidopsis alcohol dehydrogenase* (*AtADH*) core promoter contains this anaerobic motif which is induced by anaerobic conditions [24,28,29]. *AtADH* was included in this study as one of the seven non-starch genes that was used as a negative control for comparisons to starch degradation genes.

Chi-square and Fisher's exact analyses revealed that GATA and RMP1 motif frequencies (Figures 6A and C) were highly significant between starch and non-starch genes. The Chi-square (P)=0.018<0.05 and Fisher exact (P)=0.017<0.05 led to the rejection of the null hypothesis that motif frequencies are equal between starch and non-starch genes in this study. Whereas, for the DOF motif frequencies (Figures 6B and D), Chi-square (P)=0.704>0.05 and Fisher exact (P)=0.724. Thus, the null hypothesis that frequencies are equal between starch and non-starch genes was not rejected.

Discussion

The main objectives of this study were two fold. Firstly, to isolate and annotate the core promoter of *MsBAM1* and to identify its motifs *in silico* in order to better understand enhanced expression of this gene in *M. sativa* roots. Secondly, to compare predicted motifs in *MsBAM1* to those in key starch degradation genes of *Arabidopsis* in order to identify common motifs that suggest co-transcriptional expression. Such co-transcriptional expression could partly explain the cooperation among starch metabolic pathway enzymes demonstrated in the literature. The 226 bp sequence obtained from this study fits the description of a core promoter region containing the minimal DNA elements that are necessary for transcription initiation [30]. The core promoter region lies adjacently upstream of the start codon and generally contains some type of motif or *cis*-regulatory element including, but not limited to a TATA-Box. Most of the basic motifs often found at specific locations upstream from the TSS(s) are revealed in this study, and the β -amylase core promoter in question meets the criteria of a core promoter (Figure 4).

β -amylase transcripts are highly abundant in the roots of alfalfa where a large reserve of starch is found [10]. The RMP1 motif is present in 95% of promoter regions of plant genes that are expressed in roots [23]. Elmayan and Tepfer [31] demonstrated that the *rolD* promoter of *Agrobacterium rhizogenes* has the RMP1 motif and is active in the roots of *Nicotiana tabacum* (tobacco). Two phosphate transporter promoters

| Plant Starch degradation Genes | CRE (motif) predicted | Factor or site name | Function in Plant Processes | Literature |
|-----------------------------------------------------------------------------------------------------------------|-----------------------|----------------------------------------|----------------------------------------------------------------------|--------------|
| <i>AtGWD</i> , <i>AtISA3</i> <i>MsBAM1</i> <i>AtMEX1</i> <i>AtPWD</i> | AAACAAA | SRY, HNF-3alpha, HNF-3beta, HNF-3gamma | Induces ADH in hypoxic, cold, and dehydration conditions | [24] |
| <i>AtGWD</i> , <i>AtISA3</i> , <i>AtBAM1</i> , <i>AtBAM3</i> , <i>AtMEX1</i> , <i>AtPWD</i> <i>MsBAM1</i> | AAAG | MNB1a (DOF) | Gene regulation of CHO metabolic genes, defense, germination | [23] |
| <i>AtGWD</i> , <i>AtISA3</i> , <i>AtBAM1</i> , <i>AtBAM3</i> , <i>AtMEX1</i> , <i>AtPWD</i> <i>MsBAM1</i> | GATA | GATABOX (GATA) | Light response, germination, greening, elongation growth, flowering, | [34] |
| <i>AtGWD</i> , <i>AtISA3</i> , <i>AtBAM1</i> , <i>AtBAM3</i> , <i>AtMEX1</i> , <i>AtPWD</i> <i>MsBAM1</i> | ATATT | ROOTMOTIFTAPOX1 (RMP1) | Root specific response | [31] [23] |

Table 2: Motifs in some key *Arabidopsis* starch degradation genes in common with *MsBAM1*.

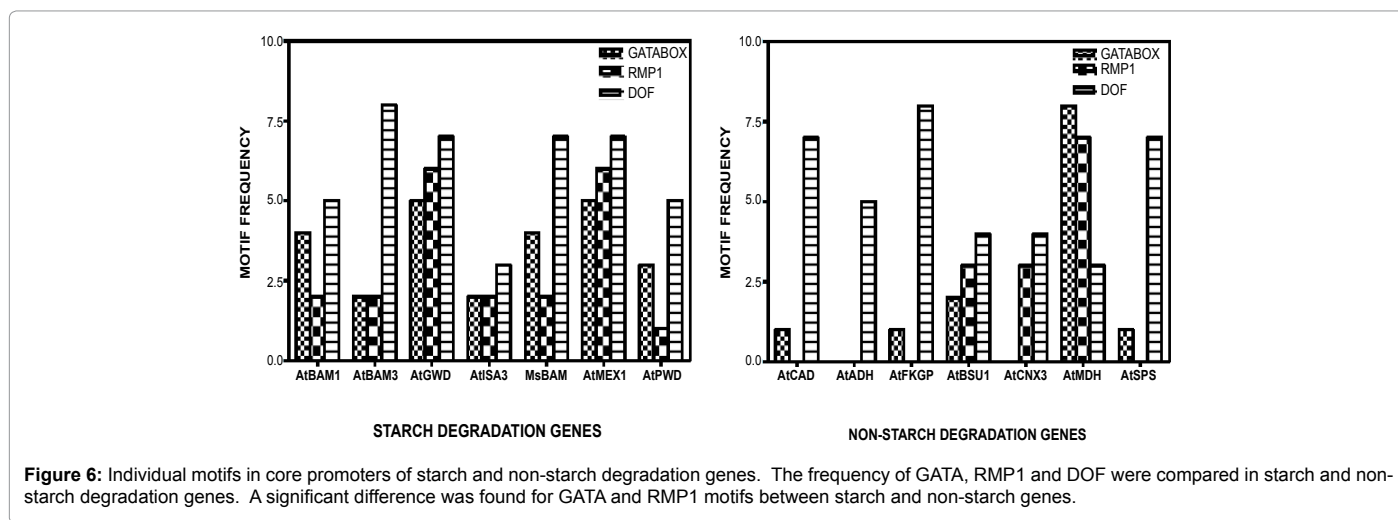


Figure 6: Individual motifs in core promoters of starch and non-starch degradation genes. The frequency of GATA, RMP1 and DOF were compared in starch and non-starch degradation genes. A significant difference was found for GATA and RMP1 motifs between starch and non-starch genes.

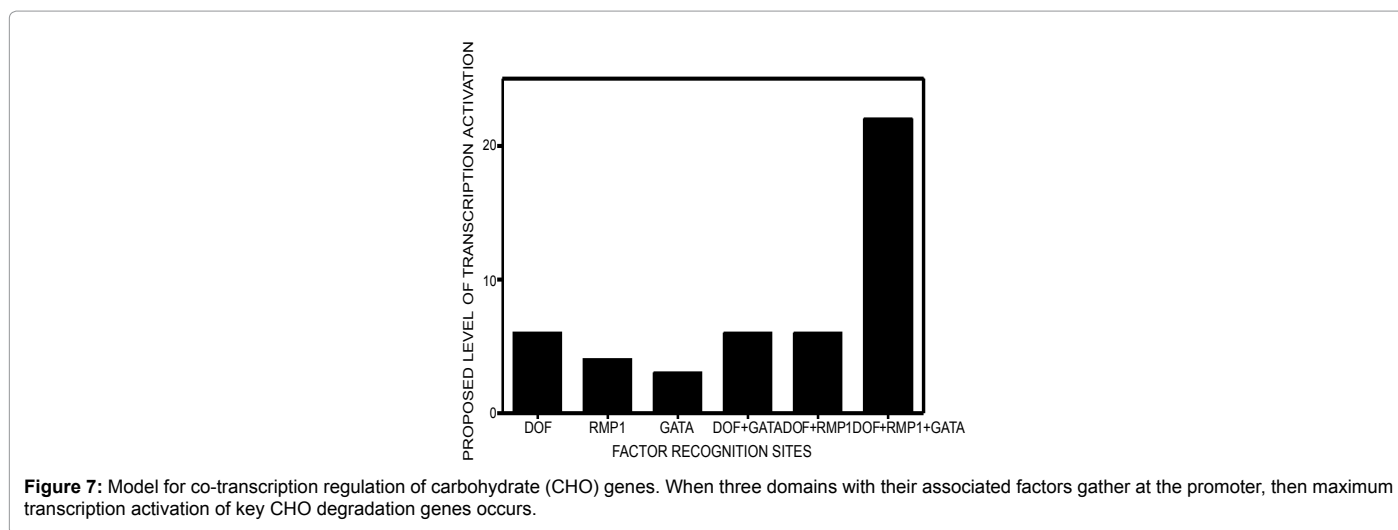


Figure 7: Model for co-transcription regulation of carbohydrate (CHO) genes. When three domains with their associated factors gather at the promoter, then maximum transcription activation of key CHO degradation genes occurs.

from *M. truncatula* have high frequencies of RMP1 motifs [32]. These promoters were demonstrated to drive root-specific expression of reporter genes [32]. The same RMP1 motif was predicted *in silico* in the β -amylase core promoter of *M. sativa* suggesting that it may play a role in the elevated levels of expression of β -amylase in root tissues. Therefore, the RMP1 motif in the *MsBAM1* promoter may explain the root-enhanced expression of β -amylase compared to lower transcript accumulation in leaves and stems [10].

GATA factors are found in all eukaryotes. There are 29 different types of GATA transcription factors found in *Arabidopsis* [33]. The GATA motif is involved in numerous processes such as: germination, nitrogen utilization, greening, elongation growth, flowering, and light responses [21,33,34]. Edner et al. [21] demonstrated the interdependence of key *Arabidopsis* recombinant enzymes (BAM 1 & 3, ISA3, GWD) working in collaboration to degrade starch. The cooperation of starch degradation enzymes may be facilitated, in part,

by the interaction of factors activating or repressing common motifs in their gene promoters resulting in a possible co-transcriptional regulation of starch degradation process. Since RMP1 and GATA were the only motifs predicted *in silico* that showed statistically significant differences in their frequencies in the core promoters of *MsBAM1* and *Arabidopsis* starch degradation genes (Figures 6A and C) compared to non-starch genes, it is possible that these motifs may reflect such co-transcriptional regulation. Another frequently occurring motif (AAAG) in both *Arabidopsis* and *M. sativa* was DOF (Figures 6B and D). DOF (DNA binding with One Finger) proteins are plant specific transcription factors [22]. DOF is involved in light, phytohormones and pathogen signaling, seed development and germination, and photosynthetic carbon assimilation [22,35,36]. During germination, starch degradation occurs and DOF may serve as a prime candidate for co-transcriptional regulation in combination with other motifs such as GATA. The GATA element is an essential partner with other light-regulated elements in light activated gene expression [33]. Because the DOF recognition sequence is present in high frequency in the *MsBAM1* core promoter it may contribute to the regulation of starch degradation in photosynthetic and non-photosynthetic tissues. However, it is questionable whether the DOF motif can function by itself in starch degradation genes because it was also found in high frequency in all of the seven negative controls (Figures 6B and D). Moreno-Risueno [36] showed DOF to be highly conserved in algae, eudicots, and monocots. Since DOF origins can be traced back to green algae, this implies conservation of some aspects of starch degradation in plants and algae [36].

Figure 7 is a proposed outcome of gene expression if DOF, GATA, RMP motifs work in combination to effect gene expression of starch degradation genes in *M. sativa* roots translated from information of *Arabidopsis* starch genes. It is possible that RMP1, GATA, and DOF motifs work in concert to regulate the starch degradation pathway in non-photosynthetic tissues. There is precedent for this hypothesis. Luo et al., [33] demonstrated that particular combinations of motifs in other plant processes play a role in gene regulation. The specific roles of the motifs in the *MsBAM1* core promoter and the manner in which they may function to achieve co-transcriptional gene regulation still needs to be studied.

Conclusions

In summary, the *M. sativa* *BAM1* core promoter has been identified. Three motifs (RMP1, GATA, and DOF) in this *MsBAM1* core promoter region are common with those found in the core promoters of the key starch degradation genes of *Arabidopsis*. The root specific motif, RMP, is present in the *MsBAM1* promoter and together with GATA is significantly different between starch and non-starch genes. These motifs may work in combination with other known *cis*-regulatory elements to confer root-enhanced expression in *M. sativa* roots and co-transcriptional regulation in the starch degradation pathway.

Acknowledgement

The Chicago State University Center for Teaching and Research Excellence Seed grant supported this work.

References

- Baldock JO, Higgs RL, Paulson WH, Jackobs JA, Shrader, WD (1981) Legume and mineral N effects on crop yields in several crop sequences in the upper Mississippi valley. *Agronomy Journal* 73: 885-890.
- Tetlow IJ, Morel MK, Emes MJ (2004) Recent developments in understanding the regulation of starch metabolism in higher plants. *J Exp Bot* 55: 2131-2145.
- Smith AM, Zeeman SC, Smith SM (2005) Starch degradation. *Annu Rev Plant Biol* 56: 73-98.
- Fettke J, Hejazi M, Smirnova J, Höchel E, Stage M, et al. (2009) Eukaryotic starch degradation: integration of plastidial and cytosolic pathways. *J Exp Bot* 60: 2907-2922.
- Servaites JC, Geiger DR (2002) Kinetic characteristics of chloroplast glucose transport. *J Exp Bot* 53: 1581-1591.
- Lloyd JR, Kossmann J, Ritte G (2005) Leaf starch degradation comes out of the shadows. *Trends Plant Sci* 10: 130-137.
- Boyce PJ, Volenec JJ (1992) Taproot carbohydrate concentrations and stress tolerance of contrasting alfalfa genotypes. *Crop Science* 32: 757-761.
- Boyce PJ, Penalzoza E, Volenec, JJ (1992) Amylase activities in roots of *Medicago sativa* L. and *Lotus corniculatus* L. following defoliation. *Journal of Experimental Botany* 43: 1053-1059.
- Chinnasamy G, Bal AK (2003) Seasonal changes in carbohydrates of perennial root nodules of beach pea. *Journal of Plant Physiology* 160: 1185-1192.
- Gana JA, Kalengamaliro NE, Cunningham SM, Volenec JJ (1998) Expression of beta-amylase from alfalfa taproots. *Plant Physiol* 118: 1495-1506.
- Habben JE, Volenec JJ (1990) Starch Grain Distribution in Taproots of Defoliated *Medicago sativa* L. *Plant Physiol* 94: 1056-1061.
- Graber L, Nelson N, Leukel W, Albert W (1927) Organic food reserves in relation to the growth of alfalfa and other perennial herbaceous plants. *Agricultural Experiment Station of the University of Wisconsin Research Bulletin* 80.
- Hendershot KL, Volenec JJ (1993) Nitrogen pools in taproots of *Medicago sativa* L. after defoliation. *Plant Physiology* 141: 129-135.
- Smith, D (1962) Carbohydrate taproot reserves in alfalfa, red clover and birdsfoot trefoil under several management schedules. *Crop Science* 2: 75-78.
- Fankhauser JJ, Volenec JJ, Brown GA (1989) Composition and Structure of Starch from Taproots of Contrasting Genotypes of *Medicago sativa* L. *Plant Physiol* 90: 1189-1194.
- Rapoport HF, Travis RL (1984) Alfalfa root growth, cambial activity and carbohydrate dynamics during the regrowth cycle. *Crop Science* 24 :899-903.
- Volenec JJ, Boyce PJ, Hendershot KL (1991) Carbohydrate Metabolism in Taproots of *Medicago sativa* L. during Winter Adaptation and Spring Regrowth. *Plant Physiol* 96: 786-793.
- Zeeman SC, Kossmann J, Smith AM (2010) Starch: its metabolism, evolution, and biotechnological modification in plants. *Annu Rev Plant Biol* 61: 209-234.
- Fulton DC, Stettler M, Mettler T, Vaughan CK, Li J, et al. (2008) Beta-AMYLASE4, a noncatalytic protein required for starch breakdown, acts upstream of three active beta-amylases in *Arabidopsis* chloroplasts. *Plant Cell* 20: 1040-1058.
- Sparla F, Costa A, Lo Schiavo F, Pupillo P, Trost P (2006) Redox regulation of a novel plastid-targeted beta-amylase of *Arabidopsis*. *Plant Physiol* 141: 840-850.
- Edner C, Li J, Albrecht T, Mahlow S, Hejazi M, et al. (2007) Glucan, water dikinase activity stimulates breakdown of starch granules by plastidial beta-amylases. *Plant Physiol* 145: 17-28.
- Yanagisawa S (2004) Dof domain proteins: plant-specific transcription factors associated with diverse phenomena unique to plants. *Plant Cell Physiol* 45: 386-391.
- Zhang C, Barthelson RA, Lambert GM, Galbraith DW (2008) Global characterization of cell-specific gene expression through fluorescence-activated sorting of nuclei. *Plant Physiol* 147: 30-40.
- Mohanty B, Krishnan SP, Swarup S, Bajic VB (2005) Detection and preliminary analysis of motifs in promoters of anaerobically induced genes of different plant species. *Ann Bot* 96: 669-681.
- Lescot M, Déhais P, Thijs G, Marchal K, Moreau Y, et al. (2002) PlantCARE, a database of plant *cis*-acting regulatory elements and a portal to tools for *in silico* analysis of promoter sequences. *Nucleic Acids Res* 30: 325-327.
- Higo K, Ugawa Y, Iwamoto M, Korenaga T (1999) Plant *cis*-acting regulatory DNA elements (PLACE) database: 1999. *Nucleic Acids Res* 27: 297-300.
- Prestridge DS (1991) SIGNAL SCAN: a computer program that scans DNA sequences for eukaryotic transcriptional elements. *Comput Appl Biosci* 7: 203-206.

28. Dolferus R, Jacobs M, Peacock WJ, Dennis ES (1994) Differential interactions of promoter elements in stress responses of the Arabidopsis Adh gene. Plant Physiol 105: 1075-1087.
29. Peng HP, Chan CS, Shih MC, Yang SF (2001) Signaling events in the hypoxic induction of alcohol dehydrogenase gene in Arabidopsis. Plant Physiol 126: 742-749.
30. Zhang MQ (1998) A discrimination study of human core-promoters. Pac Symp Biocomput .
31. Elmayer T, Tepfer M (1995) Evaluation in tobacco of the organ specificity and strength of the rolD promoter, domain A of the 35S promoter and the 35S2 promoter. Transgenic Res 4: 388-396.
32. Xiao K, Liu J, Dewbre G, Harrison M, Wang ZY (2006) Isolation and characterization of root-specific phosphate transporter promoters from *Medicago truncatula*. Plant Biol (Stuttg) 8: 439-449.
33. Luo XM, Lin WH, Zhu S, Zhu JY, Sun Y, et al. (2010) Integration of light- and brassinosteroid-signaling pathways by a GATA transcription factor in Arabidopsis. Dev Cell 19: 872-883.
34. Richter R, Behringer C, Muller IK, Schwechheimer C (2010) The GATA-type transcription factors in GNC and GNL/CGA1 repress gibberellin signaling downstream from DELLA proteins and phytochrome-interacting factors. Genes and Development 24: 2093-2104.
35. Lijavetzky D, Carbonero P, Vicente-Carbajosa J (2003) Genome-wide comparative phylogenetic analysis of the rice and Arabidopsis Dof gene families. BMC Evol Biol 3: 17.
36. Moreno-Risueno MA, Martínez M, Vicente-Carbajosa J, Carbonero P (2007) The family of DOF transcription factors: from green unicellular algae to vascular plants. Mol Genet Genomics 277: 379-390.