

## Insertion of the Cylinders - Penile Implant Prosthesis

Sabri Dib\*

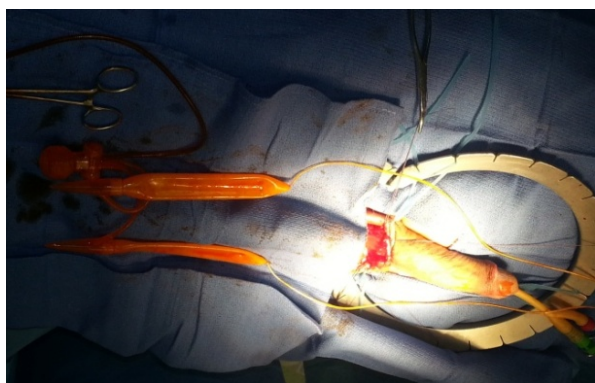
Chirurgien Urologue, Cité 'Le Sahel' - Bt A18, Kolea, W. Tipaza, Algeria

\*Corresponding author: Sabri Dib, Chirurgien Urologue, Cite 'Le Sahel'-Bt A18, Kolea, W. Tipaza, Algeria, Tel: +213 20 530 377; Fax: +213 24 483 085; E-mail: [dib96dz@yahoo.fr](mailto:dib96dz@yahoo.fr)

Received date: Mar 10, 2015, Accepted date: Mar 12, 2015, Published date: Mar 16, 2015

Copyright: © 2015 Dib S. This is an open-access article distributed under the terms of the Creative Commons Attribution License, which permits unrestricted use, distribution, and reproduction in any medium, provided the original author and source are credited.

### Medical Image



**Figure 1:** Insertion of the cylinders penile implant prosthesis.

This type of implant is hydraulic with two attached cylinders; a reservoir and a pump which are placed surgically.

In the first time; the cylinders are inserted in the penis before connected by tubing to a separate reservoir of fluid.

The albuginea of the corpora is exposed, followed by the urethra, which can be easily recognized by palpating a previously placed catheter.

The corpora cavernosa are opening (2 cm) on their ventral side and we practice serial dilatations with Hegar's dilators.

We choose the correct size of each cylinder after measurement corporeal length.

We made an alignment of the cylinders in the right axis of the penile (cf picture)

The selected cylinders are inserted into the corporea distally and the proximal part is pushed down.

Any mistake in choosing correct cylinder size will result complication.