

## Breast Cancer Can Occur in Both Men and Women but in Women It is Far More Severe

M Obulesu\*

Department of Materials Science, Graduate School of Pure and Applied Sciences, University of Tsukuba, Japan

### ABSTRACT

Cancer is a category of diseases that include an irregular growth of cells that can invade or spread to other parts of the body. Those contrast with benign tumours that do not spread. Cancer is an irregular development of the cells, sometimes called malignancy. About 100 types of cancer are found, including breast cancer, skin cancer, lung cancer, bowel cancer, prostate cancer, and lymphoma. Symptoms differ according to type. Treatment for cancer may include chemotherapy, radiation, and/or surgery.

Keywords: Breast cancer; Skin cancer; Lung cancer

### INTRODUCTION

Cancer is a category of diseases that include an irregular growth of cells that can invade or spread to other parts of the body. Those contrast with benign tumours that do not spread. Cancer is an irregular development of the cells, sometimes called malignancy. About 100 types of cancer are found, including breast cancer, skin cancer, lung cancer, bowel cancer, prostate cancer, and lymphoma. Symptoms differ according to type. Treatment for cancer may include chemotherapy, radiation, and/or surgery.

Breast cancer is cancer which is produced in breast cells. Breast cancer is the most common cancer diagnosed in females in the United States following skin cancer. Breast cancer can occur in both men and women but in women it is far more severe. Substantial support for education and research spending on breast cancer has helped to generate advances in breast cancer diagnosis and care. Breast cancer survival rates have improved, and the number of deaths associated with this disease is slowly decreasing, primarily due to factors such as early diagnosis, a new personalized treatment strategy and a greater understanding of the disease. Breast cancer is the most common invasive cancer among women and is the second leading cause of death from cancer in women following lung cancer (Figure 1).

Typically, the first signs of breast cancer occur as a thickened tissue region in the breast or a lump in the breast or an armpit.

The precise cause of breast cancer remains unknown but it is made more likely by certain risk factors. Many of such risk factors may be avoided. Like Age, Genetics, Dense breast tissue, Body weight etc. [1,2].

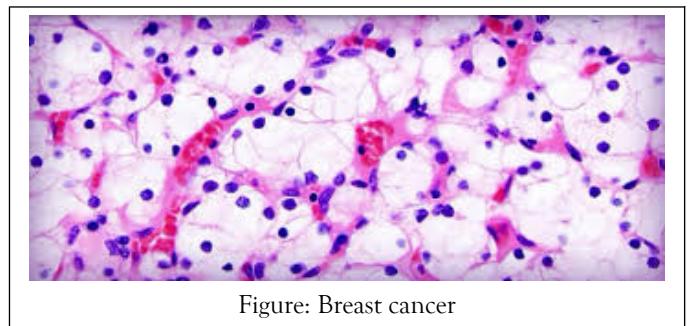


Figure: Breast cancer

### REFERENCES

1. Silverstein MJ, Poller DN, Waisman JR, Gierson ED, Colburn WJ, Waisman JR et al. Prognostic classification of breast ductal carcinoma-in-situ. *The Lancet* 1995;345:1154-1157.
2. Delay E et al. Fat injection to the breast: technique, results, and indications based on 880 procedures over 10 years. *Aesthet Surg J*. 2009;29:360-376.

**Correspondence to:** M Obulesu, Department of Materials Science, Graduate School of Pure and Applied Sciences, University of Tsukuba, Japan; E-mail: mobulesu@gmail.com

**Received:** July 20, 2020; **Accepted:** August 01, 2020; **Published:** August 15, 2020

**Citation:** Obulesu M (2020) Breast Cancer Can Occur in Both Men and Women but in Women it is Far More Severe. *J Med Surg Pathol*. 5:183.

**Copyright:** ©2020 Obulesu M. This is an open-access article distributed under the terms of the Creative Commons Attribution License, which permits unrestricted use, distribution, and reproduction in any medium, provided the original author and source are credited.