

Bacillus Cells Division and Arrangements on Glass Slide

Oves M^{1*} and Qari HA²

¹Center of Excellence in Environmental Studies, King Abdulaziz University, Saudi Arabia

²Department of Biological Science, Faculty of Science, King Abdulaziz University, Saudi Arabia

*Corresponding author: Mohammad Oves, Center of Excellence in Environmental Studies, King Abdulaziz University, Jeddah 21589, Kingdom of Saudi Arabia, Tel: 00393283366593; E-mail: owais.micro@gmail.com

Rec date: Jan 25, 2016; Acc date: Jan 27, 2016; Pub date: Jan 30, 2016

Copyright: © 2016 Oves, et al. This is an open-access article distributed under the terms of the Creative Commons Attribution License, which permits unrestricted use, distribution, and reproduction in any medium, provided the original author and source are credited.

Image Description

Bacillus cells arrangements on glass slide: *Bacillus sp.* isolated from waste water sample of Saudi Arabia, Jeddah. Bacillus bacterial culture

overnight grow and centrifuge and washed three times with ultra-pure Mili Q water further fix on glass slide. GenBank: LN827674.1

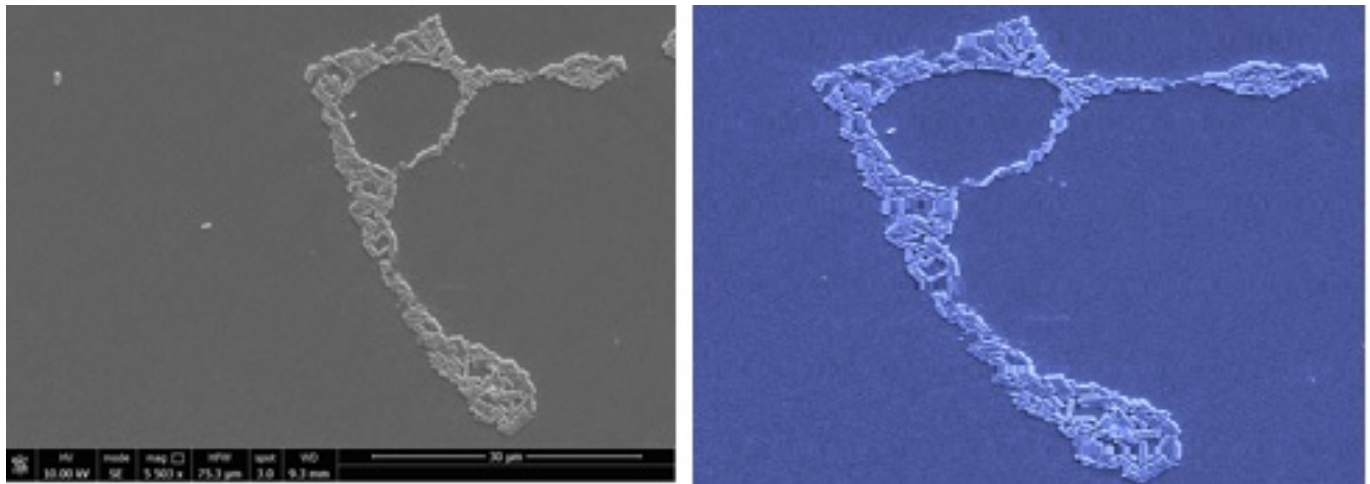


Figure 1: Bacillus cells arrangements on glass slide.