

A Comparative Study of Different Doses of Ephedrine on Intubating Conditions and Hemodynamics Using Propofol and Low Dose Rocuronium

Manju Sharma*, Anju Jamwal, Anjali Mehta and Ruchika Jyoti

Department of Anesthesiology and Critical Care, Government Medical College, Jammu, India

*Corresponding author: Dr Manju Sharma, Department of Anesthesiology and Critical Care, Government Medical College, Jammu, India, Tel: +917006241526; E-mail: drmanjusharma7@gmail.com

Received date: October 29, 2019; Accepted date: November 11, 2019; Published date: November 18, 2019

Copyright: © 2019 Sharma M. This is an open-access article distributed under the terms of the Creative Commons Attribution License, which permits unrestricted use, distribution, and reproduction in any medium, provided the original author and source are credited.

Abstract

Background: Succinylcholine as muscle relaxant is a norm in emergency department even though it is associated with a multitude of adverse effects. We used low dose rocuronium with ephedrine so as to shorten the onset of rocuronium in accordance with RSI without prolonging the duration as seen with the usual dose used for RSI. Increase in cardiac output caused by Ephedrine can reduce the onset time of Rocuronium. Hypotension associated with bolus dose of Propofol can also be prevented by Ephedrine. Appropriate dose of Ephedrine is advised to achieve the aforementioned benefits without undue side effects such as hypertension and tachycardia. Because of variation in doses and side effects of Ephedrine in various studies, we compared the influence of Ephedrine 30, 70 and 110 mcg/kg on intubating conditions and hemodynamics using Propofol and low dose Rocuronium

Methods: 90 patients of either sex, ranging from 18-50 years belonging to ASA grade 1 and 2 undergoing elective surgeries under general anesthesia were taken up for study. Patients were randomly allocated to one of the three groups of 30 patients each.

Group 1: Rocuronium 0.6 mg/kg and Ephedrine 30 mcg/kg

Group 2: Rocuronium 0.6 mg/kg and Ephedrine 70 mcg/kg

Group 3: Rocuronium 0.6 mg/kg and Ephedrine 110 mcg/kg

Results: It was found that intubating conditions were most favorable in group 2 followed by group 3 and least favorable in group 1. Group 3 was associated with adverse hemodynamic effects such as tachycardia and increased blood pressure. Such effects being least in group 1 and intermediate in group 2.

Conclusion: Ephedrine pre-treatment in the dose of 70 mcg/kg with similar doses of Rocuronium and Propofol provides ideal intubating conditions with acceptable hemodynamic changes. So, the combination of Propofol 2.5 mg/kg, Rocuronium 0.6 mg/kg and ephedrine 70 mcg/kg may be of value when use of Succinylcholine is contraindicated for RSI.

Keywords: Hemoglobin; Intravenous; Propofol; Rocuronium; Succinylcholine

Introduction

Rapid sequence intubation is almost a norm in emergency departments where full stomach patients are commonly encountered. Succinylcholine is the most common neuromuscular blocking agent used owing to its short onset as well as duration. Though succinylcholine is the most favored neuromuscular blocking agent for rapid sequence intubation, its use is not without several adverse reactions ranging from myalgia to hyperkalemia, masseter spasm and even death. To avoid these adverse reactions, non-depolarizing muscle relaxants have come in favor.

Rocuronium in appropriate doses has a speed of onset only marginally slower than that of Succinylcholine. It has an intermediate duration of action and depends on the kidney and liver for elimination. Rocuronium by the virtue of its low potency and thereby a

rapid onset of action may be used in place of Succinylcholine. However, the onset of Rocuronium is dose dependent and duration of action is longer as compared to Succinylcholine which limits its use in Rapid Sequence Induction.

Most of the general anesthetic procedures require laryngoscopy and endotracheal intubation. Risk of hypoxia and pulmonary aspiration is highest in the period ranging from loss of consciousness to tracheal intubation. Therefore, it becomes important to use a neuromuscular blocking agent with short onset so as to prevent life threatening hypoxia or aspiration.

The onset time of Rocuronium depends on the rate at which a pharmacologically effective concentration is achieved in the Bio phase that is the neuromuscular cleft. In turn, this rate is influenced by certain factors, such as the potency of the drug, the dose administered and the cardiovascular status namely cardiac output and muscle blood flow. Moreover, the onset time of drugs with rapid onset such as Rocuronium, chiefly depends on the circulation time to the muscle [1].

It has been reported that Rocuronium is only comparable to Succinylcholine during Rapid Sequence Induction and Intubation in a dose of 0.9-1.2 mg/kg body weight, but a dose of 0.9-1.2 mg/kg lead to increased duration of action up to 50-60 minutes [2]. Rocuronium in a dose of 0.6 mg/kg produced moving vocal cords on direct laryngoscopy and diaphragmatic response to intubation in 20%-25% of patients [3].

Ephedrine is an indirect acting sympathomimetic agent that stimulates both alpha and beta receptors, and hence increases systolic blood pressure, diastolic blood pressure, heart rate, cardiac output and venous return. Intravenous Ephedrine is used for hypotension associated with regional anesthesia in a dosage of 2.5-10 mg I/v stat. Ephedrine by increasing the cardiac output and tissue perfusion could reduce the onset time of Rocuronium and improve the intubating conditions [4]. It can also prevent hypotension associated with bolus doses of Propofol during induction of general anesthesia [5]. The peak effect of Ephedrine on cardiac output is reached at about 2-3 minutes after the injection [6].

It is advisable to use an appropriate dose of Ephedrine to achieve both these benefits without undue side effects such as hypertension or tachycardia. Because of variation in doses and side effects of Ephedrine in various studies, we compared the influence of Ephedrine 30, 70 and 110 mcg/kg on intubating conditions and hemodynamics using Propofol and low dose Rocuronium.

Aims and Objectives

To compare the effect of various doses of Ephedrine on intubating conditions with low dose Rocuronium.

To compare the effect of these doses of Ephedrine on hemodynamic parameters with low dose Rocuronium.

Patients and Methods

The present randomized open labeled prospective study was conducted in the Post Graduate department of Anesthesiology and critical care GMC, Jammu.

This study was approved by the University's Institutional Ethics Committee (IEC/Thesis/Research/T5B/2016/294) dated 07-10-2016 and written informed consent was obtained from all subjects participating in the trial.

90 patients of either sex, ranging in age from 18-50 years belonging to ASA grade 1 and 2 undergoing elective surgeries under general anesthesia were taken up for study. Patients were randomly allocated to one of the three groups of 30 patients each.

Group 1: Patient received Rocuronium 0.6 mg/kg and Ephedrine 30 mcg/kg

Group 2: Patient received Rocuronium 0.6 mg/kg and Ephedrine 70 mcg/kg

Group 3: Patient received Rocuronium 0.6 mg/kg and Ephedrine 110 mcg/kg

Exclusion criteria

- Patient refusal to participate in the study.
- Hypersensitivity to study drugs.
- Haemodynamically unstable patient.
- Any cardiovascular or neuromuscular disease.
- Intake of drugs known to interact with neuromuscular junction or Ephedrine such as Aminoglycosides, Tetracyclins, Bacitracin, Polymyxin B, Colistin, Sodium Colistimethate, MAO inhibitors and Tri Cyclic antidepressants.
- Anticipated difficult airway (MPG grade 3 or 4).
- Cormack Lehane grade 3 or 4 on direct laryngoscopy.
- Patients on chronic preoperative Beta-Adrenergic Blocker treatment.
- Pregnancy
- Obesity (BMI>30 Kg/m)
- History of long term Diuretic or vasoactive medication.
- 30% or more increase in BP or HR above baseline during procedure were excluded from the study.

Pre-anesthetic evaluation

1. Each patient underwent a detailed pre-anesthetic check up one day prior to surgery. Informed written consent was taken from all the patients to be enrolled in the study.

2. Detailed history, thorough clinical examination (physical and systemic) was done.

3. Routine investigations like Hb, BT, CT, TLC, DLC, RFT, serum electrolytes, LFT, blood sugar(F), urine R/E, ECG and chest X-ray (PA view) was noted.

4. Any other investigation as deemed necessary for the patient was carried out.

5. All patients were prepared by overnight fasting. Patients received tab Alprazolam 0.25 mg and tab Ranitidine 150 mg orally at bed time the night before surgery.

6. After arrival in pre-operative room, I/V line with 20 G cannula was established and all patients received 2 ml/kg/hr. of ringer lactate and Inj Diclofenac Sodium was given in the dose of 1.5 mg/kg body weight intra muscularly.

Anesthetic procedure

In the operating room, standard monitors such as ECG, SPO₂, ETCO₂ and automated blood pressure was attached, and baseline measurements were recorded. Patients were pre-oxygenated for 3 minutes. Fentanyl 2 mcg/kg body weight was given one minute after start of pre-oxygenation. Then one minute afterwards, Ephedrine was administered in the dosage of 30, 70 or 110 mcg/kg body weight in the

groups 1, 2 and 3 respectively diluted in 5 ml of saline. Three minutes after pre-oxygenation with 100% Oxygen, anesthesia was induced with Propofol 2.5 mg/kg over 20 seconds. After loss of verbal contact with the patient and confirmation that ventilation via the facemask is possible, all the patients received 0.6 mg/kg of inj. Rocuronium over 5 seconds. Patients were not ventilated unless SPO₂ fell below 90%. Laryngoscopy was done with an appropriately sized Macintosh blade 60 seconds after administration of Rocuronium. And tracheal intubation was attempted after that. Oral endotracheal tubes 7.0 and 8.0 internal diameter was used for females and males respectively. The cuff was inflated with air until the disappearance of a leak on positive pressure ventilation.

Intubation time was recorded as the number of seconds from end of administration of neuromuscular blocking agent to insertion of tube into trachea, as measured by a stopwatch.

Intubating conditions were assessed using the criteria of Cooper and colleagues [7]. Criteria for jaw relaxation, vocal cord position and intubating response were used to assess intubation condition. Jaw relaxation: 0=poor, 1=minimal, 2=moderate and 3=good; vocal cords position: 0=closed, 1=closing, 2=moving and 3=open; response to intubation: 0=severe coughing or bucking, 1=mild coughing, 2=light diaphragmatic movement and 3=none. A total score of 8-9 was considered excellent; 6-7 was considered good, 3-5 as fair and 0-2 as poor.

Patient's mean arterial pressure, heart rate, and oxygen saturation was recorded before induction (baseline), just before intubation, and 1, 3, and 5 minutes after the intubation and then every 10 minutes throughout surgery.

30% or more increase in BP or HR above baseline was excluded from the study. 20%-30% increase in HR or BP above baseline was managed by esmolol 0.3 mg/kg.

Anesthesia was maintained with oxygen 40%, Nitrous Oxide 60% and Halothane with intermittent positive pressure ventilation maintaining normocapnia. Top-up of Rocuronium in the dosage of 0.15 mg/kg was given if required.

All patients were reversed with inj Glycopyrrolate 10 mcg/kg and inj Neostigmine 50 mcg/kg after completion of surgical procedure. Inj ondansetron in the dose of 0.1 mg per kg was given prior to reversal.

Statistical analysis

The recorded data was compiled and entered in a spreadsheet (Microsoft Excel) and then exported to data editor of SPSS Version 20.0 (SPSS Inc., Chicago, Illinois, USA). Continuous variables were summarized in the form of means and standard deviations and categorical variables were expressed as frequencies and percentages. Graphically the data was presented by bar and line diagrams. Analysis of variance (ANOVA) with least significant difference (LSD) test was employed for comparing continuous variables. Chi-square test or Fisher's exact test, whichever appropriate, was applied for comparing categorical variables. A p-value of less than 0.05 was considered statistically significant.

Results

The demographic parameters of the patients including age, weight, sex, ASA status and intubating time was statistically insignificant between the groups (p-value>0.05) (Tables 1 and 2). Among the 90

patients enrolled in the study 4 patients were excluded from the study. Endotracheal intubation caused significant increase in systolic and diastolic blood pressure (systolic/diastolic blood pressure: >200/100) at 1 minute in 4 patients of group 3 (110 mcg/kg) with no patients in other study group. This exaggerated response may be because lighter planes of anesthesia, prolonged laryngoscopy or higher dose of Ephedrine (110 mcg/kg).

Groups	N	Mean age	SD	Range	p-value
Group 1	30	34.3	7.89	21-49	0.727
Group 2	30	35.8	7.93	19-50	
Group 3	30	34.4	7.97	20-48	

Table 1: Showing mean age of study patients among various groups.

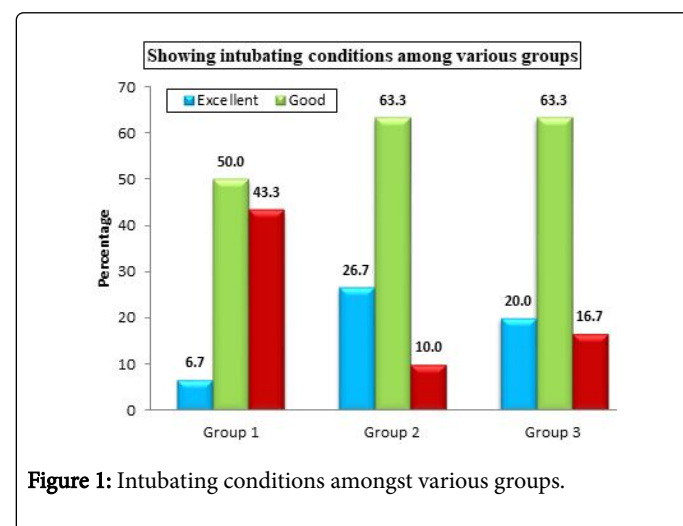


Figure 1: Intubating conditions amongst various groups.

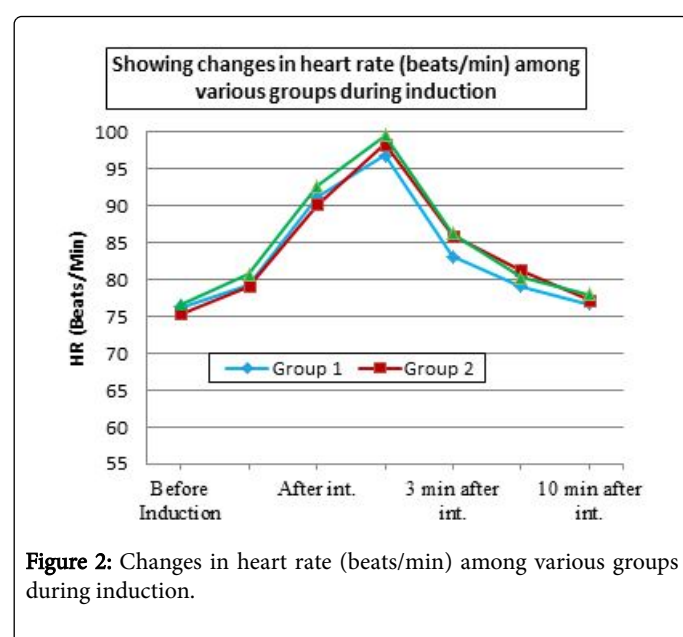
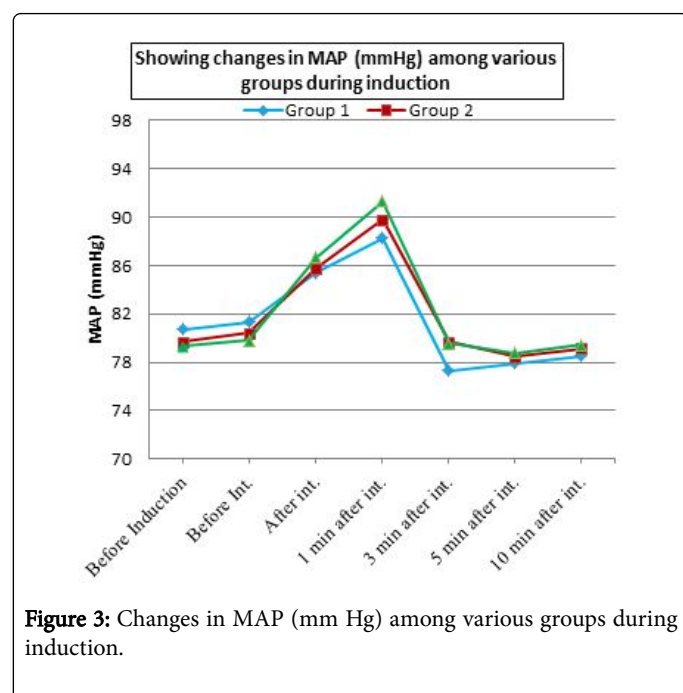


Figure 2: Changes in heart rate (beats/min) among various groups during induction.



Groups	N	Mean time	Intubating	SD	Range	p-value
Group 1	30	120.1		19.73	90-150	0.667
Group 2	30	119.4		16.97	93-146	
Group 3	30	123.4		17.66	95-150	

Table 2: Comparison based on intubating time among various groups.

It was found that intubating conditions were most favorable in group 2 (Ephedrine 70 mcg/kg) followed by group 3 (Ephedrine 110 mcg/kg) and least favorable in group 1 (Ephedrine 30 mcg/kg) (Table 3, Figure 1)). Group 3 was associated with adverse hemodynamic effects such as tachycardia and increased blood pressure. Such effects being least in group 1 (Ephedrine 30 mcg/kg) and intermediate in group 2 (Ephedrine 70 mcg/kg). However, group 2 (Ephedrine 30 mcg/kg) had best patient profile in terms of favorable intubating conditions and hemodynamic conditions (Figures 2 and 3).

Intubating Conditions	Group 1 [n=30]		Group 2 [n=30]		Group 3 [n=30]	
	No.	%age	No.	%age	No.	%age
Excellent	2	6.7	8	26.7	6	20
Good	15	50	19	63.3	19	63.3
Fair	13	43.3	3	10	5	16.7
p-value	Group 1 vs. Group 2		Group 2 vs. Group 3		Group 1 vs. Group 3	
	0.006*	0.675	0.039*			
*Statistically significant difference from baseline (p-value<0.05)						

Table 3: Comparison based on intubating conditions among various groups.

Discussion

In patients where Succinylcholine could be avoided because of conditions like recent burns, open globe injury, increased intracranial pressure etc., Rocuronium was successfully used in higher doses of 0.9-1.2 mg/kg to decrease the onset time of neuromuscular blockade. When a large dose of Rocuronium is used, its duration of action is prolonged, making it unsuitable for short procedures and difficult ventilation situations. Several anesthesiologists used Rocuronium in the lower dose of 0.6 mg/kg for rapid tracheal intubation which lead to suboptimal intubating conditions in 20-25% of patients [8].

Ephedrine as an adjuvant with Rocuronium and Propofol has various effects. A larger dose of Rocuronium 0.9 ± 1.2 mg/kg can be avoided by administering ephedrine. Another advantage being that it's theoretically safer for haemodynamically unstable patients. Induction with Propofol, Ephedrine and low dose Rocuronium produces good intubating conditions in a timescale appropriate for rapid sequence induction. The use of the Propofol-Ephedrine combination will also avoid the unwanted side-effects of Ketamine and Etomidate, which although shortens the onset of Rocuronium but produces hallucinations and adrenal suppression [9].

The better intubating conditions in Group 2 and Group 3 are most likely due to the effects of Ephedrine resulting in an increased cardiac output and tissue perfusion and therefore a faster delivery of Rocuronium to the laryngeal and diaphragmatic muscles. The factors affecting the onset of neuromuscular blockers have been extensively reviewed by Donati, 1981 [1] and includes access of the neuromuscular blocker to the muscle and its interaction with muscle nicotinic receptors. The speed of a drug's access to these receptors appears to be proportional to cardiac output, circulation time and muscle perfusion.

Development of neuromuscular blockade was not monitored as there is a poor correlation between onset time of neuromuscular blockade measured at the adductor pollicis muscle and the quality of intubating conditions [10]. Agoston in 1951 [11] has declared that neuromuscular transmission monitoring is probably obsolete in this context. Furthermore, we considered it more important to adhere to a rapid sequence protocol rather than delay tracheal intubation during the calibration period of a neuromuscular transmission monitor.

In present study, the difference in heart rate from the baseline was greatest in group 3 followed by group 2 and group 1 in that order. This can be explained by the fact that in group 1 we used lowest dose of Ephedrine and hence patients' laryngeal and diaphragmatic musculature could not be completely paralyzed during laryngoscopy and intubation. As lower dose of Ephedrine has minimal effect on cardiac output, therefore decreased amount of the muscle relaxant will be present in the bio phase leading to poor relaxation of laryngeal musculature during intubation and hence the aforementioned effects.

No statistically significant difference in Systolic blood pressure, diastolic blood pressure and mean arterial pressure was found amongst the groups on intergroup comparison (p value>0.05). On intragroup comparison, statistically significant increase in systolic blood pressure, diastolic blood pressure and mean arterial pressure from baseline was seen after intubation and 1 minute after intubation in all the three groups. The difference in blood pressure from the baseline was greatest in group 3 followed by group 2 and group 1 in that order.

The increase in heart rate and blood pressure after Ephedrine is expected as it is a sympathomimetic drug which stimulates both alpha and beta receptors, and also releases Noradrenaline from the storage

sites. This sympathomimetic action is responsible for the hemodynamic changes. However, the heart rate returned to baseline at 5 minutes after intubation and the systolic blood pressure, diastolic blood pressure and mean arterial pressure returned to baseline at 3 minutes after intubation.

Finally, to sum up, ephedrine 70 mcg/kg given 60 seconds before Rocuronium improved intubating conditions and facilitated the onset of Rocuronium without adverse hemodynamic effects. It was found that intubating conditions were most favorable in group 2 (Ephedrine 70 mcg/kg) followed by group 3 (Ephedrine 110 mcg/kg) and least favorable in group 1 (Ephedrine 30 mcg/kg). Group 3 was associated with adverse hemodynamic effects such as tachycardia and increased blood pressure. Such effects being least in group 1 (Ephedrine 30 mcg/kg) and intermediate in group 2 (Ephedrine 70 mcg/kg). However, group 2 (Ephedrine 30 mcg/kg) had best patient profile in terms of favorable intubating conditions and hemodynamic conditions.

Conclusion

We conclude that pre-treatment with ephedrine 30 mcg/kg one minute before administration of low dose Rocuronium (0.6 mg/kg) on induction with Propofol (2.5 mg/kg) provides poor intubating conditions with stable hemodynamics, while pre-treatment with ephedrine 110 mcg/kg with the same doses of Rocuronium and Propofol provides acceptable intubating conditions but with exaggerated and unacceptable hemodynamic response. Ephedrine pre-treatment in the dose of 70 mcg/kg with similar doses of Rocuronium and Propofol provides ideal intubating conditions with acceptable hemodynamic changes. So, the combination of Propofol 2.5 mg/kg, Rocuronium 0.6 mg/kg and ephedrine 70 mcg/kg may be of value when use of Succinylcholine is contraindicated for Rapid Sequence Induction.

Acknowledgements

The authors would like to thank Dr Harry Gwirtsman, Staff Psychiatrist, Tennessee Valley Healthcare System, VA Hospitals and

Associate Professor of Psychiatry at Vanderbilt School of Medicine for his valuable input after reviewing the manuscript and for the insightful suggestions he contributed.

References

1. Donati F (1988) Onset of action of relaxants. *Can J Anaesth* 35: 52–58.
2. McCourt KC, Salmela L, Mirakhur RK, Carroll M, Mäkinen MT, et al. (1998) Comparison of Rocuronium and Suxamethonium for use during rapid sequence induction of anesthesia. *Anaesthesia* 53: 867–871.
3. Sparr HJ, Giesinger S, Ulmer H, Hollenstein-Zacke M, Luger TJ (1996) Influence of induction technique on intubating conditions after rocuronium in adults: comparison with rapid sequence induction using thiopentone and suxamethonium. *Br J Anaesth* 77: 339–342.
4. Tan CH, Onisong MK, Chiu WK (2002) The influence of induction technique on intubating conditions 1 min after rocuronium administration: a comparison of a propofol-ephedrine combination and propofol. *Anaesthesia* 57: 223–226.
5. Michelsen I, Helbo-Hansen HS, Kohler F, Lorenzen AG, Rydlund E, et al. (1998) Prophylactic ephedrine attenuates the hemodynamic response to propofol in elderly female patients. *Anesth Analg* 86: 477–481.
6. Rådström M, Bengtsson J, Ederberg S, Bengtsson A, Loswick AC, et al. (1995) Effects of ephedrine on oxygen consumption and cardiac output. *Acta Anaesthesiol Scand* 39: 1084–1087.
7. Cooper R, Mirakhur RK, Clarke RSJ, Boules Z (1992) Comparison of intubating conditions after administration of Org 9426 (rocuronium) and Suxamethonium. *Br J Anaesth* 69: 269–273.
8. Magorain T, Flannery KB, Miller RD (1993) Comparison of rocuronium, succinylcholine, and vecuronium for rapid sequence induction of anesthesia in adult patients. *Anesthesiology* 79: 913–918.
9. Muñoz HR, González AG, Dagnino JA, González JA, Pérez AE (1997) The effect of ephedrine on the onset time of Rocuronium. *Anesth Analg* 85: 437–440.
10. Huizinga ACT, Vandenbrom RHG, Wierda JMKH, Hommes FDM, Hennis PJ (1992) Intubating conditions and onset of neuromuscular block of rocuronium (Org 9426); a comparison with suxamethonium. *Acta Anaesthesiol Scand* 36: 463–468.
11. Agoston S (1995) Onset time and evaluation of intubating conditions: rocuronium in perspective. *Eur J Anaesthesiol* 12: 31–37.