

15th International Conference on **Surgical Pathology and Cancer Diagnosis**

&

4th International Conference on **General Practice & Primary Care**

April 15-16, 2019 Berlin, Germany

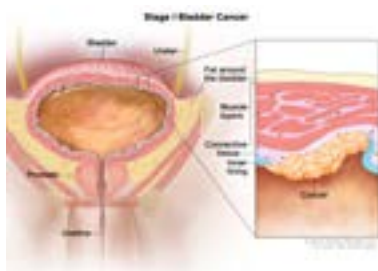


Hebat Allah Ahmed Amin

Helwan Medical University, Egypt

Schistosomiasis and bladder cancer in Egypt: Revaluation

Schistosomiasis is an ancient disease, depicted in papyri from Pharaonic Egypt. WHO (2015) reported schistosomiasis as an endemic in 78 countries. It was first linked to urinary bladder cancer by Furgesson in Egypt in 1911. In 2012, IARC (International Agency for Research on Cancer) reported the association between schistosomiasis and cancer of the urinary bladder. Results of the National Population-Based Cancer Registry Program in Egypt declared urinary bladder cancer as the second common cancer among males (10.7%). In their report in 1997, Ghoneim, et al. declared that squamous cell carcinoma (SCC) constituted 59% of 1026 cystectomy specimens at the Mansoura Urology and Nephrology Centre. Botelho, et al., as well, in 2018 epidemiologically confirmed the well-known association between SCC of the bladder with Schistosomiasis haematobia. However, the concept that schistosomiasis is more associated with SCC needs revaluation. Moreover, the interaction between schistosomiasis and smoking needs more study. We think that the efficient control of schistosomiasis in Egypt and the subsequent decrease in the intensity of infestation, together with increased smoking have led to changing of features of bladder cancers. The application of evidence-based recommendations in the management of bladder cancer may decrease the burden of this cancer in Egypt. The availability of a large number of patients will allow review of old concepts and better evaluation of the present condition.



Biography

Hebat Allah Ahmed Amin is a Lecturer of Histopathology at Helwan Medical School and Pathology Consultant at Wadi El-Neel Hospital and 6th October Insurance Hospital with professional experience over 15 years. She is a former Pathology Consultant at the Central Medical Laboratory of the Egyptian Forensic Medicine Authority (EFMA), Cairo, Egypt. She has over 12 publications in renowned journals. She has professional experience in medical education. She is a Member in the Medical Education Unit and a Member of the Core Committee of PBL. As a Forensic Pathologist, she has over 13 years of professional experience.

hebatallahahmedamin@gmail.com