

15th International Conference on **Surgical Pathology and Cancer Diagnosis**
&
4th International Conference on **General Practice & Primary Care**

April 15-16, 2019 Berlin, Germany

Histological variants and sites of presentation of malignant melanoma in a resource poor setting: A histopathological review

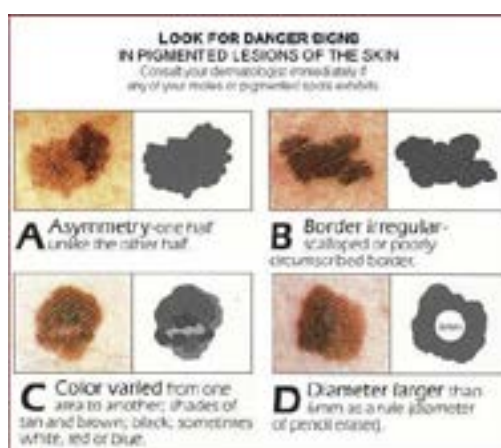
Adoke Kasimu Umar, Saad Aliyu Ahmed and Yawale Iliyasu
Ahmadu Bello University Teaching Hospital, Nigeria

Background: Melanoma is a malignant tumor that arises from melanocytic cells. The incidence is increasing worldwide in white population where fair skin people receive excessive sun exposure. Although relatively uncommon in Africa-Americans, recent trends shows increase incidence in Africa-Americans. Data on the incidence and biology of melanoma are few in Africa. This study review the variants and sites of melanoma in a resource poor setting in Nigeria with some immunohistochemical stains performed.

Method: All cases of melanoma diagnosed in the Department of Pathology in a tertiary hospital in Nigeria over a three year period from 2015-2017 were retrieved. Patient's information including site and age were also retrieved from their case notes. Immunohistochemistry using two antibodies S-100, HMB-45 was done.

Results: A total 38 cases were seen during the study period with a male female ratio of 1:1.1. The age range was 5-80 years with a mean age of 48.8 ± 18.1 . The most common site for melanoma is the foot 19(50%), followed by the uvea 7(18.4%), skin and inguinal lymph node 4(10.5%), anorectal and conjunctiva had 2(5.3%). The commonest histological variant of melanoma was acral lentiginous melanoma 19(50%), Superficial spreading melanoma 4(10.5%), nodular melanoma 3(7.9%) and desmoplastic melanoma 1(2.6%). Immunohistochemistry was used on three cases to rule out differentials.

Conclusion: Malignant melanoma in our setting is in contrast with African-Americans and Caucasians population based on its site and histological type, hence future studies on molecular pathways of melanoma in Africa needs to be explored to show similarity or difference and the possibility of targeted immunotherapy.



JOINT EVENT

15th International Conference on **Surgical Pathology and Cancer Diagnosis**

&

4th International Conference on **General Practice & Primary Care**

April 15-16, 2019 Berlin, Germany

Recent Publications

1. Ferlay J, Shin H, Bray F, et al. GLOBOCAN 2008: cancer incidence and mortality worldwide. Lyon, France: International Agency for Research on Cancer, 2010.
2. Garbe C and Leiter U (2009) Melanoma epidemiology and trends. Clin Dermatol 27(1):3-9.
3. Hall H I, Miller D R, Rogers J D, et al. (1999) Update on the incidence and mortality from melanoma in the United States. J Am Acad Dermatol 40(1):35-42

Biography

Adoke Kasimu Umar is a Young Consultant Pathologist from a resource poor setting in Nigeria with special interest in molecular Pathology and translational medicine. He has published more than 20 papers in reputable local and international journals.

kasimuadoke@gmail.com

Notes: