

4th International Conference on Physical Medicine & Rehabilitation

November 07-08, 2022 | Webinar

Received date: 08.09.2022 | Accepted date: 09.09.2022 | Published date: 22.11.2022

Evolution of territorial rehabilitation in Als through application of dtcp

Rossella Raggi

Primary Care Department, Local Health Unit - Piacenza, Italy

In Italy, there is a fragmentation of regional organizational models relating to health and social care in the different stages of the care pathway for people with Amyotrophic Lateral Sclerosis (ALS). However, in consideration of the complex problems brought about by the pathology, it is important to implement structured interventions and resources that are not limited only to the medical-health field but are guaranteed, in terms of appropriateness and equity, also through activation of territorial and social services at different levels. To cope with this type of problem, the local health authority of Piacenza has structured a Diagnostic-Therapeutic Assistance Path (PDTA) - It consists of an intervention aimed at sharing decision-making processes and the organization of assistance for the specific group of patients suffering from ALS. The elaboration of the PDTA allows having a clear definition of the objectives and key elements of the intervention facilitates communication and collaboration between team members and with the patient-family, synergistically coordinates adequate resources for multidisciplinary assistance activities. The DTCP for ALS patients of the Health Care Service of Piacenza has been based on a functional staging model defined by the parallel progression of vital function impairment and healthcare needs. Within a structured path, the team, through periodic assessments, plays a central role in assessing the patient's rehabilitation-assistance needs, preparing a personalized care plan that can be articulated not only in "hospital" health interventions, but also in home or residential interventions.

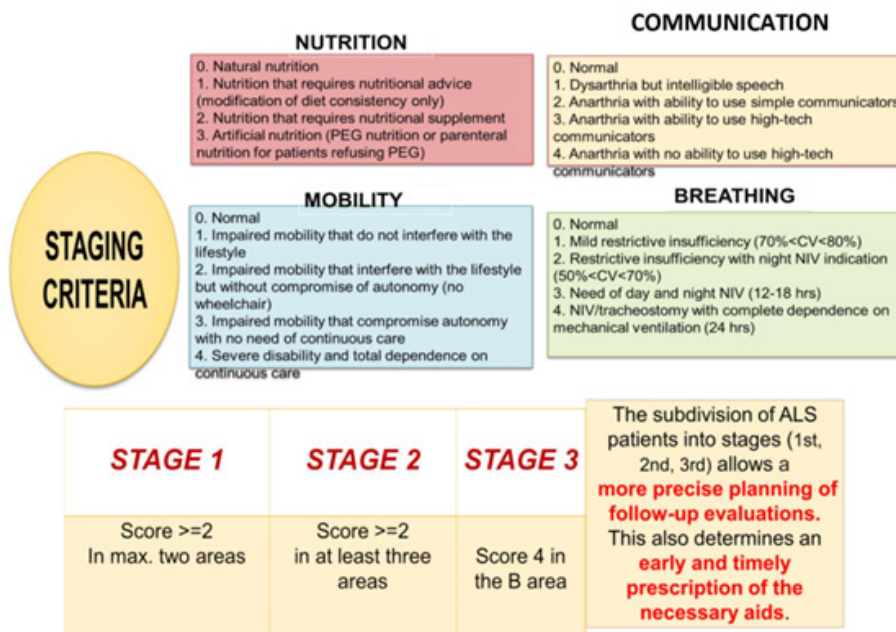


Figure 1: Criteria for staging patients with amyotrophic lateral sclerosis

4th International Conference on **Physical Medicine & Rehabilitation**

November 07-08, 2022 | Webinar

Recent Publications

1. Zoccolella, S., Beghi, E., Palagano, G. et al. ALS multidisciplinary clinic and survival. J Neurol 254, 1107 (2007).
2. Hogden, A., Foley, G., Henderson, R. D., James, N., & Aoun, S. M. (2017). Amyotrophic lateral sclerosis: improving care with a multidisciplinary approach. Journal of multidisciplinary healthcare, 10, 205–215.
3. Sarah Martin, Emma Trevor-Jones, Sabyha Khan, Keelan Shaw, Deepti Marchment, Anna Kulka, Catherine E Ellis, Rachel Burman, Martin R. Turner, Liam Carroll, Leah Mursaleen, P. Nigel Leigh, Christopher E. Shaw, Neil Pearce, Daniel Stahl & Ammar Al-Chalabi (2017) The benefit of evolving multidisciplinary care in ALS: a diagnostic cohort survival comparison, Amyotrophic Lateral Sclerosis and Frontotemporal Degeneration, 18:7-8, 569-575.

Biography

Rossella Raggi, speech therapist, has been working for more than twenty years in the Piacenza Health Unit in the field of the assessment and treatment of language and cognitive function problems in patients with neurological, degenerative or acquired pathologies. What is highlighted in this article is the result of the work of a multidisciplinary team within the PDTA of the Local Health Company of Piacenza.

rossellaraggi@fastwebnet.it