

4th World Congress on

Medical Imaging and Clinical Research

September 03-04, 2018 | London, UK

Primary breast lymphoma a fast growing tumor with delay response to treatment: A case report

Farideh Gharekhanloo and Arash Dehghan
Hamadan University of Medical Sciences, Iran

Primary breast lymphoma is a rare disease representing 0.04-0.5% of all malignant female breast tumor. Patient usually present to palpable mass in the breast without any evidence of lymphoma in the other organs. Imaging finding is nonspecific. Histopathologic exam is only confirmed with histopathologic examination. We report a 57 year old women presented with a palpable mass in the left breast from 2 months ago with very fast growth rate. Screening mammography 6 months ago showed normal while ultrasonography and elastography revealed a 45 mm hard mass. The mass was lobulated with partially obscured border in mammogram without microcalcification. Histopathologic and immunohistochemical findings confirmed the diagnosis. Chemotherapy was initiated with RCHOP regiment however after two cycle of chemotherapy there isn't any obvious response to treatment. Repeat biopsy revealed some edematous changes within tumoral mass which resulted in false growth of tumor, however after 8 cycle of chemotherapy the mass regressed. Some cases of rare breast lymphoma represent as fast growing tumor early and accurate diagnosis and complete course of treatment is crucial for appropriate treatment strategies and avoid unnecessary mastectomy in management of primary breast lymphoma.

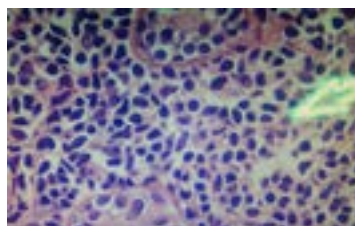
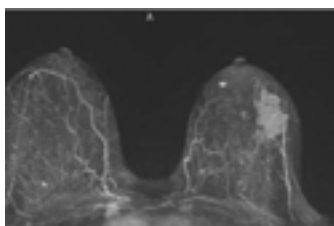


Figure 1: Contrast enhanced breast MRI with 3 dimensional reconstructions revealed lobulated enhancing mass in the left breast.

Figure 2: Histopathologic investigation compatible with diffuse large B cell lymphoma.

Recent Publications:

1. Cheah C Y, Campbell B A and Seymour J F (2014) Primary breast lymphoma. *Cancer Treat Rev. Elsevier.* 40(8):900-908.
2. Jabbour G et al. (2016) Primary breast lymphoma in a woman: A case report and review of the literature. *Am. J. Case Rep. International Scientific Literature.* 17:97-103.
3. Hosein P J et al. (2014) A multicentre study of primary breast diffuse large B-cell lymphoma in the rituximab era. *Br. J. Haematol. Wiley Online Library.* 165(3):358-363.
4. Nisar U et al. (2017) Primary breast lymphoma with unconventional presentation: a case report. *J Leuk.* 5(3):1-4.
5. Heinzen R N et al. (2017) Primary breast lymphoma presenting as locally advanced breast cancer: a case report. *Mastology.* 27(2):152-155.

Biography

Farideh Gharekhanloo is a Radiologist and Assistant Professor of Radiology at Hamadan University of Medical Sciences with work experience of more than 15 years on the breast disease. She has a Certification of Breast MRI from University Medical Center Friburg in Germany. This studies was according to analysis of our document in the Mehr Medical Imaging Center and Clinical Research Development Unit of Besat Hospital.

dr_gharekhanloof@yahoo.com